

## Krewmate TEM | TSEM Mini Entertainment Chain Hoist

### Features and Benefits

The Kito Krewmate mini three phase entertainment chain hoists were designed with a state-of-the-art control system using solid state relay (SSR) technology and a microcontroller unit (MCU) to increase the longevity of the hoist and provide superior safety functions. These high quality, low-headroom, fully-featured motors provide reliable performance in theaters, concert halls, arenas and studios.



**1** Compact and rugged die-cast aluminum body with no sharp edges. Superior ingress protection makes it suitable for both indoor and outdoor applications. IP65 rated. Conveniently fits inside 12 inch truss.

**2** 360 degree swivelling top and bottom hooks with heavy-duty hook latches. Optional fixed hook available.

**3** Nickel-plated, DIN chain for superb durability, strength and corrosion resistance. EN 818-17 standard.



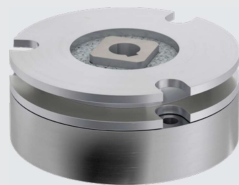
**Standards**

Hoist exceeds stringent world standards; complies with German regulation BGV-D8, US ASME/ESTA standards and is UL listed to UL1340/CSA 22.2. Certified to machinery and directive marked CE.



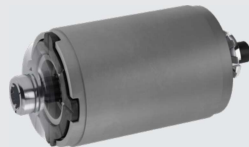
**High Performance Motor Brake**

Fast acting and durable current driven electromagnetic brake. 5 year warranty.



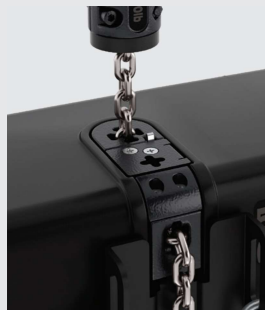
**Friction Clutch**

Rotor integrated friction clutch outside of the load path provides consistent performance over a wide temperature range.



**Low Profile Upper/Lower Limit Switches**

Protects the hoist from overwinding and offers exceptional headroom.



**Unique Chain Guide**

Discharges chain from the side of the hoist body preventing tangling when winding up slack chain.



**Solid State Relay Board**

No mechanical contacts for extended lifetime and microcontroller provides protection from fast reverse, phase loss & reversal (3ph), overcurrent, overtemperature, and overvoltage. Includes electronic overload limiter and an LED error indicator.



**Grease-Packed Gearbox**

For demanding entertainment applications.



**Chain Container**

Optional reversible black canvas chain container to meet BGV-D8 regulations. Designed with two secure attachment points.



**Pendant (Pickle)**

Optional two button pendant for up and down functions and can be customized with pendant cord at any length. IP65 rated.



# Krewmate TEM | TSEM Mini Entertainment Chain Hoist

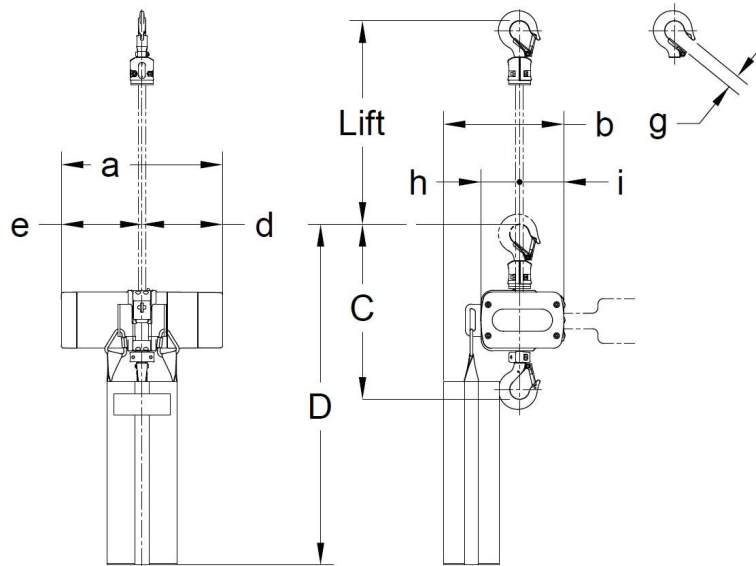
## Technical Specifications & Dimensions

### TEM THREE PHASE SINGLE SPEED— IMPERIAL SPECIFICATIONS

Capacity (lb)	Product Code	Standard Lift (ft)	Lifting Motor 3 Phase 60 Hz				Lifting Motor 3 Phase 50 Hz				Load Chain Diameter (mm) x Chain Fall Lines	Net Weight (lb)	Weight for Additional 1 ft. Lift (lb)
			Lifting Speed (ft/min)	Output (Hp)	Rated Current (amps)		Lifting Speed (ft/min)	Output (Hp)	Rated Current (amps)				
					@200–230V	@380–460V			@200–230V	@380–400V			
500	TEM003L	60	16	0,34	1,4	0,7	13	0,34	1,4	0,6	4,0 x 1	41,9	0,24
1000	TEM005C		8	0,34	1,4	0,7	6,5	0,34	1,4	0,6	4,0 x 2	58,4	0,48

### TSEM SINGLE PHASE SINGLE SPEED—IMPERIAL SPECIFICATIONS

Capacity (lb)	Product Code	Standard Lift (ft)	Lifting Motor 3 Phase 60 Hz				Load Chain Diameter (mm) x Chain Fall Lines	Net Weight (lb)	Weight for Additional 1 ft. Lift (lb)
			Lifting Speed (ft/min)	Output (Hp)	Rated Current (amps)				
					@115–120V	@220–230V			
500	TSEM003L	60	12	0,22	4,6	2,3	4,0 x 1	41,9	0,24
1000	TSEM005C		6	0,22	4,6	2,3	4,0 x 2	58,4	0,48



TEM003L/TSEM003L

### TEM/TSEM SINGLE SPEED—IMPERIAL DIMENSIONS

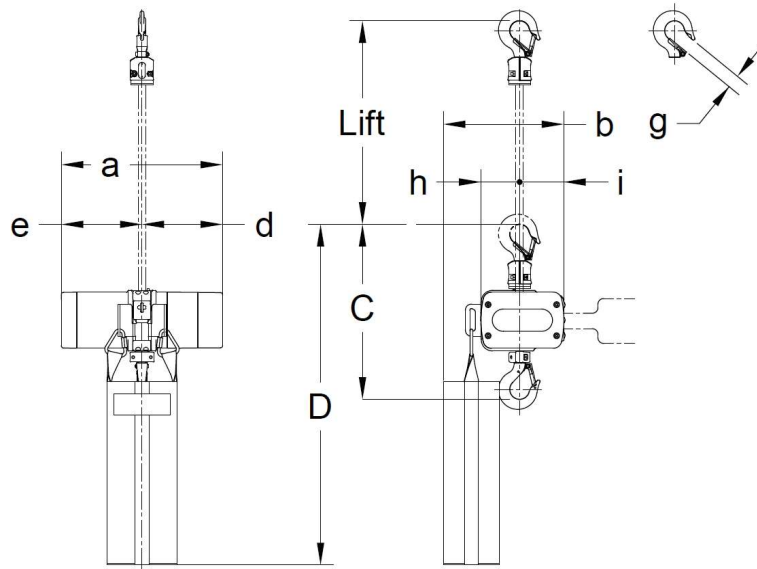
Capacity (lb)	Product Code	Headroom C	D	a	b	d	e	g	h	i
		in	in	in	in	in	in	in	in	in
500	TEM003L/TSEM003L	12,4	24,8	11,5	8,6	5,7	5,7	0,9	2,8	3,1
1000	TEM005C/TSEM005C	14,4	36,2	11,5	8,6	5,7	5,7	0,9	2,0	3,9

TEM THREE PHASE SINGLE SPEED — METRIC SPECIFICATIONS

Capacity (kg)	Product Code	Standard Lift (m)	Lifting Motor 3 Phase 60 Hz				Lifting Motor 3 Phase 50 Hz				Load Chain Diameter (mm) x Chain Fall Lines	Net Weight (kg)	Weight for Additional 1 ft. Lift (kg)
			Lifting Speed (m/min)	Output (kW)	Rated Current (amps)		Lifting Speed (m/min)	Output (kW)	Rated Current (amps)				
					@200-230V	@380-460V			@200-230V	@380-400V			
225	TEM003L	18	4.8	0.25	1.4	0.7	4	0.25	1.4	0.6	4.0 x 1	19	0.35
450	TEM005C		2.4	0.25	1.4	0.7	2	0.25	1.4	0.6	4.0 x 2	26.5	0.7

TSEM SINGLE PHASE SINGLE SPEED — METRIC SPECIFICATIONS

Capacity (kg)	Product Code	Standard Lift (m)	Lifting Motor 3 Phase 60 Hz				Load Chain Diameter (mm) x Chain Fall Lines	Net Weight (kg)	Weight for Additional 1 ft. Lift (kg)
			Lifting Speed (m/min)	Output (kW)	Rated Current (amps)				
					@115-120V	@220-230V			
225	TSEM003L	18	3.6	0.16	4.6	2.3	4.0 x 1	19	0.35
450	TSEM005C		1.8	0.16	4.6	2.3	4.0 x 2	26.5	0.7



TEM003L/TSEM003L

TEM/TSEM SINGLE SPEED — METRIC DIMENSIONS

Capacity (kg)	Product Code	Headroom C	D	a	b	d	e	g	h	i
		mm	mm	mm	mm	mm	mm	mm	mm	mm
250/225	TEM003L/TSEM003L	315	630	292	218	146	146	24	70	80
500/450	TEM005C/TSEM005C	366	920	292	218	146	146	24	50.5	99.5

## Krewmate TEM | TSEM Mini Entertainment Chain Hoist

### Technical Specifications & Dimensions



TEM003L/TSEM003L

#### TEM Three Phase Standard Hoist Specifications

**Capacity Range**  
500–1000 lbs/250–  
500kg

**Standard Voltages**  
(200-230)-3-60  
200-3-50  
(380-460)-3-60  
(380-400)-3-50

**Control Voltage**  
DC24V

**Duty Cycle**  
30 Minutes

**Classification**  
ASME H4  
JIS/ISO M5  
FEM 2m

**Conformance**  
UL1340/CSA 22.2  
ANSI E 1.6-2  
IGVV SQP2-2018  
CE rated

**Ratings**  
Hoist - IP65

**Standard Lift**  
60' (other lengths  
available)

**Standard Pendant &  
Power Supply Cord**  
2.5' (longer lengths  
available)

**Operating conditions**  
Recommended for -4°  
to +104° F and humidity  
of 85% or less

**Overload protection**  
Standard  
Electronic through SSR  
board

**Over-lifting protection**  
Standard  
Friction clutch outside  
of load path  
Upper limit switch

**Optional**  
Pendant (Pickle) - IP65  
Pendant Cord  
Chain Container -  
Canvas  
Power Supply Cord  
Hubbell, 7-Pin or 14-Pin  
Connectors  
Fixed Hook  
Direct Control

#### TSEM Single Phase Standard Hoist Specifications

**Capacity Range**  
500–1000 lbs/250–500  
kg

**Standard Voltages**  
(115-120)-1-60  
(220-230)-1-60

**Control Voltage**  
DC24V

**Duty Cycle**  
30 Minutes

**Classification**  
ASME H4  
JIS/ISO M5  
FEM 2m

**Conformance**  
UL1340/CSA 22.2  
ANSI E 1.6-2  
IGVV SQP2-2018  
CE rated

**Ratings**  
Hoist - IP65

**Standard Lift**  
60' (other lengths  
available)

**Standard Pendant &  
Power Supply Cord**  
2.5' (longer lengths  
available)

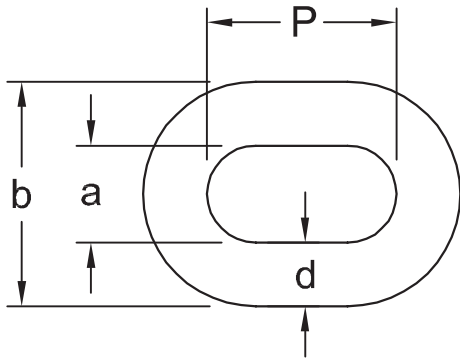
**Operating conditions**  
Recommended for +14°  
to +104° F and humidity  
of 85%  
or less

**Overload protection**  
Standard  
Electronic through SSR  
board

**Over-lifting protection**  
Standard  
Friction clutch outside  
of load path  
Upper limit switch

**Optional**  
Pendant (Pickle) - IP65  
Pendant Cord  
Chain Container -  
Canvas  
Power Supply Cord  
Hubbell, 7-Pin or 14-Pin  
Connectors  
Fixed Hook

# Chain & Hook Dimensions

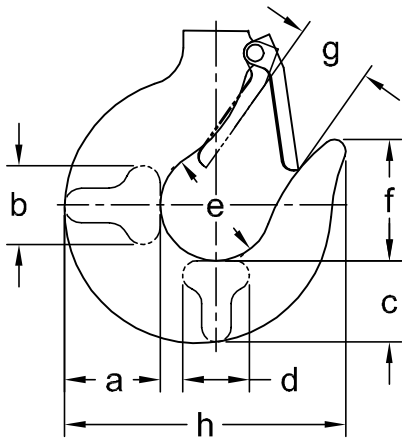


## TEM/TSEM CHAIN — IMPERIAL DIMENSIONS

Capacity (lb)	Product Code	d	a	b	P
		in	in	in	in
500 to 1000	(All Models)	0.16	0.20	0.53	0.48

## TEM/TSEM CHAIN — METRIC DIMENSIONS

Capacity (kg)	Product Code	d	a	b	P
		mm	mm	mm	mm
225 to 500	(All Models)	4.1	5.1	13.5	12.2



## TEM/TSEM HOOK — IMPERIAL DIMENSIONS

Capacity (lb)	Product Code	Hook*	a	b	c	d	e	f	g	h
			in	in	in	in	in	in	in	in
500 to 1000	(All Models)	B & C	0.8	0.5	0.7	0.5	1.4	1.4	0.9	3.0

\*B=body hook, C=chain hook

## TEM/TSEM HOOK — METRIC DIMENSIONS

Capacity (kg)	Product Code	Hook*	a	b	c	d	e	f	g	h
			mm	mm	mm	mm	mm	mm	mm	mm
225 to 500	(All Models)	B & C	20	13	18	13	36	36	23	76

\*B=body hook, C=chain hook