

Operating Instructions, Parts List, Warranty, & Warranty Repair Center

IMPORTANT! Read carefully before operating this tool. Failure to operate any power tool properly can result in personal injury and/or property damage!

Free Speed (RPM)	11,000	Wheel Size	4"
Air pressure (PSI)	90	Spindle Thread	3/8"-24 UNF
Hose Size (ID)	3/8"	Avg. Air Consump.(cfm).....	17
Air Inlet (NPT)	1/4"	Overall Length	9"
Weight (Lbs)	4		

1. Always wear approved eye protection.
2. Have throttle in "off" position when connecting to air supply.
3. Disconnect tool before performing service, changing accessories, or when not in use.
4. Always be in a safe working distance from others when using tools.
5. Keep tools clean and oiled for best and safest performance.
6. Follow instructions for lubricating and changing accessories.
7. Do not wear loose fitting clothing and remove watches and rings.
8. Always use proper hose and fittings. Never use quick change couplings attached at tool.
9. Keep proper footing and balance at all times.
10. Never carry tools by the hose. Keep hoses from heat, oil, and sharp edges. Check hoses for weak or worn condition before each use, making certain that all connections are secure.

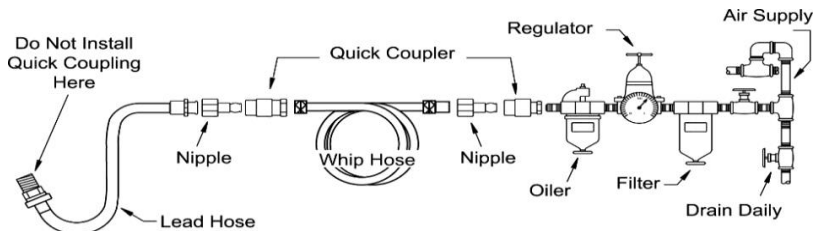
Lubrication

Lubricate the tool daily with a good grade of air tool oil. The oil can be applied directly into the air inlet of the tool and then run the tool. A rust inhibitor oil is acceptable for air tools.

Air Supply

Tools of this class operate on a wide range of air pressure. It is recommended that air pressure of these tools measure 90 PSI at the tool while running free. Higher pressure and unclean air will shorten the tool's life and may create a hazardous condition.

Water in the airline will cause damage to the tool. Ensure that the air tank is drained daily. Clean the air inlet filter screen on at least a weekly basis. The recommended hookup procedure can be viewed in the illustration below.



The air inlet, used for connecting air supply, has standard 1/4" NPT American Thread.

Line pressure should be increased to compensate for unusually long air hoses (over 25 feet). Minimum hose diameter should be 1/4" I.D. and fittings should have the same inside dimensions.

Operating Instructions

The air regulator can be used as an air throttle for setting positive speed control. Turn the air regulator lever up for maximum speed.

The air inlet used for connecting air supply has standard 1/4" NPT thread. Have throttle in "off" position when connecting to air supply. Disconnect tool before performing service, changing accessories and when not in use. Always use tool at a safe distance from other people in the work area.

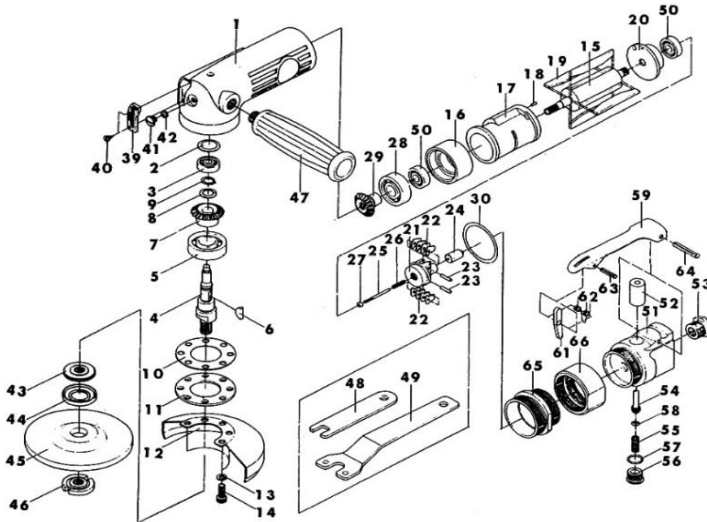
WARNING: Make sure the RPM rating of the grinding discs correspond with the manufacturer's recommended speed of the tool.

Maintenance

Other factors outside the tool may cause loss of power or erratic action. Reduced Compressor output, excessive drain on the air line, moisture or restriction in air lines or the use of hose connections of improper size or poor condition may reduce air supply. Dirt or gum deposits in the tool may cut power. This may be corrected by cleaning the air strainer and flushing out the tool with gum solvent oil. If outside conditions are in order and tool is out-of-warranty, clean, reassemble, and re-lubricate, or take tool to any air tool service center. For tools in warranty period, send tool direct to Warranty Center.

Model # G3440

4" Angle Grinder



No.	Part No.	Description	No.	Part No.	Description
1	G3440-01	Motor Housing	30	G3440-30	O-Ring
2	G3440-02	Seal Plate	39	G3440-39	Exhaust Deflector
3	G3440-03	Ball Bearing	40	G3440-40	Tapping Screw
4	G3440-04	Arbor	41	G3440-41	Plug
5	G3440-05	Ball Bearing	42	G3440-42	O-Ring
6	G3440-06	Woodruff Key	43	G3440-43	Flange
7	G3440-07	Bevel Gear	44	G3440-44	Flange Rubber Shield
8	G3440-08	Wave Washer	45	G3440-45	Grinding Wheel
9	G3440-09	External Stop Ring	46	G3440-46	Flange Nut
10	G3440-10	Gasket	47	G3440-47	Handle
11	G3440-11	Retainer	48	G3440-48	Wrench (A)
12	G3440-12	Center Wheel Guard	49	G3440-49	Wrench (B)
13	G3440-13	Spring Washer	50	G3440-50	Ball Bearing
14	G3440-14	Hex Socket Head Cap Bolt	51	G3440-51	Throttle Valve Housing Include G3440-52
15	G3440-15	Rotor	53	G3440-53	Air Inlet Bushing
16	G3440-16	Front End Plate	54	G3440-54	Valve Stem
17	G3440-17	Cylinder	55	G3440-55	Valve Spring
18	G3440-18	Spring Pin	56	G3440-56	Throttle Lever Plug
19	G3440-19	Rotor Blade	57	G3440-57	O-Ring
20	G3440-20	Rear End Plate	58	G3440-58	O-Ring
21	G3440-21	Governor	59	G3440-59	Throttle Lever
22	G3440-22	Pendulum (2)	61	G3440-61	Throttle Lever Lock
23	G3440-23	Spring Pin (2)	62	G3440-62	Torsion Spring
24	G3440-24	Plunger	63	G3440-63	Spring Pin
25	G3440-25	Adjust Screw	64	G3440-64	Spring Pin
26	G3440-26	Spring	65	G3440-65	Lock Ring
27	G3440-27	Adjust Nut	66	G3440-66	Coupling Nut
28	G3440-28	Ball Bearing			
29	G3440-29	Bevel Pinion			

PLEASE READ FOLLOWINGS CAREFULLY BEFORE OPERATING:

- 1) Always wear Safety Goggles to guard against eye injuries caused by flying particles.
- 2) Light density, non-detergent lubricant oil (i.e.#60) recommended.
- 3) Use working pressure of 0-90 PSIG, regular speed: 11,000 RPM.

Notice

90% of all Air Tool problems are caused by moisture in air lines

This problem can be avoided by using Air Tool Lubricant (See “Lubrication” & “Air Supply” section of this manual)

FAILURE TO OIL can void your warranty

Warning: Dust created by power sanding, sawing, grinding, drilling, and other activities contains particles and chemicals known to cause cancer, birth defects or reproductive harm. Some examples of these chemicals are:

- Lead from lead-based paints
- Crystalline silica from bricks, cement and other masonry products
- Arsenic and chromium from chemically treated lumber

To reduce your exposure to these chemicals, work in well ventilated areas with approved safety equipment specially designed to filter out microscopic particles.

One Year Limited Warranty

GLOBAL Industrial air tools carry a limited 1 year warranty to be free from defects in material and workmanship for one year from date of purchase. We will repair or replace at our discretion any defective part or unit which proves to be defective in material or workmanship during this 1 year period. The foregoing obligation is GLOBAL sole liability under this or any implied warranty, and under no circumstances shall it be liable for any incidental or consequential damages.

Repairs required by abuse, misuse, damage, or repair attempts (other than GLOBAL Industrial) are not covered by this warranty.

For warranty claims and returns, please contact GLOBAL Industrial at 1-800-645-2986 or speak to your local sales representative. Be certain to include your name, address, and purchase date, and description of the suspected defect.



11 Harbor Park Drive, Port Washington, NY 11050

Phone: 1-800-645-2986