



Model # G3499A Heavy Duty Pneumatic/ Hydraulic Blind Riveter

Operating Instructions, Parts List, Warranty, & Warranty Repair Center

IMPORTANT! Read carefully before operating this tool. Failure to operate any power tool properly can result in personal injury and/or property damage!

Blind Rivet Setting Capacity..... Max.9/32"	Rivet Size	3/16",1/4"
Traction Power (Lbs).....3300	Avg. Air Consump.(cfm).....	1.0
Air pressure (PSI)	Overall Length	12-1/2"
Hose Size (ID)	Weight (Lbs)	5.3
Air Inlet (NPT)		1/4"

Safety

1. Always wear approved eye protection.
2. Have throttle in "off" position when connecting to air supply.
3. Disconnect tool before performing service, changing accessories, or when not in use.
4. Always be in a safe working distance from others when using tools.
5. Keep tools clean and oiled for best and safest performance.
6. Follow instructions for lubricating and changing accessories.
7. Do not wear loose fitting clothing and remove watches and rings.
8. Always use proper hose and fittings. Never use quick change couplings attached at tool.
9. Keep proper footing and balance at all times.
10. Never carry tools by the hose. Keep hoses from heat, oil, and sharp edges. Check hoses for weak or worn condition before each use, making certain that all connections are secure.

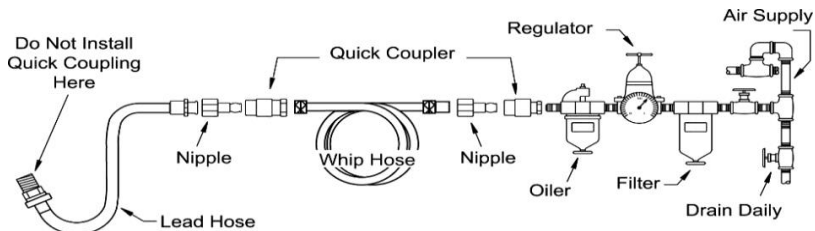
Lubrication

Lubricate the tool daily with a good grade of air tool oil. The oil can be applied directly into the air inlet of the tool and then run the tool. A rust inhibitor oil is acceptable for air tools.

Air Supply

Tools of this class operate on a wide range of air pressure. It is recommended that air pressure of these tools measure 90 PSI at the tool while running free. Higher pressure and unclean air will shorten the tool's life and may create a hazardous condition.

Water in the airline will cause damage to the tool. Ensure that the air tank is drained daily. Clean the air inlet filter screen on at least a weekly basis. The recommended hookup procedure can be viewed in the illustration below.



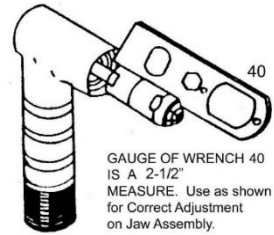
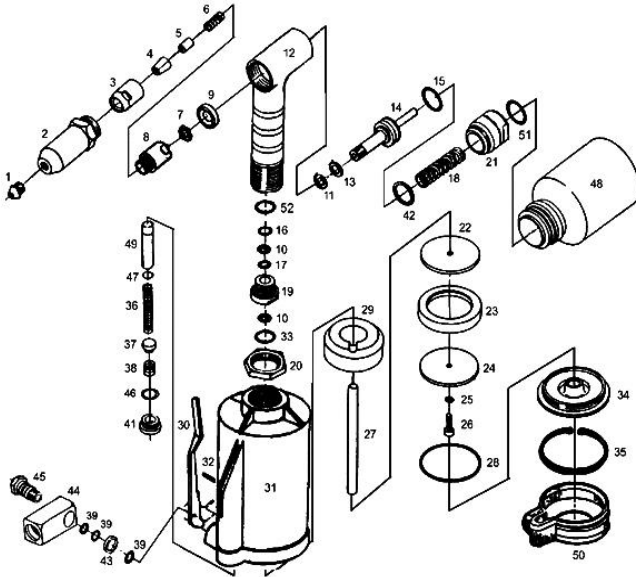
The air inlet, used for connecting air supply, has standard 1/4" NPT American Thread.

Line pressure should be increased to compensate for unusually long air hoses (over 25 feet). Minimum hose diameter should be 1/4" I.D. and fittings should have the same inside dimensions.

Maintenance

Other factors outside the tool may cause loss of power or erratic action. Reduced Compressor output, excessive drain on the air line, moisture or restriction in air pipes or the use of hose connections of improper size or poor condition may reduce air supply. Grit or gum deposits in the tool may cut power and may be corrected by cleaning the air strainer and flushing out the tool with gum solvent oil or an equal mixture of SAF#10 oil and kerosene. If outside conditions are in order and tool is out-of-warranty, clean, reassemble, and re-lubricate, or take tool to any air tool service center. For tools in warranty period, send tool direct to Warranty Center.

Model # G3499A Heavy Duty Pneumatic/ Hydraulic Blind Riveter



STANDARD ACCESSORIES:

Index	P/N	Description
1A.	11519	5/32" Nosepiece
1B.	11517	3/16" Nosepiece
1D.	11518	9/32" Nosepiece
4.	11508	Jaws (3pcs / set)
40	11559	Wrench
48	11548	Plastic Bottle
	11561	Spanner (19/21mm)
	17519	Wrench 17/19mm

" * " REPAIR KIT ==> T115RK

No.	Part No.	Description	No.	Part No.	Description
1C.	11516	1/4" Nosepiece	26	11527	Piston Head Lock Screw
2	11515	Head	27	11522	Plunger Rod
3	11509	Jaw Housing	*28	11531	O-Ring Seal
4	11508	Jaws (3)	29	11530	Damping Ring
5	11507	Jaw Pusher	30	11538	Trigger Arm
*6	11505	Spring	31	11529	Air Cylinder Body
7	11504	Nut	32	23105	Roll Pin
8	11506	Jaw Housing Coupler	*33	11558	O-Ring Washer
*9	11556	Wiper Ring	34	11535	Air Cylinder Cap
*10	11520	X-Ring Seal (2)	35	11514	Clip
*11	11502	X-Ring Washer	*36	11541	Valve Spring
12	11555	Hydraulic Section	*37	11542	Valve Plate
*13	11554	X-Ring Seal	*38	10544	Valve Pressure Spring
14	115510	Hydraulic Plunger	*39	10548	O-Ring Seal (3)
*15	11501	O-Ring Seal	41	10550	Screw Plug
*16	11511	Guide Washer	*42	11549	Washer
*17	11512	Ring Washer	43	10549	Sealing Washer
*18	11553	Hydraulic Return Spring	44	10546	1/4" Air Inlet Fitting (F)
19	11557	Hydraulic Rod Guide	45	10547	Air Inlet Plug
20	10421	Lock Nut	*46	10540	Washer Seal
21	115100A	Screw Plug	*47	11560	O-Ring Seal
22	11523	Front Piston Head Disc	49	115390	Valve Tube
*23	11524	Piston Head Packing Ring	50	11570	Rubber Cushion
24	11525	Rear Piston Head Disc	51	R36x3	O-Ring Seal
*25	11526	Piston Head Spring Washer	*52	11540	O-Ring (20x1.2)

Notice

90% of all Air Tool problems are caused by moisture in air lines

This problem can be avoided by using Air Tool Lubricant (See “Lubrication” & “Air Supply” section of this manual)

FAILURE TO OIL can void your warranty

Warning: Dust created by power sanding, sawing, grinding, drilling, and other activities contains particles and chemicals known to cause cancer, birth defects or reproductive harm. Some examples of these chemicals are:

- Lead from lead-based paints
- Crystalline silica from bricks, cement and other masonry products
- Arsenic and chromium from chemically treated lumber

To reduce your exposure to these chemicals, work in well ventilated areas with approved safety equipment specially designed to filter out microscopic particles.

One Year Limited Warranty

GLOBAL Industrial air tools carry a limited 1 year warranty to be free from defects in material and workmanship for one year from date of purchase. We will repair or replace at our discretion any defective part or unit which proves to be defective in material or workmanship during this 1 year period. The foregoing obligation is GLOBAL sole liability under this or any implied warranty, and under no circumstances shall it be liable for any incidental or consequential damages.

Repairs required by abuse, misuse, damage, or repair attempts (other than GLOBAL Industrial) are not covered by this warranty.

For warranty claims and returns, please contact GLOBAL Industrial at 1-800-645-2986 or speak to your local sales representative. Be certain to include your name, address, and purchase date, and description of the suspected defect.



11 Harbor Park Drive, Port Washington, NY 11050

Phone: 1-800-645-2986