



Model # G3489
6" Dual Action Sander

Operating Instructions, Parts List, Warranty, & Warranty Repair Center

IMPORTANT! Read carefully before operating this tool. Failure to operate any power tool properly can result in personal injury and/or property damage!

Free Speed (RPM)	10,000	Disc Size	6"
Air pressure (PSI)90	Avg. Air Consump.(cfm).....	4
Hose Size (ID)	3/8"	Overall Length	9-1/2"
Air Inlet (NPT)	1/4"	Weight (Lbs)	4

Safety

1. Always wear approved eye protection.
2. Have throttle in "off" position when connecting to air supply.
3. Disconnect tool before performing service, changing accessories, or when not in use.
4. Always be in a safe working distance from others when using tools.
5. Keep tools clean and oiled for best and safest performance.
6. Follow instructions for lubricating and changing accessories.
7. Do not wear loose fitting clothing and remove watches and rings.
8. Always use proper hose and fittings. Never use quick change couplings attached at tool.
9. Keep proper footing and balance at all times.
10. Never carry tools by the hose. Keep hoses from heat, oil, and sharp edges. Check hoses for weak or worn condition before each use, making certain that all connections are secure.

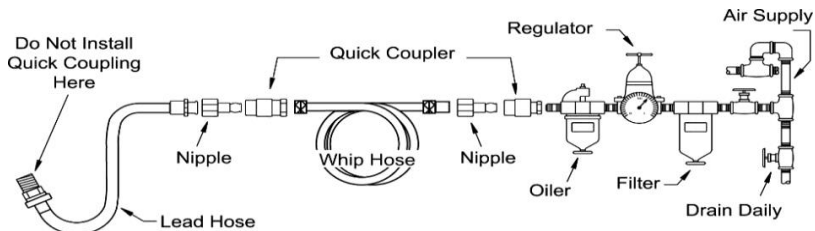
Lubrication

Lubricate the tool daily with a good grade of air tool oil. The oil can be applied directly into the air inlet of the tool and then run the tool. A rust inhibitor oil is acceptable for air tools.

Air Supply

Tools of this class operate on a wide range of air pressure. It is recommended that air pressure of these tools measure 90 PSI at the tool while running free. Higher pressure and unclean air will shorten the tool's life and may create a hazardous condition.

Water in the airline will cause damage to the tool. Ensure that the air tank is drained daily. Clean the air inlet filter screen on at least a weekly basis. The recommended hookup procedure can be viewed in the illustration below.

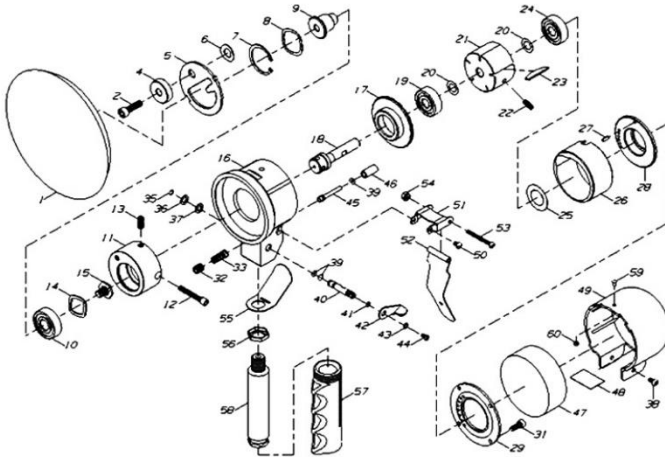


The air inlet, used for connecting air supply, has standard 1/4" NPT American Thread.

Line pressure should be increased to compensate for unusually long air hoses (over 25 feet). Minimum hose diameter should be 1/4" I.D. and fittings should have the same inside dimensions.

Maintenance

Other factors outside the tool may cause loss of power or erratic action. Reduced Compressor output, excessive drain on the air line, moisture or restriction in air pipes or the use of hose connections of improper size or poor condition may reduce air supply. Grit or gum deposits in the tool may cut power and may be corrected by cleaning the air strainer and flushing out the tool with gum solvent oil or an equal mixture of SAF#10 oil and kerosene. If outside conditions are in order and tool is out-of-warranty, clean, reassemble, and re-lubricate, or take tool to any air tool service center. For tools in warranty period, send tool direct to Warranty Center.



No.	Part No.	Description	No.	Part No.	Description
1	101001-5	5" Foam Pad	31	101031	Rotor Screw (4)
1	101001-6	6" Foam Pad/Velcro	32	101032	Cap Screw
2	101002	Cap Screw	33	101033	Throttle Spring
4	101004	Balance Nut	35	R-5056	Retaining Ring
5	101005	Drive Cover	36	101036	Plate Washer
6	101006	Wave Washer	37	101037	Rubber Washer
7	R-R344	Retaining Ring	38	101038	Screw (2)
8	101008	Wave Washer	39	O-0300-165	O-Ring (3)
9	101009	Pad Mounting Shaft	40	101040	Regulator
10	6201-LLUA	Ball Bearing	41	O-0250-150	O-Ring
11	101011	Random Balance Body	42	101042	Regulator Switch
12	101012	Socket Head Cap Screw	43	101043	Lock Washer
13	101013	Fixing Screw	44	101044	Screw
14	101014	Wave Washer	45	101045	Push Rod
15	101015	Cap Screw	46	101046	Valve Body Bushing
16	101016	Body	47	101047	Muffler
17	101017	Rear Plate	48	101048	Muffler Element
18	101018	Rotor Shaft	49	101049	Motor Cover
19	6200-ZZ0A	Ball Bearing	50	101050	Screw (2)
20	101020	Shim (4)	51	101051	Lever Bracket
21	101021	Rotor	52	101052	Throttle Lever/Safety
22	101022	Set Screw	53	101053	Screw
23	101023	Rotor Blade (5)	54	101054	Nut
24	6200-Z00A	Ball Bearing	55	101055	Lever Booster
25	101025	Bearing Shield	56	101056	Lever Jam Nut
26	101026	Cylinder	57	101057	Plastic Handle
27	101027	Pin	58	101058	Hose Adapter
28	101028	Front Plate	59	101049A	Rivet
29	101029	Rotor Fixing Cover	60	101049B	Bushing

PLEASE READ FOLLOWINGS CAREFULLY BEFORE OPERATING:

- 1) Always wear Safety Goggles to guard against eye injury caused by flying particles.
- 2) Use light density, non-detergent lubricant oil (i.e. #60) recommended.
- 3) Use working pressure of 0-90 PSIG, regular speed: 10,000 RPM.

Notice

90% of all Air Tool problems are caused by moisture in air lines

This problem can be avoided by using Air Tool Lubricant (See “Lubrication” & “Air Supply” section of this manual)

FAILURE TO OIL can void your warranty

Warning: Dust created by power sanding, sawing, grinding, drilling, and other activities contains particles and chemicals known to cause cancer, birth defects or reproductive harm. Some examples of these chemicals are:

- Lead from lead-based paints
- Crystalline silica from bricks, cement and other masonry products
- Arsenic and chromium from chemically treated lumber

To reduce your exposure to these chemicals, work in well ventilated areas with approved safety equipment specially designed to filter out microscopic particles.

One Year Limited Warranty

GLOBAL Industrial air tools carry a limited 1 year warranty to be free from defects in material and workmanship for one year from date of purchase. We will repair or replace at our discretion any defective part or unit which proves to be defective in material or workmanship during this 1 year period. The foregoing obligation is GLOBAL sole liability under this or any implied warranty, and under no circumstances shall it be liable for any incidental or consequential damages.

Repairs required by abuse, misuse, damage, or repair attempts (other than GLOBAL Industrial) are not covered by this warranty.

For warranty claims and returns, please contact GLOBAL Industrial at 1-800-645-2986 or speak to your local sales representative. Be certain to include your name, address, and purchase date, and description of the suspected defect.



11 Harbor Park Drive, Port Washington, NY 11050

Phone: 1-800-645-2986