

User Manual

Manual de Usuario

Manuel de l'Utilisateur

Customer Service
US: 1-800-645-2986

Servicio de atención al Cliente
US: 1-800-645-2986

Service à la clientèle
Canada: 888-645-2986

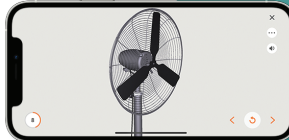
Industrial Pedestal Fan

Model: 585280

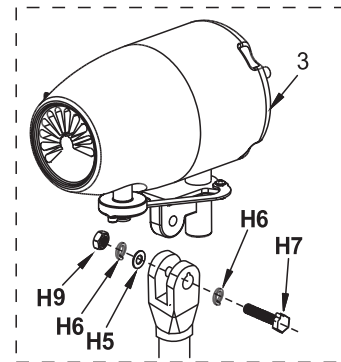
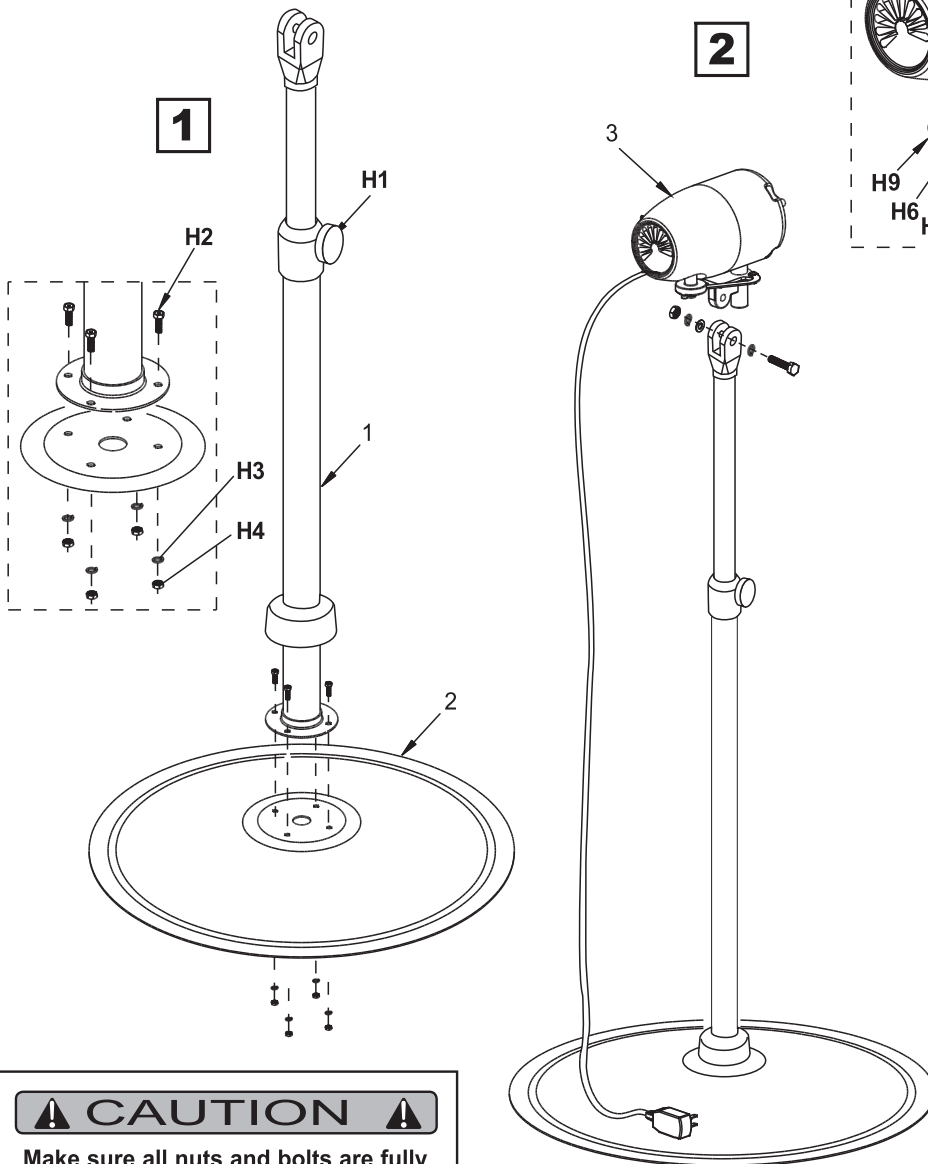
BEFORE YOU BEGIN



Scan for easy 3D instructions
Download the BILT app before you begin



Download on the App Store | GET IT ON Google Play



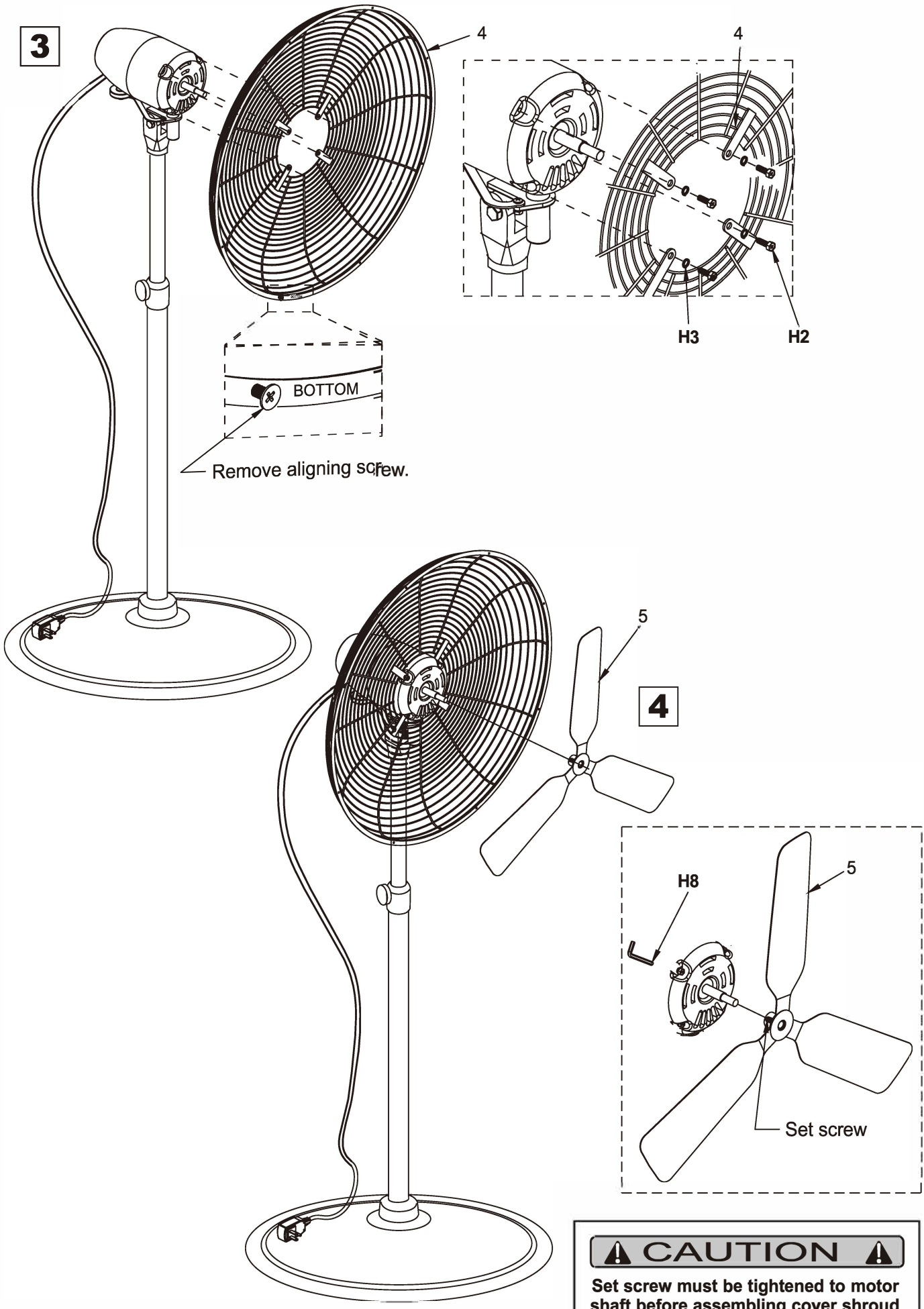
CONTENTS

Ref.	Qty.	Description
1	1	Post
2	1	Base Plate
3	1	Fan Motor
4	1	Back Shroud
5	1	Fan Blade
6	1	Cover Shroud
H1	1	M6 x 1.0 Adjustment Knob
H2	8	M6 x 1.0 x 18mm Lg. Hex Bolt
H3	8	Split Washer - Φ6 x1.8mm
H6	1	Split Washer - Φ10 x2.0mm
H4	4	M6 x 1.0mm Hex Nut
Øç	1	Όϊδ "ϊοέ³³ Ø" Ό«¬
H5	1	Όϊδ Ð'ι·² Έις,»®
H7	1	M10 x 1è mm Lg. Hex Bolt
H8	1	4mm Allen Key

CAUTION

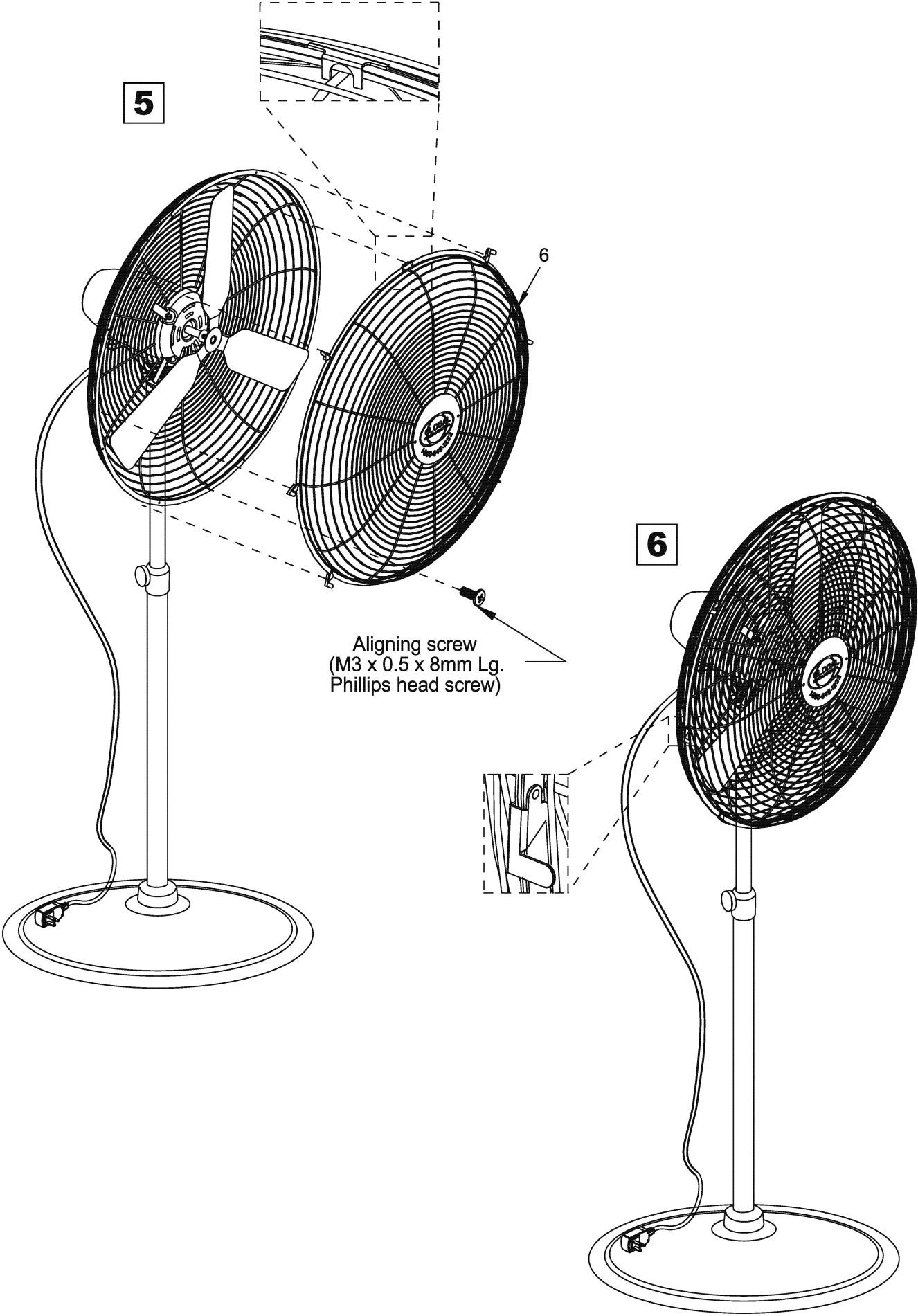
Make sure all nuts and bolts are fully tightened before assembling fan motor.

Industrial Pedestal Fan



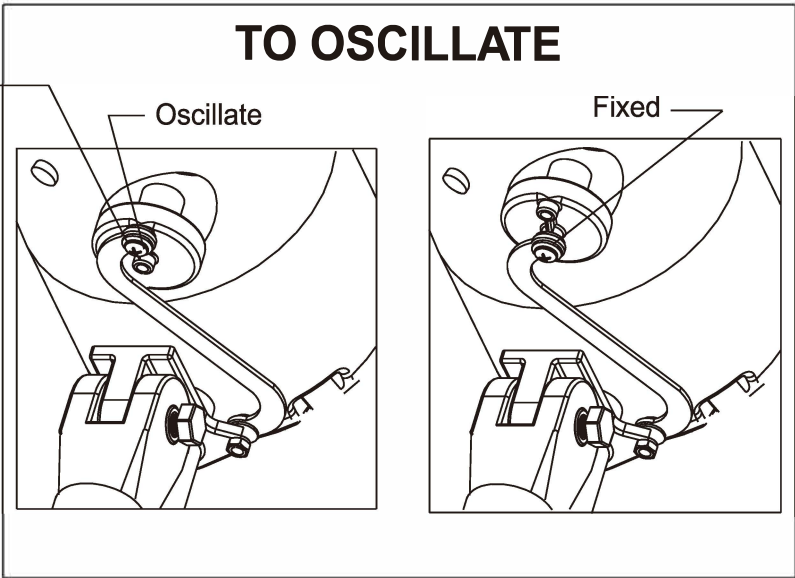
⚠ CAUTION ⚠
Set screw must be tightened to motor shaft before assembling cover shroud.

Industrial Pedestal Fan



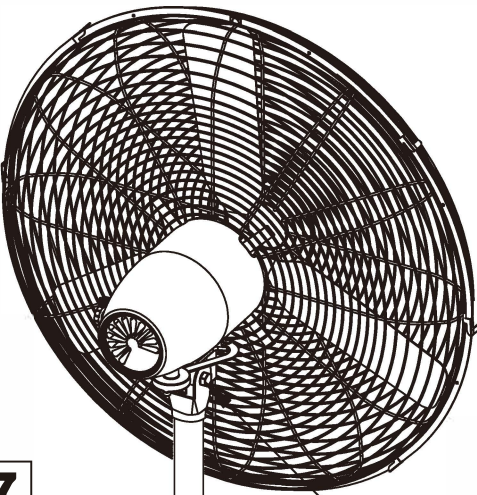
Industrial Pedestal Fan

CAUTION
Unplug prior to adjusting.



M6 x 1.0 Phillips shoulder screw

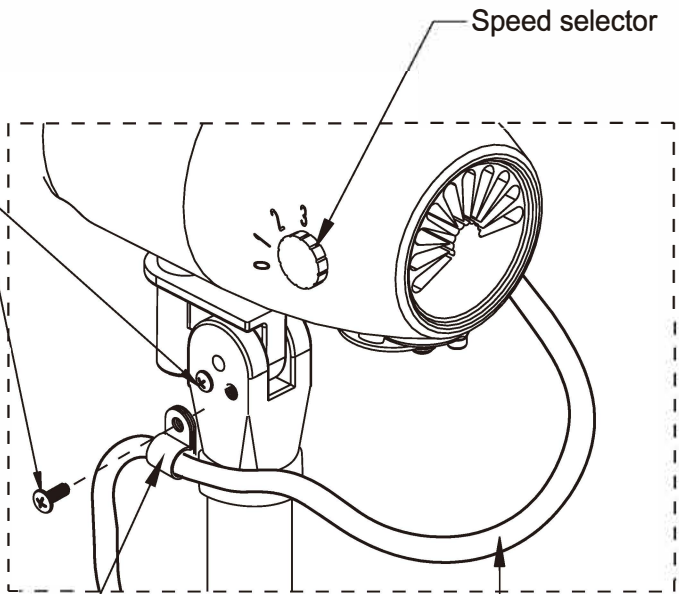
7



Angle adjustment bolt

Height adjustment knob

M5 x 0.8 x 8mm
Phillips pan head screw



Speed selector

Power cord clamp

Power cord

User Manual

Manual de Usuario

Manuel de l'Utilisateur

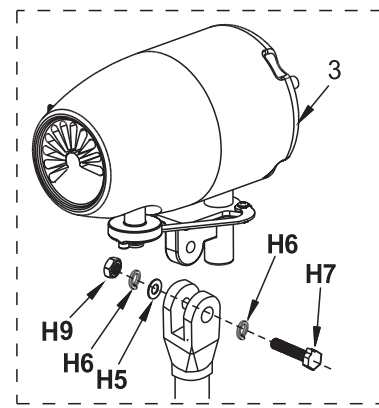
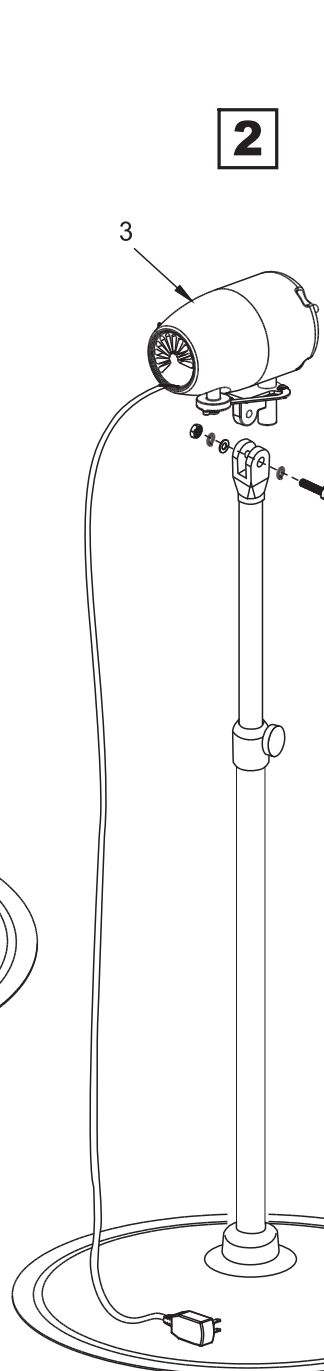
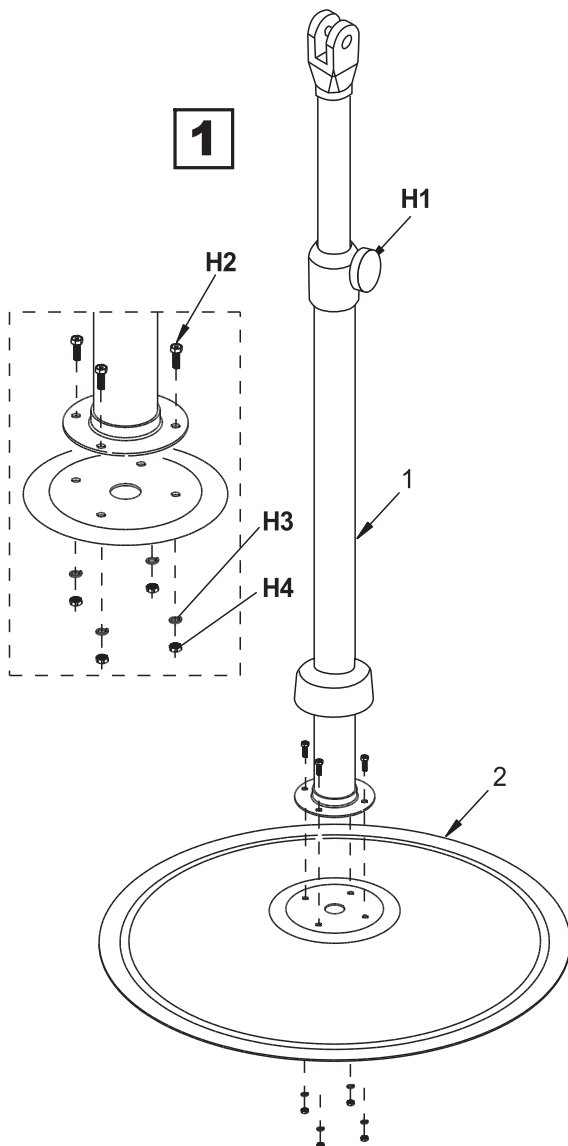
Customer Service
US: 1-800-645-2986

Servicio de atención al Cliente
US: 1-800-645-2986

Service à la clientèle
Canada: 888-645-2986

Ventilador de pie industrial

Modelos: 585279 585280

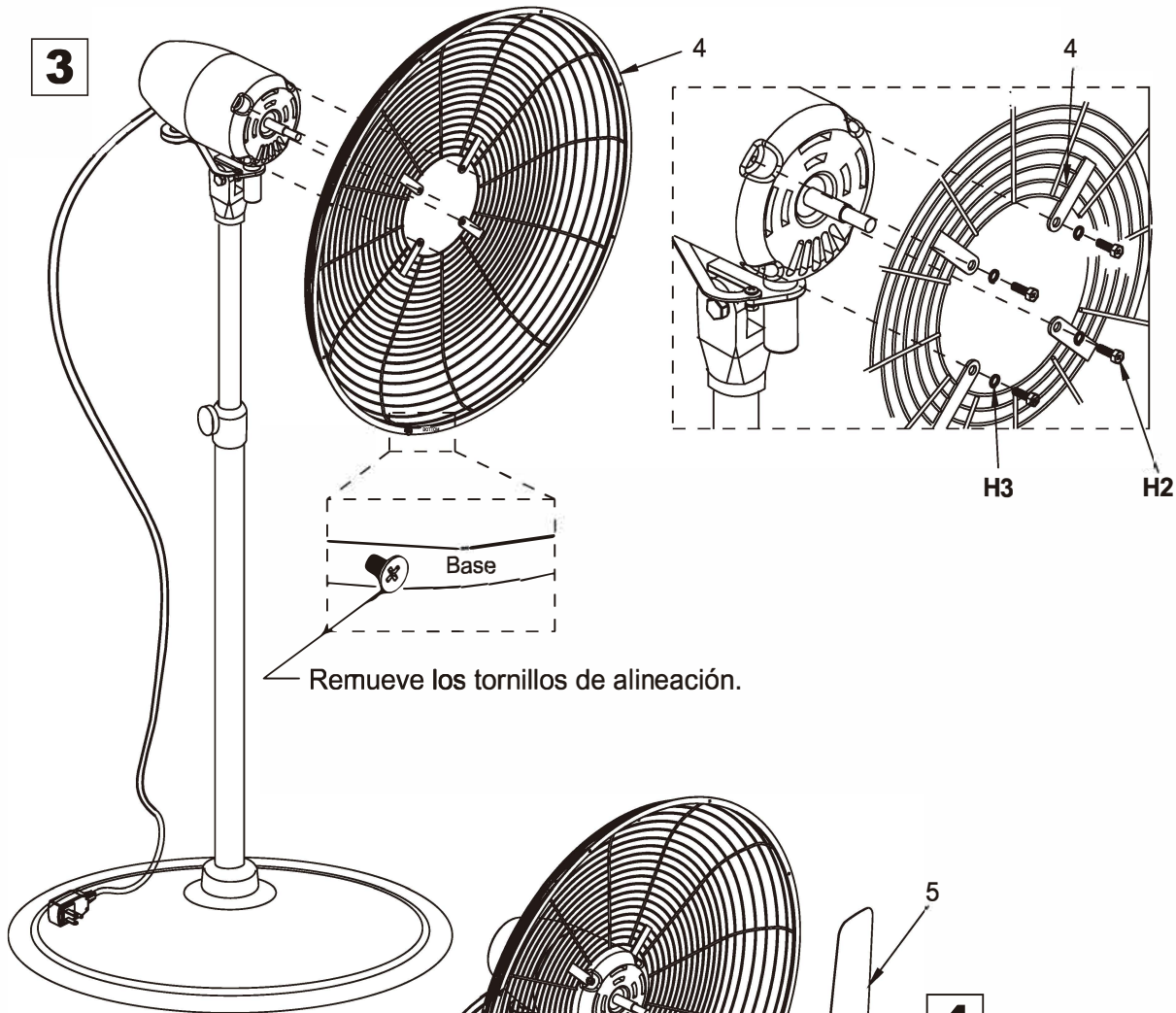


CONTENIDOS		
Ref.	Cant.	Descripción
1	1	Poste
2	1	Placa Base
3	1	Motor
4	1	Cubierta Trasera
5	1	Aspas
6	1	Cubierta Carcaza
H1	1	Perilla Adjustment M6 x1.0
H2	8	Perno de Cabeza Hexagonal de M6 x 1.0 x 18mm Lg.....
H3	8	Arandela Partida $\Phi 6 \times 1.8\text{mm}$
H6	2	Arandela Partida $\Phi 10 \times 2.0\text{mm}$
H4	4	Tuerca Hexagonal de M6 x 1.0
H9	1	Tuerca Hexagonal de M10 x 1.5mm
H5	1	Arandela plana M10.....
H7	1	Perno de Cabeza Hexagonal... de M10 x 38mm Lg.
H8	1	Llave Hexagonal 4mm.....

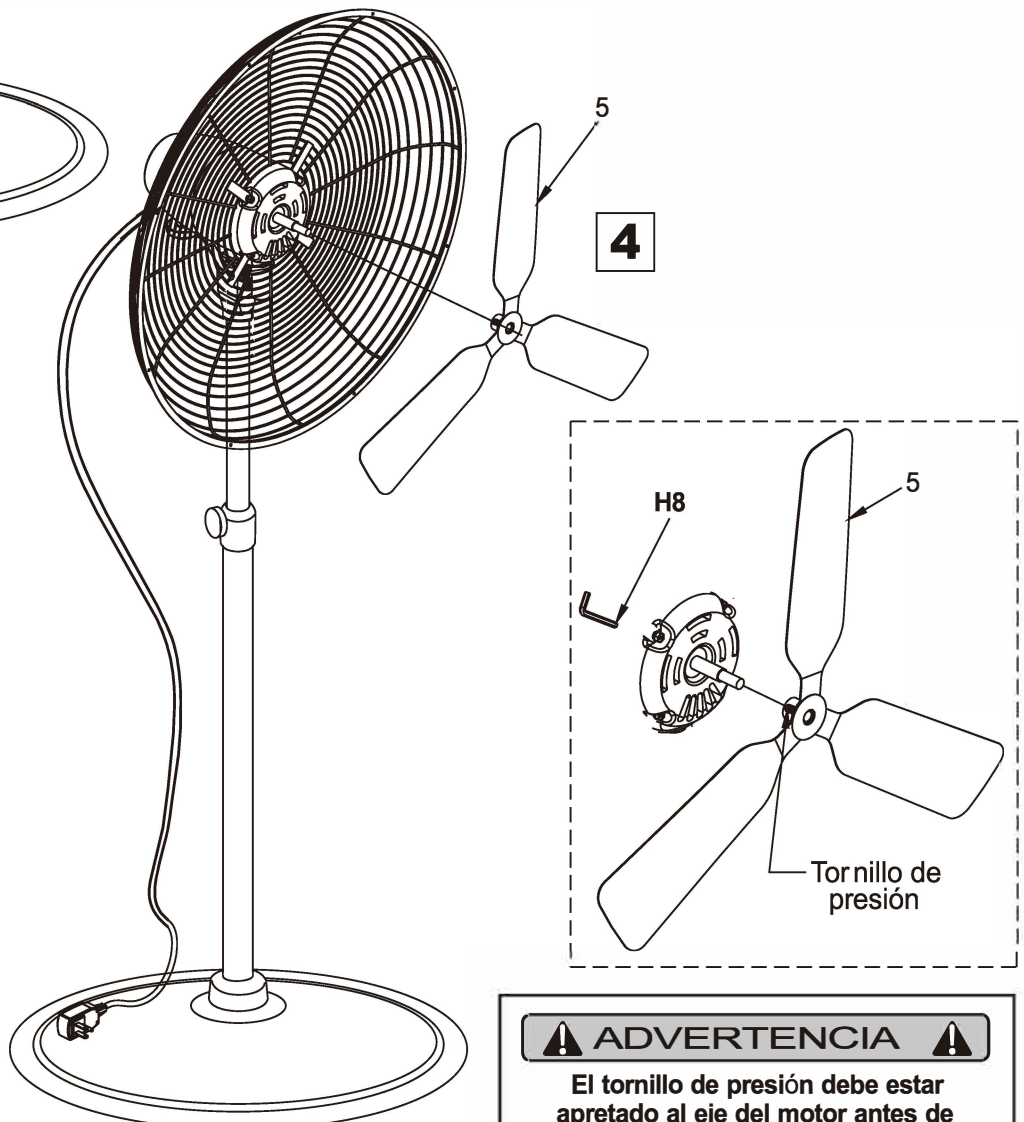
⚠ ADVERTENCIA ⚠

Asegúrate que todas las tuercas y tornillos estén completamente apretados antes de ensamblar el motor del ventilador.

Ventilador de pie industrial



Remueve los tornillos de alineación.

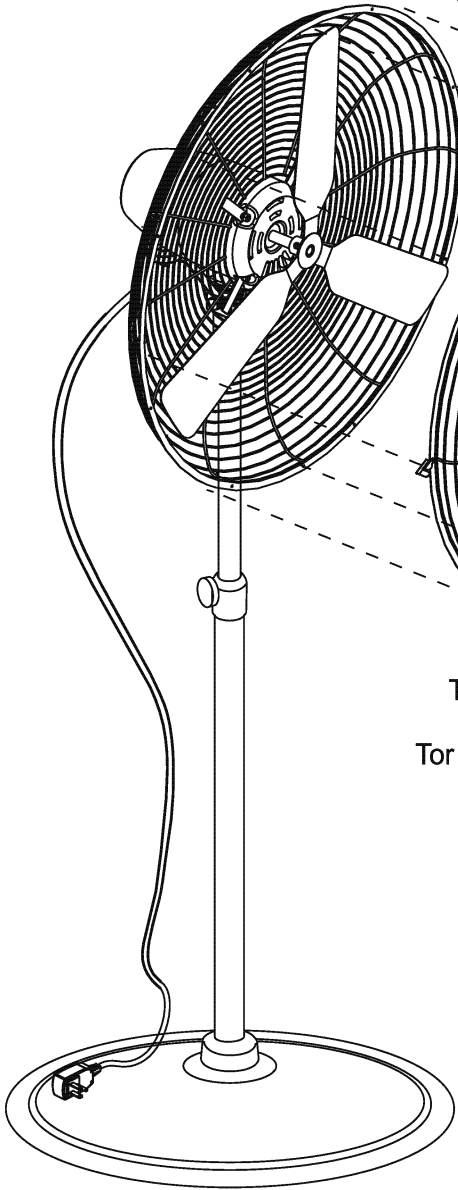
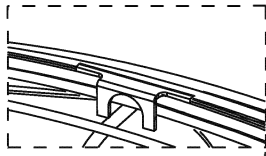


⚠ ADVERTENCIA ⚠

El tornillo de presión debe estar apretado al eje del motor antes de ensamblar la cubierta.

Ventilador de pie industrial

5

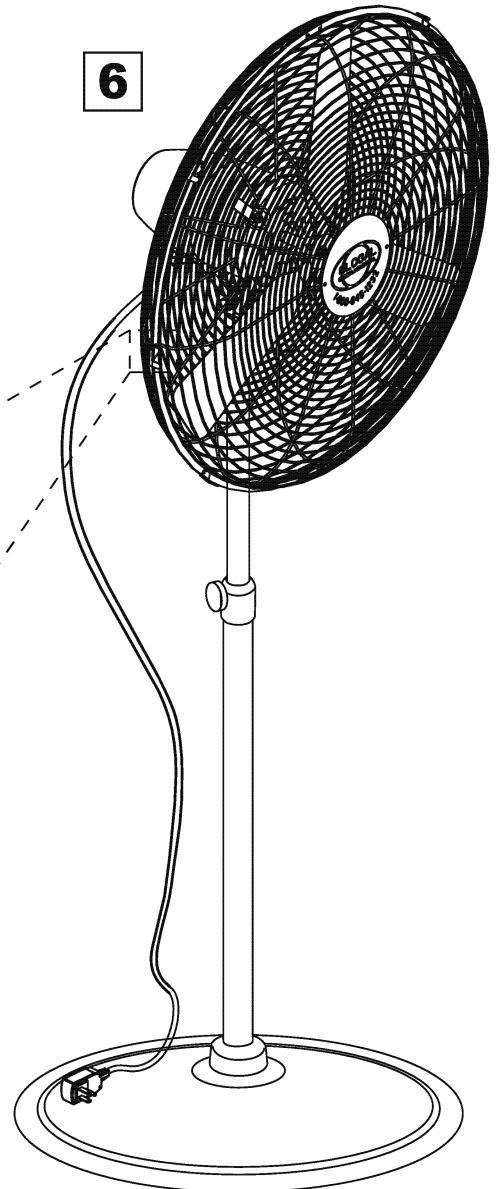


Tornillo de alineación.
(M3 x 0.5 x 8mm Lg.
Tornillo de cabeza Phillips)



6

6



ADVERTENCIA

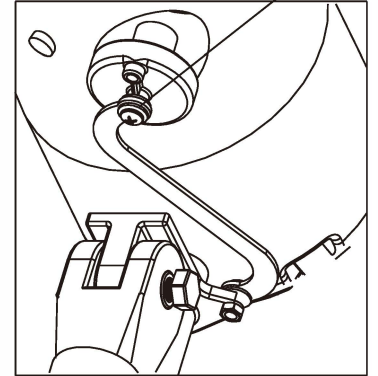
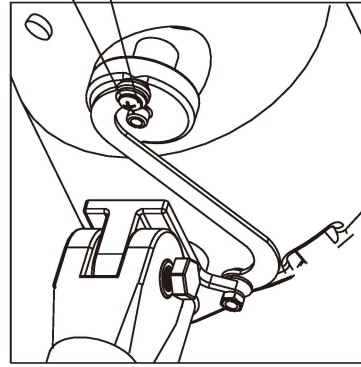
Retire antes de ajustar.

PARA OSCILAR

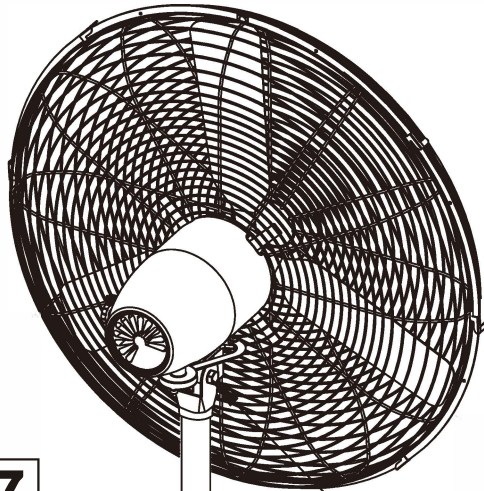
Tornillo Shoulder Phillips M6 x 1.0

Oscilar

Fijo



7

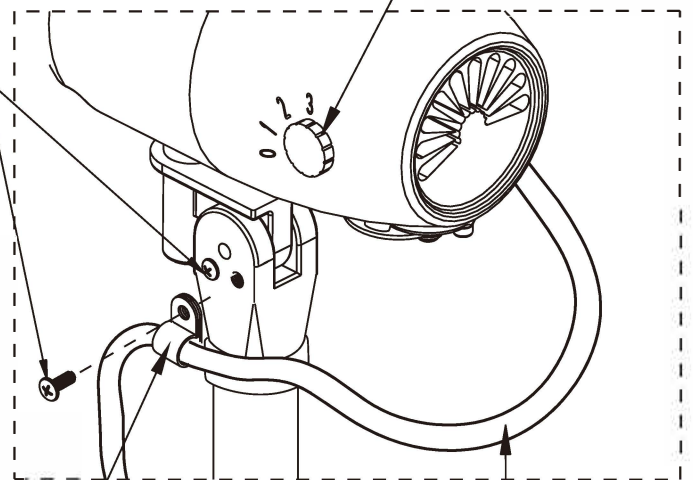


Perno de ajuste de ángulo

Perilla de ajuste de altura

Tornillo de cabeza plana con ranura M5 x 0.8 x 8mm

Selector de velocidad



Cable de alimentación

Abrazadera del cable de alimentación

User Manual

Manual de Usuario

Manuel de l'Utilisateur

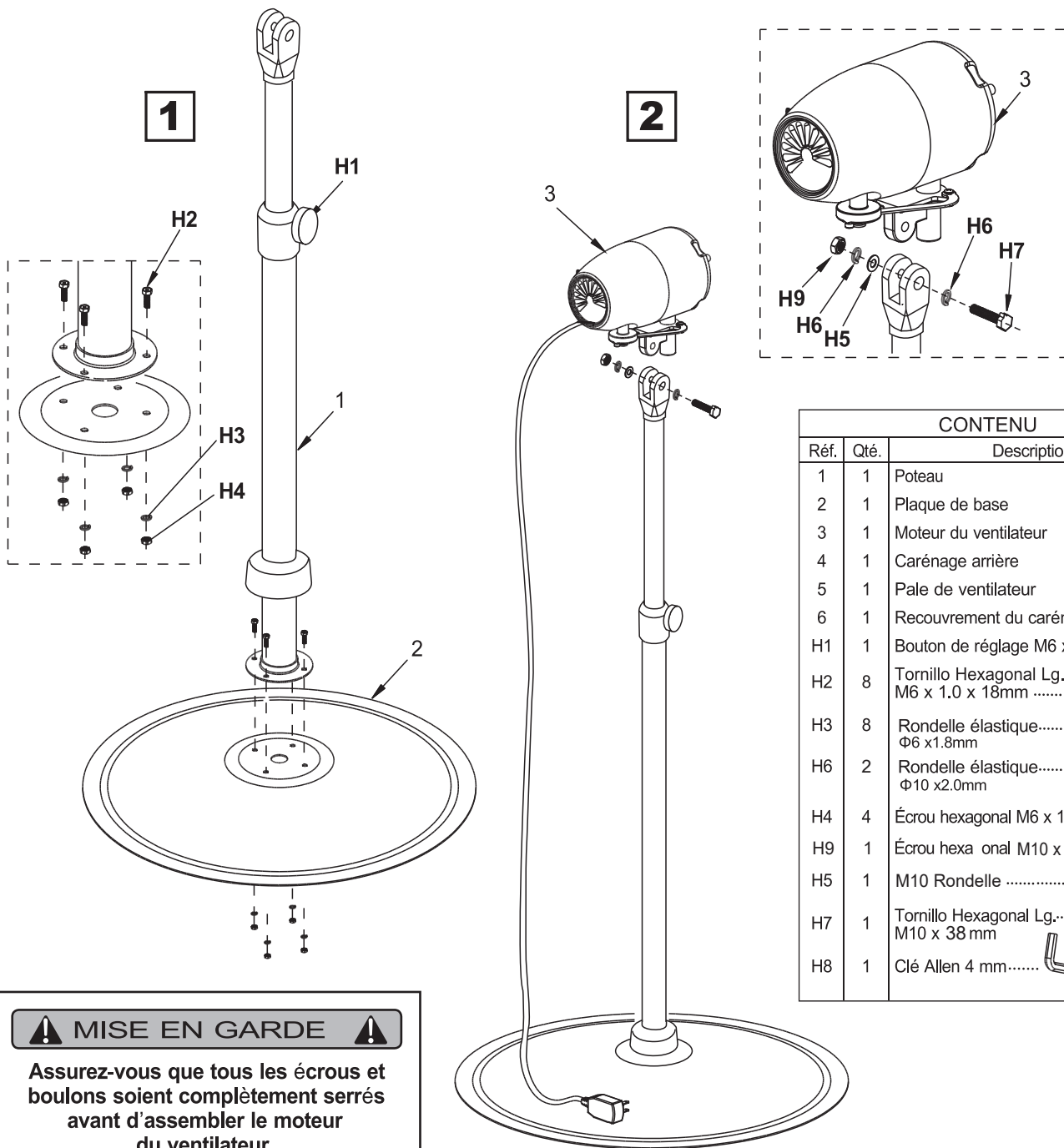
Customer Service
US: 1-800-645-2986

Servicio de atención al Cliente
US: 1-800-645-2986

Service à la clientèle
Canada: 888-645-2986

Ventilateur industriel sur pied

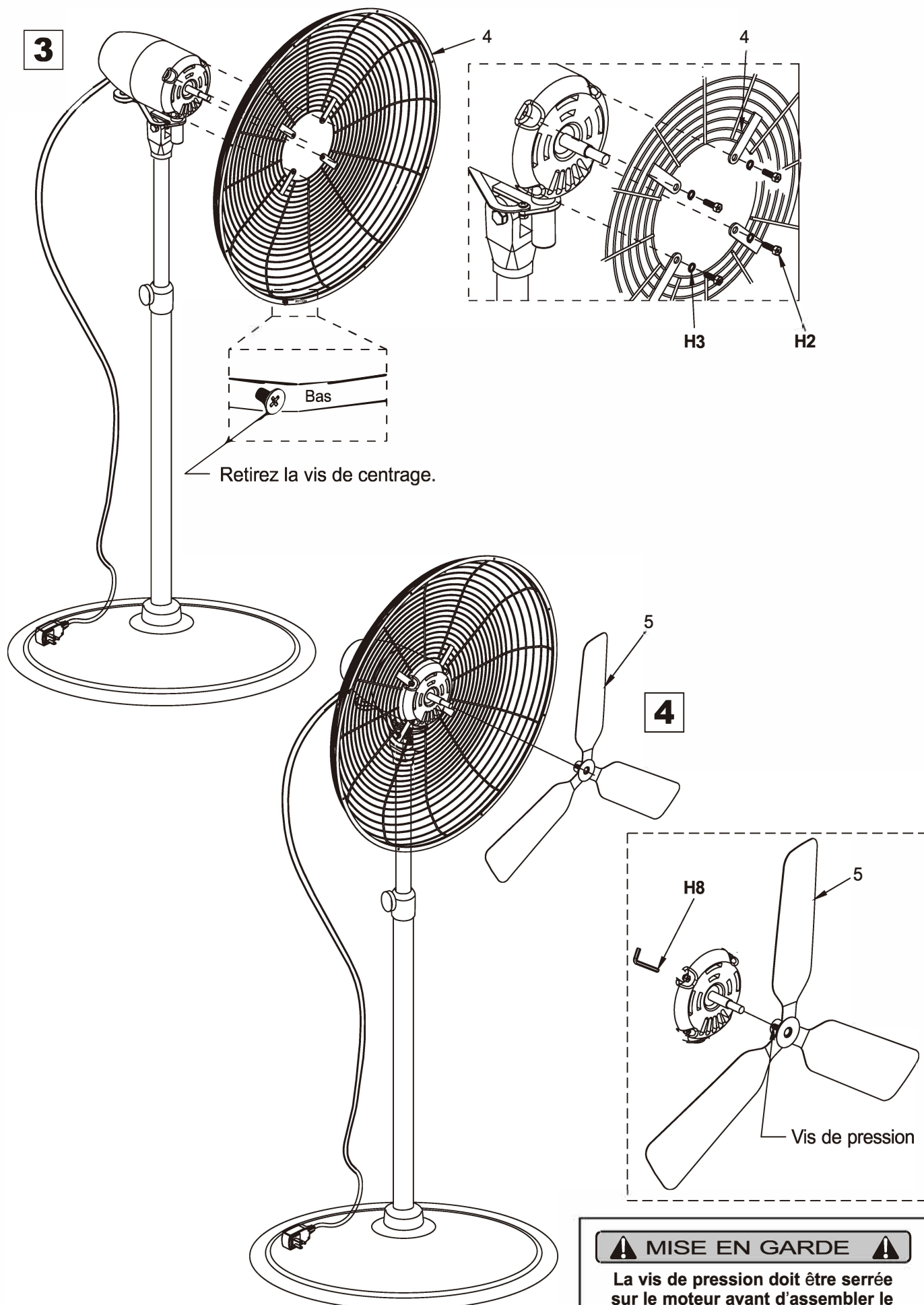
Modèles : 585279 585280

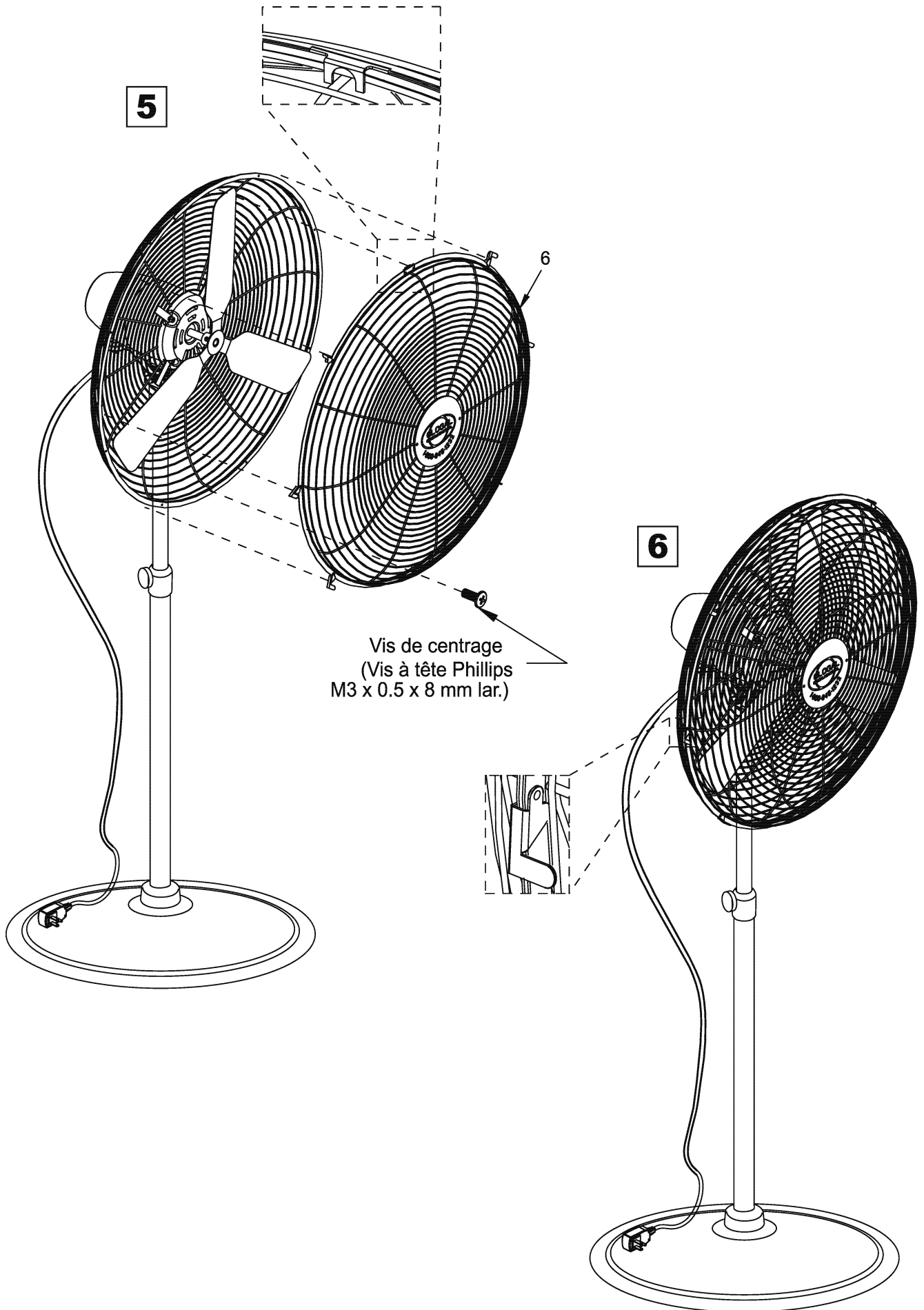


CONTENU		
Réf.	Qté.	Description
1	1	Poteau
2	1	Plaque de base
3	1	Moteur du ventilateur
4	1	Carénage arrière
5	1	Pale de ventilateur
6	1	Recouvrement du carénage
H1	1	Bouton de réglage M6 x 1.0.....
H2	8	Tornillo Hexagonal Lg. M6 x 1.0 x 18mm
H3	8	Rondelle élastique..... Φ6 x1.8mm
H6	2	Rondelle élastique..... Φ10 x2.0mm
H4	4	Écrou hexagonal M6 x 1.0mm ...
H9	1	Écrou hexagonal M10 x 1.5mm...
H5	1	M10 Rondelle
H7	1	Tornillo Hexagonal Lg. M10 x 38 mm
H8	1	Clé Allen 4 mm.....

⚠ MISE EN GARDE ⚠

Assurez-vous que tous les écrous et boulons soient complètement serrés avant d'assembler le moteur du ventilateur.





⚠ MISE EN GARDE ⚠

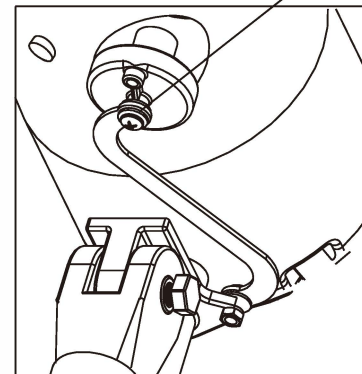
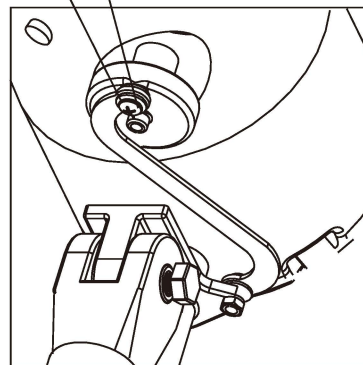
Débranchez avant l'ajustement.

POUR OSCILLER

Vis à épaulement Phillips M6 x 1.0

Osciller

Fixe



7

Boulon de réglage de l'angle

Bouton de réglage de la hauteur

Vis à tête cylindrique
Phillips M5 x 0.8 x 8 mm

Sélecteur de
vitesse

Pince du cordon d'alimentation

Cordon
d'alimentation