

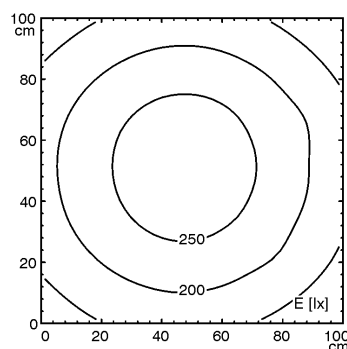
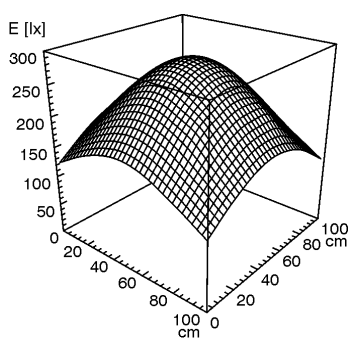
Machine Tube Luminaire



RL70CE- 124 H

connected load	100-280 V; 50/60 Hz
fitted with	1 x compact fluorescent lamp TC-L 24 W neutral white 4000 K
work equipment	electronic ballast
mains lead	direct power supply
luminaire body material	acrylic (PMMA); clear
weight (net)	approx. 1,5 kg
fastening	lamp bracket (accessory)
light distribution	direct
system of protection	IP 67
class of protection	I
total length	495 mm
light output	331 mm
outside diameter	70 mm
article no.	C with screwed cable gland 112913010

E_{min}: 123 lx
E_m: 207 lx
E_{max}: 281 lx



measuring conditions: d=100cm

