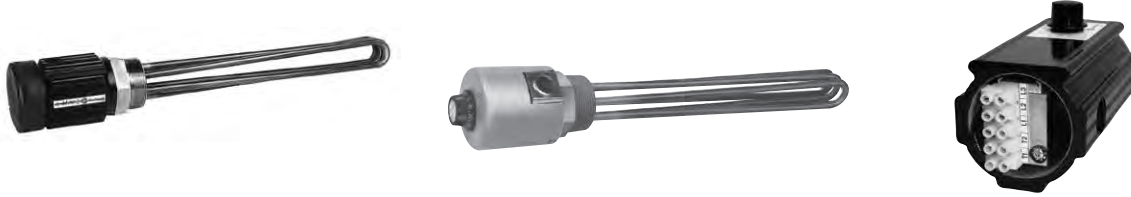


Screwplug Heaters - CX



Application

Screwplug heaters are primarily used to heat liquids in tanks or vessels. To do so safely and reliably requires that the heating elements remain fully immersed in the liquid. Liquids such as water, oils, trichlorethylene, etc. can be heated through natural convection currents created by the immersed elements.

Although electricity costs are generally higher than gas or oil, it can be demonstrated that a Caloritech™ immersion heater is often your best choice. The electric heater provides close to 100% efficiency, is safer and easier to control and is usually cheaper to install.

Terminal Block Simplifies Wiring

All thermostat equipped screwplug heaters with moisture or explosion-proof housings feature a convenient terminal block mounted to a slide out trolley.

This unique Caloritech™ feature simplifies installation and reduces maintenance.

Installation

Listed heaters have standard 1" to 2 1/2" NPT tapered plugs. Any other size or type of plug is available on special order. The heater is installed through a threaded half coupling located in the vessel wall well below the minimum liquid level but spaced sufficiently above the bottom to allow for sludge build-up which should never be allowed to cover any part of the elements.

Horizontal installation is preferred even though heater replacement will require draining of the tank. Vertical installation is sometimes possible but it is best that you contact the factory for advice prior to purchase.

Operation

For an immersion heater to transfer heat it must establish a balance between convection currents and the temperature difference between itself and the liquid. Viscous liquids which retard convection currents are the most difficult to heat. Care must be exercised to ensure that the required rate of heat transfer from the heating elements is achieved without overheating the element and the liquid resulting in coking. This is generally achieved through the selection of heater watt density.

Heaters immersed in liquids, such as water with high calcium and magnesium content, phosphates or eluate solutions, have a tendency to precipitate their solids over the elements on heating. These heaters require scheduled maintenance to remove scale build up which may thermally insulate the elements and reduce their service life.

Selection

Proper selection of the screwplug heater is required to maximize service life. Once the wattage requirement is established decide on heater voltage and phase. Remember that unrealistic heat-up time requirements will increase equipment and operating costs.

The tables list, under "watt density", the required heat transfer rate from the various heaters. Refer to Section D of the Caloritech™ catalog for guidance on the acceptable watt density for your application. If a heater is not listed with the density you require we can fabricate to suit.

Of equal importance is the selection of the materials of construction which will resist corrosion and not wear away or contaminate the liquid. Refer to the corrosion guide in Section D for a list of the standard materials for various solutions. Also see page B26 for discussion on watt density.

The heaters are not guaranteed against corrosion since Thermon Heating Systems has no control over the liquid type, concentration or temperature of the solution. Consult your factory representative or your chemical supplier for recommendation on materials for your solution. Recommendations are not implied guarantees.

Warning - Fire Hazard

The heaters listed in the catalog may occasionally malfunction in normal use and if operated in the presence of explosive or combustible materials may cause fires. Do not operate in the presence of explosive or combustible materials. Observe fire prevention precautions and consult the local sales office or contact Thermon Heating Systems for proper application and installation instructions.

The thermostat controls function as temperature controls. Because they do not fail safe, an approved temperature and/or pressure safety control may be required for safe operation. Inclusion of consumer warnings on assembled products containing these elements and thermostats is recommended.

Heaters with 1" and 1 1/4" Plugs

Application

Type CXC heaters are used primarily for water heating and have brass screwplugs and copper sheaths.

Type CXF are used primarily for oil heating and have steel screwplugs. Low watt density heaters are used in heavier, non-circulated oils. Higher watt density heaters are suitable for light oils or in forced oil circulation loops. Incoloy® elements are silver brazed into a steel screwplug.

Built-in Thermostats

Standard built-in thermostat is a one pole device limited to 240V 25 amp. Whenever the heater voltage exceeds 240V or the heater current exceeds 25 amps or for three phase supply, the thermostat is intended for pilot duty only and is not factory wired to the elements. See Section F of the Caloritech™ catalog for selection of the contactor and control transformer you may require in these instances.

To Order Specify

- Quantity
- Catalog number
- Voltage
- Wattage
- Special features



Table 1 – Screwplug Heaters (One Element) - 1" NPT

	kW	Immersion Length 'B'		Standard Voltages 1 Phase Only	General Purpose Terminal Box		NEMA 4 Terminal Box		Explosion-Proof Terminal Box		Net Weight	
		in	mm		Without Thermostat	With Thermostat 50°F to 250°F (10°C to 120°C)	Without Thermostat	With Thermostat 50°F to 250°F (10°C to 120°C)	Without Thermostat	With Thermostat 50°F to 250°F (10°C to 120°C)	lbs	kg
Copper Sheath Brass Plug 80 W/in ² (12.4 W/cm ²)	0.50	5.5	140	120	CXC105P111	CXCT105P111	CXC105P1R11	CXCT105P1R11	CXC105P1X11	CXCT105P1X11	2.2	1
				208	CXC105P121	CXCT105P121	CXC105P1R21	CXCT105P1R21	CXC105P1X21	CXCT105P1X21		
				240	CXC105P131	CXCT105P131	CXC105P1R31	CXCT105P1R31	CXC105P1X31	CXCT105P1X31		
	0.75	5.5	140	120	CXC107P111	CXCT107P111	CXC107P1R11	CXCT107P1R11	CXC107P1X11	CXCT107P1X11		
				208	CXC107P121	CXCT107P121	CXC107P1R21	CXCT107P1R21	CXC107P1X21	CXCT107P1X21		
				240	CXC107P131	CXCT107P131	CXC107P1R31	CXCT107P1R31	CXC107P1X31	CXCT107P1X31		
	1.00	7.1	180	120	CXC110P111	CXCT110P111	CXC110P1R11	CXCT110P1R11	CXC110P1X11	CXCT110P1X11		
				208	CXC110P121	CXCT110P121	CXC110P1R21	CXCT110P1R21	CXC110P1X21	CXCT110P1X21		
				240	CXC110P131	CXCT110P131	CXC110P1R31	CXCT110P1R31	CXC110P1X31	CXCT110P1X31		
	1.50	10.6	270	120	CXC115P111	CXCT115P111	CXC115P1R11	CXCT115P1R11	CXC115P1X11	CXCT115P1X11		
				208	CXC115P121	CXCT115P121	CXC115P1R21	CXCT115P1R21	CXC115P1X21	CXCT115P1X21		
				240	CXC115P131	CXCT115P131	CXC115P1R31	CXCT115P1R31	CXC115P1X31	CXCT115P1X31		
	2.00	7.5	190	120	CXC120P111	CXCT120P111	CXC120P1R11	CXCT120P1R11	CXC120P1X11	CXCT120P1X11		
				208	CXC120P121	CXCT120P121	CXC120P1R21	CXCT120P1R21	CXC120P1X21	CXCT120P1X21		
				240	CXC120P131	CXCT120P131	CXC120P1R31	CXCT120P1R31	CXC120P1X31	CXCT120P1X31		
	3.00	10.8	275	120	CXC130P111	CXCT130P111	CXC130P1R11	CXCT130P1R11	CXC130P1X11	CXCT130P1X11		
				208	CXC130P121	CXCT130P121	CXC130P1R21	CXCT130P1R21	CXC130P1X21	CXCT130P1X21		
				240	CXC130P131	CXCT130P131	CXC130P1R31	CXCT130P1R31	CXC130P1X31	CXCT130P1X31		
	5.00	16.9	430	120	CXC150P111	CXCT150P111	CXC150P1R11	CXCT150P1R11	CXC150P1X11	CXCT150P1X11		
				208	CXC150P121	CXCT150P121	CXC150P1R21	CXCT150P1R21	CXC150P1X21	CXCT150P1X21		
				240	CXC150P131	CXCT150P131	CXC150P1R31	CXCT150P1R31	CXC150P1X31	CXCT150P1X31		

Table 1 – Screwplug Heaters (One Element) - 1" NPT (Cont'd)

	kW	Immersion Length 'B'		Standard Voltages 1 Phase Only	General Purpose Terminal Box			NEMA 4 Terminal Box		Explosion-Proof Terminal Box		Net Weight		
		in	mm		Without Thermostat	With Thermostat 50°F to 250°F (10°C to 120°C)	Without Thermostat	With Thermostat 50°F to 250°F (10°C to 120°C)	Without Thermostat	With Thermostat 50°F to 250°F (10°C to 120°C)	Without Thermostat	With Thermostat 50°F to 250°F (10°C to 120°C)	lbs	kg
Steel Plug Incoloy® Sheath 23 watts in ² (3.4 watts cm ²)	0.30	7.5	190	120	CXF103P111	CXFT103P111	CXF103P1R11	CXFT103P1R11	CXF103P1X11	CXFT103P1X11	2.2	1		
				208	CXF103P121	CXFT103P121	CXF103P1R21	CXFT103P1R21	CXF103P1X21	CXFT103P1X21				
				240	CXF103P131	CXFT103P131	CXF103P1R31	CXFT103P1R31	CXF103P1X31	CXFT103P1X31				
	0.50	8.9	225	120	CXF105P111	CXFT105P111	CXF105P1R11	CXFT105P1R11	CXF105P1X11	CXFT105P1X11	2.2	1		
				208	CXF105P121	CXFT105P121	CXF105P1R21	CXFT105P1R21	CXF105P1X21	CXFT105P1X21				
				240	CXF105P131	CXFT105P131	CXF105P1R31	CXFT105P1R31	CXF105P1X31	CXFT105P1X31				
	0.70	11	280	120	CXF107P111	CXFT107P111	CXF107P1R11	CXFT107P1R11	CXF107P1X11	CXFT107P1X11	4.4	2		
				208	CXF107P121	CXFT107P121	CXF107P1R21	CXFT107P1R21	CXF107P1X21	CXFT107P1X21				
				240	CXF107P131	CXFT107P131	CXF107P1R31	CXFT107P1R31	CXF107P1X31	CXFT107P1X31				
	0.90	12	305	120	CXF109P111	CXFT109P111	CXF109P1R11	CXFT109P1R11	CXF109P1X11	CXFT109P1X11	4.4	2		
				208	CXF109P121	CXFT109P121	CXF109P1R21	CXFT109P1R21	CXF109P1X21	CXFT109P1X21				
				240	CXF109P131	CXFT109P131	CXF109P1R31	CXFT109P1R31	CXF109P1X31	CXFT109P1X31				
Steel Plug Incoloy® Sheath 15 W/in ² (2.3 W/cm ²)	0.10	5	127	120	CXF101P1511	CXFT101P1511	CXF101P15R11	CXFT101P15R11	CXF101P15X11	CXFT101P15X11	2.2	1		
	0.15	7	178	120	CXF101P1711	CXFT101P1711	CXF101P17R11	CXFT101P17R11	CXF101P17X11	CXFT101P17X11	2.2	1		
	0.20	7.5	229	120	CXF102P111	CXFT102P111	CXF102P1R11	CXFT102P1R11	CXF102P1X11	CXFT102P1X11	2.2	1		
				208	CXF102P121	CXFT102P121	CXF102P1R21	CXFT102P1R21	CXF102P1X21	CXFT102P1X21				
				240	CXF102P131	CXFT102P131	CXF102P1R31	CXFT102P1R31	CXF102P1X31	CXFT102P1X31				
	0.25	10	279	120	CXF102P11011	CXFT102P11011	CXF102P110R11	CXFT102P110R11	CXF102P110X11	CXFT102P110X11	4.4	2		
				208	CXF102P11021	CXFT102P11021	CXF102P110R21	CXFT102P110R21	CXF102P110X21	CXFT102P110X21				
				240	CXF102P11031	CXFT102P11031	CXF102P110R31	CXFT102P110R31	CXF102P110X31	CXFT102P110X31				
	0.40	9.4	239	120	CXF104P111	CXFT104P111	CXF104P1R11	CXFT104P1R11	CXF104P1X11	CXFT104P1X11	4.4	2		
				208	CXF104P121	CXFT104P121	CXF104P1R21	CXFT104P1R21	CXF104P1X21	CXFT104P1X21				
				240	CXF104P131	CXFT104P131	CXF104P1R31	CXFT104P1R31	CXF104P1X31	CXFT104P1X31				
	0.50	10	254	120	CXF105P11011	CXFT105P11011	CXF105P110R11	CXFT105P110R11	CXF105P110X11	CXFT105P110X11	4.4	2		
				208	CXF105P11021	CXFT105P11021	CXF105P110R21	CXFT105P110R21	CXF105P110X21	CXFT105P110X21				
				240	CXF105P11031	CXFT105P11031	CXF105P110R31	CXFT105P110R31	CXF105P110X31	CXFT105P110X31				
	0.60	11	279	120	CXF106P111	CXFT106P111	CXF106P1R11	CXFT106P1R11	CXF106P1X11	CXFT106P1X11	4.4	2		
				208	CXF106P121	CXFT106P121	CXF106P1R21	CXFT106P1R21	CXF106P1X21	CXFT106P1X21				
				240	CXF106P131	CXFT106P131	CXF106P1R31	CXFT106P1R31	CXF106P1X31	CXFT106P1X31				
	0.75	15	381	120	CXF107P11511	CXFT107P11511	CXF107P115R11	CXFT107P115R11	CXF107P115X11	CXFT107P115X11	4.4	2		
				208	CXF107P11521	CXFT107P11521	CXF107P115R21	CXFT107P115R21	CXF107P115X21	CXFT107P115X21				
				240	CXF107P11531	CXFT107P11531	CXF107P115R31	CXFT107P115R31	CXF107P115X31	CXFT107P115X31				
	1.0	19	483	120	CXF110P11911	CXFT110P11911	CXF110P119R11	CXFT110P119R11	CXF110P119X11	CXFT110P119X11	4.4	2		
208				CXF110P11921	CXFT110P11921	CXF110P119R21	CXFT110P119R21	CXF110P119X21	CXFT110P119X21					
240				CXF110P11931	CXFT110P11931	CXF110P119R31	CXFT110P119R31	CXF110P119X31	CXFT110P119X31					

To Order Specify

- Quantity
- Catalog number
- Voltage
- Wattage
- Special features

Table 2 – Screwplug Heaters (Two Elements) - 1 ¼" NPT

	kW	Immersion Length 'B'		Standard Voltages 1 Phase Only	General Purpose Terminal Box		NEMA 4 Terminal Box		Explosion-Proof Terminal Box		Net Weight		
		in	mm		Without Thermostat	With Thermostat 50°F to 250°F (10°C to 120°C)	Without Thermostat	With Thermostat 50°F to 250°F (10°C to 120°C)	Without Thermostat	With Thermostat 50°F to 250°F (10°C to 120°C)	lbs	kg	
Copper Sheath Brass Plug 80 W/in ² (12.4 W/cm ²)	1.5	5.7	145	120	CXC215P1211	CXCT215P1211	CXC215P12R11	CXCT215P12R11	CXC215P12X11	CXCT215P12X11	8.8	4	
				208	CXC215P1221	CXCT215P1221	CXC215P12R21	CXCT215P12R21	CXC215P12X21	CXCT215P12X21			
				240	CXC215P1231	CXCT215P1231	CXC215P12R31	CXCT215P12R31	CXC215P12X31	CXCT215P12X31			
	2.0	7.3	285	120	CXC220P1211	CXCT220P1211	CXC220P12R11	CXCT220P12R11	CXC220P12X11	CXCT220P12X11	8.8	4	
				208	CXC220P1221	CXCT220P1221	CXC220P12R21	CXCT220P12R21	CXC220P12X21	CXCT220P12X21			
				240	CXC220P1231	CXCT220P1231	CXC220P12R31	CXCT220P12R31	CXC220P12X31	CXCT220P12X31			
Incoloy® Sheath Steel Plug 23 W/in ² (3.4 W/cm ²)	1.0	13	330	120	CXF210P121311	CXFT210P121311	CXF210P1213R11	CXFT210P1213R11	CXF210P1213X11	CXFT210P1213X11	8.8	4	
				208	CXF210P121321	CXFT210P121321	CXF210P1213R21	CXFT210P1213R21	CXF210P1213X21	CXFT210P1213X21			
				240	CXF210P121331	CXFT210P121331	CXF210P1213R31	CXFT210P1213R31	CXF210P1213X31	CXFT210P1213X31			
	1.5	18	457	120	CXF215P121811	CXFT215P121811	CXF215P1218R11	CXFT215P1218R11	CXF215P1218X11	CXFT215P1218X11	11	5	
				208	CXF215P121821	CXFT215P121821	CXF215P1218R21	CXFT215P1218R21	CXF215P1218X21	CXFT215P1218X21			
				240	CXF215P121831	CXFT215P121831	CXF215P1218R31	CXFT215P1218R31	CXF215P1218X31	CXFT215P1218X31			
	2.0	24	610	120	CXF220P122411	CXFT220P122411	CXF220P1224R11	CXFT220P1224R11	CXF220P1224X11	CXFT215P1218X11	11	5	
				208	CXF220P122421	CXFT220P122421	CXF220P1224R21	CXFT220P1224R21	CXF220P1224X21	CXFT215P1218X21			
				240	CXF220P122431	CXFT220P122431	CXF220P1224R31	CXFT220P1224R31	CXF220P1224X31	CXFT215P1218X31			
	Incoloy® Sheath Steel Plug 15 W/in ² (2.3 W/cm ²)	0.20	5	127	120	CXF202P12511	CXFT202P12511	CXF202P125R11	CXFT202P125R11	CXF202P125X11	CXFT202P125X11	8.8	4
					208	CXF202P12521	CXFT202P12521	CXF202P125R21	CXFT202P125R21	CXF202P125X21	CXFT202P125X21		
					240	CXF202P12531	CXFT202P12531	CXF202P125R31	CXFT202P125R31	CXF202P125X31	CXFT202P125X31		
0.30		7	178	120	CXF203P12711	CXFT203P12711	CXF203P127R11	CXFT203P127R11	CXF203P127X11	CXFT203P127X11	8.8	4	
				208	CXF203P12721	CXFT203P12721	CXF203P127R21	CXFT203P127R21	CXF203P127X21	CXFT203P127X21			
				240	CXF203P12731	CXFT203P12731	CXF203P127R31	CXFT203P127R31	CXF203P127X31	CXFT203P127X31			
0.40		9	229	120	CXF204P12911	CXFT204P12911	CXF204P129R11	CXFT204P129R11	CXF204P129X11	CXFT204P129X11	8.8	4	
				208	CXF204P12921	CXFT204P12921	CXF204P129R21	CXFT204P129R21	CXF204P129X21	CXFT204P129X21			
				240	CXF204P12931	CXFT204P12931	CXF204P129R31	CXFT204P129R31	CXF204P129X31	CXFT204P129X31			
0.50		11	279	120	CXF205P121111	CXFT205P121111	CXF205P1211R11	CXFT205P1211R11	CXF205P1211X11	CXFT205P1211X11	8.8	4	
				208	CXF205P121121	CXFT205P121121	CXF205P1211R21	CXFT205P1211R21	CXF205P1211X21	CXFT205P1211X21			
				240	CXF205P121131	CXFT205P121131	CXF205P1211R31	CXFT205P1211R31	CXF205P1211X31	CXFT205P1211X31			
0.60		11	279	120	CXF206P1211	CXFT206P1211	CXF206P12R11	CXFT206P12R11	CXF206P12X11	CXFT206P12X11	11	5	
				208	CXF206P1221	CXFT206P1221	CXF206P12R21	CXFT206P12R21	CXF206P12X21	CXFT206P12X21			
				240	CXF206P1231	CXFT206P1231	CXF206P12R31	CXFT206P12R31	CXF206P12X31	CXFT206P12X31			
0.75		15	381	120	CXF207P121511	CXFT207P121511	CXF207P1215R11	CXFT207P1215R11	CXF207P1215X11	CXFT207P1215X11	11	5	
				208	CXF207P121521	CXFT207P121521	CXF207P1215R21	CXFT207P1215R21	CXF207P1215X21	CXFT207P1215X21			
				240	CXF207P121531	CXFT207P121531	CXF207P1215R31	CXFT207P1215R31	CXF207P1215X31	CXFT207P1215X31			
1.0		19	483	120	CXF210P121911	CXFT210P121911	CXF210P1219R11	CXFT210P1219R11	CXF210P1219X11	CXFT210P1219X11	13.2	6	
				208	CXF210P121921	CXFT210P121921	CXF210P1219R21	CXFT210P1219R21	CXF210P1219X21	CXFT210P1219X21			
				240	CXF210P121931	CXFT210P121931	CXF210P1219R31	CXFT210P1219R31	CXF210P1219X31	CXFT210P1219X31			
1.5		27	686	120	CXF215P122711	CXFT215P122711	CXF215P1227R11	CXFT215P1227R11	CXF215P1227X11	CXFT215P1227X11	13.2	6	
				208	CXF215P122721	CXFT215P122721	CXF215P1227R21	CXFT215P1227R21	CXF215P1227X21	CXFT215P1227X21			
				240	CXF215P122731	CXFT215P122731	CXF215P1227R31	CXFT215P1227R31	CXF215P1227X31	CXFT215P1227X31			

Heaters with 2" and 2 1/2" Plugs

Application

Type CXC heaters are used primarily for water heating and have brass screwplugs and copper sheaths.

Type CXF are used primarily for oil heating and have steel screwplugs. Low watt density heaters are used in heavier, non-circulated oils. Higher watt density heaters are suitable for light oils or in forced oil circulation loops. Incoloy® elements are silver brazed into a steel screwplug.

Type CXI heaters are used primarily for heating mildly corrosive solutions and use higher density Incoloy® elements welded into a stainless steel screwplug.

Built-in Thermostats

Standard built-in thermostat is a one pole device limited to 240V 25 amp. Whenever the heater voltage exceeds 240V or the heater current exceeds 25 amps or for three phase supply, the thermostat is intended for pilot duty only and is not factory wired to the elements. See Section F of the Caloritech™ catalog for selection of the contactor and control transformer you may require in these instances.

To Order Specify

- Quantity
- Catalog number
- Voltage
- Wattage
- Special features



Table 3 – Screwplug Heaters (Two Elements) - 2" NPT

	kW	Immersion Length 'B'		Standard Voltages 1 Phase Only	General Purpose Terminal Box		NEMA 4 Terminal Box		Explosion-Proof Terminal Box		Net Weight	
		in	mm		Without Thermostat	With Thermostat 50°F to 250°F (10°C to 120°C)	Without Thermostat	With Thermostat 50°F to 250°F (10°C to 120°C)	Without Thermostat	With Thermostat 50°F to 250°F (10°C to 120°C)	lbs	kg
Copper Sheath Brass Plug 54 to 60 W/in ² (8.3 to 9.3 W/cm ²)	1.5	7.9	201	120	CXC215P211	CXCT215P211	CXC215P2R11	CXCT215P2R11	CXC215P2X11	CXCT215P2X11	8.8	4
				208	CXC215P221	CXCT215P221	CXC215P2R21	CXCT215P2R21	CXC215P2X21	CXCT215P2X21		
				240	CXC215P231	CXCT215P231	CXC215P2R31	CXCT215P2R31	CXC215P2X31	CXCT215P2X31		
				480	CXC215P271	CXCT215P271	CXC215P2R71	CXCT215P2R71	CXC215P2X71	CXCT215P2X71		
				600	CXC215P281	CXCT215P281	CXC215P2R81	CXCT215P2R81	CXC215P2X81	CXCT215P2X81		
	2.0	7.9	201	120	CXC220P211	CXCT220P211	CXC220P2R11	CXCT220P2R11	CXC220P2X11	CXCT220P2X11	8.8	4
				208	CXC220P221	CXCT220P221	CXC220P2R21	CXCT220P2R21	CXC220P2X21	CXCT220P2X21		
				240	CXC220P231	CXCT220P231	CXC220P2R31	CXCT220P2R31	CXC220P2X31	CXCT220P2X31		
				480	CXC220P271	CXCT220P271	CXC220P2R71	CXCT220P2R71	CXC220P2X71	CXCT220P2X71		
				600	CXC220P281	CXCT220P281	CXC220P2R81	CXCT220P2R81	CXC220P2X81	CXCT220P2X81		
	3.0	11.8	300	120	CXC230P211	CXCT230P211	CXC230P2R11	CXCT230P2R11	CXC230P2X11	CXCT230P2X11	11	5
				208	CXC230P221	CXCT230P221	CXC230P2R21	CXCT230P2R21	CXC230P2X21	CXCT230P2X21		
				240	CXC230P231	CXCT230P231	CXC230P2R31	CXCT230P2R31	CXC230P2X31	CXCT230P2X31		
				480	CXC230P271	CXCT230P271	CXC230P2R71	CXCT230P2R71	CXC230P2X71	CXCT230P2X71		
				600	CXC230P281	CXCT230P281	CXC230P2R81	CXCT230P2R81	CXC230P2X81	CXCT230P2X81		

Table 3 – Screwplug Heaters (Two Elements) - 2" NPT (Cont'd)

	kW	Immersion Length 'B'		Standard Voltages 1 Phase Only	General Purpose Terminal Box			NEMA 4 Terminal Box		Explosion-Proof Terminal Box		Net Weight	
		in	mm		Without Thermostat	With Thermostat 50°F to 250°F (10°C to 120°C)	Without Thermostat	With Thermostat 50°F to 250°F (10°C to 120°C)	Without Thermostat	With Thermostat 50°F to 250°F (10°C to 120°C)	lbs	kg	
Copper Sheath Brass Plug 54 to 60 W/in ² (8.3 to 9.3 W/cm ²)	4.0	17.7	450	208	CXC240P221	CXCT240P221	CXC240P2R21	CXCT240P2R21	CXC240P2X21	CXCT240P2X21	11	5	
				240	CXC240P231	CXCT240P231	CXC240P2R31	CXCT240P2R31	CXC240P2X31	CXCT240P2X31			
				480	CXC240P271	CXCT240P271	CXC240P2R71	CXCT240P2R71	CXC240P2X71	CXCT240P2X71			
				600	CXC240P281	CXCT240P281	CXC240P2R81	CXCT240P2R81	CXC240P2X81	CXCT240P2X81			
	5.0	21.7	551	208	CXC250P221	CXCT250P221	CXC250P2R21	CXCT250P2R21	CXC250P2X21	CXCT250P2X21	11	5	
				240	CXC250P231	CXCT250P231	CXC250P2R31	CXCT250P2R31	CXC250P2X31	CXCT250P2X31			
				480	CXC250P271	CXCT250P271	CXC250P2R71	CXCT250P2R71	CXC250P2X71	CXCT250P2X71			
				600	CXC250P281	CXCT250P281	CXC250P2R81	CXCT250P2R81	CXC250P2X81	CXCT250P2X81			
	6.0	25.6	650	208	CXC260P221	CXCT260P221	CXC260P2R21	CXCT260P2R21	CXC260P2X21	CXCT260P2X21	13.2	6	
				240	CXC260P231	CXCT260P231	CXC260P2R31	CXCT260P2R31	CXC260P2X31	CXCT260P2X31			
				480	CXC260P271	CXCT260P271	CXC260P2R71	CXCT260P2R71	CXC260P2X71	CXCT260P2X71			
				600	CXC260P281	CXCT260P281	CXC260P2R81	CXCT260P2R81	CXC260P2X81	CXCT260P2X81			
	8.0	32.5	826	208	CXC280P221	CXCT280P221	CXC280P2R21	CXCT280P2R21	CXC280P2X21	CXCT280P2X21	13.2	6	
				240	CXC280P231	CXCT280P231	CXC280P2R31	CXCT280P2R31	CXC280P2X31	CXCT280P2X31			
				480	CXC280P271	CXCT280P271	CXC280P2R71	CXCT280P2R71	CXC280P2X71	CXCT280P2X71			
				600	CXC280P281	CXCT280P281	CXC280P2R81	CXCT280P2R81	CXC280P2X81	CXCT280P2X81			
	10.0	39.4	1001	208	CXC2100P221	CXCT2100P221	CXC2100P2R21	CXCT2100P2R21	CXC2100P2X21	CXCT2100P2X21	15.4	7	
				240	CXC2100P231	CXCT2100P231	CXC2100P2R31	CXCT2100P2R31	CXC2100P2X31	CXCT2100P2X31			
				480	CXC2100P271	CXCT2100P271	CXC2100P2R71	CXCT2100P2R71	CXC2100P2X71	CXCT2100P2X71			
				600	CXC2100P281	CXCT2100P281	CXC2100P2R81	CXCT2100P2R81	CXC2100P2X81	CXCT2100P2X81			
12.0	47.2	1199	208	CXC2120P221	CXCT2120P221	CXC2120P2R21	CXCT2120P2R21	CXC2120P2X21	CXCT2120P2X21	15.4	7		
			240	CXC2120P231	CXCT2120P231	CXC2120P2R31	CXCT2120P2R31	CXC2120P2X31	CXCT2120P2X31				
			480	CXC2120P271	CXCT2120P271	CXC2120P2R71	CXCT2120P2R71	CXC2120P2X71	CXCT2120P2X71				
			600	CXC2120P281	CXCT2120P281	CXC2120P2R81	CXCT2120P2R81	CXC2120P2X81	CXCT2120P2X81				
Incoloy® Sheath Stainless Plug 54 to 60 W/in ² (8.3 to 9.3 W/cm ²)	1.5	7.9	201	120	CXI215P211	CXIT215P211	CXI215P2R11	CXIT215P2R11	CXI215P2X11	CXIT215P2X11	8.8	4	
				208	CXI215P221	CXIT215P221	CXI215P2R21	CXIT215P2R21	CXI215P2X21	CXIT215P2X21			
				240	CXI215P231	CXIT215P231	CXI215P2R31	CXIT215P2R31	CXI215P2X31	CXIT215P2X31			
				480	CXI215P271	CXIT215P271	CXI215P2R71	CXIT215P2R71	CXI215P2X71	CXIT215P2X71			
				600	CXI215P281	CXIT215P281	CXI215P2R81	CXIT215P2R81	CXI215P2X81	CXIT215P2X81			
	2.0	7.9	201	120	CXI220P211	CXIT220P211	CXI220P2R11	CXIT220P2R11	CXI220P2X11	CXIT220P2X11	8.8	4	
				208	CXI220P221	CXIT220P221	CXI220P2R21	CXIT220P2R21	CXI220P2X21	CXIT220P2X21			
				240	CXI220P231	CXIT220P231	CXI220P2R31	CXIT220P2R31	CXI220P2X31	CXIT220P2X31			
				480	CXI220P271	CXIT220P271	CXI220P2R71	CXIT220P2R71	CXI220P2X71	CXIT220P2X71			
				600	CXI220P281	CXIT220P281	CXI220P2R81	CXIT220P2R81	CXI220P2X81	CXIT220P2X81			
	3.0	11.8	300	120	CXI230P211	CXIT230P211	CXI230P2R11	CXIT230P2R11	CXI230P2X11	CXIT230P2X11	11	5	
				208	CXI230P221	CXIT230P221	CXI230P2R21	CXIT230P2R21	CXI230P2X21	CXIT230P2X21			
				240	CXI230P231	CXIT230P231	CXI230P2R31	CXIT230P2R31	CXI230P2X31	CXIT230P2X31			
				480	CXI230P271	CXIT230P271	CXI230P2R71	CXIT230P2R71	CXI230P2X71	CXIT230P2X71			
				600	CXI230P281	CXIT230P281	CXI230P2R81	CXIT230P2R81	CXI230P2X81	CXIT230P2X81			
	4.0	17.7	450	208	CXI240P221	CXIT240P221	CXI240P2R21	CXIT240P2R21	CXI240P2X21	CXIT240P2X21	11	5	
				240	CXI240P231	CXIT240P231	CXI240P2R31	CXIT240P2R31	CXI240P2X31	CXIT240P2X31			
				480	CXI240P271	CXIT240P271	CXI240P2R71	CXIT240P2R71	CXI240P2X71	CXIT240P2X71			
				600	CXI240P281	CXIT240P281	CXI240P2R81	CXIT240P2R81	CXI240P2X81	CXIT240P2X81			
	5.0	21.7	551	208	CXI250P221	CXIT250P221	CXI250P2R21	CXIT250P2R21	CXI250P2X21	CXIT250P2X21	13.2	6	
240				CXI250P231	CXIT250P231	CXI250P2R31	CXIT250P2R31	CXI250P2X31	CXIT250P2X31				
480				CXI250P271	CXIT250P271	CXI250P2R71	CXIT250P2R71	CXI250P2X71	CXIT250P2X71				
600				CXI250P281	CXIT250P281	CXI250P2R81	CXIT250P2R81	CXI250P2X81	CXIT250P2X81				

Table 3 – Screwplug Heaters (Two Elements) - 2" NPT (Cont'd)

	kW	Immersion Length 'B'		Standard Voltages 1 Phase Only	General Purpose Terminal Box		NEMA 4 Terminal Box		Explosion-Proof Terminal Box		Net Weight	
		in	mm		Without Thermostat	With Thermostat 50°F to 250°F (10°C to 120°C)	Without Thermostat	With Thermostat 50°F to 250°F (10°C to 120°C)	Without Thermostat	With Thermostat 50°F to 250°F (10°C to 120°C)	lbs	kg
Incoloy® Sheath Stainless Plug 54 to 60 W/in ² (8.3 to 9.3 W/cm ²)	6.0	25.6	650	208	CXI260P221	CXIT260P221	CXI260P2R21	CXIT260P2R21	CXI260P2X21	CXIT260P2X21	13.2	6
				240	CXI260P231	CXIT260P231	CXI260P2R31	CXIT260P2R31	CXI260P2X31	CXIT260P2X31		
				480	CXI260P271	CXIT260P271	CXI260P2R71	CXIT260P2R71	CXI260P2X71	CXIT260P2X71		
				600	CXI260P281	CXIT260P281	CXI260P2R81	CXIT260P2R81	CXI260P2X81	CXIT260P2X81		
	8.0	32.5	826	208	CXI280P221	CXIT280P221	CXI280P2R21	CXIT280P2R21	CXI280P2X21	CXIT280P2X21	13.2	6
				240	CXI280P231	CXIT280P231	CXI280P2R31	CXIT280P2R31	CXI280P2X31	CXIT280P2X31		
				480	CXI280P271	CXIT280P271	CXI280P2R71	CXIT280P2R71	CXI280P2X71	CXIT280P2X71		
	10.0	39.4	1001	208	CXI2100P221	CXIT2100P221	CXI2100P2R21	CXIT2100P2R21	CXI2100P2X21	CXIT2100P2X21	15.4	7
				240	CXI2100P231	CXIT2100P231	CXI2100P2R31	CXIT2100P2R31	CXI2100P2X31	CXIT2100P2X31		
				480	CXI2100P271	CXIT2100P271	CXI2100P2R71	CXIT2100P2R71	CXI2100P2X71	CXIT2100P2X71		
				600	CXI2100P281	CXIT2100P281	CXI2100P2R81	CXIT2100P2R81	CXI2100P2X81	CXIT2100P2X81		
	12.0	47.2	1199	208	CXI2120P221	CXIT2120P221	CXI2120P2R21	CXIT2120P2R21	CXI2120P2X21	CXIT2120P2X21	15.4	7
				240	CXI2120P231	CXIT2120P231	CXI2120P2R31	CXIT2120P2R31	CXI2120P2X31	CXIT2120P2X31		
				480	CXI2120P271	CXIT2120P271	CXI2120P2R71	CXIT2120P2R71	CXI2120P2X71	CXIT2120P2X71		
				600	CXI2120P281	CXIT2120P281	CXI2120P2R81	CXIT2120P2R81	CXI2120P2X81	CXIT2120P2X81		
	Incoloy® Sheath Steel Plug 23 W/in ² (3.6 W/cm ²)	1.5	14	356	120	CXF215P21411	CXFT215P21411	CXF215P214R11	CXFT215P214R11	CXF215P214X11	CXFT215P214X11	11
208					CXF215P21421	CXFT215P21421	CXF215P214R21	CXFT215P214R21	CXF215P214X21	CXFT215P214X21		
240					CXF215P21431	CXFT215P21431	CXF215P214R31	CXFT215P214R31	CXF215P214X31	CXFT215P214X31		
480					CXF215P21471	CXFT215P21471	CXF215P214R71	CXFT215P214R71	CXF215P214X71	CXFT215P214X71		
600					CXF215P21481	CXFT215P21481	CXF215P214R81	CXFT215P214R81	CXF215P214X81	CXFT215P214X81		
2.0		18	457	120	CXF220P21811	CXFT220P21811	CXF220P218R11	CXFT220P218R11	CXF220P218X11	CXFT220P218X11	11	5
				208	CXF220P21821	CXFT220P21821	CXF220P218R21	CXFT220P218R21	CXF220P218X21	CXFT220P218X21		
				240	CXF220P21831	CXFT220P21831	CXF220P218R31	CXFT220P218R31	CXF220P218X31	CXFT220P218X31		
				480	CXF220P21871	CXFT220P21871	CXF220P218R71	CXFT220P218R71	CXF220P218X71	CXFT220P218X71		
				600	CXF220P21881	CXFT220P21881	CXF220P218R81	CXFT220P218R81	CXF220P218X81	CXFT220P218X81		
3.0		26	660	120	CXF230P22611	CXFT230P22611	CXF230P226R11	CXFT230P226R11	CXF230P226X11	CXFT230P226X11	13.2	6
				208	CXF230P22621	CXFT230P22621	CXF230P226R21	CXFT230P226R21	CXF230P226X21	CXFT230P226X21		
				240	CXF230P22631	CXFT230P22631	CXF230P226R31	CXFT230P226R31	CXF230P226X31	CXFT230P226X31		
				480	CXF230P22671	CXFT230P22671	CXF230P226R71	CXFT230P226R71	CXF230P226X71	CXFT230P226X71		
				600	CXF230P22681	CXFT230P22681	CXF230P226R81	CXFT230P226R81	CXF230P226X81	CXFT230P226X81		
4.0		34	864	208	CXF240P23421	CXFT240P23421	CXF240P234R21	CXFT240P234R21	CXF240P234X21	CXFT240P234X21	13.2	6
				240	CXF240P23431	CXFT240P23431	CXF240P234R31	CXFT240P234R31	CXF240P234X31	CXFT240P234X31		
				480	CXF240P23471	CXFT240P23471	CXF240P234R71	CXFT240P234R71	CXF240P234X71	CXFT240P234X71		
				600	CXF240P23481	CXFT240P23481	CXF240P234R81	CXFT240P234R81	CXF240P234X81	CXFT240P234X81		
5.0		42	1067	208	CXF250P24221	CXFT250P24221	CXF250P242R21	CXFT250P242R21	CXF250P242X21	CXFT250P242X21	15.4	7
				240	CXF250P24231	CXFT250P24231	CXF250P242R31	CXFT250P242R31	CXF250P242X31	CXFT250P242X31		
				480	CXF250P24271	CXFT250P24271	CXF250P242R71	CXFT250P242R71	CXF250P242X71	CXFT250P242X71		
				600	CXF250P24281	CXFT250P24281	CXF250P242R81	CXFT250P242R81	CXF250P242X81	CXFT250P242X81		
6.0		50	1270	208	CXF260P25021	CXFT260P25021	CXF260P250R21	CXFT260P250R21	CXF260P250X21	CXFT260P250X21	15.4	7
	240			CXF260P25031	CXFT260P25031	CXF260P250R31	CXFT260P250R31	CXF260P250X31	CXFT260P250X31			
	480			CXF260P25071	CXFT260P25071	CXF260P250R71	CXFT260P250R71	CXF260P250X71	CXFT260P250X71			
	600			CXF260P25081	CXFT260P25081	CXF260P250R81	CXFT260P250R81	CXF260P250X81	CXFT260P250X81			

Table 3 – Screwplug Heaters (Two Elements) - 2" NPT (Cont'd)

	kW	Immersion Length 'B'		Standard Voltages 1 Phase Only	General Purpose Terminal Box			NEMA 4 Terminal Box		Explosion-Proof Terminal Box		Net Weight	
		in	mm		Without Thermostat	With Thermostat 50°F to 250°F (10°C to 120°C)	Without Thermostat	With Thermostat 50°F to 250°F (10°C to 120°C)	Without Thermostat	With Thermostat 50°F to 250°F (10°C to 120°C)	lbs	kg	
Incoloy® Sheath Stainless Steel Plug 23 W/in ² (3.6 W/cm ²)	1.5	14	356	120	CXI215P21411	CXIT215P21411	CXI215P214R11	CXIT215P214R11	CXI215P214X11	CXIT215P214X11	11	5	
				208	CXI215P21421	CXIT215P21421	CXI215P214R21	CXIT215P214R21	CXI215P214X21	CXIT215P214X21			
				240	CXI215P21431	CXIT215P21431	CXI215P214R31	CXIT215P214R31	CXI215P214X31	CXIT215P214X31			
				480	CXI215P21471	CXIT215P21471	CXI215P214R71	CXIT215P214R71	CXI215P214X71	CXIT215P214X71			
				600	CXI215P21481	CXIT215P21481	CXI215P214R81	CXIT215P214R81	CXI215P214X81	CXIT215P214X81			
	2.0	18	457	120	CXI220P21811	CXIT220P21811	CXI220P218R11	CXIT220P218R11	CXI220P218X11	CXIT220P218X11	11	5	
				208	CXI220P21821	CXIT220P21821	CXI220P218R21	CXIT220P218R21	CXI220P218X21	CXIT220P218X21			
				240	CXI220P21831	CXIT220P21831	CXI220P218R31	CXIT220P218R31	CXI220P218X31	CXIT220P218X31			
				480	CXI220P21871	CXIT220P21871	CXI220P218R71	CXIT220P218R71	CXI220P218X71	CXIT220P218X71			
				600	CXI220P21881	CXIT220P21881	CXI220P218R81	CXIT220P218R81	CXI220P218X81	CXIT220P218X81			
	3.0	26	660	120	CXI230P22611	CXIT230P22611	CXI230P226R11	CXIT230P226R11	CXI230P226X11	CXIT230P226X11	13.2	6	
				208	CXI230P22621	CXIT230P22621	CXI230P226R21	CXIT230P226R21	CXI230P226X21	CXIT230P226X21			
				240	CXI230P22631	CXIT230P22631	CXI230P226R31	CXIT230P226R31	CXI230P226X31	CXIT230P226X31			
				480	CXI230P22671	CXIT230P22671	CXI230P226R71	CXIT230P226R71	CXI230P226X71	CXIT230P226X71			
				600	CXI230P22681	CXIT230P22681	CXI230P226R81	CXIT230P226R81	CXI230P226X81	CXIT230P226X81			
	4.0	34	864	208	CXI240P23421	CXIT240P23421	CXI240P234R21	CXIT240P234R21	CXI240P234X21	CXIT240P234X21	13.2	6	
				240	CXI240P23431	CXIT240P23431	CXI240P234R31	CXIT240P234R31	CXI240P234X31	CXIT240P234X31			
				480	CXI240P23471	CXIT240P23471	CXI240P234R71	CXIT240P234R71	CXI240P234X71	CXIT240P234X71			
				600	CXI240P23481	CXIT240P23481	CXI240P234R81	CXIT240P234R81	CXI240P234X81	CXIT240P234X81			
5.0	42	1067	208	CXI250P24221	CXIT250P24221	CXI250P242R21	CXIT250P242R21	CXI250P242X21	CXIT250P242X21	15.4	7		
			240	CXI250P24231	CXIT250P24231	CXI250P242R31	CXIT250P242R31	CXI250P242X31	CXIT250P242X31				
			480	CXI250P24271	CXIT250P24271	CXI250P242R71	CXIT250P242R71	CXI250P242X71	CXIT250P242X71				
			600	CXI250P24281	CXIT250P24281	CXI250P242R81	CXIT250P242R81	CXI250P242X81	CXIT250P242X81				
6.0	50	1270	208	CXI260P25021	CXIT260P25021	CXI260P250R21	CXIT260P250R21	CXI260P250X21	CXIT260P250X21	15.4	7		
			240	CXI260P25031	CXIT260P25031	CXI260P250R31	CXIT260P250R31	CXI260P250X31	CXIT260P250X31				
			480	CXI260P25071	CXIT260P25071	CXI260P250R71	CXIT260P250R71	CXI260P250X71	CXIT260P250X71				
			600	CXI260P25081	CXIT260P25081	CXI260P250R81	CXIT260P250R81	CXI260P250X81	CXIT260P250X81				
Incoloy® Sheath Steel Plug 15 W/in ² (2.3 W/cm ²)	1.0	17.7	450	120	CXF210P211	CXFT210P211	CXF210P2R11	CXFT210P2R11	CXF210P2X11	CXFT210P2X11	11	5	
				208	CXF210P221	CXFT210P221	CXF210P2R21	CXFT210P2R21	CXF210P2X21	CXFT210P2X21			
				240	CXF210P231	CXFT210P231	CXF210P2R31	CXFT210P2R31	CXF210P2X31	CXFT210P2X31			
				480	CXF210P271	CXFT210P271	CXF210P2R71	CXFT210P2R71	CXF210P2X71	CXFT210P2X71			
				600	CXF210P281	CXFT210P281	CXF210P2R81	CXFT210P2R81	CXF210P2X81	CXFT210P2X81			
	1.5	25.6	650	120	CXF215P22511	CXFT215P22511	CXF215P225R11	CXFT215P225R11	CXF215P225X11	CXFT215P225X11	11	5	
				208	CXF215P22521	CXFT215P22521	CXF215P225R21	CXFT215P225R21	CXF215P225X21	CXFT215P225X21			
				240	CXF215P22531	CXFT215P22531	CXF215P225R31	CXFT215P225R31	CXF215P225X31	CXFT215P225X31			
				480	CXF215P22571	CXFT215P22571	CXF215P225R71	CXFT215P225R71	CXF215P225X71	CXFT215P225X71			
				600	CXF215P22581	CXFT215P22581	CXF215P225R81	CXFT215P225R81	CXF215P225X81	CXFT215P225X81			
	2.0	32.5	826	120	CXF220P23211	CXFT220P23211	CXF220P232R11	CXFT220P232R11	CXF220P232X11	CXFT220P232X11	11	5	
				208	CXF220P23221	CXFT220P23221	CXF220P232R21	CXFT220P232R21	CXF220P232X21	CXFT220P232X21			
				240	CXF220P23231	CXFT220P23231	CXF220P232R31	CXFT220P232R31	CXF220P232X31	CXFT220P232X31			
				480	CXF220P23271	CXFT220P23271	CXF220P232R71	CXFT220P232R71	CXF220P232X71	CXFT220P232X71			
				600	CXF220P23281	CXFT220P23281	CXF220P232R81	CXFT220P232R81	CXF220P232X81	CXFT220P232X81			
	3.0	39.4	1001	120	CXF230P23911	CXFT230P23911	CXF230P239R11	CXFT230P239R11	CXF230P239X11	CXFT230P239X11	13.2	6	
				208	CXF230P23921	CXFT230P23921	CXF230P239R21	CXFT230P239R21	CXF230P239X21	CXFT230P239X21			
				240	CXF230P23931	CXFT230P23931	CXF230P239R31	CXFT230P239R31	CXF230P239X31	CXFT230P239X31			
				480	CXF230P23971	CXFT230P23971	CXF230P239R71	CXFT230P239R71	CXF230P239X71	CXFT230P239X71			
				600	CXF230P23981	CXFT230P23981	CXF230P239R81	CXFT230P239R81	CXF230P239X81	CXFT230P239X81			

Table 3 – Screwplug Heaters (Two Elements) - 2" NPT (Cont'd)

	kW	Immersion Length 'B'		Standard Voltages 1 Phase Only	General Purpose Terminal Box		NEMA 4 Terminal Box		Explosion-Proof Terminal Box		Net Weight	
		in	mm		Without Thermostat	With Thermostat 50°F to 250°F (10°C to 120°C)	Without Thermostat	With Thermostat 50°F to 250°F (10°C to 120°C)	Without Thermostat	With Thermostat 50°F to 250°F (10°C to 120°C)	lbs	kg
Incoloy® Sheath Stainless Plug 15 W/in ² (2.3 W/cm ²)	1.0	17.7	450	120	CXI210P211	CXIT210P211	CXI210P2R11	CXIT210P2R11	CXI210P2X11	CXIT210P2X11	8.8	4
				208	CXI210P221	CXIT210P221	CXI210P2R21	CXIT210P2R21	CXI210P2X21	CXIT210P2X21		
				240	CXI210P231	CXIT210P231	CXI210P2R31	CXIT210P2R31	CXI210P2X31	CXIT210P2X31		
				480	CXI210P271	CXIT210P271	CXI210P2R71	CXIT210P2R71	CXI210P2X71	CXIT210P2X71		
				600	CXI210P281	CXIT210P281	CXI210P2R81	CXIT210P2R81	CXI210P2X81	CXIT210P2X81		
	1.5	25.6	650	120	CXI215P22511	CXIT215P22511	CXI215P225R11	CXIT215P225R11	CXI215P225X11	CXIT215P225X11	8.8	4
				208	CXI215P22521	CXIT215P22521	CXI215P225R21	CXIT215P225R21	CXI215P225X21	CXIT215P225X21		
				240	CXI215P22531	CXIT215P22531	CXI215P225R31	CXIT215P225R31	CXI215P225X31	CXIT215P225X31		
				480	CXI215P22571	CXIT215P22571	CXI215P225R71	CXIT215P225R71	CXI215P225X71	CXIT215P225X71		
				600	CXI215P22581	CXIT215P22581	CXI215P225R81	CXIT215P225R81	CXI215P225X81	CXIT215P225X81		
	2.0	32.5	826	120	CXI220P23211	CXIT220P23211	CXI220P232R11	CXIT220P232R11	CXI220P232X11	CXIT220P232X11	8.8	4
				208	CXI220P23221	CXIT220P23221	CXI220P232R21	CXIT220P232R21	CXI220P232X21	CXIT220P232X21		
				240	CXI220P23231	CXIT220P23231	CXI220P232R31	CXIT220P232R31	CXI220P232X31	CXIT220P232X31		
				480	CXI220P23271	CXIT220P23271	CXI220P232R71	CXIT220P232R71	CXI220P232X71	CXIT220P232X71		
				600	CXI220P23281	CXIT220P23281	CXI220P232R81	CXIT220P232R81	CXI220P232X81	CXIT220P232X81		
	3.0	39.4	1001	120	CXI230P23911	CXIT230P23911	CXI230P239R11	CXIT230P239R11	CXI230P239X11	CXIT230P239X11	8.8	4
				208	CXI230P23921	CXIT230P23921	CXI230P239R21	CXIT230P239R21	CXI230P239X21	CXIT230P239X21		
				240	CXI230P23931	CXIT230P23931	CXI230P239R31	CXIT230P239R31	CXI230P239X31	CXIT230P239X31		
				480	CXI230P23971	CXIT230P23971	CXI230P239R71	CXIT230P239R71	CXI230P239X71	CXIT230P239X71		
				600	CXI230P23981	CXIT230P23981	CXI230P239R81	CXIT230P239R81	CXI230P239X81	CXIT230P239X81		

Table 4 – Screwplug Heaters (Three Element) - 2" NPT

	kW	Immersion Length 'B'		Phase	Standard Voltage	General Purpose Terminal Box		NEMA 4 Terminal Box		Explosion-Proof Terminal Box		Net Weight	
		in	mm			Without Thermostat	With Thermostat 50°F to 250°F (10°C to 120°C)	Without Thermostat	With Thermostat 50°F to 250°F (10°C to 120°C)	Without Thermostat	With Thermostat 50°F to 250°F (10°C to 120°C)	lbs	kg
Copper Sheath Brass Plug 54 to 60 W/in ² (8.3 to 8.9 W/cm ²)	3.0	7.9	201	1	120	CXC330P211	CXCT330P211	CXC330P2R11	CXCT330P2R11	CXC330P2X11	CXCT330P2X11	11	5
				1	208	CXC330P221	CXCT330P221	CXC330P2R21	CXCT330P2R21	CXC330P2X21	CXCT330P2X21		
				3	208	CXC330P223	CXCT330P223	CXC330P2R23	CXCT330P2R23	CXC330P2X23	CXCT330P2X23		
				1	240	CXC330P231	CXCT330P231	CXC330P2R31	CXCT330P2R31	CXC330P2X31	CXCT330P2X31		
				1	480	CXC330P271	CXCT330P271	CXC330P2R71	CXCT330P2R71	CXC330P2X71	CXCT330P2X71		
				3	480	CXC330P273	CXCT330P273	CXC330P2R73	CXCT330P2R73	CXC330P2X73	CXCT330P2X73		
				1	600	CXC330P281	CXCT330P281	CXC330P2R81	CXCT330P2R81	CXC330P2X81	CXCT330P2X81		
				3	600	CXC330P283	CXCT330P283	CXC330P2R83	CXCT330P2R83	CXC330P2X83	CXCT330P2X83		
	4.5	11.8	300	1	208	CXC345P221	CXCT345P221	CXC345P2R21	CXCT345P2R21	CXC345P2X21	CXCT345P2X21	13.2	6
				3	208	CXC345P223	CXCT345P223	CXC345P2R23	CXCT345P2R23	CXC345P2X23	CXCT345P2X23		
				1	240	CXC345P231	CXCT345P231	CXC345P2R31	CXCT345P2R31	CXC345P2X31	CXCT345P2X31		
				1	480	CXC345P271	CXCT345P271	CXC345P2R71	CXCT345P2R71	CXC345P2X71	CXCT345P2X71		
				3	480	CXC345P273	CXCT345P273	CXC345P2R73	CXCT345P2R73	CXC345P2X73	CXCT345P2X73		
				1	600	CXC345P281	CXCT345P281	CXC345P2R81	CXCT345P2R81	CXC345P2X81	CXCT345P2X81		
				3	600	CXC345P283	CXCT345P283	CXC345P2R83	CXCT345P2R83	CXC345P2X83	CXCT345P2X83		
				6.0	17.7	450	1	208	CXC360P221	CXCT360P221	CXC360P2R21		
	3	208	CXC360P223				CXCT360P223	CXC360P2R23	CXCT360P2R23	CXC360P2X23	CXCT360P2X23		
	1	240	CXC360P231				CXCT360P231	CXC360P2R31	CXCT360P2R31	CXC360P2X31	CXCT360P2X31		
	1	480	CXC360P271				CXCT360P271	CXC360P2R71	CXCT360P2R71	CXC360P2X71	CXCT360P2X71		
	3	480	CXC360P273				CXCT360P273	CXC360P2R73	CXCT360P2R73	CXC360P2X73	CXCT360P2X73		
1	600	CXC360P281	CXCT360P281				CXC360P2R81	CXCT360P2R81	CXC360P2X81	CXCT360P2X81			
3	600	CXC360P283	CXCT360P283				CXC360P2R83	CXCT360P2R83	CXC360P2X83	CXCT360P2X83			

Table 4 – Screwplug Heaters (Three Element) - 2" NPT (Cont'd)

	kW	Immersion Length 'B'		Phase	Standard Voltage	General Purpose Terminal Box		NEMA 4 Terminal Box		Explosion-Proof Terminal Box		Net Weight	
		in	mm			Without Thermostat	With Thermostat 50°F to 250°F (10°C to 120°C)	Without Thermostat	With Thermostat 50°F to 250°F (10°C to 120°C)	Without Thermostat	With Thermostat 50°F to 250°F (10°C to 120°C)	lbs	kg
Copper Sheath Brass Plug 54 to 60 W/in ² (8.3 to 8.9 W/cm ²)	7.5	21.7	551	1	208	CXC375P221	CXCT375P221	CXC375P2R21	CXCT375P2R21	CXC375P2X21	CXCT375P2X21	13.2	6
				3	208	CXC375P223	CXCT375P223	CXC375P2R23	CXCT375P2R23	CXC375P2X23	CXCT375P2X23		
				1	240	CXC375P231	CXCT375P231	CXC375P2R31	CXCT375P2R31	CXC375P2X31	CXCT375P2X31		
				1	480	CXC375P271	CXCT375P271	CXC375P2R71	CXCT375P2R71	CXC375P2X71	CXCT375P2X71		
				3	480	CXC375P273	CXCT375P273	CXC375P2R73	CXCT375P2R73	CXC375P2X73	CXCT375P2X73		
				1	600	CXC375P281	CXCT375P281	CXC375P2R81	CXCT375P2R81	CXC375P2X81	CXCT375P2X81		
	9.0	25.6	650	3	208	CXC390P223	CXCT390P223	CXC390P2R23	CXCT390P2R23	CXC390P2X23	CXCT390P2X23	15.4	7
				1	240	CXC390P231	CXCT390P231	CXC390P2R31	CXCT390P2R31	CXC390P2X31	CXCT390P2X31		
				1	480	CXC390P271	CXCT390P271	CXC390P2R71	CXCT390P2R71	CXC390P2X71	CXCT390P2X71		
				3	480	CXC390P273	CXCT390P273	CXC390P2R73	CXCT390P2R73	CXC390P2X73	CXCT390P2X73		
				1	600	CXC390P281	CXCT390P281	CXC390P2R81	CXCT390P2R81	CXC390P2X81	CXCT390P2X81		
	12.0	32.5	826	3	208	CXC3120P223	CXCT3120P223	CXC3120P2R23	CXCT3120P2R23	CXC3120P2X23	CXCT3120P2X23	15.4	7
				1	480	CXC3120P271	CXCT3120P271	CXC3120P2R71	CXCT3120P2R71	CXC3120P2X71	CXCT3120P2X71		
				3	480	CXC3120P273	CXCT3120P273	CXC3120P2R73	CXCT3120P2R73	CXC3120P2X73	CXCT3120P2X73		
				1	600	CXC3120P281	CXCT3120P281	CXC3120P2R81	CXCT3120P2R81	CXC3120P2X81	CXCT3120P2X81		
Incoloy® Sheath Steel Plug 23 W/in ² (3.6 W/cm ²)	3.0	17.7	450	1	120	CXF330P211	CXFT330P211	CXF330P2R11	CXFT330P2R11	CXF330P2X11	CXFT330P2X11	11	5
				1	208	CXF330P221	CXFT330P221	CXF330P2R21	CXFT330P2R21	CXF330P2X21	CXFT330P2X21		
				3	208	CXF330P223	CXFT330P223	CXF330P2R23	CXFT330P2R23	CXF330P2X23	CXFT330P2X23		
				1	240	CXF330P231	CXFT330P231	CXF330P2R31	CXFT330P2R31	CXF330P2X31	CXFT330P2X31		
				1	480	CXF330P271	CXFT330P271	CXF330P2R71	CXFT330P2R71	CXF330P2X71	CXFT330P2X71		
				3	480	CXF330P273	CXFT330P273	CXF330P2R73	CXFT330P2R73	CXF330P2X73	CXFT330P2X73		
				1	600	CXF330P281	CXFT330P281	CXF330P2R81	CXFT330P2R81	CXF330P2X81	CXFT330P2X81		
				3	600	CXF330P283	CXFT330P283	CXF330P2R83	CXFT330P2R83	CXF330P2X83	CXFT330P2X83		
	6.0	34	864	1	208	CXF360P23421	CXFT360P23421	CXF360P234R21	CXFT360P234R21	CXF360P234X21	CXFT360P234X21	13.2	6
				3	208	CXF360P23423	CXFT360P23423	CXF360P234R23	CXFT360P234R23	CXF360P234X23	CXFT360P234X23		
				1	240	CXF360P23431	CXFT360P23431	CXF360P234R31	CXFT360P234R31	CXF360P234X31	CXFT360P234X31		
				1	480	CXF360P23471	CXFT360P23471	CXF360P234R71	CXFT360P234R71	CXF360P234X71	CXFT360P234X71		
				3	480	CXF360P23473	CXFT360P23473	CXF360P234R73	CXFT360P234R73	CXF360P234X73	CXFT360P234X73		
				1	600	CXF360P23481	CXFT360P23481	CXF360P234R81	CXFT360P234R81	CXF360P234X81	CXFT360P234X81		
				3	600	CXF360P23483	CXFT360P23483	CXF360P234R83	CXFT360P234R83	CXF360P234X83	CXFT360P234X83		
9.0	50	1270	3	208	CXF390P25023	CXFT390P25023	CXF390P250R23	CXFT390P250R23	CXF390P250X23	CXFT390P250X23	15.4	7	
			1	240	CXF390P25031	CXFT390P25031	CXF390P250R31	CXFT390P250R31	CXF390P250X31	CXFT390P250X31			
			1	480	CXF390P25071	CXFT390P25071	CXF390P250R71	CXFT390P250R71	CXF390P250X71	CXFT390P250X71			
			3	480	CXF390P25073	CXFT390P25073	CXF390P250R73	CXFT390P250R73	CXF390P250X73	CXFT390P250X73			
			1	600	CXF390P25081	CXFT390P25081	CXF390P250R81	CXFT390P250R81	CXF390P250X81	CXFT390P250X81			
			3	600	CXF390P25083	CXFT390P25083	CXF390P250R83	CXFT390P250R83	CXF390P250X83	CXFT390P250X83			

To Order Specify

- Quantity
- Wattage
- Catalog number
- Special features
- Voltage

Table 4 – Screwplug Heaters (Three Element) - 2" NPT (Cont'd)

	kW	Immersion Length 'B'		Phase	Standard Voltage	General Purpose Terminal Box		NEMA 4 Terminal Box		Explosion-Proof Terminal Box		Net Weight	
		in	mm			Without Thermostat	With Thermostat 50°F to 250°F (10°C to 120°C)	Without Thermostat	With Thermostat 50°F to 250°F (10°C to 120°C)	Without Thermostat	With Thermostat 50°F to 250°F (10°C to 120°C)	lbs	kg
Incoloy® Sheath Steel Plug 15 W/in ² (2.3 W/cm ²)	1.5	17.7	450	1	120	CXF315P211	CXFT315P211	CXF315P2R11	CXFT315P2R11	CXF315P2X11	CXFT315P2X11	11	5
				1	208	CXF315P221	CXFT315P221	CXF315P2R21	CXFT315P2R21	CXF315P2X21	CXFT315P2X21		
				3	208	CXF315P223	CXFT315P223	CXF315P2R23	CXFT315P2R23	CXF315P2X23	CXFT315P2X23		
				1	240	CXF315P231	CXFT315P231	CXF315P2R31	CXFT315P2R31	CXF315P2X31	CXFT315P2X31		
				1	480	CXF315P271	CXFT315P271	CXF315P2R71	CXFT315P2R71	CXF315P2X71	CXFT315P2X71		
				3	480	CXF315P273	CXFT315P273	CXF315P2R73	CXFT315P2R73	CXF315P2X73	CXFT315P2X73		
				1	600	CXF315P281	CXFT315P281	CXF315P2R81	CXFT315P2R81	CXF315P2X81	CXFT315P2X81		
				3	600	CXF315P283	CXFT315P283	CXF315P2R83	CXFT315P2R83	CXF315P2X83	CXFT315P2X83		
	3.0	32.5	826	1	120	CXF330P23211	CXFT330P23211	CXF330P232R11	CXFT330P232R11	CXF330P232X11	CXFT330P232X11	15.4	7
				1	208	CXF330P23221	CXFT330P23221	CXF330P232R21	CXFT330P232R21	CXF330P232X21	CXFT330P232X21		
				3	208	CXF330P23223	CXFT330P23223	CXF330P232R23	CXFT330P232R23	CXF330P232X23	CXFT330P232X23		
				1	240	CXF330P23231	CXFT330P23231	CXF330P232R31	CXFT330P232R31	CXF330P232X31	CXFT330P232X31		
				1	480	CXF330P23271	CXFT330P23271	CXF330P232R71	CXFT330P232R71	CXF330P232X71	CXFT330P232X71		
				3	480	CXF330P23273	CXFT330P23273	CXF330P232R73	CXFT330P232R73	CXF330P232X73	CXFT330P232X73		
				1	600	CXF330P23281	CXFT330P23281	CXF330P232R81	CXFT330P232R81	CXF330P232X81	CXFT330P232X81		
				3	600	CXF330P23283	CXFT330P23283	CXF330P232R83	CXFT330P232R83	CXF330P232X83	CXFT330P232X83		
	4.5	39.4	1001	1	208	CXF345P221	CXFT345P221	CXF345P2R21	CXFT345P2R21	CXF345P2X21	CXFT345P2X21	15.4	7
				3	208	CXF345P223	CXFT345P223	CXF345P2R23	CXFT345P2R23	CXF345P2X23	CXFT345P2X23		
				1	240	CXF345P231	CXFT345P231	CXF345P2R31	CXFT345P2R31	CXF345P2X31	CXFT345P2X31		
				1	480	CXF345P271	CXFT345P271	CXF345P2R71	CXFT345P2R71	CXF345P2X71	CXFT345P2X71		
				3	480	CXF345P273	CXFT345P273	CXF345P2R73	CXFT345P2R73	CXF345P2X73	CXFT345P2X73		
				1	600	CXF345P281	CXFT345P281	CXF345P2R81	CXFT345P2R81	CXF345P2X81	CXFT345P2X81		
				3	600	CXF345P283	CXFT345P283	CXF345P2R83	CXFT345P2R83	CXF345P2X83	CXFT345P2X83		

To Order Specify

- Quantity
- Catalog number
- Voltage
- Wattage
- Special features

Table 5 – Screwplug Heaters (Three Element) - 2 1/2" NPT

	kW	Immersion Length 'B'		Phase	Standard Voltage	General Purpose Terminal Box		NEMA 4 Terminal Box		Explosion-Proof Terminal Box		Net Weight						
		in	mm			Without Thermostat	With Thermostat 50°F to 250°F (10°C to 120°C)	Without Thermostat	With Thermostat 50°F to 250°F (10°C to 120°C)	Without Thermostat	With Thermostat 50°F to 250°F (10°C to 120°C)	lbs	kg					
Copper Sheath Brass Plug 54 to 60 W/in ² (8.3 to 8.9 W/cm ²)	3.0	7.7	195	1	120	CXC330P2511	CXCT330P2511	CXC330P25R11	CXCT330P25R11	CXC330P25X11	CXCT330P25X11	8.8	4					
				1	208	CXC330P2521	CXCT330P2521	CXC330P25R21	CXCT330P25R21	CXC330P25X21	CXCT330P25X21							
				3	208	CXC330P2523	CXCT330P2523	CXC330P25R23	CXCT330P25R23	CXC330P25X23	CXCT330P25X23							
				1	240	CXC330P2531	CXCT330P2531	CXC330P25R31	CXCT330P25R31	CXC330P25X31	CXCT330P25X31							
				1	480	CXC330P2571	CXCT330P2571	CXC330P25R71	CXCT330P25R71	CXC330P25X71	CXCT330P25X71							
				3	480	CXC330P2573	CXCT330P2573	CXC330P25R73	CXCT330P25R73	CXC330P25X73	CXCT330P25X73							
				1	600	CXC330P2581	CXCT330P2581	CXC330P25R81	CXCT330P25R81	CXC330P25X81	CXCT330P25X81							
				3	600	CXC330P2583	CXCT330P2583	CXC330P25R83	CXCT330P25R83	CXC330P25X83	CXCT330P25X83							
	4.5	11.6	295	1	208	CXC345P2521	CXCT345P2521	CXC345P25R21	CXCT345P25R21	CXC345P25X21	CXCT345P25X21	8.8	4					
				3	208	CXC345P2523	CXCT345P2523	CXC345P25R23	CXCT345P25R23	CXC345P25X23	CXCT345P25X23							
				1	240	CXC345P2531	CXCT345P2531	CXC345P25R31	CXCT345P25R31	CXC345P25X31	CXCT345P25X31							
				1	480	CXC345P2571	CXCT345P2571	CXC345P25R71	CXCT345P25R71	CXC345P25X71	CXCT345P25X71							
				3	480	CXC345P2573	CXCT345P2573	CXC345P25R73	CXCT345P25R73	CXC345P25X73	CXCT345P25X73							
				1	600	CXC345P2581	CXCT345P2581	CXC345P25R81	CXCT345P25R81	CXC345P25X81	CXCT345P25X81							
				3	600	CXC345P2583	CXCT345P2583	CXC345P25R83	CXCT345P25R83	CXC345P25X83	CXCT345P25X83							
				6.0	17.5	445	1	208	CXC360P2521	CXCT360P2521	CXC360P25R21			CXCT360P25R21	CXC360P25X21	CXCT360P25X21	11	5
	3	208	CXC360P2523				CXCT360P2523	CXC360P25R23	CXCT360P25R23	CXC360P25X23	CXCT360P25X23							
	1	240	CXC360P2531				CXCT360P2531	CXC360P25R31	CXCT360P25R31	CXC360P25X31	CXCT360P25X31							
	1	480	CXC360P2571				CXCT360P2571	CXC360P25R71	CXCT360P25R71	CXC360P25X71	CXCT360P25X71							
	3	480	CXC360P2573				CXCT360P2573	CXC360P25R73	CXCT360P25R73	CXC360P25X73	CXCT360P25X73							
	1	600	CXC360P2581				CXCT360P2581	CXC360P25R81	CXCT360P25R81	CXC360P25X81	CXCT360P25X81							
	3	600	CXC360P2583				CXCT360P2583	CXC360P25R83	CXCT360P25R83	CXC360P25X83	CXCT360P25X83							
	7.5	21.5	545				1	208	CXC375P2521	CXCT375P2521	CXC375P25R21	CXCT375P25R21	CXC375P25X21	CXCT375P25X21	11	5		
				3	208	CXC375P2523	CXCT375P2523	CXC375P25R23	CXCT375P25R23	CXC375P25X23	CXCT375P25X23							
				1	240	CXC375P2531	CXCT375P2531	CXC375P25R31	CXCT375P25R31	CXC375P25X31	CXCT375P25X31							
				1	480	CXC375P2571	CXCT375P2571	CXC375P25R71	CXCT375P25R71	CXC375P25X71	CXCT375P25X71							
				3	480	CXC375P2573	CXCT375P2573	CXC375P25R73	CXCT375P25R73	CXC375P25X73	CXCT375P25X73							
				1	600	CXC375P2581	CXCT375P2581	CXC375P25R81	CXCT375P25R81	CXC375P25X81	CXCT375P25X81							
				3	600	CXC375P2583	CXCT375P2583	CXC375P25R83	CXCT375P25R83	CXC375P25X83	CXCT375P25X83							
				9.0	25.4	645	3	208	CXC390P2523	CXCT390P2523	CXC390P25R23	CXCT390P25R23	CXC390P25X23	CXCT390P25X23			13.2	6
	1	240	CXC390P2531				CXCT390P2531	CXC390P25R31	CXCT390P25R31	CXC390P25X31	CXCT390P25X31							
	1	480	CXC390P2571				CXCT390P2571	CXC390P25R71	CXCT390P25R71	CXC390P25X71	CXCT390P25X71							
	3	480	CXC390P2573				CXCT390P2573	CXC390P25R73	CXCT390P25R73	CXC390P25X73	CXCT390P25X73							
	1	600	CXC390P2581				CXCT390P2581	CXC390P25R81	CXCT390P25R81	CXC390P25X81	CXCT390P25X81							
	3	600	CXC390P2583				CXCT390P2583	CXC390P25R83	CXCT390P25R83	CXC390P25X83	CXCT390P25X83							
	12.0	32.3	820				3	208	CXC3120P2523	CXCT3120P2523	CXC3120P25R23	CXCT3120P25R23	CXC3120P25X23	CXCT3120P25X23	13.2	6		
							1	480	CXC3120P2571	CXCT3120P2571	CXC3120P25R71	CXCT3120P25R71	CXC3120P25X71	CXCT3120P25X71				
				3	480	CXC3120P2573	CXCT3120P2573	CXC3120P25R73	CXCT3120P25R73	CXC3120P25X73	CXCT3120P25X73							
				1	600	CXC3120P2581	CXCT3120P2581	CXC3120P25R81	CXCT3120P25R81	CXC3120P25X81	CXCT3120P25X81							
				3	600	CXC3120P2583	CXCT3120P2583	CXC3120P25R83	CXCT3120P25R83	CXC3120P25X83	CXCT3120P25X83							
				15.0	39.2	995	3	208	CXC3150P2523	CXCT3150P2523	CXC3150P25R23	CXCT3150P25R23	CXC3150P25X23	CXCT3150P25X23			15.4	7
	1	480	CXC3150P2571				CXCT3150P2571	CXC3150P25R71	CXCT3150P25R71	CXC3150P25X71	CXCT3150P25X71							
3	480	CXC3150P2573	CXCT3150P2573				CXC3150P25R73	CXCT3150P25R73	CXC3150P25X73	CXCT3150P25X73								
1	600	CXC3150P2581	CXCT3150P2581				CXC3150P25R81	CXCT3150P25R81	CXC3150P25X81	CXCT3150P25X81								
3	600	CXC3150P2583	CXCT3150P2583				CXC3150P25R83	CXCT3150P25R83	CXC3150P25X83	CXCT3150P25X83								
18.0	47	1195	3				208	CXC3180P2523	CXCT3180P2523	CXC3180P25R23	CXCT3180P25R23	CXC3180P25X23	CXCT3180P25X23	15.4	7			
			1	480	CXC3180P2571	CXCT3180P2571	CXC3180P25R71	CXCT3180P25R71	CXC3180P25X71	CXCT3180P25X71								
			3	480	CXC3180P2573	CXCT3180P2573	CXC3180P25R73	CXCT3180P25R73	CXC3180P25X73	CXCT3180P25X73								
			1	600	CXC3180P2581	CXCT3180P2581	CXC3180P25R81	CXCT3180P25R81	CXC3180P25X81	CXCT3180P25X81								
			3	600	CXC3180P2583	CXCT3180P2583	CXC3180P25R83	CXCT3180P25R83	CXC3180P25X83	CXCT3180P25X83								

Table 5 – Screwplug Heaters (Three Element) - 2 1/2" NPT (Cont'd)

	kW	Immersion Length 'B'		Phase	Standard Voltage	General Purpose Terminal Box		NEMA 4 Terminal Box		Explosion-Proof Terminal Box		Net Weight			
		in	mm			Without Thermostat	With Thermostat 50°F to 250°F (10°C to 120°C)	Without Thermostat	With Thermostat 50°F to 250°F (10°C to 120°C)	Without Thermostat	With Thermostat 50°F to 250°F (10°C to 120°C)	Without Thermostat	With Thermostat 50°F to 250°F (10°C to 120°C)	lbs	kg
Incoloy® Sheath Stainless Steel Plug 54 to 60 W/in ² (8.3 to 8.9 W/cm ²)	3.0	7.7	195	1	120	CXI330P2511	CXIT330P2511	CXI330P25R11	CXIT330P25R11	CXI330P25X11	CXIT330P25X11	8.8	4		
				1	208	CXI330P2521	CXIT330P2521	CXI330P25R21	CXIT330P25R21	CXI330P25X21	CXIT330P25X21				
				3	208	CXI330P2523	CXIT330P2523	CXI330P25R23	CXIT330P25R23	CXI330P25X23	CXIT330P25X23				
				1	240	CXI330P2531	CXIT330P2531	CXI330P25R31	CXIT330P25R31	CXI330P25X31	CXIT330P25X31				
				1	480	CXI330P2571	CXIT330P2571	CXI330P25R71	CXIT330P25R71	CXI330P25X71	CXIT330P25X71				
				3	480	CXI330P2573	CXIT330P2573	CXI330P25R73	CXIT330P25R73	CXI330P25X73	CXIT330P25X73				
				1	600	CXI330P2581	CXIT330P2581	CXI330P25R81	CXIT330P25R81	CXI330P25X81	CXIT330P25X81				
				3	600	CXI330P2583	CXIT330P2583	CXI330P25R83	CXIT330P25R83	CXI330P25X83	CXIT330P25X83				
	4.5	11.6	295	1	208	CXI345P2521	CXIT345P2521	CXI345P25R21	CXIT345P25R21	CXI345P25X21	CXIT345P25X21	8.8	4		
				3	208	CXI345P2523	CXIT345P2523	CXI345P25R23	CXIT345P25R23	CXI345P25X23	CXIT345P25X23				
				1	240	CXI345P2531	CXIT345P2531	CXI345P25R31	CXIT345P25R31	CXI345P25X31	CXIT345P25X31				
				1	480	CXI345P2571	CXIT345P2571	CXI345P25R71	CXIT345P25R71	CXI345P25X71	CXIT345P25X71				
				3	480	CXI345P2573	CXIT345P2573	CXI345P25R73	CXIT345P25R73	CXI345P25X73	CXIT345P25X73				
				1	600	CXI345P2581	CXIT345P2581	CXI345P25R81	CXIT345P25R81	CXI345P25X81	CXIT345P25X81				
				3	600	CXI345P2583	CXIT345P2583	CXI345P25R83	CXIT345P25R83	CXI345P25X83	CXIT345P25X83				
				6.0	17.5	445	1	208	CXI360P2521	CXIT360P2521	CXI360P25R21			CXIT360P25R21	CXI360P25X21
	3	208	CXI360P2523				CXIT360P2523	CXI360P25R23	CXIT360P25R23	CXI360P25X23	CXIT360P25X23				
	1	240	CXI360P2531				CXIT360P2531	CXI360P25R31	CXIT360P25R31	CXI360P25X31	CXIT360P25X31				
	1	480	CXI360P2571				CXIT360P2571	CXI360P25R71	CXIT360P25R71	CXI360P25X71	CXIT360P25X71				
	3	480	CXI360P2573				CXIT360P2573	CXI360P25R73	CXIT360P25R73	CXI360P25X73	CXIT360P25X73				
	1	600	CXI360P2581				CXIT360P2581	CXI360P25R81	CXIT360P25R81	CXI360P25X81	CXIT360P25X81				
	3	600	CXI360P2583				CXIT360P2583	CXI360P25R83	CXIT360P25R83	CXI360P25X83	CXIT360P25X83				
	7.5	21.5	545				1	208	CXI375P2521	CXIT375P2521	CXI375P25R21	CXIT375P25R21	CXI375P25X21	CXIT375P25X21	11
				3	208	CXI375P2523	CXIT375P2523	CXI375P25R23	CXIT375P25R23	CXI375P25X23	CXIT375P25X23				
				1	240	CXI375P2531	CXIT375P2531	CXI375P25R31	CXIT375P25R31	CXI375P25X31	CXIT375P25X31				
				1	480	CXI375P2571	CXIT375P2571	CXI375P25R71	CXIT375P25R71	CXI375P25X71	CXIT375P25X71				
				3	480	CXI375P2573	CXIT375P2573	CXI375P25R73	CXIT375P25R73	CXI375P25X73	CXIT375P25X73				
				1	600	CXI375P2581	CXIT375P2581	CXI375P25R81	CXIT375P25R81	CXI375P25X81	CXIT375P25X81				
				3	600	CXI375P2583	CXIT375P2583	CXI375P25R83	CXIT375P25R83	CXI375P25X83	CXIT375P25X83				
				9.0	25.4	645	3	208	CXI390P2523	CXIT390P2523	CXI390P25R23	CXIT390P25R23	CXI390P25X23	CXIT390P25X23	
		240	CXI390P2531				CXIT390P2531	CXI390P25R31	CXIT390P25R31	CXI390P25X31	CXIT390P25X31				
		480	CXI390P2571				CXIT390P2571	CXI390P25R71	CXIT390P25R71	CXI390P25X71	CXIT390P25X71				
		480	CXI390P2573				CXIT390P2573	CXI390P25R73	CXIT390P25R73	CXI390P25X73	CXIT390P25X73				
		600	CXI390P2581				CXIT390P2581	CXI390P25R81	CXIT390P25R81	CXI390P25X81	CXIT390P25X81				
		600	CXI390P2583				CXIT390P2583	CXI390P25R83	CXIT390P25R83	CXI390P25X83	CXIT390P25X83				
	12.0	32.3	820	3	208	CXI3120P2523	CXIT3120P2523	CXI3120P25R23	CXIT3120P25R23	CXI3120P25X23	CXIT3120P25X23	13.2	6		
				1	480	CXI3120P2571	CXIT3120P2571	CXI3120P25R71	CXIT3120P25R71	CXI3120P25X71	CXIT3120P25X71				
				3	480	CXI3120P2573	CXIT3120P2573	CXI3120P25R73	CXIT3120P25R73	CXI3120P25X73	CXIT3120P25X73				
				1	600	CXI3120P2581	CXIT3120P2581	CXI3120P25R81	CXIT3120P25R81	CXI3120P25X81	CXIT3120P25X81				
				3	600	CXI3120P2583	CXIT3120P2583	CXI3120P25R83	CXIT3120P25R83	CXI3120P25X83	CXIT3120P25X83				
	15.0	39.2	820	3	208	CXI3150P2523	CXIT3150P2523	CXI3150P25R23	CXIT3150P25R23	CXI3150P25X23	CXIT3150P25X23	15.4	7		
				1	480	CXI3150P2571	CXIT3150P2571	CXI3150P25R71	CXIT3150P25R71	CXI3150P25X71	CXIT3150P25X71				
3				480	CXI3150P2573	CXIT3150P2573	CXI3150P25R73	CXIT3150P25R73	CXI3150P25X73	CXIT3150P25X73					
1				600	CXI3150P2581	CXIT3150P2581	CXI3150P25R81	CXIT3150P25R81	CXI3150P25X81	CXIT3150P25X81					
3				600	CXI3150P2583	CXIT3150P2583	CXI3150P25R83	CXIT3150P25R83	CXI3150P25X83	CXIT3150P25X83					
18.0	47	1195	3	208	CXI3180P2523	CXIT3180P2523	CXI3180P25R23	CXIT3180P25R23	CXI3180P25X23	CXIT3180P25X23	15.4	7			
			1	480	CXI3180P2571	CXIT3180P2571	CXI3180P25R71	CXIT3180P25R71	CXI3180P25X71	CXIT3180P25X71					
			3	480	CXI3180P2573	CXIT3180P2573	CXI3180P25R73	CXIT3180P25R73	CXI3180P25X73	CXIT3180P25X73					
			1	600	CXI3180P2581	CXIT3180P2581	CXI3180P25R81	CXIT3180P25R81	CXI3180P25X81	CXIT3180P25X81					
			3	600	CXI3180P2583	CXIT3180P2583	CXI3180P25R83	CXIT3180P25R83	CXI3180P25X83	CXIT3180P25X83					

Table 5 – Screwplug Heaters (Three Element) - 2 1/2" NPT (Cont'd)

	kW	Immersion Length 'B'		Phase	Standard Voltage	General Purpose Terminal Box		NEMA 4 Terminal Box		Explosion-Proof Terminal Box		Net Weight	
		in	mm			Without Thermostat	With Thermostat 50°F to 250°F (10°C to 120°C)	Without Thermostat	With Thermostat 50°F to 250°F (10°C to 120°C)	Without Thermostat	With Thermostat 50°F to 250°F (10°C to 120°C)	lbs	kg
Incoloy® Sheath Steel Plug 23 W/in² (3.6 W/cm²)	3.0	17.5	445	1	120	CXF330P2511	CXFT330P2511	CXF330P25R11	CXFT330P25R11	CXF330P25X11	CXFT330P25X11	11	5
				1	208	CXF330P2521	CXFT330P2521	CXF330P25R21	CXFT330P25R21	CXF330P25X21	CXFT330P25X21		
				3	208	CXF330P2523	CXFT330P2523	CXF330P25R23	CXFT330P25R23	CXF330P25X23	CXFT330P25X23		
				1	240	CXF330P2531	CXFT330P2531	CXF330P25R31	CXFT330P25R31	CXF330P25X31	CXFT330P25X31		
				1	480	CXF330P2571	CXFT330P2571	CXF330P25R71	CXFT330P25R71	CXF330P25X71	CXFT330P25X71		
				3	480	CXF330P2573	CXFT330P2573	CXF330P25R73	CXFT330P25R73	CXF330P25X73	CXFT330P25X73		
				1	600	CXF330P2581	CXFT330P2581	CXF330P25R81	CXFT330P25R81	CXF330P25X81	CXFT330P25X81		
				3	600	CXF330P2583	CXFT330P2583	CXF330P25R83	CXFT330P25R83	CXF330P25X83	CXFT330P25X83		
	6.0	25.4	645	1	208	CXF345P2521	CXFT345P2521	CXF345P25R21	CXFT345P25R21	CXF345P25X21	CXFT345P25X21	13.2	6
				3	208	CXF345P2523	CXFT345P2523	CXF345P25R23	CXFT345P25R23	CXF345P25X23	CXFT345P25X23		
				1	240	CXF345P2531	CXFT345P2531	CXF345P25R31	CXFT345P25R31	CXF345P25X31	CXFT345P25X31		
				1	480	CXF345P2571	CXFT345P2571	CXF345P25R71	CXFT345P25R71	CXF345P25X71	CXFT345P25X71		
				3	480	CXF345P2573	CXFT345P2573	CXF345P25R73	CXFT345P25R73	CXF345P25X73	CXFT345P25X73		
				1	600	CXF345P2581	CXFT345P2581	CXF345P25R81	CXFT345P25R81	CXF345P25X81	CXFT345P25X81		
				3	600	CXF345P2583	CXFT345P2583	CXF345P25R83	CXFT345P25R83	CXF345P25X83	CXFT345P25X83		
				1	208	CXF360P253421	CXFT360P253421	CXF360P2534R21	CXFT360P2534R21	CXF360P2534X21	CXFT360P2534X21		
				3	208	CXF360P253423	CXFT360P253423	CXF360P2534R23	CXFT360P2534R23	CXF360P2534X23	CXFT360P2534X23		
				1	240	CXF360P253431	CXFT360P253431	CXF360P2534R31	CXFT360P2534R31	CXF360P2534X31	CXFT360P2534X31		
				1	480	CXF360P253471	CXFT360P253471	CXF360P2534R71	CXFT360P2534R71	CXF360P2534X71	CXFT360P2534X71		
				3	480	CXF360P253473	CXFT360P253473	CXF360P2534R73	CXFT360P2534R73	CXF360P2534X73	CXFT360P2534X73		
	7.5	42	1067	3	208	CXF375P254223	CXFT375P254223	CXF375P2542R23	CXFT375P2542R23	CXF375P2542X23	CXFT375P2542X23	15.4	7
				1	240	CXF375P254231	CXFT375P254231	CXF375P2542R31	CXFT375P2542R31	CXF375P2542X31	CXFT375P2542X31		
				1	480	CXF375P254271	CXFT375P254271	CXF375P2542R71	CXFT375P2542R71	CXF375P2542X71	CXFT375P2542X71		
				3	480	CXF375P254273	CXFT375P254273	CXF375P2542R73	CXFT375P2542R73	CXF375P2542X73	CXFT375P2542X73		
				1	600	CXF375P254281	CXFT375P254281	CXF375P2542R81	CXFT375P2542R81	CXF375P2542X81	CXFT375P2542X81		
				3	600	CXF375P254283	CXFT375P254283	CXF375P2542R83	CXFT375P2542R83	CXF375P2542X83	CXFT375P2542X83		
	9.0	50	1270	3	208	CXF390P25023	CXFT390P25023	CXF390P250R23	CXFT390P250R23	CXF390P250X23	CXFT390P250X23	15.4	7
				1	240	CXF390P25031	CXFT390P25031	CXF390P250R31	CXFT390P250R31	CXF390P250X31	CXFT390P250X31		
				1	480	CXF390P25071	CXFT390P25071	CXF390P250R71	CXFT390P250R71	CXF390P250X71	CXFT390P250X71		
				3	480	CXF390P25073	CXFT390P25073	CXF390P250R73	CXFT390P250R73	CXF390P250X73	CXFT390P250X73		
				1	600	CXF390P25081	CXFT390P25081	CXF390P250R81	CXFT390P250R81	CXF390P250X81	CXFT390P250X81		
				3	600	CXF390P25083	CXFT390P25083	CXF390P250R83	CXFT390P250R83	CXF390P250X83	CXFT390P250X83		

To Order Specify

- Quantity
- Wattage
- Catalog number
- Special features
- Voltage

Table 5 – Screwplug Heaters (Three Element) - 2 1/2" NPT (Cont'd)

	kW	Immersion Length 'B'		Phase	Standard Voltage	General Purpose Terminal Box		NEMA 4 Terminal Box		Explosion-Proof Terminal Box		Net Weight	
		in	mm			Without Thermostat	With Thermostat 50°F to 250°F (10°C to 120°C)	Without Thermostat	With Thermostat 50°F to 250°F (10°C to 120°C)	Without Thermostat	With Thermostat 50°F to 250°F (10°C to 120°C)	lbs	kg
Incoloy® Sheath Stainless Steel Plug 23 W/in ² (3.6 W/cm ²)	3.0	17.5	445	1	120	CXI330P251711	CXIT330P251711	CXI330P2517R11	CXIT330P2517R11	CXI330P2517X11	CXIT330P2517X11	11	5
				1	208	CXI330P251721	CXIT330P251721	CXI330P2517R21	CXIT330P2517R21	CXI330P2517X21	CXIT330P2517X21		
				3	208	CXI330P251723	CXIT330P251723	CXI330P2517R23	CXIT330P2517R23	CXI330P2517X23	CXIT330P2517X23		
				1	240	CXI330P251731	CXIT330P251731	CXI330P2517R31	CXIT330P2517R31	CXI330P2517X31	CXIT330P2517X31		
				1	480	CXI330P251771	CXIT330P251771	CXI330P2517R71	CXIT330P2517R71	CXI330P2517X71	CXIT330P2517X71		
				3	480	CXI330P251773	CXIT330P251773	CXI330P2517R73	CXIT330P2517R73	CXI330P2517X73	CXIT330P2517X73		
				1	600	CXI330P251781	CXIT330P251781	CXI330P2517R81	CXIT330P2517R81	CXI330P2517X81	CXIT330P2517X81		
				3	600	CXI330P251783	CXIT330P251783	CXI330P2517R83	CXIT330P2517R83	CXI330P2517X83	CXIT330P2517X83		
	4.5	25.4	645	1	208	CXI345P252521	CXIT345P252521	CXI345P2525R21	CXIT345P2525R21	CXI345P2525X21	CXIT345P2525X21	13.2	5
				3	208	CXI345P252523	CXIT345P252523	CXI345P2525R23	CXIT345P2525R23	CXI345P2525X23	CXIT345P2525X23		
				1	240	CXI345P252531	CXIT345P252531	CXI345P2525R31	CXIT345P2525R31	CXI345P2525X31	CXIT345P2525X31		
				1	480	CXI345P252571	CXIT345P252571	CXI345P2525R71	CXIT345P2525R71	CXI345P2525X71	CXIT345P2525X71		
				3	480	CXI345P252573	CXIT345P252573	CXI345P2525R73	CXIT345P2525R73	CXI345P2525X73	CXIT345P2525X73		
				1	600	CXI345P252581	CXIT345P252581	CXI345P2525R81	CXIT345P2525R81	CXI345P2525X81	CXIT345P2525X81		
				3	600	CXI345P252583	CXIT345P252583	CXI345P2525R83	CXIT345P2525R83	CXI345P2525X83	CXIT345P2525X83		
	6.0	34	864	1	208	CXI360P253421	CXIT360P253421	CXI360P2534R21	CXIT360P2534R21	CXI360P2534X21	CXIT360P2534X21	13.2	5
				3	208	CXI360P253423	CXIT360P253423	CXI360P2534R23	CXIT360P2534R23	CXI360P2534X23	CXIT360P2534X23		
				1	240	CXI360P253431	CXIT360P253431	CXI360P2534R31	CXIT360P2534R31	CXI360P2534X31	CXIT360P2534X31		
				1	480	CXI360P253471	CXIT360P253471	CXI360P2534R71	CXIT360P2534R71	CXI360P2534X71	CXIT360P2534X71		
				3	480	CXI360P253473	CXIT360P253473	CXI360P2534R73	CXIT360P2534R73	CXI360P2534X73	CXIT360P2534X73		
				1	600	CXI360P253481	CXIT360P253481	CXI360P2534R81	CXIT360P2534R81	CXI360P2534X81	CXIT360P2534X81		
				3	600	CXI360P253483	CXIT360P253483	CXI360P2534R83	CXIT360P2534R83	CXI360P2534X83	CXIT360P2534X83		
	7.5	42	1067	3	208	CXI375P254223	CXIT375P254223	CXI375P2542R23	CXIT375P2542R23	CXI375P2542X23	CXIT375P2542X23	15.4	7
				1	240	CXI375P254231	CXIT375P254231	CXI375P2542R31	CXIT375P2542R31	CXI375P2542X31	CXIT375P2542X31		
				1	480	CXI375P254271	CXIT375P254271	CXI375P2542R71	CXIT375P2542R71	CXI375P2542X71	CXIT375P2542X71		
				3	480	CXI375P254273	CXIT375P254273	CXI375P2542R73	CXIT375P2542R73	CXI375P2542X73	CXIT375P2542X73		
				1	600	CXI375P254281	CXIT375P254281	CXI375P2542R81	CXIT375P2542R81	CXI375P2542X81	CXIT375P2542X81		
				3	600	CXI375P254283	CXIT375P254283	CXI375P2542R83	CXIT375P2542R83	CXI375P2542X83	CXIT375P2542X83		
3				600	CXI375P254283	CXIT375P254283	CXI375P2542R83	CXIT375P2542R83	CXI375P2542X83	CXIT375P2542X83			
9.0	50	1270	3	208	CXI390P255023	CXIT390P255023	CXI390P2550R23	CXIT390P2550R23	CXI390P2550X23	CXIT390P2550X23	15.4	7	
			1	240	CXI390P255031	CXIT390P255031	CXI390P2550R31	CXIT390P2550R31	CXI390P2550X31	CXIT390P2550X31			
			1	480	CXI390P255071	CXIT390P255071	CXI390P2550R71	CXIT390P2550R71	CXI390P2550X71	CXIT390P2550X71			
			3	480	CXI390P255073	CXIT390P255073	CXI390P2550R73	CXIT390P2550R73	CXI390P2550X73	CXIT390P2550X73			
			1	600	CXI390P255081	CXIT390P255081	CXI390P2550R81	CXIT390P2550R81	CXI390P2550X81	CXIT390P2550X81			
			3	600	CXI390P255083	CXIT390P255083	CXI390P2550R83	CXIT390P2550R83	CXI390P2550X83	CXIT390P2550X83			
			3	600	CXI390P255083	CXIT390P255083	CXI390P2550R83	CXIT390P2550R83	CXI390P2550X83	CXIT390P2550X83			
Incoloy® Sheath Steel Plug 15 W/in ² (2.3 W/cm ²)	1.5	17.7	450	1	120	CXF315P251711	CXFT315P251711	CXF315P2517R11	CXFT315P2517R11	CXF315P2517X11	CXFT315P2517X11	11	5
				1	208	CXF315P251721	CXFT315P251721	CXF315P2517R21	CXFT315P2517R21	CXF315P2517X21	CXFT315P2517X21		
				3	208	CXF315P251723	CXFT315P251723	CXF315P2517R23	CXFT315P2517R23	CXF315P2517X23	CXFT315P2517X23		
				1	240	CXF315P251731	CXFT315P251731	CXF315P2517R31	CXFT315P2517R31	CXF315P2517X31	CXFT315P2517X31		
				1	480	CXF315P251771	CXFT315P251771	CXF315P2517R71	CXFT315P2517R71	CXF315P2517X71	CXFT315P2517X71		
				3	480	CXF315P251773	CXFT315P251773	CXF315P2517R73	CXFT315P2517R73	CXF315P2517X73	CXFT315P2517X73		
				1	600	CXF315P251781	CXFT315P251781	CXF315P2517R81	CXFT315P2517R81	CXF315P2517X81	CXFT315P2517X81		
				3	600	CXF315P251783	CXFT315P251783	CXF315P2517R83	CXFT315P2517R83	CXF315P2517X83	CXFT315P2517X83		
	3.0	32.5	825	1	120	CXF330P253211	CXFT330P253211	CXF330P2532R11	CXFT330P2532R11	CXF330P2532X11	CXFT330P2532X11	15.4	7
				1	208	CXF330P253221	CXFT330P253221	CXF330P2532R21	CXFT330P2532R21	CXF330P2532X21	CXFT330P2532X21		
				3	208	CXF330P253223	CXFT330P253223	CXF330P2532R23	CXFT330P2532R23	CXF330P2532X23	CXFT330P2532X23		
				1	240	CXF330P253231	CXFT330P253231	CXF330P2532R31	CXFT330P2532R31	CXF330P2532X31	CXFT330P2532X31		
				1	480	CXF330P253271	CXFT330P253271	CXF330P2532R71	CXFT330P2532R71	CXF330P2532X71	CXFT330P2532X71		
				3	480	CXF330P253273	CXFT330P253273	CXF330P2532R73	CXFT330P2532R73	CXF330P2532X73	CXFT330P2532X73		
				1	600	CXF330P253281	CXFT330P253281	CXF330P2532R81	CXFT330P2532R81	CXF330P2532X81	CXFT330P2532X81		
3	600	CXF330P253283	CXFT330P253283	CXF330P2532R83	CXFT330P2532R83	CXF330P2532X83	CXFT330P2532X83						

Table 5 – Screwplug Heaters (Three Element) - 2 1/2" NPT (Cont'd)

	kW	Immersion Length 'B'		Phase	Standard Voltage	General Purpose Terminal Box		NEMA 4 Terminal Box		Explosion-Proof Terminal Box		Net Weight	
		in	mm			Without Thermostat	With Thermostat 50°F to 250°F (10°C to 120°C)	Without Thermostat	With Thermostat 50°F to 250°F (10°C to 120°C)	Without Thermostat	With Thermostat 50°F to 250°F (10°C to 120°C)	lbs	kg
Incoloy® Sheath Steel Plug 15 W/in² (2.3 W/cm²)	4.5	39.2	995	1	208	CXF345P253921	CXFT345P253921	CXF345P2539R21	CXFT345P2539R21	CXF345P2539X21	CXFT345P2539X21	15.4	7
				3	208	CXF345P253923	CXFT345P253923	CXF345P2539R23	CXFT345P2539R23	CXF345P2539X23	CXFT345P2539X23		
				1	240	CXF345P253931	CXFT345P253931	CXF345P2539R31	CXFT345P2539R31	CXF345P2539X31	CXFT345P2539X31		
				1	480	CXF345P253971	CXFT345P253971	CXF345P2539R71	CXFT345P2539R71	CXF345P2539X71	CXFT345P2539X71		
				3	480	CXF345P253973	CXFT345P253973	CXF345P2539R73	CXFT345P2539R73	CXF345P2539X73	CXFT345P2539X73		
				1	600	CXF345P253981	CXFT345P253981	CXF345P2539R81	CXFT345P2539R81	CXF345P2539X81	CXFT345P2539X81		
	6.0	51	1295	3	600	CXF345P253983	CXFT345P253983	CXF345P2539R83	CXFT345P2539R83	CXF345P2539X83	CXFT345P2539X83	15.4	7
				1	208	CXF360P255121	CXFT360P255121	CXF360P2551R21	CXFT360P2551R21	CXF360P2551X21	CXFT360P2551X21		
				3	208	CXF360P255123	CXFT360P255123	CXF360P2551R23	CXFT360P2551R23	CXF360P2551X23	CXFT360P2551X23		
				1	240	CXF360P255131	CXFT360P255131	CXF360P2551R31	CXFT360P2551R31	CXF360P2551X31	CXFT360P2551X31		
				1	480	CXF360P255171	CXFT360P255171	CXF360P2551R71	CXFT360P2551R71	CXF360P2551X71	CXFT360P2551X71		
				3	480	CXF360P255173	CXFT360P255173	CXF360P2551R73	CXFT360P2551R73	CXF360P2551X73	CXFT360P2551X73		
				1	600	CXF360P255181	CXFT360P255181	CXF360P2551R81	CXFT360P2551R81	CXF360P2551X81	CXFT360P2551X81		
				3	600	CXF360P255183	CXFT360P255183	CXF360P2551R83	CXFT360P2551R83	CXF360P2551X83	CXFT360P2551X83		
Incoloy® Sheath Stainless Steel Plug 15 W/in² (2.3 W/cm²)	1.5	17.7	450	1	120	CXI315P251711	CXIT315P251711	CXI315P2517R11	CXIT315P2517R11	CXI315P2517X11	CXIT315P2517X11	11	5
				1	208	CXI315P251721	CXIT315P251721	CXI315P2517R21	CXIT315P2517R21	CXI315P2517X21	CXIT315P2517X21		
				3	208	CXI315P251723	CXIT315P251723	CXI315P2517R23	CXIT315P2517R23	CXI315P2517X23	CXIT315P2517X23		
				1	240	CXI315P251731	CXIT315P251731	CXI315P2517R31	CXIT315P2517R31	CXI315P2517X31	CXIT315P2517X31		
				1	480	CXI315P251771	CXIT315P251771	CXI315P2517R71	CXIT315P2517R71	CXI315P2517X71	CXIT315P2517X71		
				3	480	CXI315P251773	CXIT315P251773	CXI315P2517R73	CXIT315P2517R73	CXI315P2517X73	CXIT315P2517X73		
				1	600	CXI315P251781	CXIT315P251781	CXI315P2517R81	CXIT315P2517R81	CXI315P2517X81	CXIT315P2517X81		
				3	600	CXI315P251783	CXIT315P251783	CXI315P2517R83	CXIT315P2517R83	CXI315P2517X83	CXIT315P2517X83		
	3.0	32.5	825	1	120	CXI330P253211	CXIT330P253211	CXI330P2532R11	CXIT330P2532R11	CXI330P2532X11	CXIT330P2532X11	15.4	7
				1	208	CXI330P253221	CXIT330P253221	CXI330P2532R21	CXIT330P2532R21	CXI330P2532X21	CXIT330P2532X21		
				3	208	CXI330P253223	CXIT330P253223	CXI330P2532R23	CXIT330P2532R23	CXI330P2532X23	CXIT330P2532X23		
				1	240	CXI330P253231	CXIT330P253231	CXI330P2532R31	CXIT330P2532R31	CXI330P2532X31	CXIT330P2532X31		
				1	480	CXI330P253271	CXIT330P253271	CXI330P2532R71	CXIT330P2532R71	CXI330P2532X71	CXIT330P2532X71		
				3	480	CXI330P253273	CXIT330P253273	CXI330P2532R73	CXIT330P2532R73	CXI330P2532X73	CXIT330P2532X73		
1				600	CXI330P253281	CXIT330P253281	CXI330P2532R81	CXIT330P2532R81	CXI330P2532X81	CXIT330P2532X81			
3				600	CXI330P253283	CXIT330P253283	CXI330P2532R83	CXIT330P2532R83	CXI330P2532X83	CXIT330P2532X83			
4.5	39.2	995	1	208	CXI345P253921	CXIT345P253921	CXI345P2539R21	CXIT345P2539R21	CXI345P2539X21	CXIT345P2539X21	15.4	7	
			3	208	CXI345P253923	CXIT345P253923	CXI345P2539R23	CXIT345P2539R23	CXI345P2539X23	CXIT345P2539X23			
			1	240	CXI345P253931	CXIT345P253931	CXI345P2539R31	CXIT345P2539R31	CXI345P2539X31	CXIT345P2539X31			
			1	480	CXI345P253971	CXIT345P253971	CXI345P2539R71	CXIT345P2539R71	CXI345P2539X71	CXIT345P2539X71			
			3	480	CXI345P253973	CXIT345P253973	CXI345P2539R73	CXIT345P2539R73	CXI345P2539X73	CXIT345P2539X73			
			1	600	CXI345P253981	CXIT345P253981	CXI345P2539R81	CXIT345P2539R81	CXI345P2539X81	CXIT345P2539X81			
			3	600	CXI345P253983	CXIT345P253983	CXI345P2539R83	CXIT345P2539R83	CXI345P2539X83	CXIT345P2539X83			
			1	208	CXI360P255121	CXIT360P255121	CXI360P2551R21	CXIT360P2551R21	CXI360P2551X21	CXIT360P2551X21			
			3	208	CXI360P255123	CXIT360P255123	CXI360P2551R23	CXIT360P2551R23	CXI360P2551X23	CXIT360P2551X23			
			1	240	CXI360P255131	CXIT360P255131	CXI360P2551R31	CXIT360P2551R31	CXI360P2551X31	CXIT360P2551X31			
			1	480	CXI360P255171	CXIT360P255171	CXI360P2551R71	CXIT360P2551R71	CXI360P2551X71	CXIT360P2551X71			
			3	480	CXI360P255173	CXIT360P255173	CXI360P2551R73	CXIT360P2551R73	CXI360P2551X73	CXIT360P2551X73			
			1	600	CXI360P255181	CXIT360P255181	CXI360P2551R81	CXIT360P2551R81	CXI360P2551X81	CXIT360P2551X81			
			3	600	CXI360P255183	CXIT360P255183	CXI360P2551R83	CXIT360P2551R83	CXI360P2551X83	CXIT360P2551X83			

Special Features (Check Factory)

Heaters With Built-in Thermostats

All screwplug heaters listed are available with built-in thermostats. Heaters with thermostats have a "T" added to their catalog no. prefix. Standard thermostat range is 50°F to 250°F (10°C to 120°C). Ratings are normally 25 amps at 240V single pole single throw. 600V thermostats and double pole thermostats are available on special order.

Special Thermostat Ranges

Thermostats with the following temperature ranges are also available upon request:

- 0°F to 100°F (-18°C to 40°C)
- 150°F to 550°F (70°C to 280°C)
- 300°F to 700°F (150°C to 370°C)

Terminal Housings

Shown below are the different types of terminal housings used with screwplug heaters.

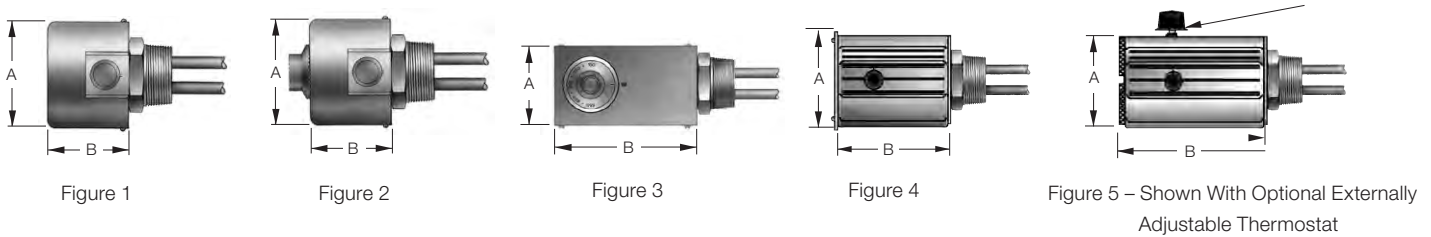


Table 6 – Terminal Housings

Description	Figure	'A'		'B'	
		in	mm	in	mm
Standard Housing Without Thermostat	1	4.000	102	2.750	70
Standard Thermostat Housing (1 Pole)	2	4.000	102	4.000	102
Special Thermostat Housing	3	4.125	106	7.000	180
Moisture Resistant Housing with 1 Pole Thermostat or without Thermostat	4	4.250	108	7.250	185
Moisture Resistant Housing with 2 Pole Thermostat	4	4.250	108	8.500	215
Explosion-Proof Housing with 1 Pole Thermostat or without Thermostat	5	4.250	108	8.000	205
Explosion-Proof Housing with 2 Pole Thermostat	5	4.250	108	9.250	235

Voltage

Custom built heaters are available in any special voltage rating up to 600V.

Wattage

Heaters listed are standard wattage. Any reasonable wattage is available to replace your present heater with a similar Caloritech™ unit.

Length

Heaters are available with immersed lengths up to 135" (3430 mm). Internal vessel support must be used when immersed length exceeds 49" (1245 mm).

Plug Sizes and Ratings

Thermon Heating Systems can install elements in virtually any size or rating of plug, special or standard.

Special Materials

Special sheath, plug and terminal box materials are available on request.

Welded Elements

While welded elements are standard for CXI heaters, CXF heaters listed have the elements silver brazed to the plug which suits most applications. Thermon Heating Systems can provide listed CXF heaters with elements welded to the plug.

Built-in Thermostat Well

Built-in thermostat wells are available. Specify length and internal diameter required.

Heaters ordered with explosion-proof or moisture resistant housings have built-in wells as standard.

Passivation

Incoloy® and stainless steel sheathed heaters are available with chemically passivated sheaths which will provide superior corrosion resistance in most applications. Passivation is achieved through an electropolishing technique.

Heaters with stainless steel plugs are available with all wetted surfaces passivated.

Moisture Resistant Terminal Housings

Moisture resistant terminal housings suitable for outdoor applications are available for all heater sizes. See Figure 4 on page B20.

Explosion-Proof Terminal Housings

If the heater is to be operated in a hazardous environment an explosion-proof housing must be used. See Figure 5 on page B20. Specify Class, Div. (or Zone), Group and Temp. Code for the hazardous location.