



model 8164

AXION® MSR Emergency Drench Shower

FEATURES & BENEFITS

QUALITY CONTROL

Valve assembly is pre-built for reduced installation time and an added peace of mind for the installer.

VALVES

Brass stay-open ball valve is designed so the full flow of water remains on with the simple tug of a pull down lever. Unit also comes equipped with a stainless steel ball and stem to provide added protection against corrosion and breakage.

SHOWER HEAD

AXION® MSR stainless steel showerhead uses a hydrodynamic design to give equal distribution of water throughout the entire footprint of flow.

SAFETY

8" x 10-3/4" (20.3 x 27.3 cm) universal emergency sign make the unit easily detected in an emergency. Test card to record weekly checks helps maintain the unit's best working quality.

PULL ROD

Pull down lever is mounted within a recessed stainless steel wall cabinet for easy locating while providing a finished look.



OPTIONS

- ☐ **Thermostatic Mixing Valve:** Model 9201E AXION® Emergency Tempering Valve thermostatically mixes hot and cold water to provide a safe fluid supply for emergency showers and eyewash equipment, with a flow rate of 31 gpm (117.3 L).
- ☐ **Thermostatic Mixing Valve:** Model 9201H Lead-free AXION® Emergency Tempering Valve thermostatically mixes hot and cold water to provide a safe fluid supply for emergency showers and eyewash equipment, with a flow rate of 31 gpm (117.3 L).
- ☐ **Scald Protection Bleed Valve:** Model SP157B, fully engineered scald protection valve.
- ☐ **Emergency Alarm System:** Model 9001, 1-1/4" 120 VAC emergency alarm and light system. Buzzer and flashing light are activated by an 1-1/4" double pole, double throw flow switch.

For more information, visit www.hawesco.com or call (888) 640-4297.

SPECIFICATIONS

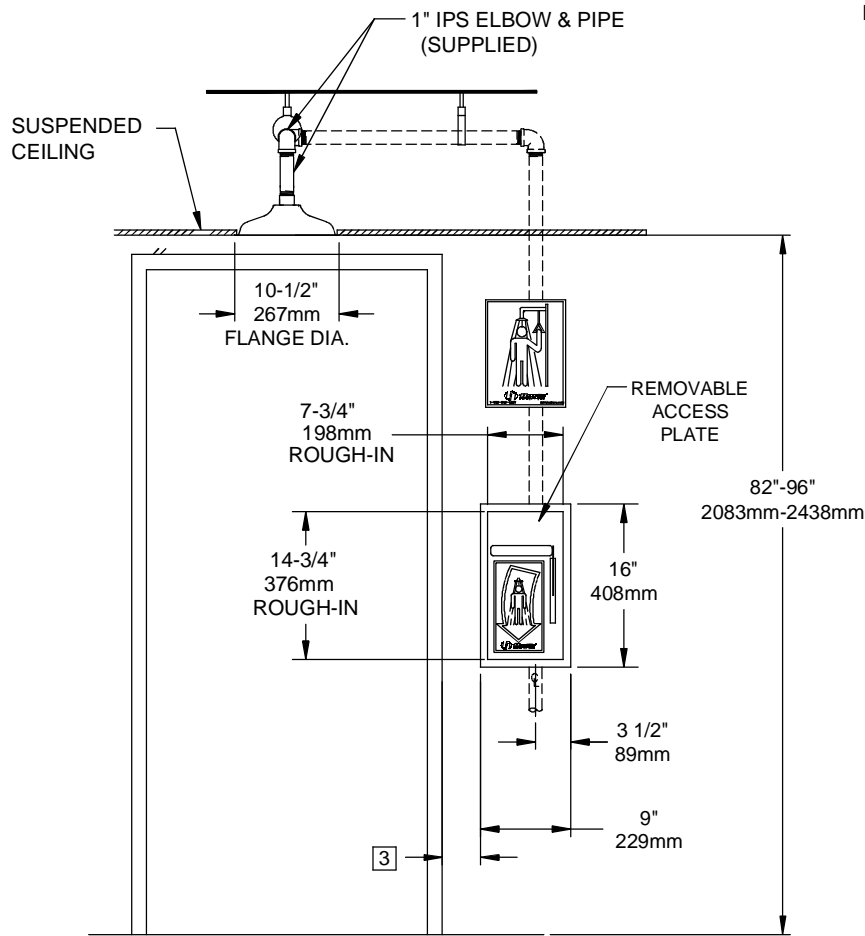
Model 8164 flush ceiling mounted drench shower shall include the AXION® MSR hydrodynamic design polished stainless steel showerhead with 20 gpm flow control mounted in or hanging down from the ceiling, brass stay-open ball valve equipped with stainless steel ball and stem, recessed stainless steel wall cabinet with pull down lever, universal sign, and 1" NPT supply.

APPLICATIONS

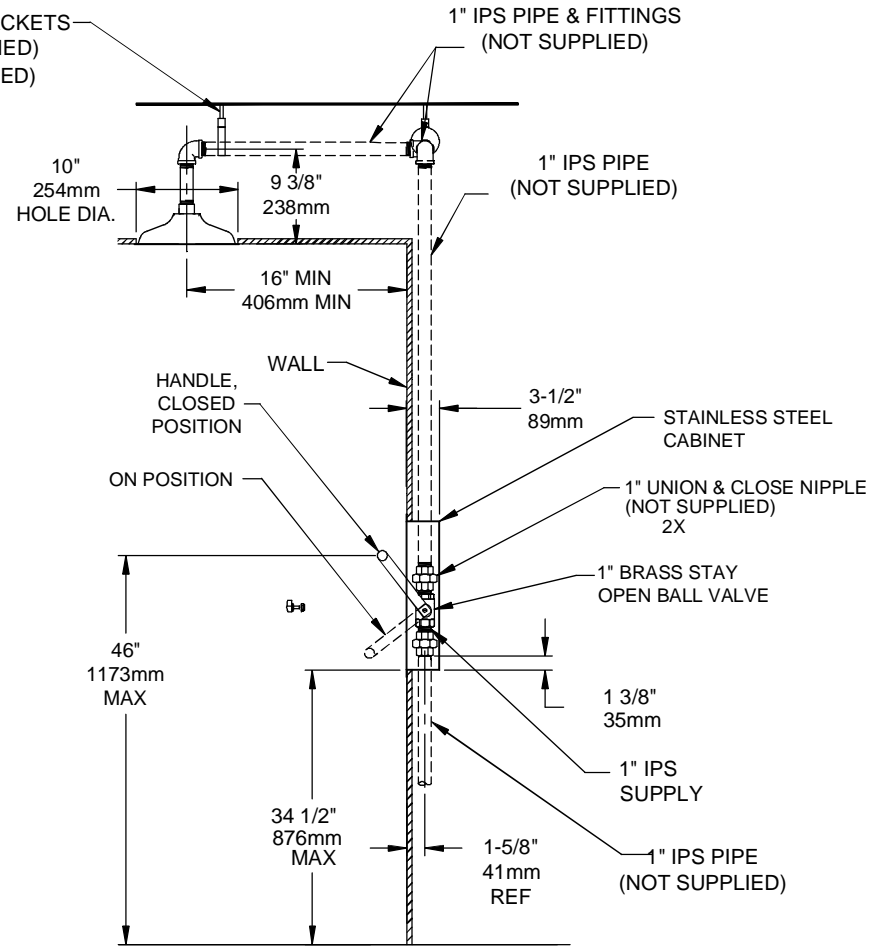
Where the body of any person may be exposed to injurious or corrosive materials, suitable facilities for quick drenching or cleansing of the body shall be provided within the work area for immediate emergency use. Emergency eyewash facilities and deluge showers shall be in unobstructed and accessible locations that require no more than 10 seconds for the injured person to reach. Model 8164 is certified by CSA to meet the ANSI Z358.1 Standard for Emergency Eyewash and Shower Equipment.



SEE SHT. 2 OF 2 FOR ALTERNATE "HANG DOWN" INSTALLATION



HANGER BRACKETS
(NOT SUPPLIED)
(AS REQUIRED)




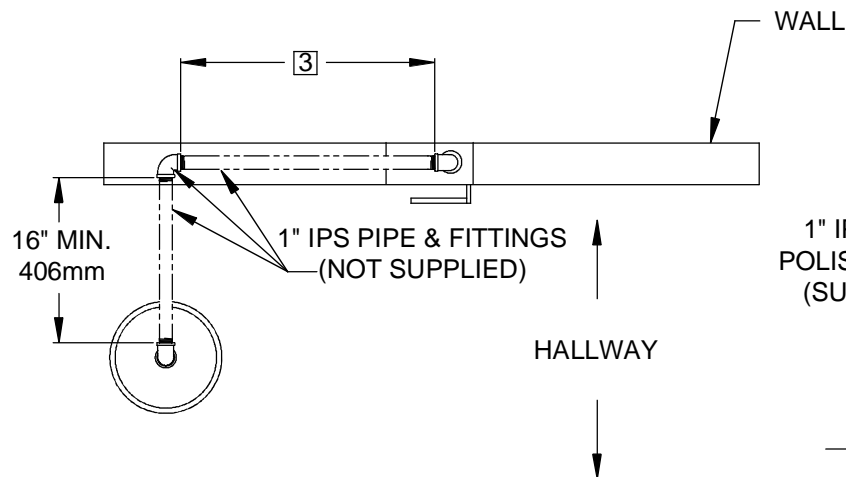
NOTES:

- TO COMPLY WITH ANSI Z358.1-2009 FOR EMERGENCY SHOWER EQUIPMENT:
 - UNIT SHALL BE INSTALLED IN ACCORDANCE WITH MANUFACTURER'S INSTRUCTIONS AND ACCEPTABLE PLUMBING PRACTICES.
 - SHOWER SHALL BE POSITIONED SO THAT SHOWER HEAD IS NOT LESS THAN 208.3 CM (82 IN.) NOR MORE THAN 243.8 CM (96 IN.) FROM SURFACE ON WHICH USER STANDS.
 - SHOWER SPRAY PATTERN SHALL HAVE A MINIMUM DIAMETER OF 50.8 CM (20 IN.) AT 152.4 CM (60 IN.) ABOVE SURFACE ON WHICH USER STANDS, AND CENTER OF SPRAY PATTERN SHALL BE LOCATED AT LEAST 40.6 CM (16 IN.) FROM ANY OBSTRUCTION.

- DIMENSIONS MAY VARY $\pm 1/2$ " [12.7mm].

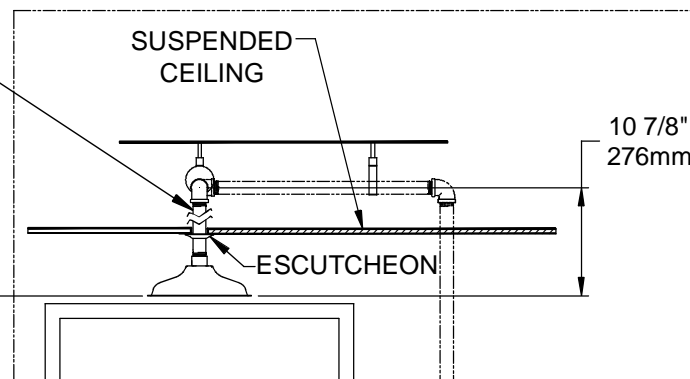
- INSTALL STAINLESS STEEL CABINET AS CLOSE TO DOOR JAM AS POSSIBLE.

		1455 KLEPPE LANE SPARKS, NEVADA 89431 (775) 359-4712 FAX (775) 359-7424 E-MAIL: HAWS@HAWS.CO.COM WEBSITE: WWW.HAWS.CO.COM	
		PART NUMBER: 0002080138.D	
ECN NO. REVISED PER BY:	ECN: 4838	HM	MODEL(S)
DRAWN: DO	DATE: 03/09/00	CHKD:	8164
APPROVED:	DATE:		SHOWER
SCALE: 1/19		DRAWING TYPE: INSTALLATION	
SIZE: A		SHEET 1 OF 2	



TOP VIEW

1" IPS HIGH
POLISH NIPPLE
(SUPPLIED)




FOR ALTERNATE "HANG DOWN" INSTALLATION
OF SHOWER HEAD (SHOWN ABOVE) PERFORM
THE FOLLOWING STEPS:
A) SWAP OUT 1" X 5" NIPPLE FOR
1" X 6-1/2" HI POLISHED NIPPLE (SUPPLIED)
B) USE CEILING ESCUTCHEON FOR 1" PIPE (SUPPLIED)

ALTERNATE "HANG DOWN" INSTALLATION

NOTES:

- TO COMPLY WITH ANSI Z358.1-2009 FOR EMERGENCY SHOWER EQUIPMENT:
 - UNIT SHALL BE INSTALLED IN ACCORDANCE WITH MANUFACTURER'S INSTRUCTIONS AND ACCEPTABLE PLUMBING PRACTICES.
 - SHOWER SHALL BE POSITIONED SO THAT SHOWERHEAD IS NOT LESS THAN 208.3 CM (82 IN.) NOR MORE THAN 243.8 CM (96 IN.) FROM SURFACE ON WHICH USER STANDS.
 - SHOWER SPRAY PATTERN SHALL HAVE A MINIMUM DIAMETER OF 50.8 CM (20 IN.) AT 152.4 CM (60 IN.) ABOVE SURFACE ON WHICH USER STANDS, AND CENTER OF SPRAY PATTERN SHALL BE LOCATED AT LEAST 40.6 CM (16 IN.) FROM ANY OBSTRUCTION.
- DIMENSIONS MAY VARY $\pm 1/2"$ [12.7mm].

[3] INSTALL STAINLESS STEEL CABINET AS CLOSE TO DOOR JAM AS POSSIBLE.

		1455 KLEPPE LANE SPARKS, NEVADA 89431 (775) 359-4712 FAX (775) 359-7424 E-MAIL: HAWS@HAWS.CO.COM WEBSITE: WWW.HAWS.CO.COM	
		ECN NO. REVISED PER BY: ECN: 4838 HM	MODEL(S) 8164 SHOWER
DRAWN: DO	DATE: 03/09/00	CHKD.: DATE:	DRAWING NO.: 13622A00
APPROVED:	DATE:	SCALE: 1/19	DRAWING TYPE: INSTALLATION
		SIZE: A	SHEET 2 OF 2