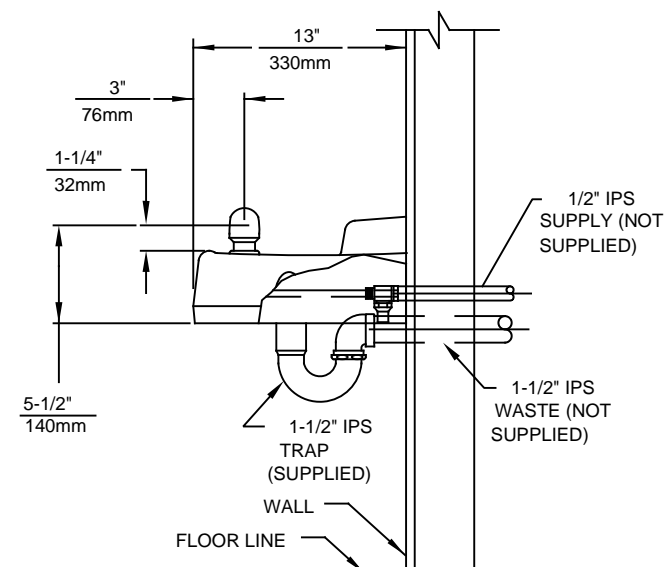
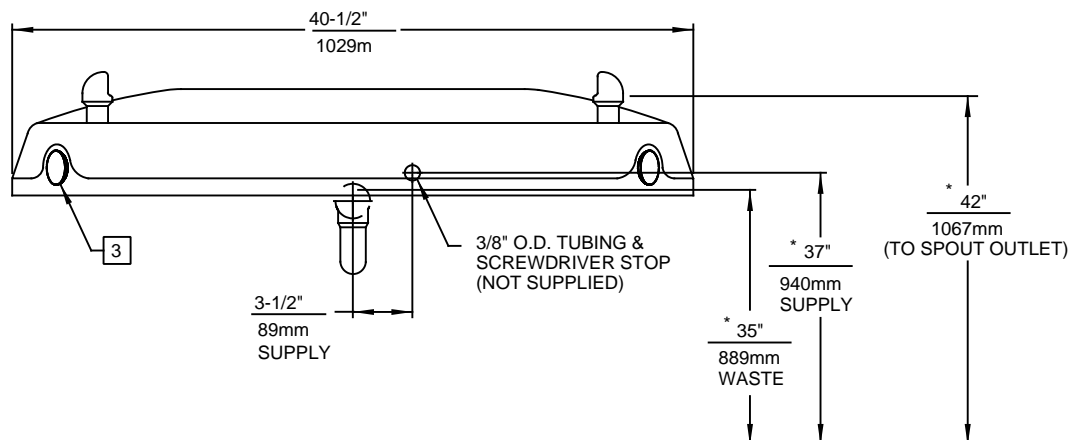
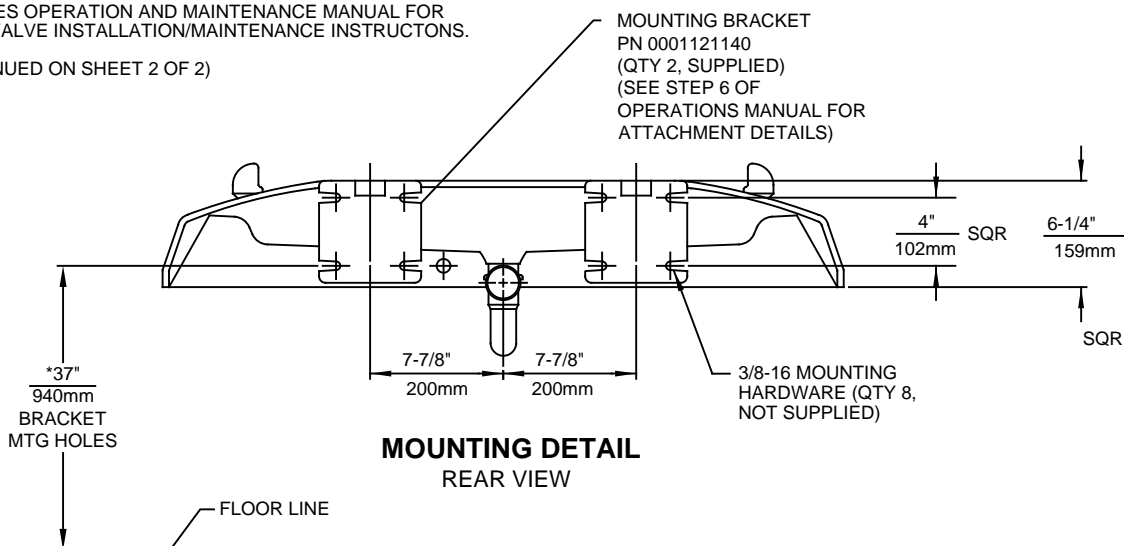


NOTES:

1. ROUGH-IN DIMENSIONS MAY VARY $\pm 1/4"$ (6.4mm).
2. WHEN INSTALLING THIS UNIT LOCAL, STATE OR FEDERAL CODES SHOULD BE ADHERED TO. FOR INSTALLATION HEIGHTS OTHER THAN SHOWN, DIMENSIONS MARKED (*) MUST BE ADJUSTED ACCORDINGLY.
3. REFER TO 5874 SERIES OPERATION AND MAINTENANCE MANUAL FOR PUSH BUTTON AND VALVE INSTALLATION/MAINTENANCE INSTRUCTIONS.

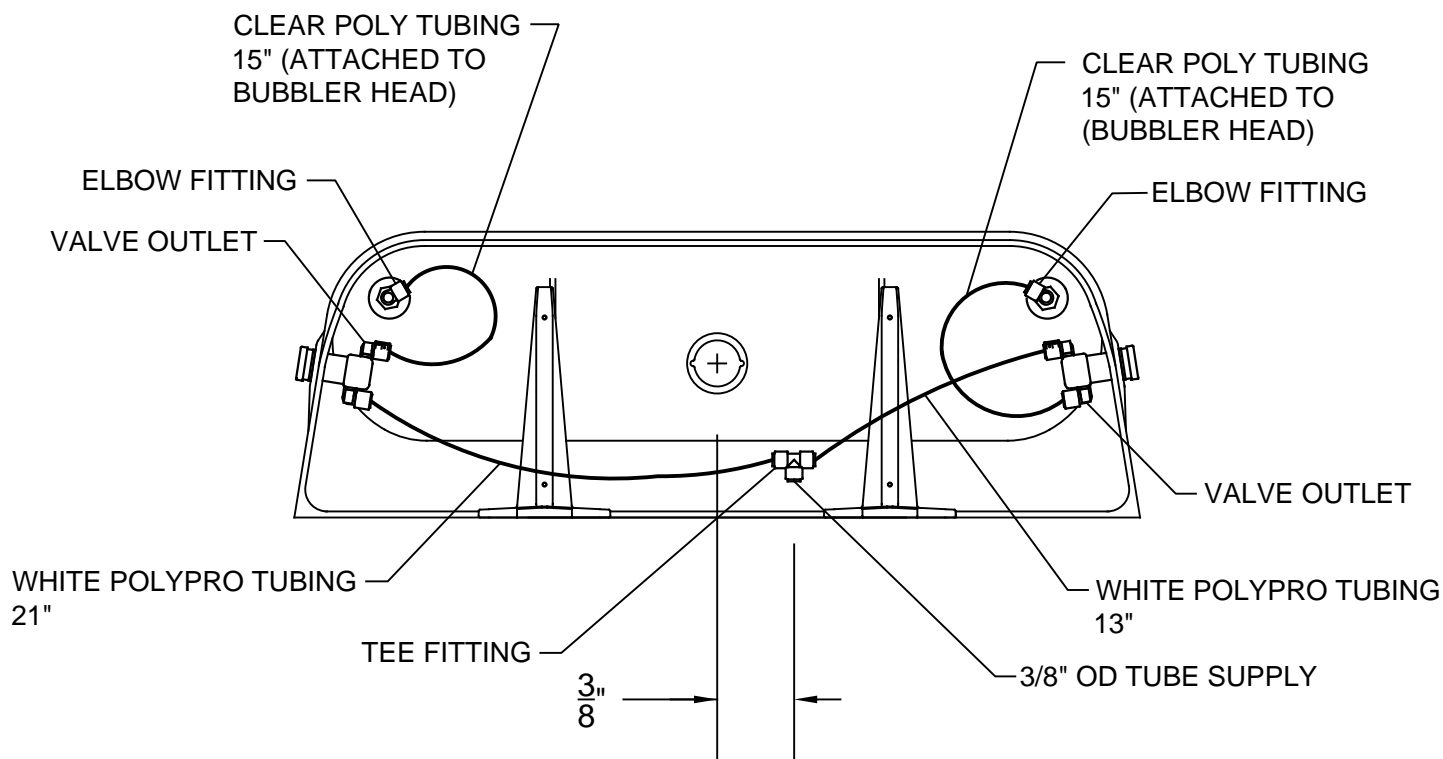
(NOTES CONTINUED ON SHEET 2 OF 2)




 Haws®				1455 KLEPPE LANE SPARKS, NEVADA 89431 (775) 359-4712 FAX (775) 359-7424 E-MAIL: HAWS@HAWS.CO.COM WEBSITE: WWW.HAWS.CO.COM			
ECN NO.	REVISED PER	BY:	MODEL(S)	1430		PART NUMBER	0002076850.D
DRAWN:	DATE:	CHK'D:	TWO BUBBLER FOUNTAIN		REVISION	18	
APPROVED:	DATE:	SCALE:	DRAWING TYPE:	INSTALLATION	SIZE:	SHEET	1 OF 2
FV	07/06/17	1:11					

NOTES: (CONTINUED)

4. CONNECT WHITE "POLYPROPYLENE" TUBING ON PRESSURE SIDE (INLET) OF VALVE.
5. CONNECT CLEAR "POLYETHYLENE" TUBING ON FREE FLOW SIDE (VALVE TO BUBBLER HEAD) ONLY.



TUBING ROUTING DETAIL
BOTTOM VIEW

 Haws®				1455 KLEPPE LANE SPARKS, NEVADA 89431 (775) 359-4712 FAX (775) 359-7424 E-MAIL: HAWS@HAWSO.COM WEBSITE: WWW.HAWSO.COM			
ECN NO.	REVISED PER	BY:	MODEL(S)	1430		PART NUMBER	0002076850.D
DRAWN:	DATE:	CHK'D:	TWO BUBBLER FOUNTAIN		REVISION	18	
APPROVED:	DATE:	SCALE:	DRAWING TYPE:	INSTALLATION	SIZE:	SHEET	2 OF 2
FV	07/06/17	1:11			A		