



Haws[®]

model **1107L-1920**

ADA Low Profile Wall-Mount Fountain and Bottle Filler

FEATURES & BENEFITS

CONSTRUCTION

One-piece stamped basin with low-profile design made of 14-gauge Type 304 stainless steel with integral 1/4" (.6 cm) mounting plate, and vandal-resistant bottom plate. Satin finish resists stains and corrosion.

BOTTLE FILLER

Vandal-resistant, 14-gauge Type 304 stainless steel bottle filler housing with push button operation and 1 gpm (3.78 L) laminar flow.

FOUNTAIN VALVES

The push-button activated valves have all stainless steel bodies, with chrome plated brass push button assemblies which allow for front access to water stream adjustment, water control cartridge, and water supply strainer replacement without having to go through the bottom plate. access. Operating pressure range of 30 to 90 psi (2.1 to 6.2 bar).

BUBBLER HEAD

Polished chrome-plated brass bubbler head with integral 1 1/16" dia. basin shank and stainless anti-rotation roll pin for vandal resistance strength. Shielded, angled stream opening provides a steady, sanitary source of drinking water at .45 gpm.

ACCESS

Low-profile designed bowl and integral trap allow for knee clearance for adult or child ADA access (when installed at appropriate heights).



REQUIRED MODELS

1107L / BP7 / 1920 / BP15

Order these items to make up the Model 1107L-1920 fountain with stainless steel back panel, bottle filler with stainless steel back plate.

OPTIONS

Mounting Plate: Model 6700, in-wall mounting plate for model 1920 and/or model 1107L.

Mounting Plate: Model 6700R, on-wall mounting plate for model 1920.

Support Frame: Model 6800 In-wall floor mounted fixture support legs, welded steel 4-bolt floor flanges, and supplied with 'U' bolts and hardware.

Water Filter: Model 6426, 10" x 2" (25.4 x 5.1 cm), in-line lead removal element that reduces lead from incoming water supply.

Custom Logo Panel: Standard Model 6475 comes with "Hydration By Haws™" logo. Customize the panel with your choice of logo, slogan, or graphic. For customization, call 888-640-4297.

SPECIFICATIONS

Model 1107L-1920 wall-mounted ADA drinking fountain and bottle filler shall include a 14-gauge Type 304 Stainless Steel satin-finish basin with integral 1/4" stainless steel mounting plate, 14 gauge bottle filler bracket, push button operated stainless steel valves with front accessible cartridge and flow adjustment that provide 100% lead-free waterways, polished chrome plated brass vandal-resistant bubbler head, 1 gpm (3.78 L) laminar flow bottle filler, polished chrome-plated brass vandal-resistant waste strainer, vandal-resistant bottom plates, and 1-1/4" NPT integral trap. Unit can be mounted to meet ADA or Child ADA specifications. Manufactured to be lead-free by all known definitions including NSF/ ANSI/CAN 61-Section 9, NSF/ANSI/ CAN 372, California Proposition 65, and the Federal Safe Drinking Water Act. Product is compliant to California Health and Safety Code 116875 (AB 1953-2006), and NSF/ ANSI/CAN 61: Q ≤ 1.



NOTES:

1. HOLD ROUGH-IN DIMENSIONS ± 1/4" (6.4mm)
2. WHEN INSTALLING THIS UNIT, LOCAL, STATE OR FEDERAL CODES SHOULD BE ADHERED TO. FOR INSTALLATION HEIGHTS OTHER THAN SHOWN, DIMENSIONS MARKED (*) MUST BE ADJUSTED ACCORDINGLY.
3. REFER TO 5874 SERIES OPERATION AND MAINTENANCE MANUAL FOR PUSH BUTTON AND VALVE INSTALLATION AND MAINTENANCE INSTRUCTIONS.
4. ROUGH IN DIMENSIONS FOR FOUNTAIN HEIGHTS:

CHILD WHEELCHAIR HEIGHT: SEE SHT 2 FIG 1

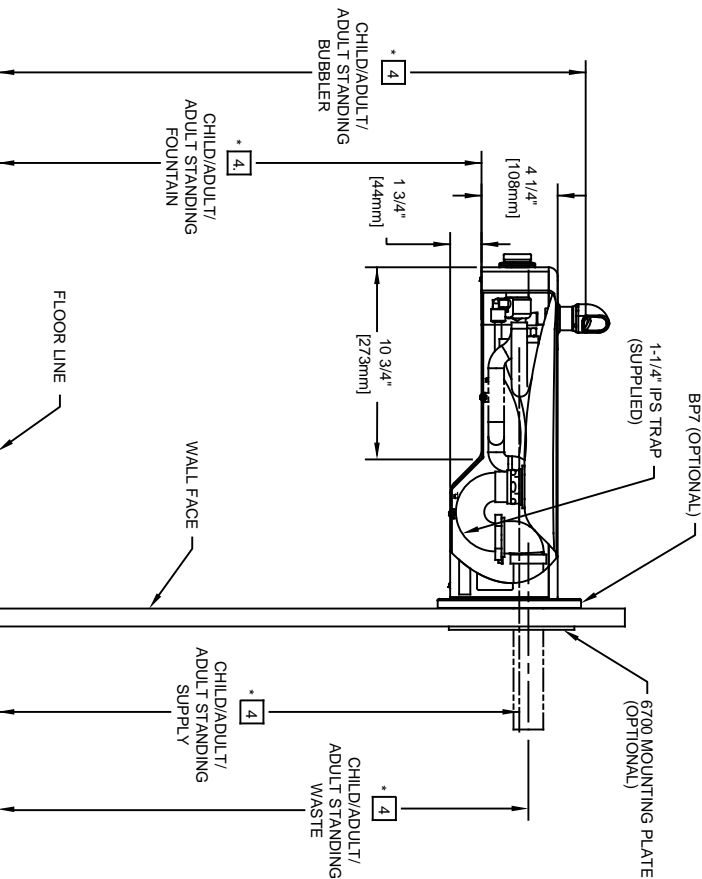
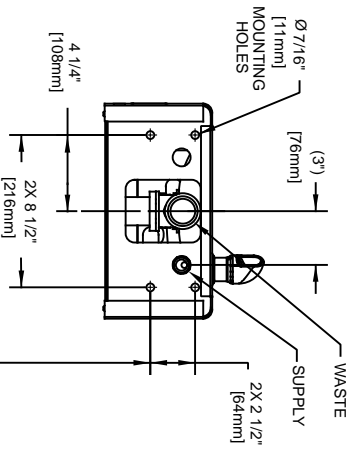
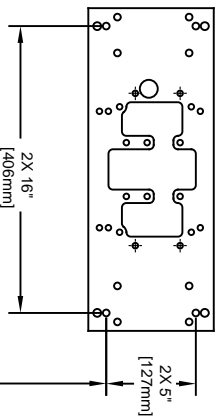
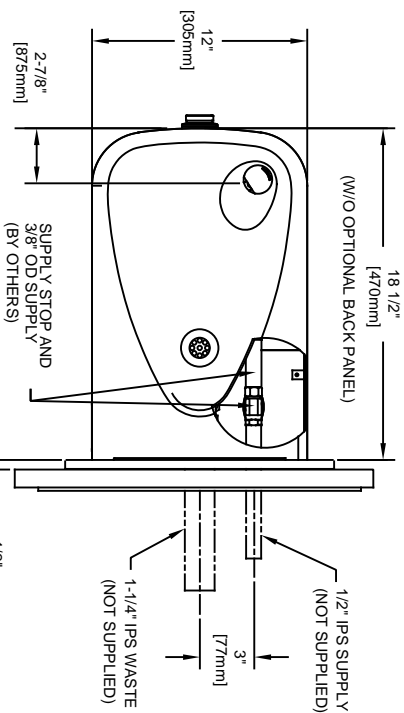
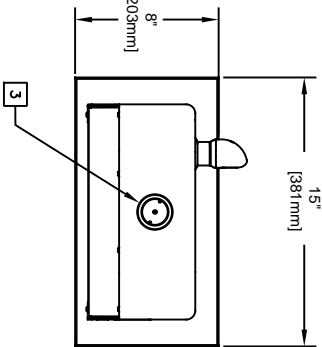
- WASTE: 26-1/4" (667mm)
- SUPPLY: 26-1/8" (664mm)
- MOUNTING HOLE: 24-13/16" (630mm)
- MOUNTING PLATE: 23-3/16" (589mm)
- FOUNTAIN: 24" (610mm)
- BUBBLER: 29-7/8" (756mm)

ADULT WHEELCHAIR HEIGHT: SEE SHT 2 FIG 2

- WASTE: 29-1/4" (743mm)
- SUPPLY: 29-1/8" (740mm)
- MOUNTING HOLE: 27-13/16" (706mm)
- MOUNTING PLATE: 26-3/16" (665mm)
- FOUNTAIN: 27" (686mm)
- BUBBLER: 32-7/8" (832mm)

STANDING ADULT HEIGHT: SEE SHT 2 FIG 3

- WASTE: 34-3/4" (883mm)
- SUPPLY: 34-5/8" (879mm)
- MOUNTING HOLE: 33-5/16" (846mm)
- MOUNTING PLATE: 31-1/16" (805mm)
- FOUNTAIN: 32-1/5" (826mm)
- BUBBLER: 38-3/8" (972mm)



MOUNTING DETAIL

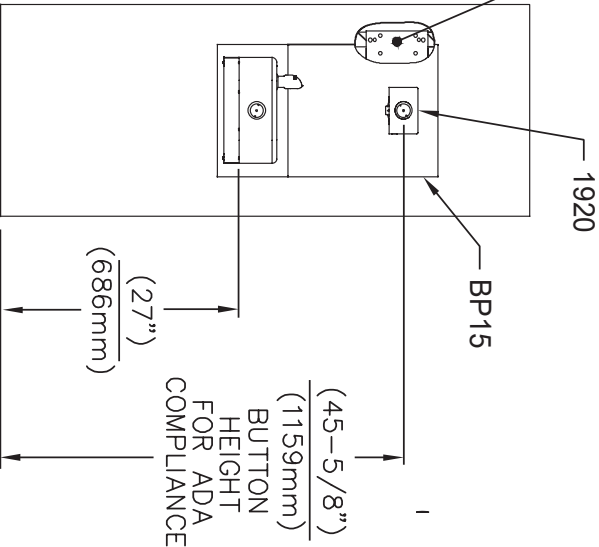
BACK VIEW

MOUNTING PLATE
(OPTIONAL, HAWS 6700)

		MODEL(S)	
ECN NO. REVISED PER BY:	ECN. 5215 JP	1107L	
DRAWN:	DATE: 10/25/08	CHKD:	GC
C. FENNER	DATE: 11/21/17	APPROVED:	SCALE: 1:1
1456 KLEPPE LANE SPARKS, NEVADA, 89431 (775) 359-4712 FAX (775) 359-7424 E-MAIL: HAWS@HAWS.CO.COM WEBSITE: WWW.HAWS.CO.COM		PART NUMBER 0002080232.D REVISION 15	

THIS DOCUMENT IS TRUE AND CORRECT AT TIME OF PUBLICATION. CONTINUED PRODUCT IMPROVEMENTS MAKE SPECIFICATIONS AND MEASUREMENTS SUBJECT TO CHANGE WITHOUT NOTICE.

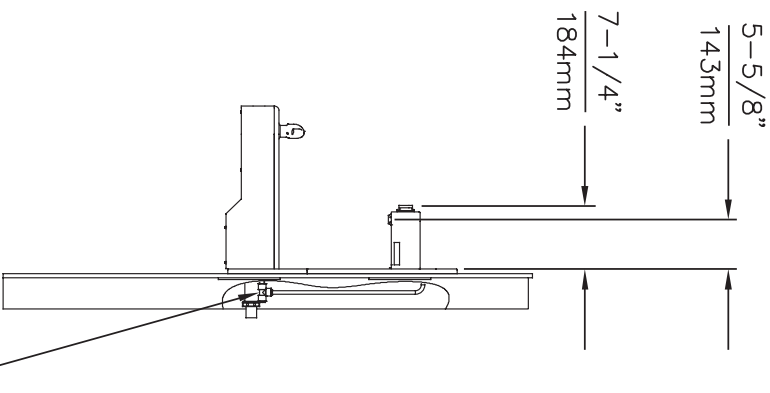
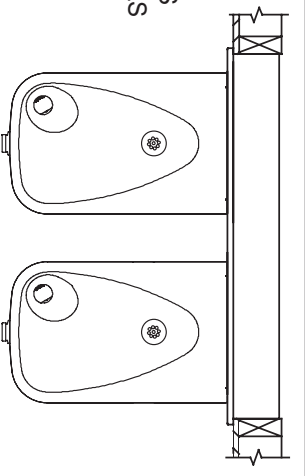
6700 MOUNTING PLATE
(BEHIND FINISH WALL)
- OR -
6700R RETROFIT PLATE
(ON TOP OF FINISH WALL)



INSTALLATION ABOVE HAWS 1107L

* IF YOUR FOUNTAIN IS THIS STYLE USE THESE DIMENSIONS

1. SEE SEPARATE INSTALLATION DRAWINGS FOR MOUNTING PLATES AND BACKPANELS
2. WHEN INSTALLING THIS UNIT, LOCAL, STATE OR FEDERAL CODES SHOULD BE ADHERED TO FOR INSTALLATION LOCATIONS, WASTE & SUPPLY REQUIREMENTS OTHER THAN SHOWN.



3/8" PUSH IN TEE
(CONNECT TO
FOUNTAIN SUPPLY)

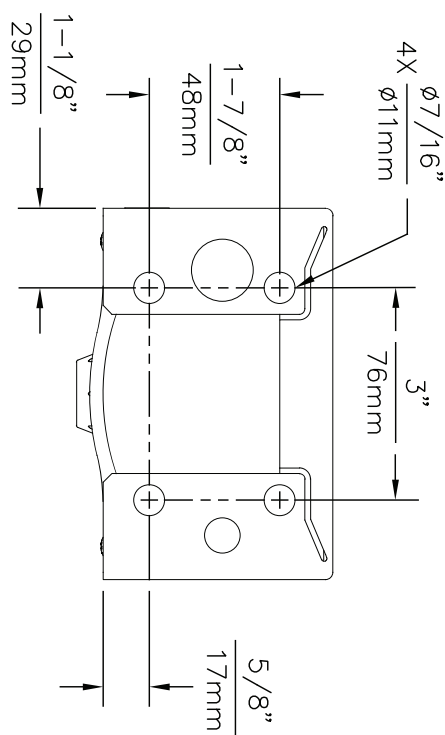
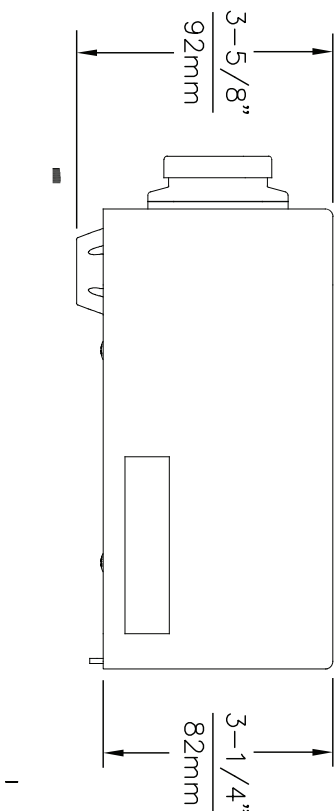


1455 KLEPPPE LANE
SPARKS, NEVADA 89431
(775) 359-4712 FAX (775) 359-7424
E-MAIL: HAWS@HAWS.CO.COM
WEBSITE: WWW.HAWS.CO.COM

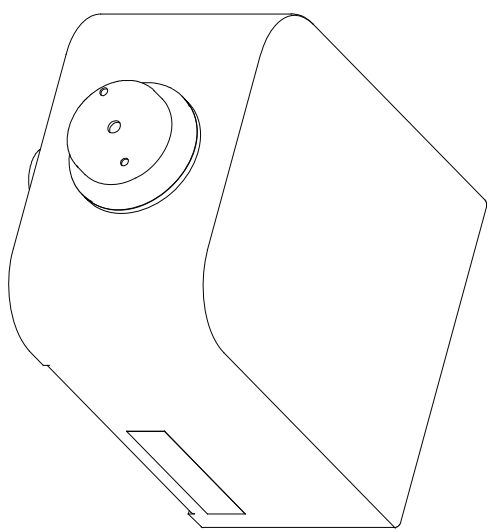
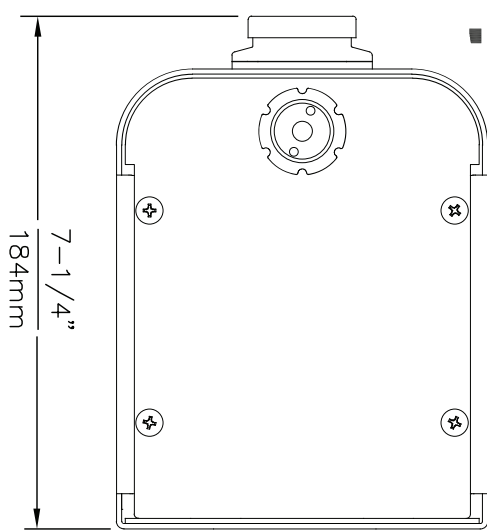
ECONO. REVISED PERBY:	MODEL(S)	MODEL 1107L
DRAWING:	EN. DATE:	CHGO
SCC:	DATE:	08/13/17
APPROVED:	SCALE:	NA
	DRAWING TYPE:	INSTALLATION
	SIZE:	A 1 SHEET 1 OF 2
	PART NUMBER:	1107L-20
	REVISION:	0A.1

©2017 Haws Corporation - All Rights Reserved. HAWS® and other trademarks used in these materials are the exclusive property of Haws Corporation.

THIS DOCUMENT IS TRUE AND CORRECT AT TIME OF PUBLICATION. CONTINUED PRODUCT IMPROVEMENTS MAKE SPECIFICATIONS AND MEASUREMENTS SUBJECT TO CHANGE WITHOUT NOTICE.



1920 MOUNTING HOLE LOCATIONS



NOTES:

1. SEE SEPERATE INSTALLATION DRAWINGS FOR MOUNTING PLATES AND BACKPANELS
2. WHEN INSTALLING THIS UNIT, LOCAL, STATE OR FEDERAL CODES SHOULD BE ADHERED TO FOR INSTALLATION LOCATIONS, WASTE & SUPPLY REQUIREMENTS OTHER THAN SHOWN.

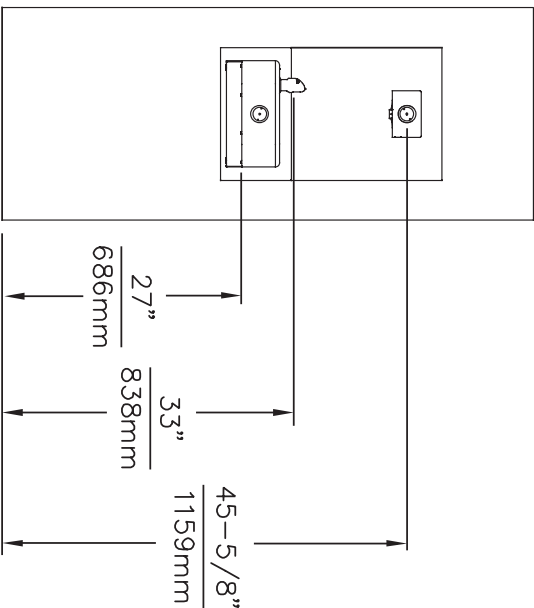


Haws

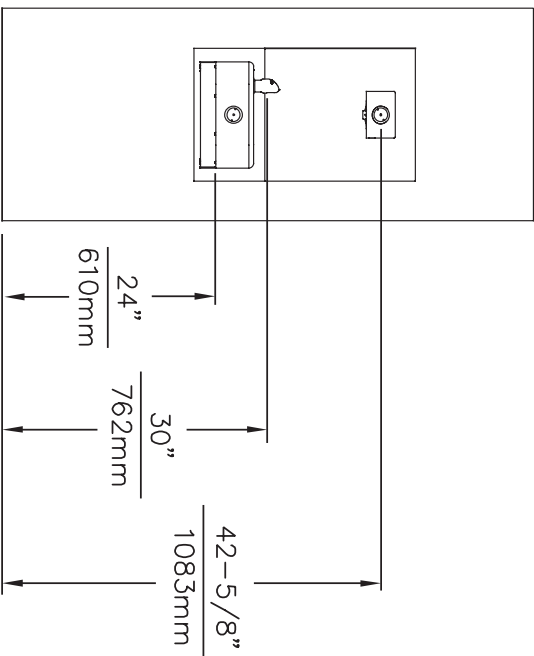
1435 KLEPPE LANE
 SPARKS, NEVADA 89431
 (775) 359-4712 FAX (775) 359-7424
 E-MAIL: HAWS@HAWSCO.COM
 WEBSITE: WWW.HAWSCO.COM

EQN NO	REVISED PER BY:	MODEL(S)	
5081	EQN/S172 AM		
DRWNS	CR/D	MODEL 1920/1920HPS/1920W	PART NUMBER
105/16	EV		0510000490.D
APPROVED:	DATE	SCALE	REVISION
FV	02/27/17	N/A	2
		DRAWINGS TYPE:	SHEET 1 OF 5
		INSTALLATION	

©2017 Haws Corporation - All Rights Reserved. HAWS® and other trademarks used in these materials are the exclusive property of Haws Corporation.



ADA ADULT ACCESSIBLE DIMENSIONS 1107L AND H1107.8
H1107.8 GRILL NOT SHOWN FOR CLARITY



ADA CHILD ACCESSIBLE DIMENSIONS 1107L AND H1107.8
H1107.8 GRILL NOT SHOWN FOR CLARITY

		Haws		1485 KLEPPE LANE	
EQUIPMENT		MODEL(S)		SPARKS, NEVADA 89431	
DRAWN	DATE	DATE	DATE	(775) 359-4712 FAX (775) 359-7424	
APPROVED	SCALE: N/A	INSTALLATION	SIZE: A	EMAIL: HAWS@HAWSCO.COM	
WITH MODEL 1920 BOTTLE FILLER		PART NUMBER		WEBSITE: WWW.HAWSCO.COM	
MODEL 1107L AND H1107.8		1107L-24		REVISION	
DRAWING TYPE		0A.1		SHEET 1 OF 1	