



## The economical, entry-level cart that slashes wasted motion and pays for itself in no time

The entry-level EcoCart mobile powered workstation is designed to provide true mobility within a facility, while eliminating unnecessary movement, touches and transportation wastes. This can result in improved dock to stock cycle times in receiving and on-time shipments in your shipping areas.

This lightweight, compact unit is ideal for powering a laptop, barcode printer and scanner for 8+ hours at time.

## Outstanding benefits

- › Reduce labor by as much as \$10K per worker
- › Increase receipts by as much as 60%
- › Reduce improperly labeled products
- › Reduce inaccurate inventories
- › Process goods directly at the pallet or on the dock
- › See your ROI in less than three months



# Newcastle EC Series Powered Industrial Carts



EC Series with PowerSwap Nucleus® MINI power system



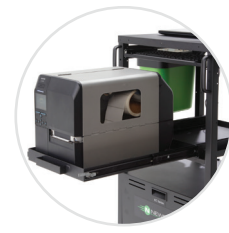
EC Series with SLA power system



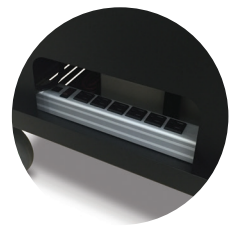
Simply swap with a fully charged pack in seconds



Easily integrate a wide variety of accessories



Optional slide-out keyboard tray



Easy-access power strip (for SLA versions)

<b>Height Adjustable:</b>	Middle shelf adjustable from 20-32" (508-813 mm)		
<b>Shelf:</b>	(1 standard top shelf) 21.75" wide x 20" deep metal (552 x 508 mm) (optional middle shelf) 20" wide x 20" deep metal (508 x 508 mm)		
<b>Capacity:</b>	60 lbs (27 kg) per shelf evenly distributed		
<b>Casters:</b>	5 x 2" (127 x 51 mm) rubber wheels, front fixed, rear locking swivel		
<b>Color &amp; Construction:</b>	Black powder coat & steel		
<b>Model Configurations:</b>	EC102NUM*	EC350	EC380
<b>Typical Devices Powered for 8 Hour Shift:</b>	Laptop or small thermal printer & scanner	Laptop/thin client, small thermal printer & scanner	Laptop/thin client, LCD, small or mid-range thermal printer & scanner
<b>Battery Type:</b>	Lithium Iron Phosphate	Sealed Lead Acid	
<b>Continuous Output Power (W):</b>	120	450	450
<b>Surge Power:</b>	300	900	900
<b>Battery Bank (Wh):</b>	230	480	1200
<b>Charge Time (Hrs):</b>	2.5	4	9
<b>Operating Temp (F):</b>	50-104°	32-95°	
<b>Weight:</b>	70 lbs (32 kg)	110 lbs. (50 kg)	140 lbs. (64 kg)
<b>Dimensions:</b>	20" long x 21.75" wide x 43" high (508 x 552 x 1092 mm)		

\*Requires purchase of (1 or 2) PSNU1.8M battery packs and (1) PWC1M PowerCharge MINI station.