

# EcoCart Series Assembly Manual



## Installation for EcoCart Series



### Standard Contents:

- Cart (assembled)
- Battery & hardware
- Wastebasket and holder



### Optional Accessories:

Will either be installed on cart or shipped separately in box with cart.

\*Some accessories may be placed in power cabinet or trash can for shipping purposes.

### Tools Required:

- For EC380: (2) 1/2" wrenches
- For EC350: (2) 10mm wrenches



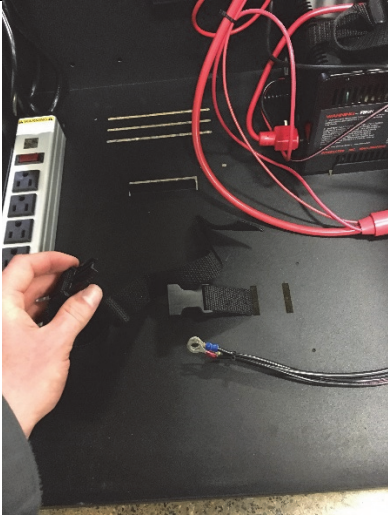
**1.** Open power box by loosening thumbscrews



**2.** Remove power cabinet cover



**3.** Remove battery & hardware (includes (2) bolts, (2) nuts, (4) flat washers and (2) lock washers) from cardboard box



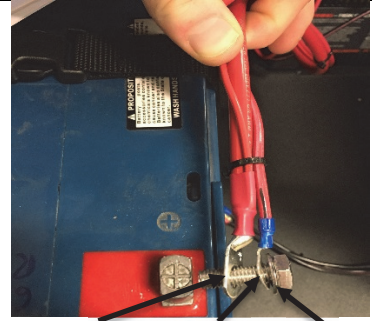
**4.** Unclip nylon battery strap & open to allow placement of battery



**5.** Carefully lift battery by its handles and place in cabinet

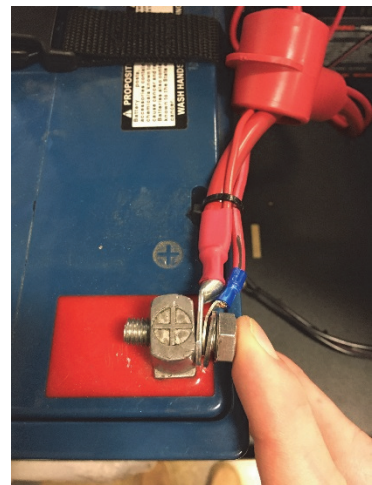


**6.** Clip nylon battery strap to secure battery



Red inverter wire Red charger wire Flat washer

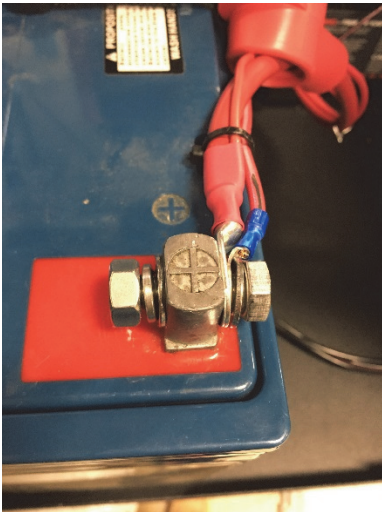
**7.** Place washer & wires on battery bolt (in order shown) for red positive (+) battery



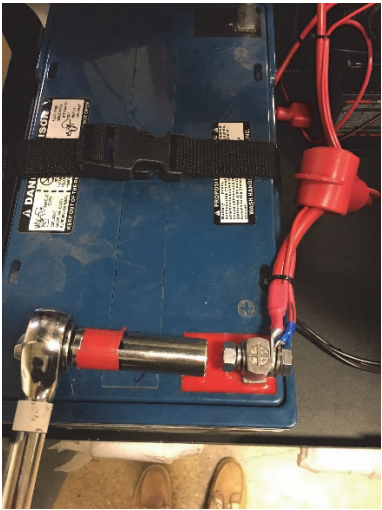
**8.** Insert bolt through red positive (+) battery terminal



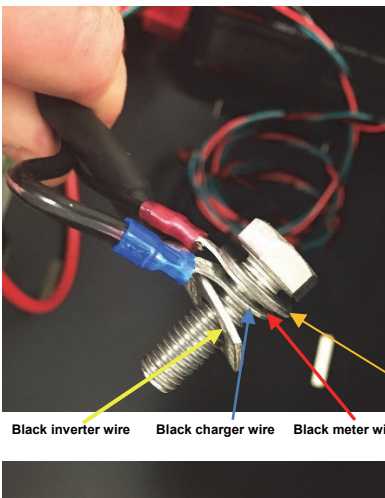
**9.** Retrieve nut, lock washer and flat washer (as shown above)



**10.** Place flat washer, lock washer, then nut onto bolt and tighten



**11.** Securely tighten nut with wrenches; then pull red rubber boot over terminal.

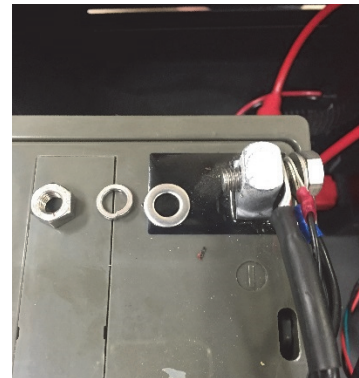


**12.** For black negative (-) battery connection, place washer and wires on battery bolt (as shown)

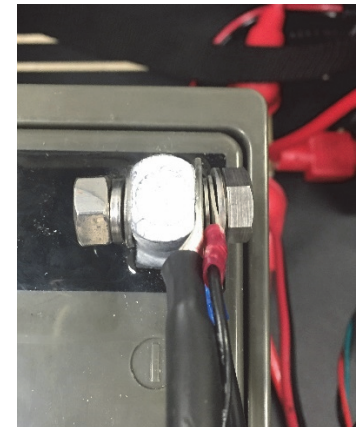
Black inverter wire    Black charger wire    Black meter wire    Flat washer



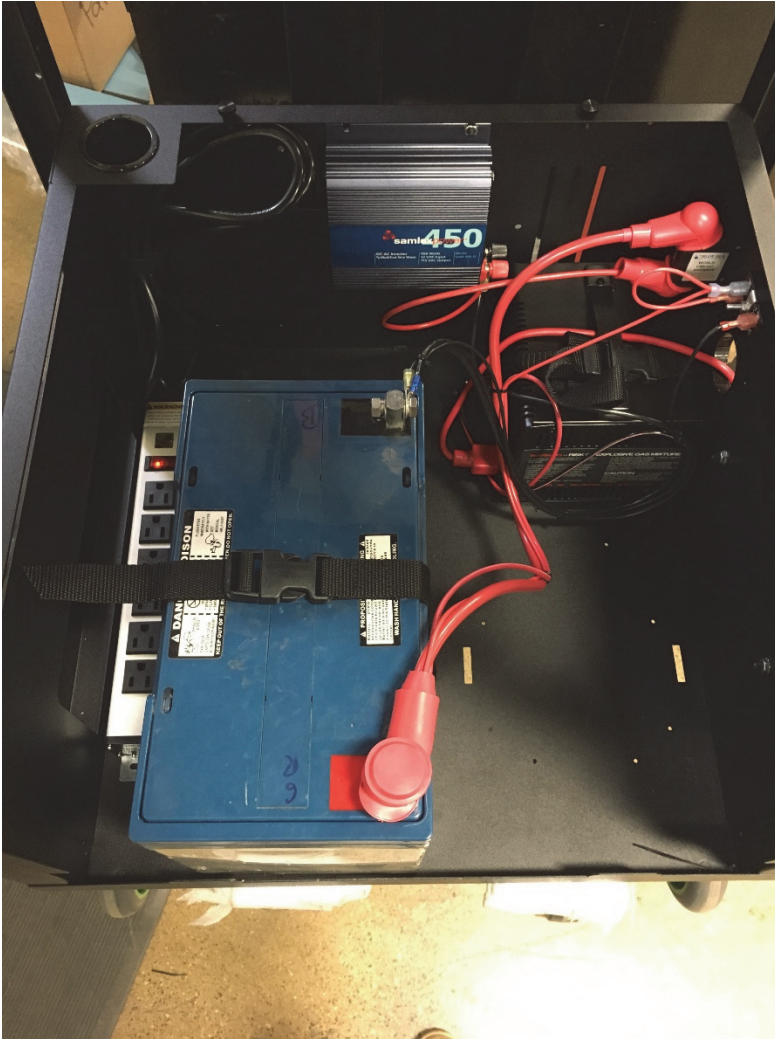
**13.** Insert bolt through black negative (-) battery terminal. **NOTE:** Sparking is normal for the first connection.



**14.** Retrieve nut, lock washer and flat washer (as shown above)



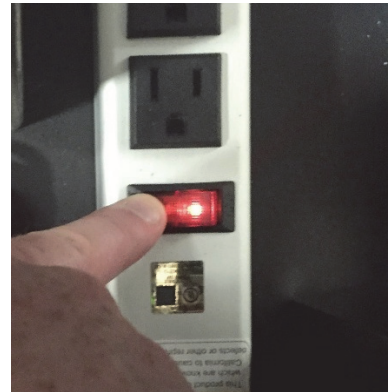
**15.** Place flat washer, lock washer, then nut onto bolt and tighten with wrenches



**16.** Make sure all fittings are tight and battery is strapped down in the cabinet. Test unit before placing battery cover on. (See steps 17 & 18)



- 17.**
- Turn ON (I) the red inverter switch on blue blue inverter inside battery box
  - Turn ON (I) white circuit breaker switch on right exterior of cart.



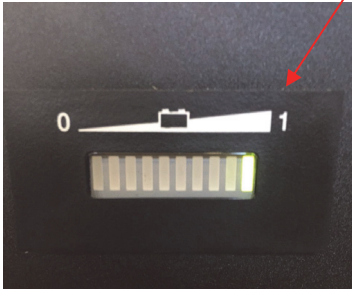
**18.** Turn power strip on. Light should turn red.



**19.** Place battery cover on and securely tighten thumb screws

## Operating Tips:

1. Charge your battery before using it to ensure it is fully charged. Turn off the unit, and simply plug the charger cord (located on side of unit) into a standard wall unit.
2. Monitor the battery status meter on the cart.



3. Batteries should not be discharged below 11.5 volts as this will shorten the life of the battery.

LED Battery Meter Light Indicators:

Voltage	11.2	11.4	11.5	11.7	11.8	12.0	12.1	12.3	12.4	12.6
Light#	1	2	3	4	5	6	7	8	9	10
Color	Red Blinks	Red Blinks	Yellow	Yellow	Yellow	Green	Green	Green	Green	Green

4. Batteries SHOULD NOT be stored in a discharged state for more than 1 or 2 days. They should be charged as soon as possible after each use (otherwise it will void the warranty). If a battery is left in a discharged state for a period of time it will damage battery and it may no longer take a charge.

5. Do not use cart when charging. Turn unit to the OFF position using the white switch on right side of cart, then plug into standard wall unit to charge

6. When the cart is not in use, the system charger can be plugged into a wall outlet to ensure the battery remains in optimal state. Turn the white switch, on the right side of the cart, to the OFF position.

7. Avoid exposing battery to heat, service life is shortened at ambient temperatures above 85F.

Accessory assembly manual can be downloaded at:

[www.newcastlesys.com/accessory-assembly](http://www.newcastlesys.com/accessory-assembly)



**Be sure to charge your cart after every use. Simply plug cart into wall outlet.**

Charging system may be plugged in indefinitely and will NOT damage the battery.