

Interstate 50®

SELF SEALING, FAST RECOAT, VARIABLE UHS FLOOR FINISH

PRODUCT DESCRIPTION:

Interstate 50® is specially formulated to provide optimal performance with high speed and ultra high speed programs but works well with any maintenance system. The high solid acrylic blend provides exceptional durability, gloss and black heel resistance.

FEATURES:

Balance of Performance:

Interstate 50®'s proven performance on initial laydown, repairability and removability makes floor care easy.

Repairability:

Maintaining a high appearance level in the toughest traffic conditions is a cinch. Just clean and burnish and **Interstate 50®** keeps coming back.

Detergent Resistance:

Interstate 50® stands up to repeated autoscrubbing. It takes a lot of abuse before it needs a recoat or strip out.

Removability:

Even after repeated scrub and recoat cycles, **Interstate 50®** is easily removed from the floor. **Interstate 50®** takes the risk out of floor care and controls your floor care cost.

PRODUCT SPECIFICATIONS:

pH	9.0 ± 0.3
Appearance	Off White Liquid
Fragrance	Polymeric
Freezing Point	About 32°F
% Total Solids	26.0
% Non-Volatile Solids	20.5
Boiling Point	212°F
Solubility in Water	Dispersible
Flash Point	205°F
Coverage	1800 to 2200 sq. ft. per gallon
	(may vary due to differences in porosity of the surface)

Slip Resistance: Static coefficient of friction (James Machine) meets or exceeds 0.5 as determined by ASTM D2047-82.

INGREDIENTS:

Water	7732-18-5
Styrene acrylic polymers	Mixture
Diethylene glycol monoethyl ether	111-90-0
Tri butoxyethyl phosphate	78-51-3
Polypropylene emulsion	Mixture

DILUTIONS	HEALTH	FLAMMABILITY	REACTIVITY
CONCENTRATE	NFPA 0 HMIS	NFPA 0 HMIS	NFPA 0 HMIS
CONCENTRAR	SALUD	INFLAMABILIDAD	REACTIVIDAD

0	1	2	3	4
Minimal	Slight	Moderate	Serious	Severe
Mínimo	Mínimo	Moderar	Grave	Drástico

DATA SHEET

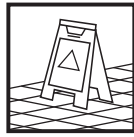
Interstate 50[®] SELF SEALING, FAST RECOAT, VARIABLE UHS FLOOR FINISH

DIRECTIONS

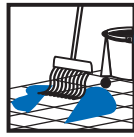
USE INFORMATION

Before applying **Interstate 50[®]** remove old sealer/finish using an appropriate Franklin stripper following label directions. For use on all resilient floors and for sealed wood, cork, terrazzo and concrete floors.

INITIAL APPLICATION



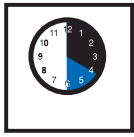
CAUTION



1. REMOVE



2. APPLY

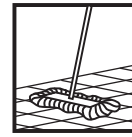


3. DRY

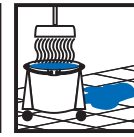


4. APPLY

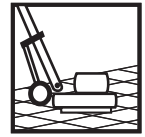
MAINTENANCE



1. DUST MOP



2. MOP



3. BURNISH

INITIAL APPLICATION

1. **REMOVE** old sealer/finish using a Franklin stripper and following label directions.
2. **APPLY** a thin coat of **Interstate 50[®]** using a clean finish mop and a bucket.
3. **DRY:** Allow 20-30 minutes drying time.
4. **APPLY** a total of 4 coats. Allow adequate drying time between coats.

MAINTENANCE

1. **DUST MOP** the floor. Remove gum, labels, and other attached soil deposits with a long-handled scraper or putty knife.
2. **DAMP MOP OR AUTOSCRUB** using a Franklin cleaner and following the label directions.
3. **BURNISH** the floor after cleaning with an ultra high speed or high speed machine using the appropriate pad.

If the floor begins to look worn, an occasional scrub and recoat will decrease the need for frequent stripping.

WARNING

May cause mild eye and skin irritation.

Prevention

Observe good industrial hygiene practices.

Response

Wash hands after handling.

Storage

Store away from incompatible materials.

Disposal

Dispose of waste and residues in accordance with local authority requirements.

KEEP OUT OF REACH OF CHILDREN.

Franklin Cleaning Technology

One Fuller Way
Great Bend, KS 67530
United States
CHEMTREC (800) 424-9300
Emergency (620) 792-1711
24 hour Emergency (800) 424-9300
www.fullercommercial.com

PERSONAL PROTECTION:

Respiratory Protection: Not needed in normal use of this product.

Ventilation: Use with adequate ventilation.

Eye Protection: Safety glasses are optional.

Protective Gloves: Protective gloves are optional.

Other Protective Clothing or

Equipment: Wear clothing as necessary to prevent skin contact.

TRANSPORTATION

INFORMATION:

U.S. DOT - Proper Shipping Name: Not regulated by DOT.

Marine Pollutant: No