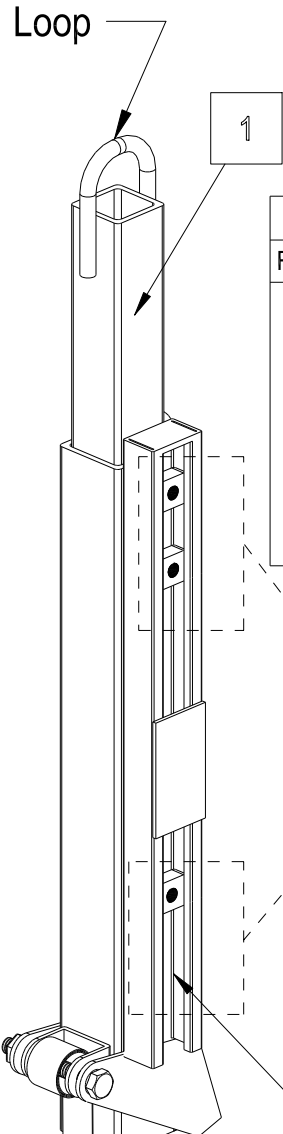


Steel Ladder Safety Post Assembly Instruction

Contents		
Ref.	Qty.	Description
1	1	Safety Post
H1	4	Spring Nut
H2	2	Clamp Bracket
H3	4	Plain Washer
H4	4	M10 x 1.5 x 50mm Lg. Hex Shoulder Bolt

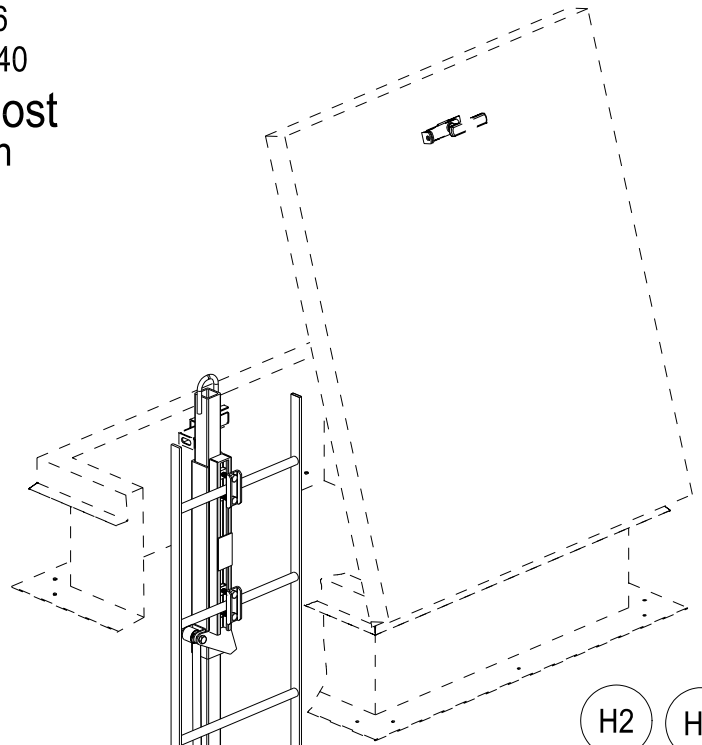


Insert spring nut into assembly post then rotate half turn clockwise

1

⚠ WARNING ⚠

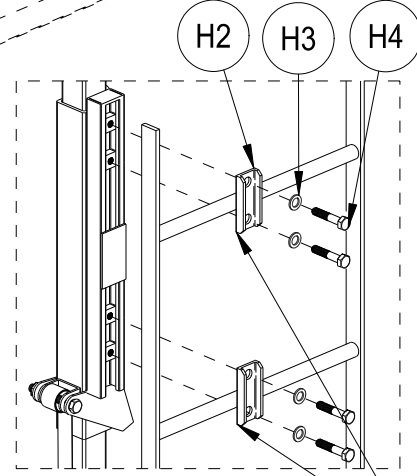
- Assembly and installation of equipment should be performed by 2 people.
- Do not use if any parts of the safety post assembly is broken or damaged.
- Inspect and tighten hardware every six months.
- If any parts are missing, damage or worn, stop use of the product until repairs are made using factory authorised parts. Failure to follow these warning could result in serious injury.
- Keep fingers away from scissor supports
- Do not attach anything to the loop of this product



2

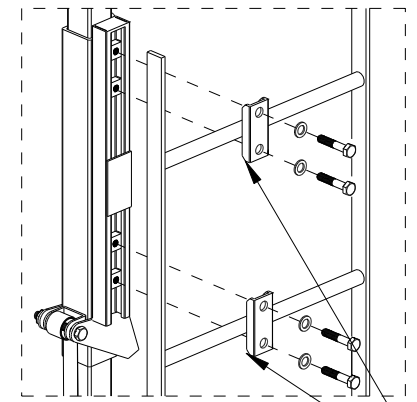
NOTE:

For 1 1/4 (32mm) diameter ladder rung, attach brackets with flange away from ladder as shown.



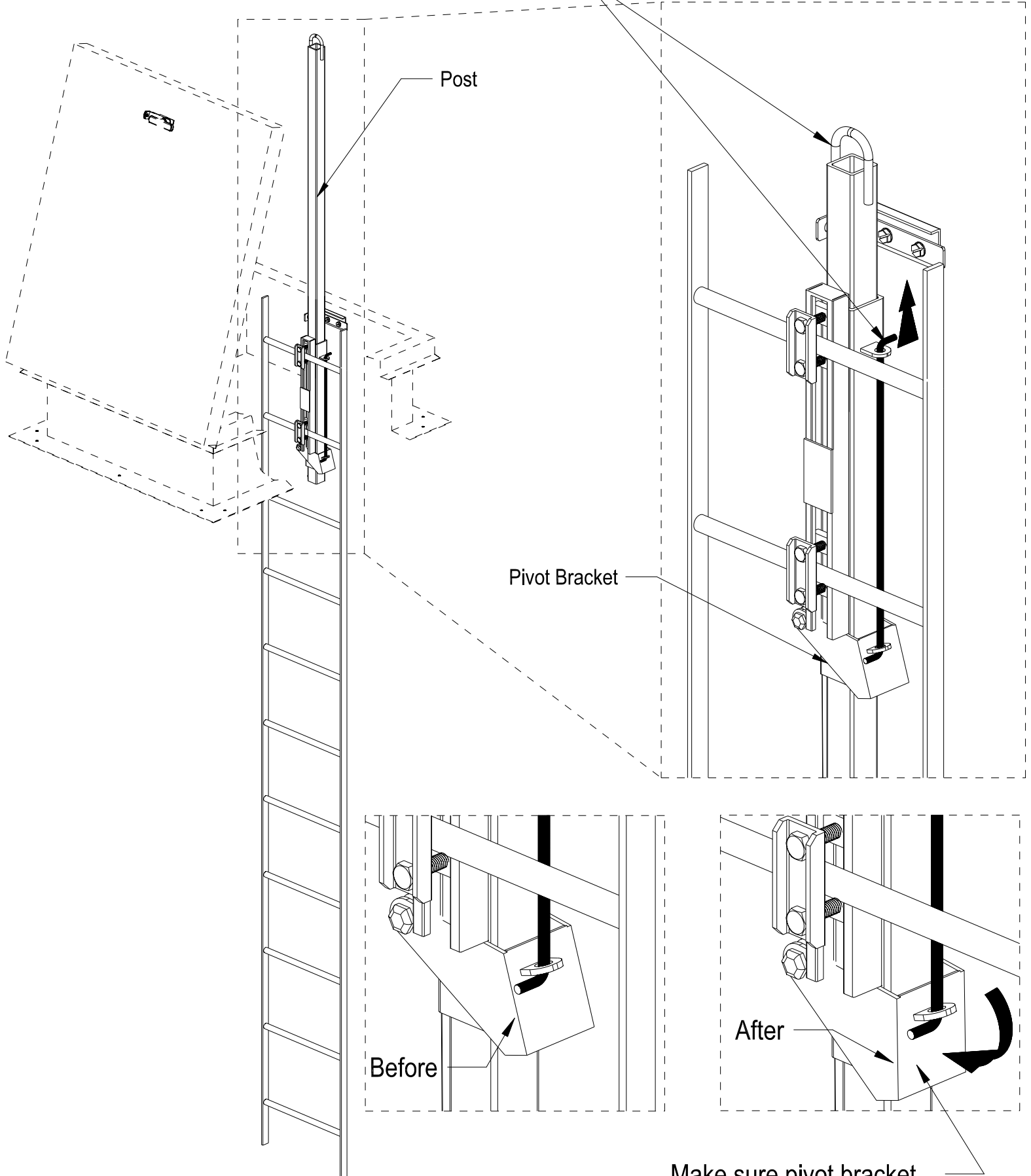
NOTE:

For 3/4 (19mm) diameter ladder rung, attach brackets with flange towardd ladder rungs as shown.



TO LOWER POST

Pull up release rod and gently push down on post



Make sure pivot bracket are locked in place before using this product.