

**User's manual**
**Manual del usuario**
**Manuel de l'utilisateur**
**Customer Service**  
 US: 1-800-645-2986

**Servicio de atención al Cliente**  
 US: 1-800-645-2986

**Service à la clientèle**  
 Canada: 888-645-2986

# In-Ground Mount Steel Bench With Backrest, for 48" / 72" / 96"

Component Models: 436CP54



## Parts List

Ref.	Qty.	Description
1	2	Bench
2	1	Right Leg
3	1	Left Leg
4	2	Leg Support
5	4	Steel Bar
H1	10	M8 x 25 mm Hex Bolt
H2	1	M8 x 35 mm Hex Bolt
H3	22	Washer
H4	11	M8 Nylon Lock Nut



### Warning

- Assembly and installation of equipment should be performed by 2 people.
- Workers should use O.S.H.A. approved safety and lifting equipment.



### Warning

- Ensure that the bench is installed on a level surface.
- Ensure surface is of a strong material, preferably concrete.
- Use proper mounting hardware.



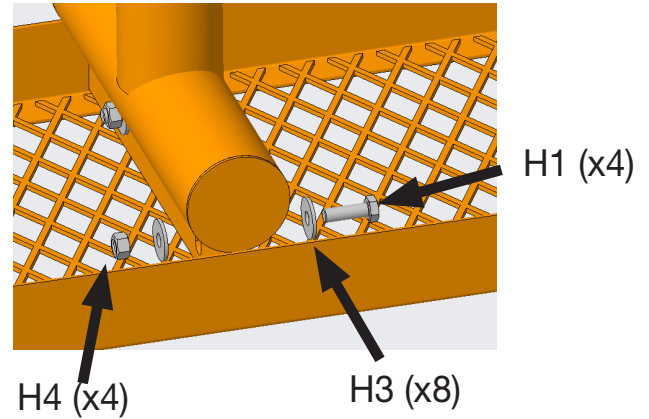
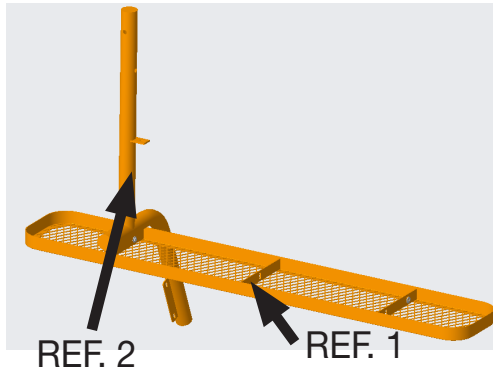
### Warning

- Do not climb on, under or through tables and benches.
- Two people are required to move tables and benches.
- Do not use if any parts are damaged.
- Inspect and tighten hardware every six months.
- Replace rusted hardware and damaged components.

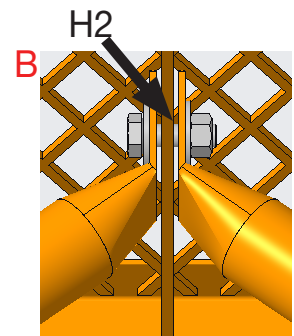
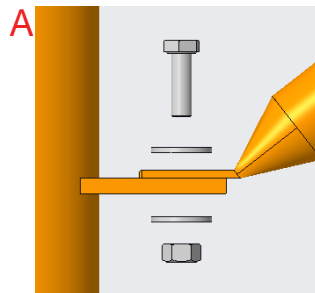
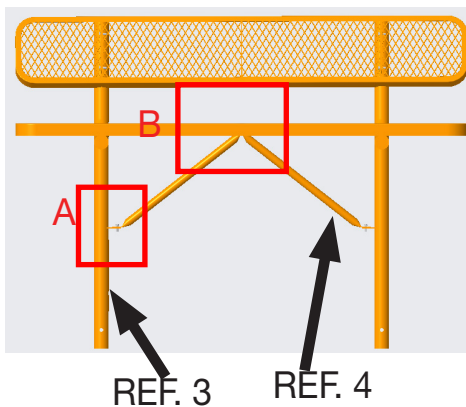
# In-Ground Steel Bench With Backrest

## 1 Assembly Instructions

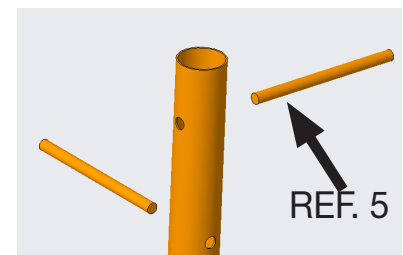
1. Attach both Legs to the seat bench and the backrest bench, using the hardware provided. Use images below as reference.



2. Attach leg supports to both legs and bench top (3 points) with the hardware provided. Use images below as reference.



3. Insert 2 steel bars (Ref.5) through the bottom of each leg. Steel bars must be symmetrically placed in order to function adequately during in-ground installation. Steel bar must remain symmetric while in leg.



## 2 In-Ground Installation

1. Dig a hole 24" deep and 9~10" in diameter.
2. Layer the bottom with 6" of gravel. Ensure gravel is well packed.
3. Mix concrete using proper sand/cement ratio.
4. Insert legs to base and apply concrete to its surroundings.
5. Ensure steel bars stay symmetric while concrete is poured.
6. Use level to ensure level installment.
7. Allow concrete to cure completely.