



User Manual

Model No. 641689

Self-Propelled Electric Lift Table



AVAILABLE EXCLUSIVELY AT GLOBAL INDUSTRIAL
GLOBALINDUSTRIAL.COM
US: 1-800-645-2986
Canada: 888-645-2986

Table of Contents

- SAFETY AND OPERATION 3**
 - OPERATOR REQUIREMENTS 3**
 - WARNING 3**
 - FORBIDDEN USE BY UNAUTHORIZED PERSONS 3**
 - REPAIR 3**
 - DANGER AREA 3**
 - DRIVING AND OPERATING CONDITIONS 3**
- PRODUCT SPECIFICATIONS 4**
- PART BREAKDOWN 4**
- OPERATING THE LIFT TABLE 5**
 - LIFTING THE PLATFORM 5**
 - LOWERING THE PLATFORM 5**
 - MOVING THE LIFT TABLE 5**
- CHARGING THE BATTERY 6**
- DAILY INSPECTION 6**
- REGULAR INSPECTION 6**
- TROUBLESHOOTING 7**
- DIAGRAMS 8**
 - HYDRAULIC DIAGRAM 8**
- WIRING (ELECTRICAL) DIAGRAM 8**
- EXPLODED VIEWS + RP PARTS 9**
 - HYDRAULIC POWER PACK 10**
 - REPLACEMENT PARTS 11**

Operation and Service Manual

READ THIS OPERATION MANUAL COMPLETELY BEFORE USING THIS PRODUCT. THOROUGHLY UNDERSTAND AND FOLLOW ALL SAFETY INSTRUCTIONS. IF THIS MANUAL IS LOST, PLEASE GO ON THE GLOBAL INDUSTRIAL WEBSITE OR CONTACT A GLOBAL INDUSTRIAL REPRESENTATIVE FOR A NEW COPY. IF THE WARNING/CAUTION DECAL ON THE UNIT IS LOST, PLEASE CONTACT A GLOBAL INDUSTRIAL REP FOR A NEW ONE.

NOTE:

WARNING indicates a hazardous situation that could result in serious injury or death.
CAUTION indicates a situation that could result in minor injury or property damage.

WARNING:



Never LIFT or LOWER the self-propelled electric lift table when driving.

Set the lift table platform to the lowest position before driving.

1 SAFETY AND OPERATION

OPERATOR REQUIREMENTS

The operator must fully understand their rights, obligations, and responsibilities and must have received proper training on the operation of the self-propelled electric lift table. Operators must follow all procedures in this manual and wear appropriate personal protective equipment (PPE), including but not limited to safety goggles and steel-toe footwear.

WARNING

1. Never lift or lower the platform while the lift table is moving.
2. Lower the platform to its lowest position before driving.
3. The operator is responsible for preventing unauthorized use.
4. The lift table is strictly prohibited from lifting or transporting people.

FORBIDDEN USE BY UNAUTHORIZED PERSONS

In the event of a failure or fault, notify a supervisor immediately. If the lift table cannot be operated safely (for example, due to worn wheels or brake failure), stop operation immediately until repairs are completed.

REPAIR

Do not modify any part of the lift table without written authorization from Global Industrial. Repairs must be performed by trained and authorized personnel only. Use only replacement parts approved or supplied by Global Industrial. Dispose of oils and waste materials in accordance with environmental regulations.



To ensure the safety and reliability of the lift table, only replacement parts provided by Global Industrial or approved for use by Global Industrial should be used. Any parts replaced or waste product, such as oils and fuels, must be disposed according to related environmental protection regulations.

DANGER AREA

The danger area includes the space surrounding the lift table and lifting mechanism during operation. Unauthorized persons must be kept clear of this area at all times.

CAUTION: Keep unauthorized personnel away from the lift table during operation.

DRIVING AND OPERATING CONDITIONS

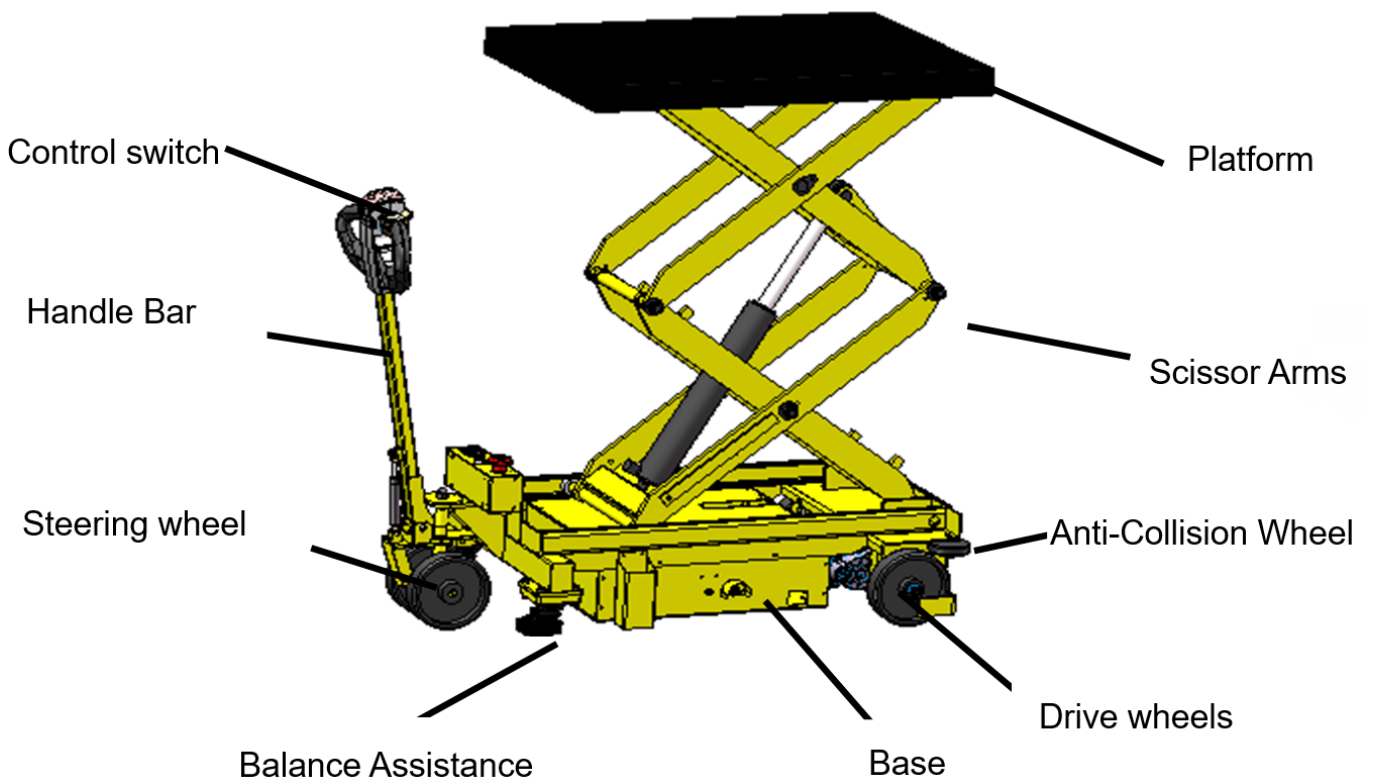
1. Do not drive the lift table on public roads.
2. Maintain a safe distance from other vehicles.
3. Reduce speed when turning, entering doorways, operating in narrow aisles, or when visibility is limited.
4. Avoid sudden braking, sharp turns, and overtaking when vision is obstructed.
5. Do not operate on slopes exceeding the rated gradient. Never turn, park, or perform U-turns on a slope.
6. Keep the platform lowered when driving or parked.

2 PRODUCT SPECIFICATIONS

PROPERTY	SPECIFICATION
Capacity (lbs)	3000
Table Size (L x W) (in)	40 x 26.7
Platform Height (Min.Max) (in)	20.5 72.8
Driving motor (V/kW)	24 1.2
Lifting motor (V/kW)	24 0.8
Maximum drive speed (mph)	2.2
Lifting cycle	80
Max lifting/lowering time (sec)	15-25 20-30
Battery (V/Ah)	24 50
Charger (V/A)	24 8
Driving wheel diameter (in)	8
Overall size (L x W x H) (in)	54.3 x 29 x 46
Net Weight (lbs)	694

Meets ANSI MH29.1 Standards

3 PART BREAKDOWN



4 OPERATING THE LIFT TABLE

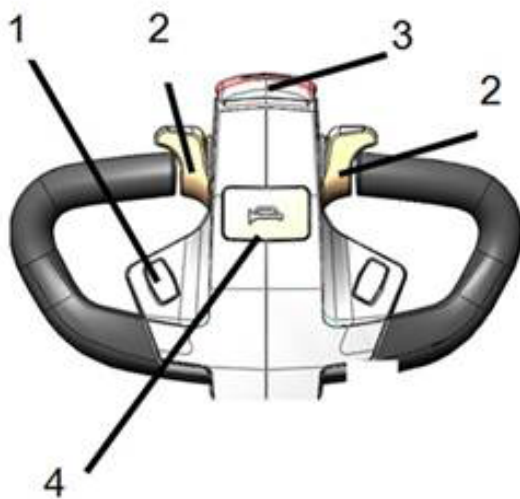
LIFTING THE PLATFORM

CAUTION:

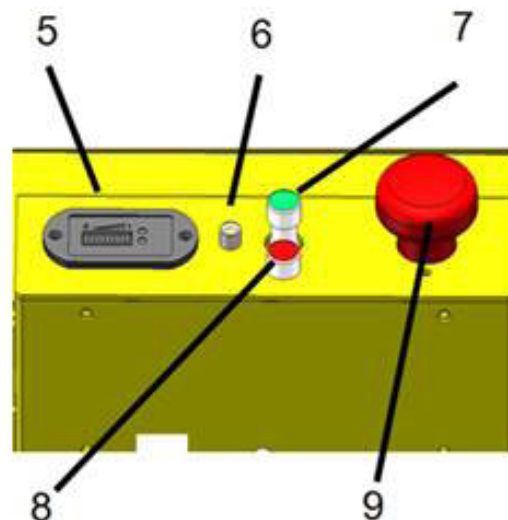
1. Do not overload the lift table. Do not exceed the rated capacity.
2. Prolonged, continuous usage of lift table without breaks may damage the hydraulic power pack.
3. Immediately stop operation of the lift table if temperature of hydraulic oil is too high (see below).

NOTE: During normal operation, the temperature may be approximately assessed by lightly touching the hydraulic pump housing after the unit has been shut down. If the surface does not feel hot to the touch, the temperature is considered within an acceptable range. If the surface feels noticeably hot, the hydraulic oil temperature is excessively high and may present a risk of injury or equipment damage. Under such conditions, discontinue use of the lift table immediately and allow the unit to cool to a safe temperature before resuming operation.

Press the "UP" button (1) to raise the lift table platform.



1. "UP"/"DOWN" button
2. Forward/Backward switch
3. Emergency "Belly" button
4. Horn button
5. Battery level indicator



6. Power indicator
7. Charging indicator (green)
8. Charging indicator (red)
9. On/off + emergency stop button

LOWERING THE PLATFORM

Push the "Down" button (1).

CAUTION: Always lower the table slowly. Do not abruptly lower the lift table or suddenly stop the descent. The load impact may damage the lift table.

MOVING THE LIFT TABLE

Ensure that the load is stable and that the lift table platform is in its lowest position. Then move the lift table by turning the forward/backward switch (2).

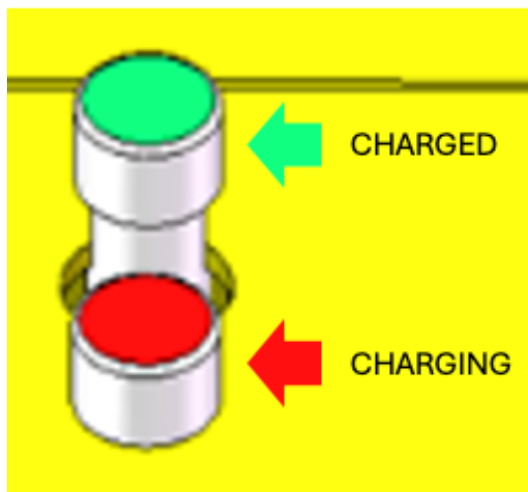
WARNING: Do not move the lift table on a slope when transporting a load.

CAUTION: When transporting a load, keep a lookout for its condition. If it becomes unstable, immediately stop the lift table and stabilize the load.

5 CHARGING THE BATTERY

To charge the battery:

1. Turn off the lift table using the on/off emergency stop button (9).
2. Connect the charger cable to the lift table.
3. Plug into a suitable power outlet.
4. Charging indicators will display status. Full charge is achieved in approximately 10 hours.



6 DAILY INSPECTION

Performing a daily inspection before use is crucial for finding any malfunctions or faults on the lift table and preventing possible injuries. Check for the following:

1. Check for scratches, bends, and cracks on the lift table.
2. Check that the wheels rotate smoothly.
3. Check for any oil leakage.
4. Check for any vertical creep of the lift table.
5. Check the brake function.
6. Check that all nuts and bolts are firmly tightened.
7. Check that all the electrical components — including the battery indicator, horn, and brake system—work properly.

WARNING: DO NOT USE LIFT TABLE IF ANY MALFUNCTION OR FAULTS ARE FOUND.

7 REGULAR INSPECTION

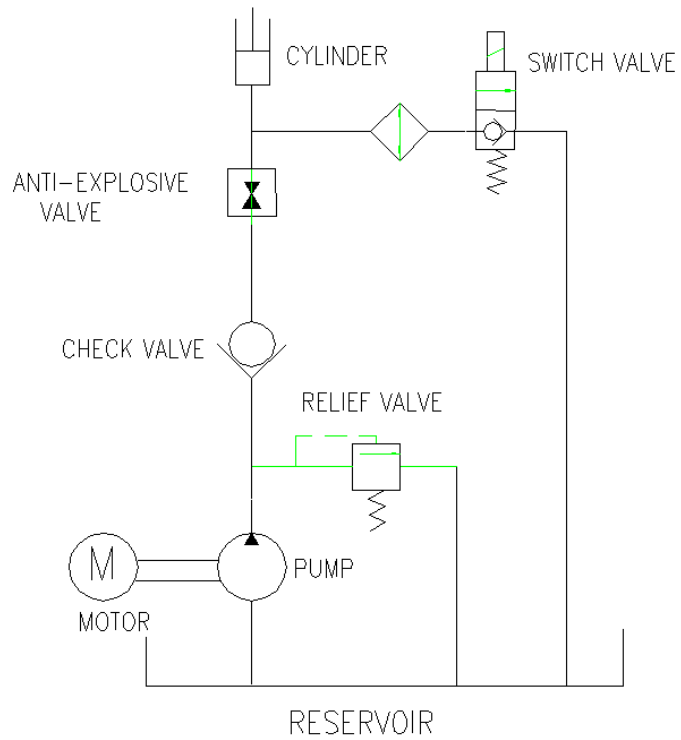
Perform the following inspections regularly:

1. Check the items listed in the daily inspection above. (Daily)
2. Lubricate all the roller guides and grease nipples with grease or lubricant. (Monthly)
3. Lubricate all pivoting points and axles. (Every 6 months)
4. Replace the hydraulic oil for the first time. (After the first 10 working hours)
5. Replace the hydraulic oil periodically. (Every 12 months)

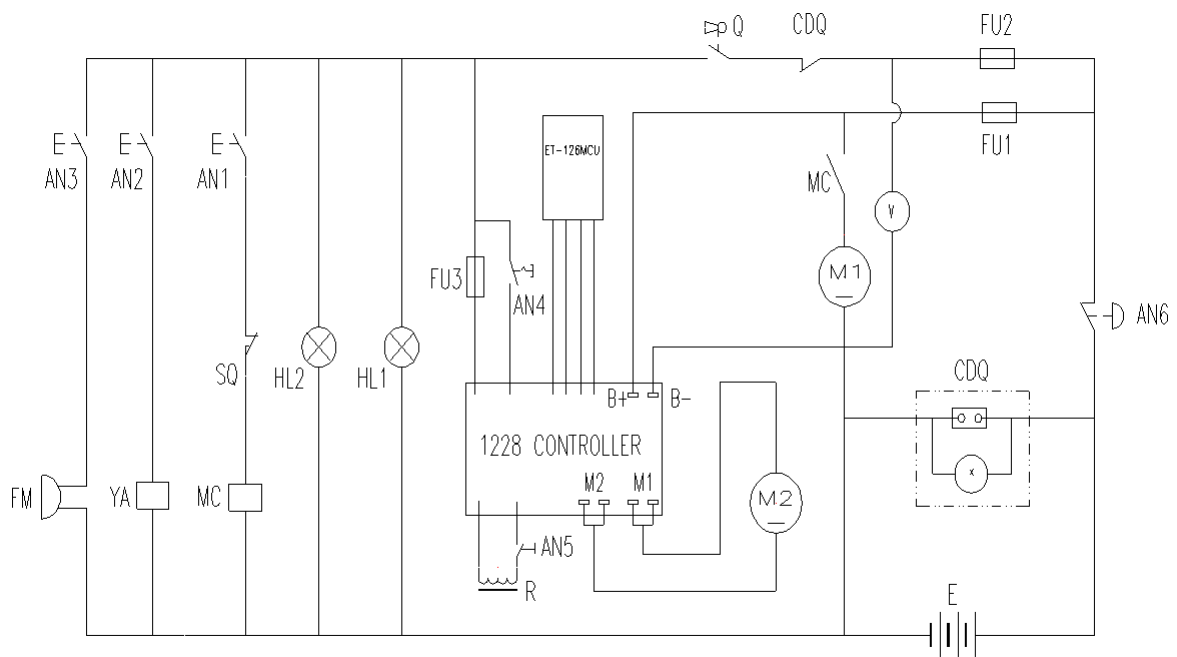
8 TROUBLESHOOTING

ISSUE	CAUSE	SOLUTION
Platform does not rise and motor is not running.	Faulty wiring.	Check the wiring. Refer to the wiring diagram.
	Battery socket is disconnected.	Connect the battery socket.
	Battery charge is insufficient.	Charge the battery.
Platform does not rise and motor is running.	Faulty relief valve adjustment.	Adjust the relief valve.
	Faulty hydraulic pump.	Replace the pump power pack
	Hydraulic oil shortage.	Add more hydraulic oil.
Vertical creep (of platform)	Oil leakage in power pack.	Replace lowering valve.
	Oil leakage in hydraulic circuit.	Refer to hydraulic circuit diagram and repair the leak.
Oil leakage from cylinder	Faulty seal.	Replace seal.
Oil leakage from piping or joint	Insufficient tightening or faulty seal.	Tighten the joint or replace seal.
Oil leakage from valves	Too much oil.	Reduce oil quantity in system.

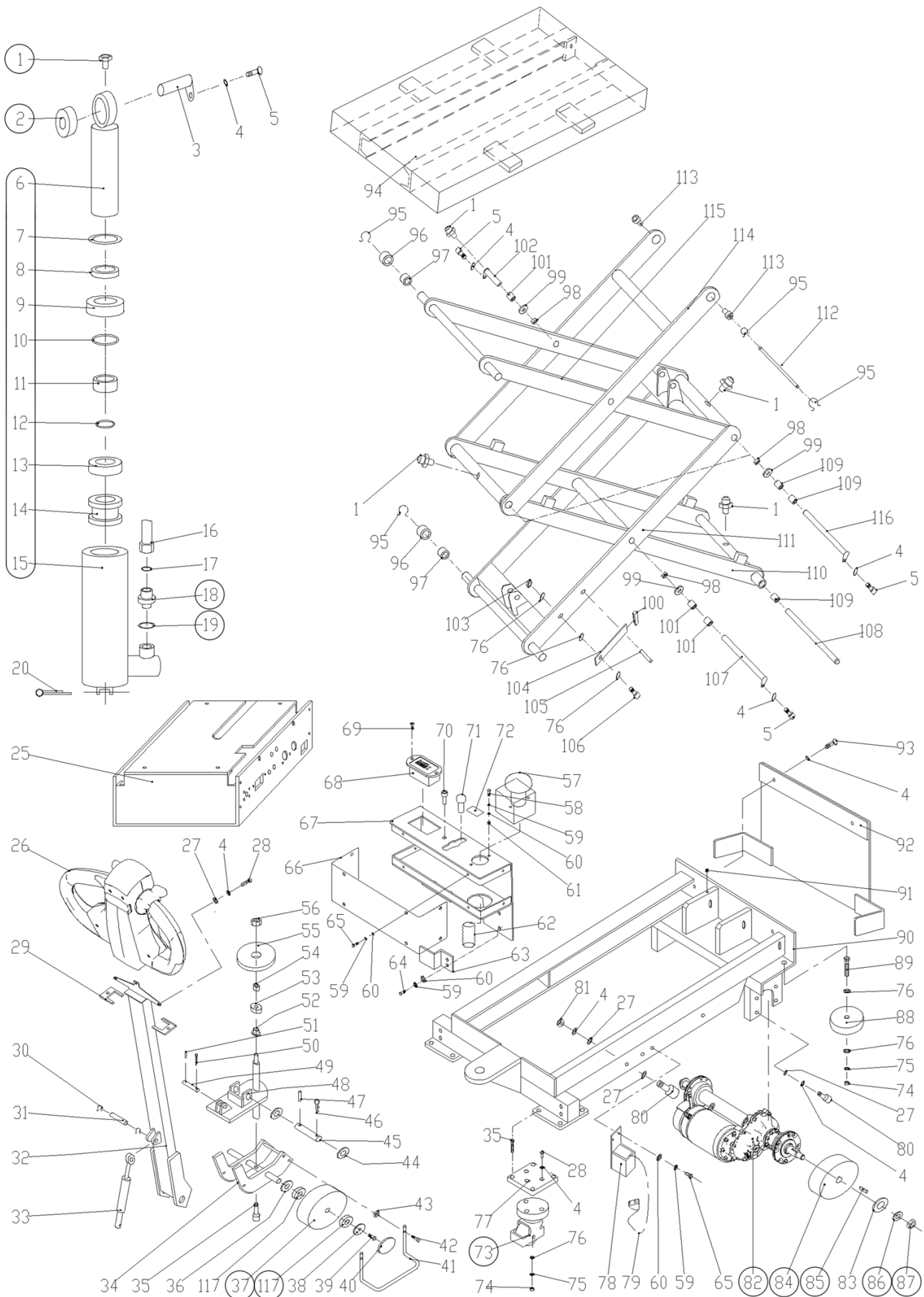
8 **DIAGRAMS**
HYDRAULIC DIAGRAM



WIRING (ELECTRICAL) DIAGRAM

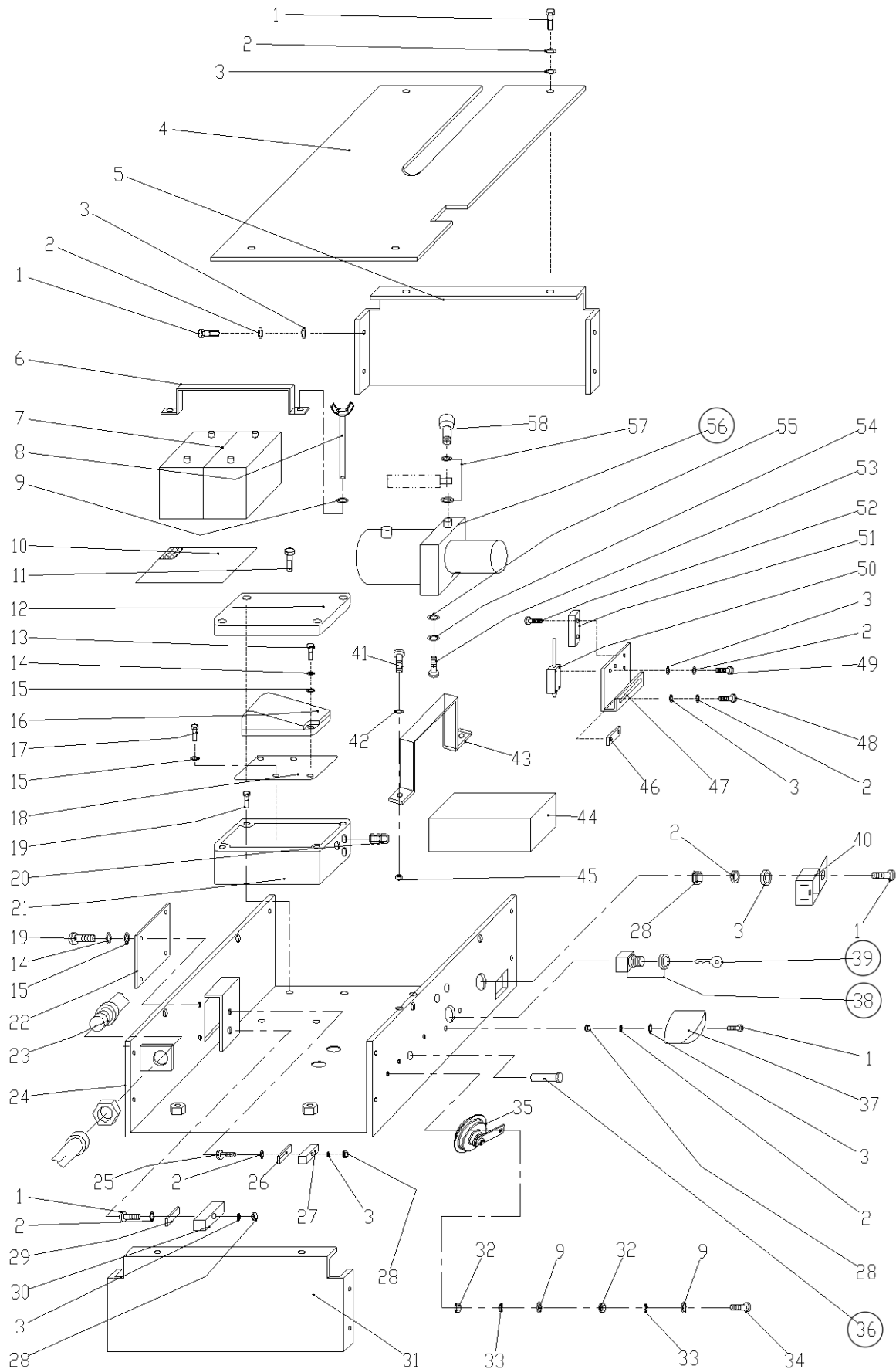


9 EXPLODED VIEWS + RP PARTS



NOTE: Circled number components are available as replacement parts. See table on the next page.

HYDRAULIC POWER PACK - Part [25]



NOTE: Circled number components are available as replacement parts. See table on the next page.

REPLACEMENT PARTS

Replacement Parts for 641689

Model Number	Description	Drawing Part No.
B3247864	Replacement tiller with wire for 641689	26
B3247865	Replacement air spring for 641689	33
B3247858	Replacement cylinder for 641689	1,2,6-15,18,19
B3247859	Replacement power pack for 641689	[25]-56
B3247870	Replacement drive unit for 641689	82,85,86,87
B3247875	Replacement balance wheel for 641689	73
B3247871	Replacement front wheel for 641689	84
B3247872	Replacement rear wheel for 641689	37, 117
B3247873	Replacement fuse for 641689	[25]-36
B3247874	Replacement Lock Out Switch + Key for 641689	[25]-38, [25]-39

NOTE: For part numbers with the [25] prefix, refer to the hydraulic power pack exploded view.



GLOBALINDUSTRIAL.COM **1-800-645-1232**

© 2026 Caterpillar. All Rights Reserved. CAT, CATERPILLAR, LET'S DO THE WORK, their respective logos, "Caterpillar Corporate Yellow", the "Power Edge" and Cat "Modern Hex" trade dress as well as corporate and product identity used herein, are trademarks of Caterpillar and may not be used without permission.