



**GLOBALTM
INDUSTRIAL**

We can supply that.[®]

User's manual

Manual del usuario

Manuel de l'utilisateur

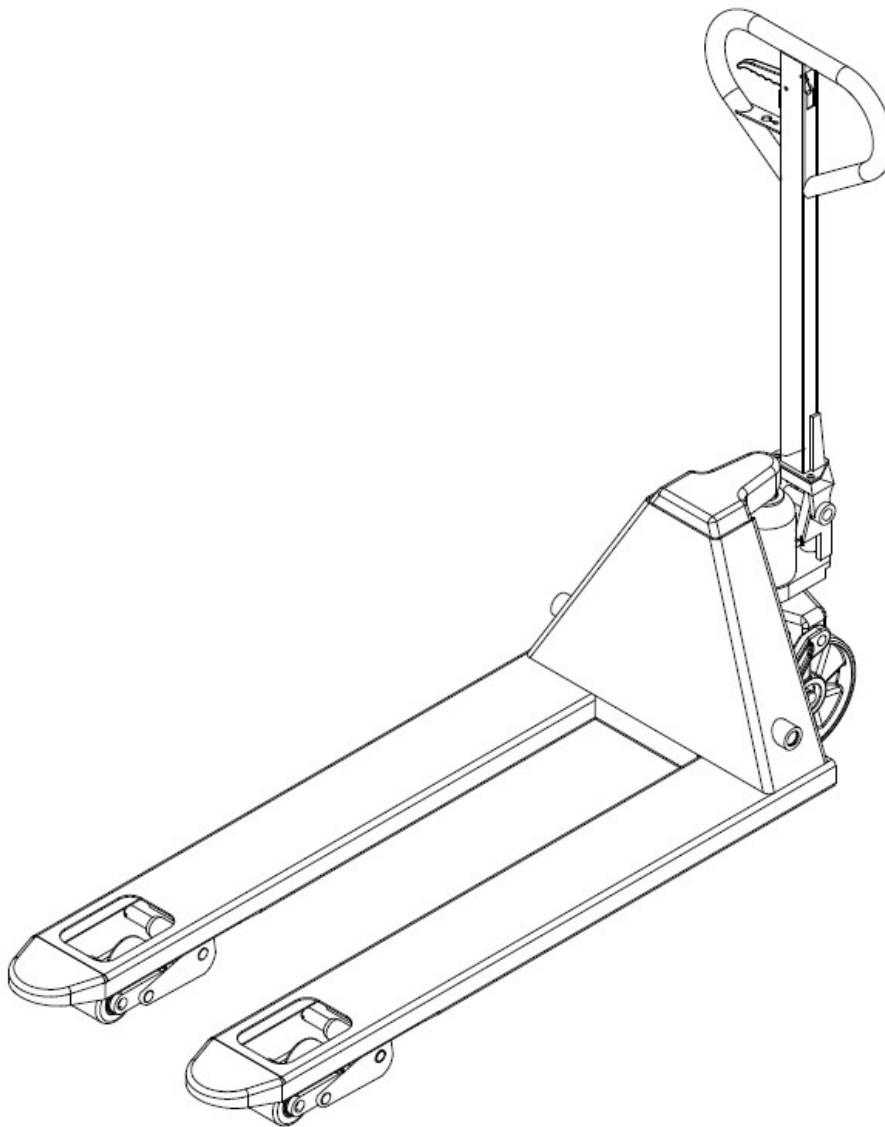
**Customer Service
US: 1-800-645-2986**

**Servicio de atención al Cliente
US: 1-800-645-2986**

**Service à la clientèle
Canada: 888-645-2986**

Industrial Manual Pallet Jack User Manual

Models: 334475, 251783, 251784, 251785



WARNING:

Do not use the pallet jack before reading and fully understanding these operating instructions.

NOTE:

Check the model number on the pallet jack ID-plate and confirm that it matches the model numbers this manual is applicable for.

Keep this manual for future reference.

Manual Pallet Jack

Table of Contents

- DISCLAIMER..... 3**
- WARNING 3**
- CORRECT USAGE/APPLICATION 4**
- DESCRIPTION OF MANUAL PALLET JACK 5**
 - MAIN COMPONENTS, SAFETY FEATURES, & WARNING LABELS.....5
 - WARNING AND SAFETY LABELS5
 - MAIN TECHNICAL DATA.....6
 - IDENTIFICATION PLATE.....7
- WARNINGS AND SAFETY INSTRUCTIONS..... 7**
- ASSEMBLY AND STORAGE 8**
 - TILLER ASSEMBLY FOR TYPE HPTA8
 - TILLER ASSEMBLY FOR TYPE HPTD9
 - HYDRAULIC VALVE ADJUSTMENT..... 10
 - STORAGE/REASSEMBLY..... 10
 - TRANSPORTING 10
- OPERATING INSTRUCTIONS 11**
 - OPERATING CONDITIONS 11
 - PARKING 11
 - LIFTING LOADS..... 11
 - MOVING LOADS 11
 - LOWERING LOADS..... 11
 - MALFUNCTIONS 11
- DAILY INSPECTION 12**
- REGULAR MAINTENANCE 12**
 - DAILY MAINTENANCE 12
 - MONTHLY MAINTENANCE..... 12
 - BI-ANNUAL MAINTENANCE..... 12
 - ADDING HYDRAULIC OIL..... 12
- TROUBLESHOOTING..... 13**
- HYDRAULIC CIRCUIT..... 13**
- WARRANTY..... 14**

Manual Pallet Jack

DISCLAIMER

Before operating this manual pallet jack, fully read this user manual and understand the usage of the manual pallet jack completely. Improper operation may create dangerous situations that can lead to property damage or bodily injury.

Keep this handbook for future reference. If this or the warning/caution labels are damaged or get lost, please contact Global Industrial for a replacement.

WARNING

- Environmentally hazardous waste, such as batteries, oil and electronics, will have a negative impact to the environment or health if handled incorrectly.
- The waste packages should be sorted and put into solid dustbins according to the materials and be disposed of according to local environment regulations and authorities.
- In case of an oil spill, the user should immediately prepare absorbable materials (such as cloth) to absorb leaking oil in time. To avoid environmental impact, the used absorbable materials should be disposed of according to local environment regulations and authorities.
- The product images displayed are for illustrative purposes only. Actual products may vary slightly from the images shown in this manual.



NOTE: When this symbol is used, the following instructions should be heeded. Failure to comply may lead to risk to life, personal injuries, or major damage to property.

Manual Pallet Jack

1 CORRECT USAGE/APPLICATION

- Only use this manual pallet jack as instructed by this manual.
- This pallet jack is a manually operated manual pallet jack designed to lift and transport loads rated on industrial pallets. Do not use the pallet jack to lift or carry personnel and do not use this pallet jack for other purpose other than its intended use. Improper usage can cause bodily injuries and/or equipment damage.
- The operator/the company is responsible for correct usage and has to ensure that this pallet jack is only operated by staff who have been authorized and trained to use it.
- Do not exceed the rated capacity of the pallet jack. The capacity is clearly marked on the identification plate found on the side of the pallet jack.
- The manual pallet jack is intended to be used for indoor applications with ambient temperatures between 40 degrees F and 105 degrees F.
- Operating conditions should have adequate lighting, minimum 50 Lux.



This pallet jack should only be used on substantially firm, smooth, level, and finished surfaces. Do not transport loads with pallet jack on slopes. Before raising the load, the load must be positioned so that its center of mass is centered between the pallet jack forks. The pallet under the load must be in satisfactory condition.

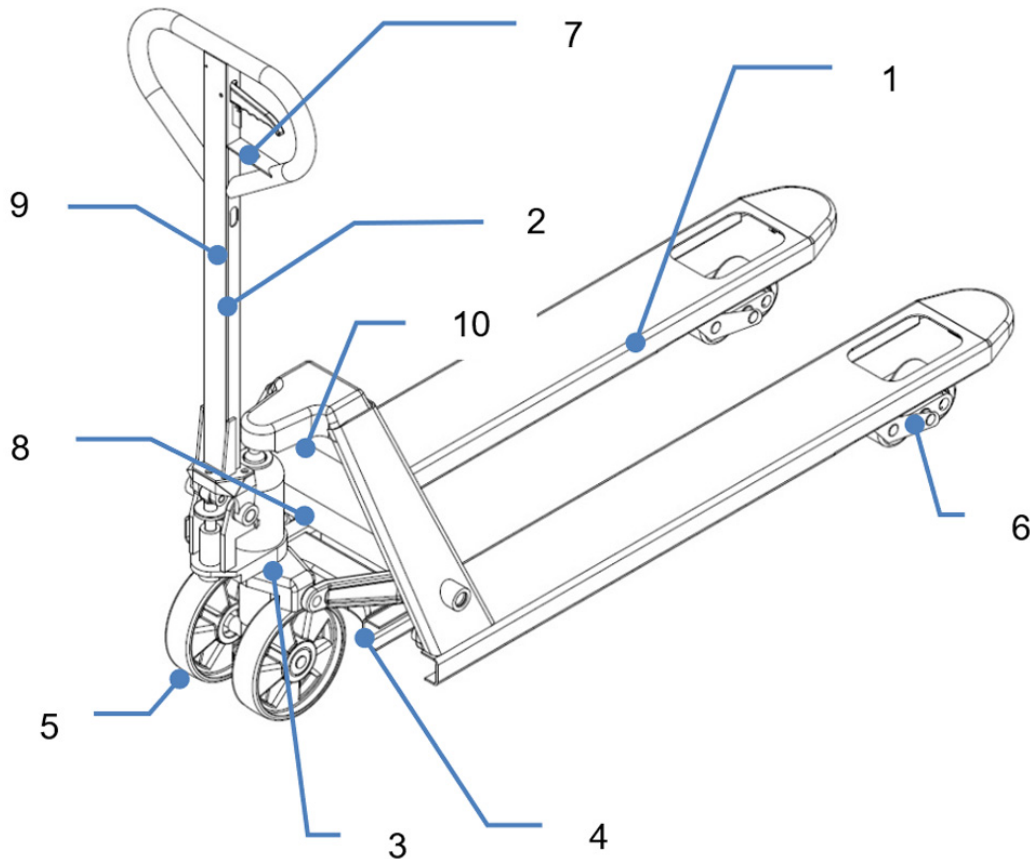
Notice Regarding Modifications:

No modifications or alterations to this manual pallet jack shall be made without the prior written approval of the original pallet jack manufacturer, its authorized representative, or a successor thereof. This includes- but is not limited to- changes affecting braking, steering, visibility, and accessories/attachments. When the manufacturer or its successor approve a modification or alteration, they shall also make and approve appropriate changes to capacity plate, decals, tags and operation and maintenance handbooks. Failure to comply with this will void the warranty.

Manual Pallet Jack

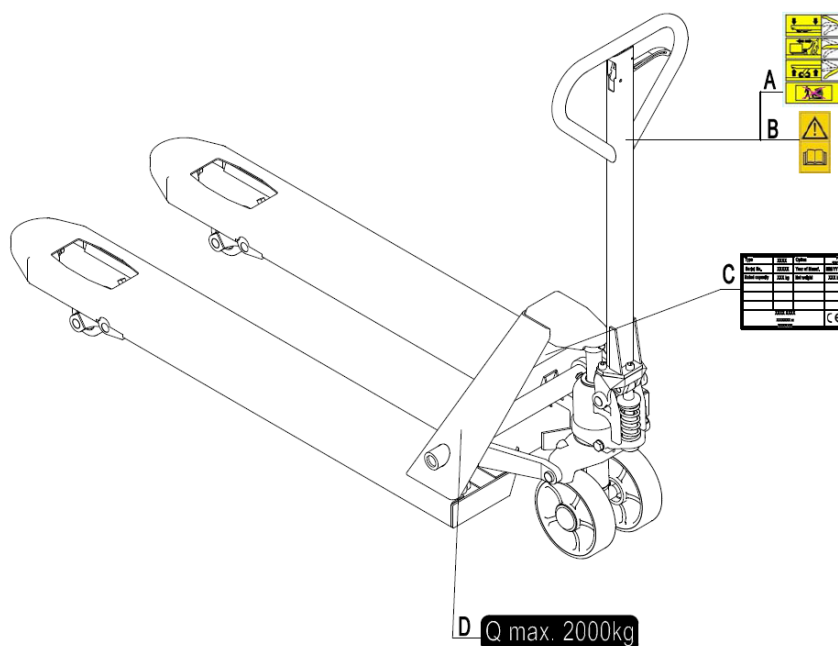
2 DESCRIPTION OF MANUAL PALLET JACK

MAIN COMPONENTS, SAFETY FEATURES, & WARNING LABELS



- | | |
|---------------------------|--------------------------------|
| 1. CHASSIS | 7. LEVER |
| 2. TILLER ARM | 8. IDENTIFICATION PLATE |
| 3. HYDRAULIC PUMP | 9. LIFTING INSTRUCTION STICKER |
| 4. LIFTING MECHANISM | 10. WEIGHT CAPACITY STICKER |
| 5. STEERING WHEEL (FRONT) | |
| 6. LOAD WHEELS | |

WARNING AND SAFETY LABELS

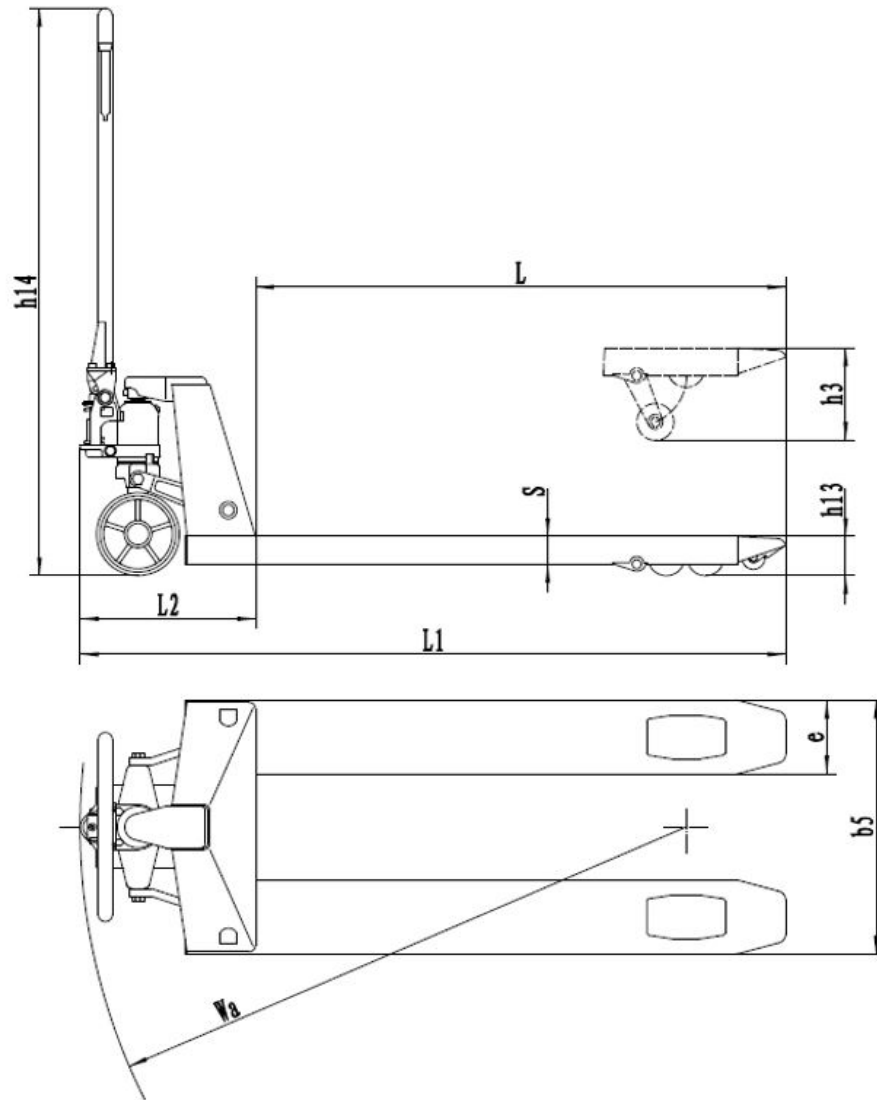


- A. Operating instruction sticker
- B. Warning sticker
- C. Identification plate
- D. Max capacity sticker

The warning & safety labels should be visibly placed according to image shown on the left. Always follow the operating instructions when using the pallet jack. If the decals are damaged or missing, they must be replaced before using the pallet jack again.

Manual Pallet Jack



MAIN TECHNICAL DATA



TYPE		334475	251783	251784	251785
Load Capacity	Q (lbs)	5000	5000	5000	5000
Service Weight	(lbs)	157	151	148	137
Tire Size (front)	(in)	Ø 7 x 2			
Tire Size (back)	(in)	Ø 3 x 3-5/8			
Number of Wheels (front/back)		2/2			
Height of Tiller	h14 (in)	48.5			
Height (Lowered)	h13 (in)	3			
Height (Raised)	h3 (in)	7.5			
Overall Length	L1 (in)	63-3/8	57-3/8	63-3/8	50-3/4
Fork Dimensions	s/e/L (in)	1-7/8 5-7/8 48	1-7/8 1-7/8 42	1-7/8 5-7/8 48	1-7/8 5-7/8 35-1/2
Distance Between Forks	b5 (in)	27	27	21-1/4	21-1/4

Manual Pallet Jack

IDENTIFICATION PLATE

1	Type	HPT-D	Model no.	168034	4
2	Serial No.	J24072978-1/001	MFG Date	07/2024	5
3	Rated capacity	6600 lb.			
					

1. Designation/model type
2. Serial number
3. Rated capacity
4. Model Number
5. Manufacturing Date

3 WARNINGS AND SAFETY INSTRUCTIONS



DO NOT:

- Allow people other than the operator to stand in front of or behind the pallet jack when it is moving or lifting/lowering a load.
- Overload the pallet jack by exceeding the maximum rated capacity.
- Step/walk in the path of the pallet jack wheel when moving the pallet jack
- Use the pallet jack on sloped or inclined surfaces.
- Lift/carry/transport people.
- Use the pallet jack on an unstable, unbalanced, and/or loosely stacked load.
- Use the pallet jack in environments with explosive hazards.
- Use the pallet jack in damp and wet environments; it is not designed to be water resistant.

DO:

- Watch out for sudden changes in floor elevation when moving the pallet jack; sudden jolts may cause the load to fall off of pallet.
- Watch the condition of load when transporting it with the pallet jack; if load becomes unstable and is about to fall, stop the pallet jack immediately to fix the load.
- Slow down when performing tight turns to prevent the load from becoming unstable.
- Perform regular maintenance on the pallet jack.

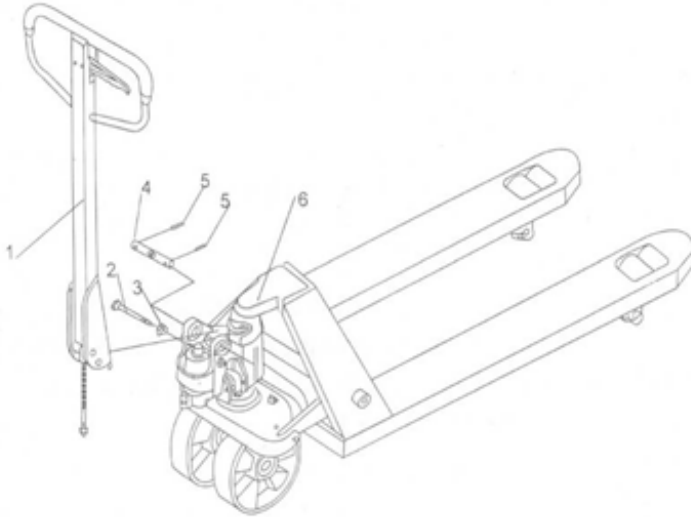
Manual Pallet Jack

4 ASSEMBLY AND STORAGE

TILLER ASSEMBLY FOR TYPE HPTA

When receiving the manual pallet jack, some assembly is required.

Check to confirm all the pallet jack components are present and ensure that they are undamaged before assembling the pallet jack.

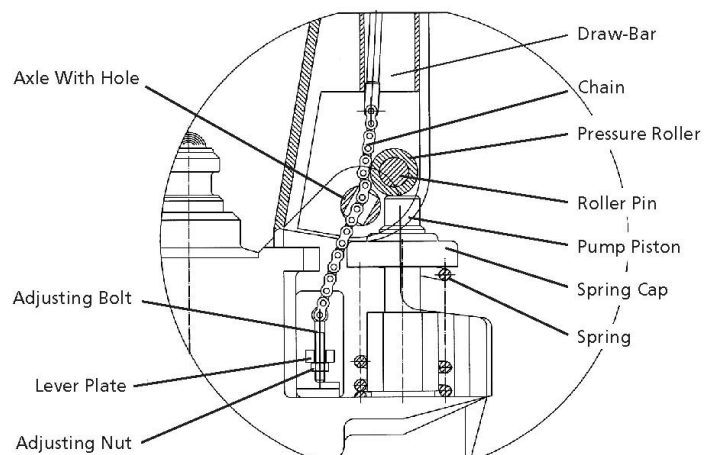
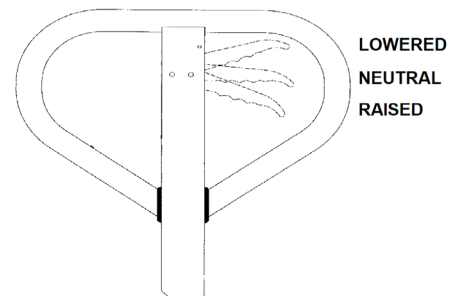
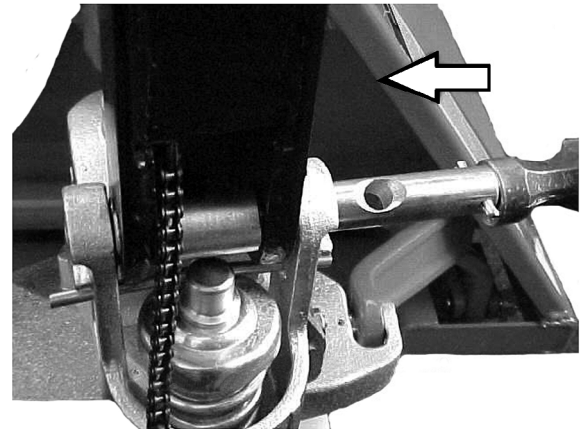


1. Tiller Arm
2. Pin
3. Nut
4. Axle
5. Dowel Pin (2 pcs- one should already be installed on axle)
6. Chassis with Pump

1. Insert the tiller arm (1) into the pump piston in the chassis (6). Insert the axle (4) through the holes on the pump and tiller arm, using a hammer to gently tap it if needed.
2. Set the control lever on the tiller arm (4) to the "lowered" position by pulling it upwards. Pass the adjusting bolt and nut through the hole in the axle (4).
3. Press the tiller arm down and remove the pin (2).
4. Set the control level to the "raised" position by pushing it downwards. Raise the lever plate on the pump side of the chassis (6) with the pin (2) and slide the adjusting bolt into the front slot of the lever plate. The adjusting nut should be under the lever plate.

NOTE: The control lever should engage and disengage the lever plate when in the lowered and raised position respectively. If the lever plate is not properly engaged, adjust the adjusting bolt until it does.

5. Insert the second dowel pin (5) into the small hole at the end of the axle (4), using a mallet to gently tap it down if necessary.

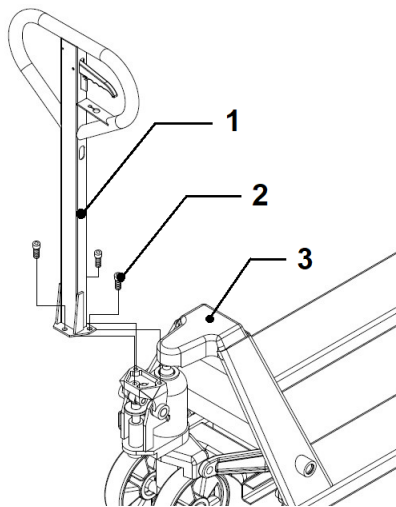


Manual Pallet Jack

TILLER ASSEMBLY FOR TYPE HPTD

When receiving the manual pallet jack, some assembly is required.

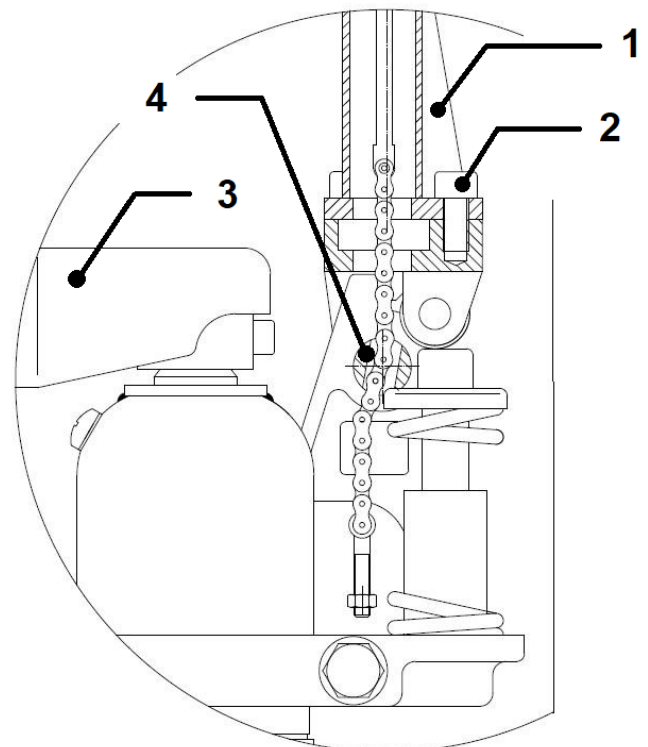
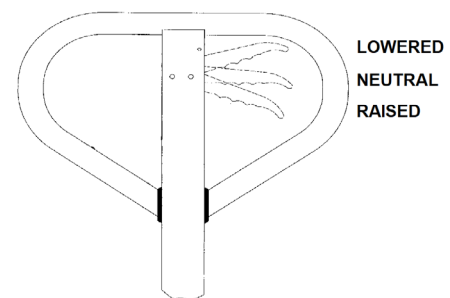
Check if all the pallet jack components are present and check to ensure that they are undamaged before assembling the pallet jack.



1. Tiller Arm
2. Screws (3 pc)
3. Chassis with Pump
4. Axle (part of chassis)

1. Remove the three screws (2) from the tiller connector on the chassis (3).
2. Orient the tiller arm (1) so that the three screw holes are aligned, then insert the chain + adjusting bolt through the hole in the axle (4).
3. Attach the tiller arm to the chassis with the three screws that were previously removed.
4. Set the control lever to the "raised" position by pushing it downwards, then raise the lever plate on the pump end of the chassis with a screwdriver. Insert the adjusting bolt into the front slot of the lever plate. The adjusting nut should be under the lever plate.

NOTE: The control lever should engage and disengage the lever plate when in the lowered and raised position respectively. If the lever plate is not properly engaged, adjust the adjusting bolt until it does.

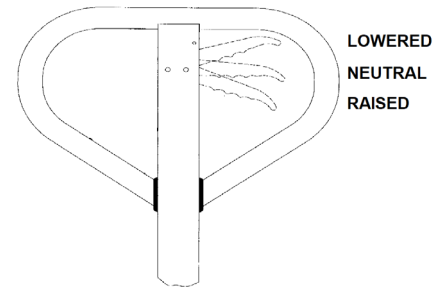


Manual Pallet Jack

HYDRAULIC VALVE ADJUSTMENT

The control lever on the tiller has three different positions:

- Lowered**- Lever is pulled upwards and will automatically move back into the neutral position when released.
- Neutral**- Lever is in center position.
- Raised**- Lever is pushed downwards.



When the lever is in the neutral position, the forks will stay at the same position even when the tiller is pumped.

When the lever is in the lowered position, the forks will lower. When the lever is in the raised position, pumping the tiller arm will raise the fork.

If the pallet jack do not operate as described, follow the steps below to fix it.

To adjust the hydraulic valve:

- If the forks are raised when pumping the tiller arm while the lever is in the **neutral** position, turn the nut on the adjusting bolt clockwise until the pumping motion does not raise the forks when the lever is in the neutral position.
- If the forks are being lowered when pumping the tiller arm in the neutral position, turn the nut on the adjusting bolt counter-clockwise until the pumping motion does not lower the forks when the lever is at the neutral position.
- If the forks are not lowering when the lever is in the lowered position, turn the nut on the adjusting bolt clockwise until putting the control lever in the lowered position lowers the forks. Check if the pallet jack is working properly when the control lever is in the neutral position.
- If the forks are not raised when pumping the tiller arm in the raised position, turn the nut on the adjusting bolt counter-clockwise until the pumping motion raises the forks when the lever in the raised position. Then check if the pallet jack is working properly when the control lever is in the neutral and lowered positions.

STORAGE/REASSEMBLY

When storing the pallet jack, remove any load and lower the forks to the lowest position. Grease all the moving parts, such as axles and wheels, to protect against corrosion and dust. Perform occasional inspections on the stored pallet jack and check that the wheels are not flattening while in storage.

When disassembling the pallet jack for storage, refer to the assembly instructions above in this chapter and perform them in reverse.

TRANSPORTING

When transporting the pallet jack, remove all loads from the forks. Lower the forks to their lowest position. Lash the pallet jack securely with dedicated lashing straps before moving it.

Manual Pallet Jack

5 OPERATING INSTRUCTIONS

OPERATING CONDITIONS

- When operating the pallet jack, the operator should be wearing adequate personal protective equipment (PPE) such as but not limited to: safety shoes, safety glasses, gloves, and high-visibility clothing.
- This pallet jack is intended for use in indoor environments with ambient temperatures between 40 degrees F and 105 degrees F.
- This pallet jack should only be used on flat, finished surfaces. Transporting loads on gradients or sloped surfaces is prohibited.
- Operating conditions should have adequate lighting, minimum 50 Lux.
- A loaded pallet jack should never be left unattended.

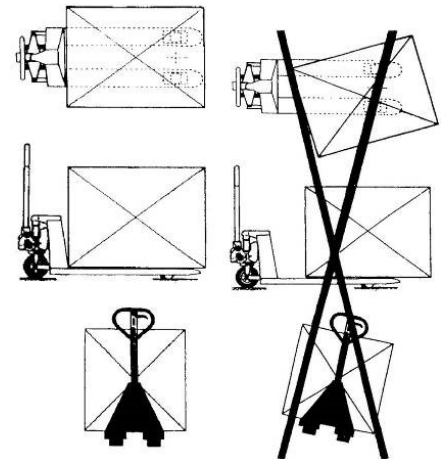
PARKING

- Move the pallet jack to an unobstructed area with a smooth, even surface and that will not interfere with other operations.
- Pull the control lever to the "lowered" position to lower the forks until they are in their lowest position.



LIFTING LOADS

- Confirm that the load does not exceed the maximum rated capacity of the pallet jack.
- Position the pallet jack so that the forks are directly under the pallet/load and the back end of the forks rests against the load. (Refer to diagram to the right)
- Push the control lever down into the "raised" position (refer to the diagram in previous section).
- Pump the tiller arm up and down to gradually lift the load.



NOTE: The load must be evenly distributed across both forks of the pallet jack!

MOVING LOADS

- Use the tiller arm to push/pull the pallet jack and to steer the wheels.
- Do not operate this pallet jack on slopes or inclined surfaces, especially with a load.
- When transporting loads, avoid going over bumps and sudden changes in floor elevations that may destabilize the load.
- Keep an eye on the load when transporting it. If it looks unstable and/or about to fall down, immediately stop the pallet jack and re-stabilize the load.

LOWERING LOADS

- Confirm that there are no limbs or obstructions underneath the forks/pallet.
- Ensure there is adequate clearance for the pallet jack to back out from the pallet.
- Slowly pull the control lever to the "lowered" position. Do not pull the control lever abruptly, as it will cause the load to suddenly drop and possibly cause damage to the load, pallet jack, or floor.

MALFUNCTIONS

- If any malfunctions occur while using the pallet jack, cease use immediately and refer to the troubleshooting section.
- If the issue persists, please contact Global Industrial customer service.

Manual Pallet Jack

6 DAILY INSPECTION

Before using the pallet jack, the operator should conduct the following safety inspection to maximize the lifetime of this product and prevent malfunctions. The forks should be fully lowered and unloaded when performing this check.



WARNING: DO NOT USE THE PALLET JACK IF ANY ISSUES ARE FOUND.

- Visually check for structural deformations or cracks in the tiller arm, forks, or any of the components.
- Listen for any unusual noises, such as cracking or binding sounds, when the lifting mechanism is being used.
- Visually check for oil leakage.
- Check if there is any flattening of the wheels.
- Check if there is any damage to the wheels and clear out any debris stuck in them.
- Confirm that all the bolts and nuts are firmly tightened.
- Verify that all the labels are in place and undamaged.

7 REGULAR MAINTENANCE

- Only qualified and trained personnel are allowed to perform service on this pallet jack.
- Before servicing the pallet jack, remove the load and fully lower the forks.
- Immobilize and secure all parts the pallet jack before working on components that may become pinch hazards.
- Only use replacement parts supplied by Global Industrial.
- Waste material, like hydraulic oil, must be properly disposed and recycled according to the national and local environmental regulations.

DAILY MAINTENANCE

- To be performed every day before use.
- Follow the daily inspection routine describe in section 6.

MONTHLY MAINTENANCE

- To be performed every month.
- Check hydraulic oil levels before use, especially when pallet jack is frequently used. Add more hydraulic oil if necessary. Required hydraulic oil should be type ISO VG32, with a viscosity of 30 cSt at 105 degrees F.
- Clean all the bearings and shafts of any dirt and debris. Lubricate them as needed with grease or lubricating fluid.

BI-ANNUAL MAINTENANCE

- To be performed every 6 months.
- Replace the hydraulic oil. Required hydraulic oil should be type ISO VG32, with a viscosity of 30 cSt at 105 degrees F. Pump capacity is 1 qt (0.3 L).
- If hydraulic oil becomes substantially darker or feels gritty, oil may need to be changed more frequently than the standard 6 months.



WARNING: If hydraulic oil becomes milky white in color, this indicates water has gotten into the hydraulic system and the oil needs to be changed immediately. Continued use without changing the compromised oil may cause irreparable damage to the truck.

ADDING HYDRAULIC OIL

1. Fully lower the forks.
2. Lay the pallet jack on its side. Position the drain plug of the hydraulic cylinder upwards.
3. Remove the screw plug.
4. Add hydraulic oil until the oil level is visible at the bottom of the hole.
5. Add the screw plug back and tighten it.
6. Move the pallet jack back into its upright position.



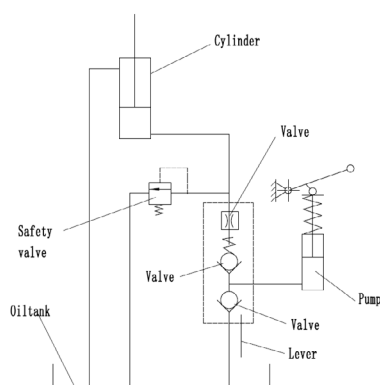
NOTE: Air may get trapped in the hydraulic pump during transportation or when replacing the oil, which may cause the forks to not raise when pumping the tiller arm. To fix this, perform several cycles of raising and lowering the forks until it works properly.

Manual Pallet Jack

8 TROUBLESHOOTING

No.	ISSUE	POSSIBLE CAUSES	SOLUTION
1	Forks don't raise, don't fully raise, or raise slowly when pumping the tiller arm.	<p>a) Low hydraulic fluid level or impurities in oil.</p> <p>b) Control lever is not adjusted.</p> <p>c) Load is too heavy and the overload release valve is engaged.</p> <p>d) Temperature is too low and the hydraulic oil has congealed.</p> <p>e) Air trapped in hydraulic pump.</p>	<p>a) Add more hydraulic oil or fully replace the oil as outlined in section 7.</p> <p>b) Adjust the control level as outlined in section 4.</p> <p>c) Reduce the load.</p> <p>d) Operate the pallet jack in a warmer environment.</p> <p>e) De-aerate the hydraulic pump as outlined in section 7.</p>
2	Forks don't lower or don't fully lower.	<p>a) There is an obstacle under the pallet jack forks or lifting mechanism.</p> <p>b) Control lever is not adjusted.</p> <p>c) Fork was left in raised position for an extended period of time and the exposed piston rod has rusted.</p> <p>d) The piston rod or pump is deformed from overloading or uneven loading over time.</p>	<p>a) Raise the forks and safely remove the obstructions.</p> <p>b) Adjust the control level as outlined in section 4.</p> <p>c) Keep the fork in the lowest position when not in use and lubricate the piston rod.</p> <p>d) Replace the piston rod or pump.</p>
3	Forks lower without putting the control lever into the "lowered" position.	<p>a) Oil impurities are preventing the release valve from fully closing.</p> <p>b) Hydraulic components and/or seals may be cracked or worn down.</p> <p>c) Control lever is not adjusted.</p>	<p>a) Drain and replace hydraulic oil as outlined in section 7.</p> <p>b) Inspect and replace worn seals and/or components as needed.</p> <p>c) Adjust the control level as outlined in section 4.</p>
4	Oil leakage	<p>a) Worn or damaged seals</p> <p>b) Cracked or worn hydraulic components.</p>	<p>a) Replace seals.</p> <p>b) Replace worn components.</p>

9 HYDRAULIC CIRCUIT





GLOBAL[®] INDUSTRIAL

We can supply that.[®]

Over 1,000,000 products. Industrial strength service.

We can supply that.

REGISTER ONLINE AT

<http://www.globalindustrial.com/wr> or <http://www.globalindustrial.ca/wr>

Global Limited 1 Year Warranty

1. LIMITED WARRANTY

Global Equipment Company Inc. (DBA Global Industrial) ("Global") hereby warrants to you, the original purchaser and end user ("you" or "your"), that the products that you purchased which accompany this Limited Warranty ("Products") shall be free from defects in materials and workmanship under normal use consistent with the accompanying documentation for 1 year commencing upon the date of purchase (the "Warranty Period").

Global will repair or replace any Product determined to be defective and which has been returned, as set forth in section 3 herein, to Global. A Product may be replaced with a new or used product and/or current or prior revision. Where Global determines in its sole judgment that repair or replacement of such Product is not reasonable, Global will keep the non-conforming Product and refund to you the amount you paid for such Product. Returned Products shall be subject to the balance of the Warranty Period otherwise applicable. Any reconditioned parts used by Global shall be subject to all the same provisions as otherwise applicable to new parts.

THE FOREGOING DESCRIBES THE SOLE LIABILITY OF GLOBAL, AND YOUR SOLE REMEDY, FOR ANY BREACH OF WARRANTY. IF YOU DO NOT AGREE WITH THE TERMS OF THIS LIMITED WARRANTY, YOU MUST RETURN THE PRODUCTS UNUSED AND IN THEIR ORIGINAL PACKAGING WITHIN THREE (3) DAYS AND YOUR PURCHASE PRICE WILL BE REFUNDED.

2. WARRANTY EXCLUSIONS AND LIMITATION OF LIABILITY

This Limited Warranty does not cover: (i) defects or damages resulting from acts of God, casualty, accident, misuse or abuse, overloading, exceeding the recommended weight capacity, neglect, alterations, modification, service or repair by other than Global or its independent third party service providers, including without limitation by you; (ii) improper assembly or installation or deinstallation, operation or maintenance, improper connections with peripherals or other causes not arising out of defects in the materials or workmanship of Products; (iii) any Product for which the warranty sticker has been removed, modified or defaced; (iv) shipping containers, batteries, cabinets, media, software or accessories; (v) normal wear and tear; (vi) damage to or loss of repaired or replaced Products during shipping by Global except when such damage or loss is caused by poor or inadequate packaging by Global; or (vii) Products purchased outside the United States or Canada.

UNDER NO CIRCUMSTANCES WILL GLOBAL BE LIABLE FOR ANY LOSS OF USE, INTERRUPTION OF BUSINESS OR ANY INDIRECT, SPECIAL, INCIDENTAL, PUNITIVE OR CONSEQUENTIAL DAMAGES OF ANY KIND (INCLUDING LOST PROFITS) REGARDLESS OF THE FORM OF ACTION WHETHER IN CONTRACT, TORT (INCLUDING NEGLIGENCE), STRICT PRODUCT LIABILITY OR OTHERWISE, EVEN IF GLOBAL HAS BEEN ADVISED OF THE POSSIBILITY OF SUCH DAMAGES. IN NO EVENT SHALL THE TOTAL LIABILITY OF GLOBAL HEREUNDER EXCEED THE GREATER OF \$50 OR THE AMOUNT YOU ACTUALLY PAID FOR THE PRODUCT GIVING RISE TO SUCH LIABILITY, REGARDLESS OF THE CAUSE OF ACTION, IN CONTRACT, TORT, STRICT LIABILITY OR OTHERWISE. NOT ALL JURISDICTIONS ALLOW SUCH LIMITATIONS OF DAMAGES SO THE FOREGOING LIMITATIONS MAY NOT APPLY TO YOU.

3. PROCEDURE FOR WARRANTY SERVICE

Prior to returning any Products to Global for warranty service, you must first contact Global, by telephone at (800) 645-2986 (US) or (888) 645-0878 (Canada) to confirm that such Products are covered by this Limited Warranty. If such Products are so covered, you shall obtain from Global a return materials authorization ("RMA") number and shipping instructions prior to any shipment of such Products to Global, and you must include such RMA number with any corresponding Product shipment, along with a true and correct copy of the original receipt showing the date of Product purchase by you, and a detailed, written description of any associated Product problems.

Please note that you are responsible for all shipping charges incurred in returning an item for exchange or repair. Global shall pay for return shipping of repaired and/or replaced Products to addresses within the United States and Canada only, and return shipments to all other addresses outside of the United States or Canada is your responsibility. If Global determines that any Product is not covered by this Limited Warranty, you must pay all parts, labor charges and return shipping for such Product.

4. WARRANTY DISCLAIMER AND LIMITATIONS

EXCEPT AND TO THE EXTENT EXPRESSLY SET FORTH ABOVE THERE ARE NO WARRANTIES, EXPRESS OR IMPLIED, INCLUDING BUT NOT LIMITED TO, ANY WARRANTIES OF MERCHANTABILITY OR FITNESS FOR A PARTICULAR PURPOSE AND GLOBAL EXPRESSLY DISCLAIMS ALL WARRANTIES NOT STATED HEREIN.

EXCEPT AND TO THE EXTENT EXPRESSLY SET FORTH ABOVE, THE PRODUCTS ARE PROVIDED ON AN "AS IS" BASIS, AND GLOBAL MAKES NO ADDITIONAL WARRANTIES, EXPRESS, IMPLIED, ARISING FROM COURSE OF DEALING OR USAGE OF TRADE, OR STATUTORY, AS TO THE PRODUCTS OR ANY MATTER WHATSOEVER. THIS IS A LIMITED WARRANTY AND IS THE ONLY WARRANTY MADE BY GLOBAL. THE AGENTS, EMPLOYEES, DISTRIBUTORS, AND DEALERS OF GLOBAL ARE NOT AUTHORIZED TO MAKE MODIFICATIONS TO THIS LIMITED WARRANTY, OR MAKE ADDITIONAL WARRANTIES BINDING ON GLOBAL. ACCORDINGLY, ADDITIONAL STATEMENTS SUCH AS DEALER ADVERTISING OR PRESENTATION, WHETHER ORAL OR WRITTEN, DO NOT CONSTITUTE WARRANTIES BY GLOBAL AND SHOULD NOT BE RELIED UPON. GLOBAL DOES NOT WARRANT THAT THE PRODUCTS WILL OPERATE WITHOUT FAILURE, OR THAT THE PRODUCTS WILL MEET YOUR NEEDS OR EXPECTATIONS. NOT ALL JURISDICTIONS ALLOW SUCH WARRANTY LIMITATIONS SO THE FOREGOING LIMITATIONS MAY NOT APPLY TO YOU.

5. CHOICE OF LAW AND JURISDICTION

FOR PURCHASES WITHIN THE US - This Limited Warranty shall be subject solely to the laws of the State of New York as applied to contracts entered into in the State of New York between New York residents. Any dispute arising hereunder shall be subject to the sole jurisdiction of the State and Federal Courts located in Nassau County, New York. The parties hereby consent to the personal jurisdiction of such courts.

FOR PURCHASES WITHIN CANADA - This Limited Warranty shall be subject solely to the laws of the Province of Ontario. Any dispute arising hereunder shall be subject to the sole jurisdiction of Ontario, Canada. The parties hereby consent to the personal jurisdiction of such courts.

REGISTRARSE EN LÍNEA EN

<http://www.globalindustrial.com/wr> or <http://www.globalindustrial.ca/wr>

Garantía global limitada de 1 año

1. GARANTÍA LIMITADA

Global Equipment Company Inc. (DBA Global Industrial) ("Global") por la presente garantiza al comprador original y usuario final ("usted" o "su"), que los productos adquiridos por usted que incluyen esta Garantía limitada ("Productos") se considerarán libres de defectos respecto de sus materiales y mano de obra en condiciones normales de uso de conformidad con la documentación adjunta durante 1 año a partir de la fecha de compra (el "Plazo de duración de la garantía").

Global reparará o reemplazará todo producto calificado como defectuoso y que hubiere sido devuelto a Global, según lo establecido en la sección 3 de la presente garantía. Un Producto puede ser reemplazado por un producto nuevo o usado y/o quedar sujeto a una revisión actual o previa. En los casos que Global establezca, a su exclusivo criterio, la inviabilidad de la reparación o el reemplazo de dicho Producto, Global conservará el Producto no conforme y le reembolsará a usted el monto abonado por dicho Producto. De ser aplicable, los Productos devueltos estarán sujetos al tiempo restante del "Plazo de Duración de la Garantía. Todas las piezas reacondicionadas utilizadas por Global estarán también sujetas a dichas disposiciones mencionadas anteriormente, aplicables de igual modo a las piezas nuevas, si correspondiere.

LA CLÁUSULA MENCIONADA ANTERIORMENTE DESCRIBE LA RESPONSABILIDAD EXCLUSIVA DE GLOBAL, Y SU ÚNICO RECURSO, POR CUALQUIER INCUMPLIMIENTO DE LA PRESENTE GARANTÍA. SI USTED NO ESTÁ DE ACUERDO CON LOS TÉRMINOS Y CONDICIONES DE LA PRESENTE GARANTÍA LIMITADA, USTED DEBERÁ DEVOLVER LOS PRODUCTOS SIN HABERLOS UTILIZADO Y EN SU EMBALAJE ORIGINAL EN EL PLAZO DE TRES (3) DÍAS Y USTED RECIBIRÁ EL REEMBOLSO DEL DINERO DE SU COMPRA.

2. EXCLUSIONES DE LA PRESENTE GARANTÍA Y LIMITACIÓN DE RESPONSABILIDAD

La presente Garantía limitada no cubre los siguientes supuestos: (i) defectos o daños causados por fuerza mayor, accidentes, uso inapropiado o excesivo, sobrecarga que supere la capacidad del peso recomendado, negligencia, alteraciones, modificación, reparación o mantenimiento realizados por proveedores técnicos independientes o ajenos a Global, entre los que se incluyen las siguientes acciones realizadas por usted: (ii) ensamble o instalación o desinstalación inadecuadas, operación o mantenimiento, conexiones periféricas, funcionamiento o mantenimiento incorrectos, o cualquier otra causa que no surja de un defecto en los materiales o en la mano de obra del Producto; (iii) todo Producto que no contenga el sticker de garantía o cuando dicho sticker haya sido retirado, modificado o esté dañado; (iv) contenedores de envío, baterías, gabinetes, medios, software o accesorios; (v) desgaste normal por el paso del tiempo; (vi) daño o pérdida de los Productos reparados o reemplazados durante el envío por parte de Global en los casos en que dicho daño o pérdida se hubieren producido por un mal o inadecuado embalaje por parte de Global; o (vii) Productos adquiridos fuera de los Estados Unidos o Canadá.

EN NINGÚN CASO GLOBAL SERÁ RESPONSABLE POR LA PÉRDIDA DE USO, INTERRUPCIÓN DE NEGOCIOS O CUALQUIER TIPO DE DAÑO INDIRECTO, ESPECIAL, INCIDENTAL, PUNITIVO O CONSECUENTE (INCLUIDA LA PÉRDIDA DE GANANCIAS), INDEPENDIEMENTE DEL TIPO DE ACCIÓN LEGAL, YA SEA EMANADOS DE UN CONTRATO, DE UN ACTO ILÍCITO (INCLUIDA LA CULPA), RESPONSABILIDAD OBJETIVA SOBRE EL PRODUCTO U OTROS. LO ANTERIOR SE APLICARÁ AÚN EN LOS CASOS EN QUE GLOBAL HAYA SIDO ADVERTIDA SOBRE LA POSIBILIDAD DE DICHOS DAÑOS. EN NINGÚN CASO, EN VIRTUD DE LA PRESENTE GARANTÍA, EL MONTO INDEMNIZATORIO POR RESPONSABILIDAD DE GLOBAL PODRÁ EXCEDER LOS USD 50,00 O LA SUMA QUE USTED HAYA PAGADO POR EL PRODUCTO OBJETO DE DICHA RESPONSABILIDAD, INDEPENDIEMENTE DE LA CAUSAL DE LA ACCIÓN LEGAL, POR EL CONTRATO, ACTO ILÍCITO, RESPONSABILIDAD OBJETIVA U OTRAS. DADO QUE NO EN TODAS LAS JURISDICIONES RIGEN DICHAS LIMITACIONES EN LAS INDEMNIZACIONES, LAS LIMITACIONES ANTERIORES PUEDEN NO SER APLICABLES EN SU CASO.

3. PROCEDIMIENTO PARA EL SERVICIO DE GARANTÍA

Antes de devolver un Producto a Global para obtener el servicio de garantía, Usted debe contactar a Global, por teléfono al (800) 645-2986 (Estados Unidos) ó (888) 645-0878 (Canadá) a los fines de confirmar que dicho Producto esté contemplado en la presente Garantía Limitada. Si dicho Producto estuviera cubierto por la Garantía, usted recibirá un número de autorización de devolución de materiales de Global (en adelante, "ADM") y las instrucciones de envío previas al envío del Producto mencionado a Global. Usted deberá incluir su número de ADM con el envío del Producto correspondiente, junto con una copia fiel del recibo original que incluya la fecha de la compra del Producto realizada por usted.

Por favor tenga en cuenta que usted será responsable de todos los gastos de envío resultantes de la devolución de un artículo para su reemplazo o reparación. Global deberá abonar el envío de devolución del Producto reparado o reemplazado a direcciones dentro de Estados Unidos y Canadá solamente. Los gastos de envío a todas las demás direcciones fuera de Estados Unidos y Canadá quedan bajo su responsabilidad. En el caso de que Global estableciera que un Producto no se encuentra contemplado en la presente Garantía Limitada, usted deberá pagar todos los repuestos, la mano de obra y los gastos de envío por la devolución de dicho Producto

4. EXCLUSIONES Y LIMITACIONES DE LA GARANTÍA

SALVO EN LA MEDIDA EXPRESAMENTE ESTABLECIDA ANTERIORMENTE, NO EXISTEN DENTRO DE LA PRESENTE GARANTÍAS EXPRESAS O IMPLÍCITAS, INCLUIDAS, AUNQUE SIN LIMITACIÓN, GARANTÍAS IMPLÍCITAS DE COMERCIABILIDAD O IDONEIDAD PARA UN PROPÓSITO DETERMINADO Y GLOBAL RECHAZA CUALQUIER TIPO DE GARANTÍA NO INCLUIDA EN LA PRESENTE.

SALVO EN LA MEDIDA EXPRESAMENTE ESTABLECIDA ANTERIORMENTE, LOS PRODUCTOS SON ENTREGADOS EN EL "ESTADO EN QUE SE ENCUENTRAN". GLOBAL NO OFRECE GARANTÍA ALGUNA, NI EXPRESA NI IMPLÍCITA, QUE PUDIERA SURGIR DURANTE EL TRANSCURSO DE UNA NEGOCIACIÓN O EL USO O QUE SEAN ESTABLECIDAS POR LEY, EN LO QUE RESPECTA A LOS PRODUCTOS O A CUALQUIER OTRO ASUNTO. LA PRESENTE CONSTITUYE UNA GARANTÍA LIMITADA Y ES LA ÚNICA GARANTÍA OTORGADA POR GLOBAL. LOS MANDATARIOS, EMPLEADOS, DISTRIBUIDORES Y COMERCIANTES DE GLOBAL NO PODRÁN REALIZAR MODIFICACIONES A LA PRESENTE GARANTÍA LIMITADA NI PRESTAR GARANTÍAS ADICIONALES QUE OBLIGUEN LEGALMENTE A GLOBAL. EN CONSECUENCIA, TODA DECLARACIÓN ADICIONAL, TALES COMO PUBLICIDADES O PRESENTACIONES DEL COMERCIANTE, YA SEAN ORALES O ESCRITAS, NO CONSTITUIRÁN GARANTÍAS OTORGADAS POR GLOBAL Y NO DEBERÁN CONSIDERARSE VÁLIDAS. GLOBAL NO GARANTIZA QUE LOS PRODUCTOS FUNCIONEN SIN FALLAS O QUE SATISFAGAN SUS NECESIDADES O EXPECTATIVAS. DADO QUE NO EN TODAS LAS JURISDICIONES RIGEN DICHAS LIMITACIONES EN LAS INDEMNIZACIONES, LAS LIMITACIONES DE LA CLÁUSULA PUEDEN NO SER DE APLICACIÓN EN SU CASO.

5. ELECCIÓN DE LA LEGISLACIÓN Y JURISDICCIÓN

PARA COMPRAS REALIZADAS DENTRO DE LOS ESTADOS UNIDOS, la presente Garantía Limitada estará sujeta únicamente a las leyes del Estado de Nueva York, según se aplica a los contratos celebrados en el Estado de Nueva York entre residentes del Estado de Nueva York. Toda controversia que surja en virtud de la presente Garantía quedará sujeta a la sola jurisdicción de los Tribunales Estatales y Federales ubicados en el Condado de Nassau, Nueva York.

Por medio de la presente Garantía, las partes acuerdan someterse a la jurisdicción personal de dichos tribunales. PARA COMPRAS REALIZADAS EN CANADA - La presente Garantía Limitada quedará sujeta únicamente a las leyes de la Provincia de Ontario. Toda controversia que surja en virtud de la presente Garantía quedará sujeta a la sola jurisdicción de Ontario, Canadá. Por medio de la presente Garantía, las partes acuerdan someterse a la jurisdicción personal de dichos tribunales.

INSCRIVEZ-VOUS EN LIGNE AU

<http://www.globalindustrial.com/wr> or <http://www.globalindustrial.ca/wr>

Garantie globale limitée de an

1. GARANTIE LIMITÉE

Global Equipment Company Inc. (DBA Global Industrial) («Global») vous garantit, l'acheteur initial et à l'utilisateur («vous» ou «votre»), que les produits que vous avez achetés et qui accompagnent cette garantie limitée («produits») sont exempts de tout défaut de matériaux et fabrication dans des conditions normales d'utilisation conformément à la documentation suivant pour une période d'un an débutant à la date d'achat (la «période de garantie»).

Global réparera ou remplacera tout produit jugé défectueux et qui a été retourné, tel que stipulé à la section 3 ci-dessous, à Global. Un produit peut être remplacé par un produit neuf ou usagé et/ou par une révision actuelle ou antérieure. Lorsque Global détermine à son seul jugement que la réparation ou le remplacement de ce produit n'est pas raisonnable, Global gardera le produit non conforme et vous remboursera le montant que vous avez payé pour ce produit. Les produits retournés sont soumis au reste de la période de garantie applicable par ailleurs. Toutes les pièces reconditionnées utilisées par Global sont soumises à toutes les mêmes dispositions que celles qui s'appliquent autrement aux nouvelles pièces.

CE QUI PRÉCÈDE DÉCRIT LA RESPONSABILITÉ EXCLUSIVE DE GLOBAL, ET VOTRE SEUL RECOURS, POUR TOUT MANQUÈMENT À LA GARANTIE. SI VOUS N'ÊTES PAS D'ACCORD AVEC LES TERMES DE CETTE GARANTIE LIMITÉE, VOUS DEVEZ RETOURNER LES PRODUITS INUTILISÉS ET DANS LEUR EMBALLAGE D'ORIGINE DANS LES TROIS (3) JOURS ET VOTRE PRIX D'ACHAT SERA REMBOURSE.

2. EXCLUSIONS DE GARANTIE ET LIMITATION DE RESPONSABILITÉ

La présente garantie limitée ne couvre pas: (i) les défauts ou dommages résultant d'actes de Dieu, d'accident, de mauvais usage ou d'abus, de surcharge, du dépassement de la capacité de poids recommandée, de négligence, des altérations, modification, service ou réparation par autre que Global ou ses fournisseurs de services tiers indépendants, y compris sans vos limites; (ii) d'un montage ou d'une installation ou d'une désinstallation, d'un fonctionnement ou d'un entretien incorrects, des connexions incorrectes avec des périphériques ou d'autres causes ne résultant pas de défauts dans les matériaux ou la fabrication de produits; (iii) tout produit pour lequel la vignette de garantie a été enlevée, modifiée ou défigurée; (iv) des conteneurs, piles, armes, supports, logiciels ou accessoires d'expédition; (v) d'une usure normale; (vi) des dommages ou la perte de produits réparés ou remplacés pendant l'expédition par Global, sauf si ces dommages ou pertes sont causés par des emballages pauvres ou inadéquats par Global; ou (vii) des produits achetés en dehors des États-Unis ou du Canada.

GLOBAL NE POURRA EN AUCUN CAS ÊTRE TENU RESPONSABLE DE TOUTE PERTE D'UTILISATION, D'INTERRUPTION D'ACTIVITÉ OU DE TOUT DOMMAGE INDIRECT, SPÉCIAL, ACCIDENTEL, PUNITIF OU CONSÉCUTIF DE QUELQUE NATURE QUE CE SOIT (Y COMPRIS LES PERTES DE PROFITS), QUELLE QUE SOIT LA FORME D'ACTION CONTRACTUELLE, DÉLICTEUELLE (Y COMPRIS LA NÉGLIGENCE), LA RESPONSABILITÉ STRICTE DU PRODUIT OU AUTRE, MÊME SI GLOBAL A ÉTÉ AVISÉ DE LA POSSIBILITÉ DE TELS DOMMAGES. EN AUCUN CAS LA RESPONSABILITÉ ENTÈRE CI-DESSOUS DE GLOBAL NE DÉPASSERA CE QUI EST PLUS ÉLEVÉ ENTRE \$50 OU LE MONTANT QUE VOUS AVEZ EFFECTIVEMENT PAYÉ POUR LE PRODUIT DONNANT LIEU À CETTE RESPONSABILITÉ, INDEPENDAMMENT DE LA CAUSE D'ACTION, DANS LE CONTRAT, LE DELIT, LA RESPONSABILITÉ STRICTE OU AUTREMENT. TOUTES LES JURISDICTIONS N'AUTORISENT PAS CES LIMITATIONS DE DOMMAGES, DE SORTE QUE LES LIMITATIONS QUI PRÉCÈDENT PEUVENT NE PAS S'APPLIQUER À VOUS.

3. PROCÉDURE DE SERVICE SOUS GARANTIE

Avant de retourner tous les produits à Global pour le service de garantie, vous devez d'abord contacter Global, par téléphone au (800) 645-2986 (US) ou (888) 645-0878 (Canada) pour confirmer que ces produits sont couverts par cette garantie limitée. Si ces produits sont ainsi couverts, vous obtiendrez de Global un numéro d'autorisation de retour de matériel («ARM») et des instructions d'expédition avant toute expédition de ces produits à global et vous devez inclure ce numéro ARM avec n'importe quelle expédition correspondante de produit, ainsi qu'une copie exacte et correcte du reçu original indiquant la date d'achat de l'achat de votre produit, ainsi qu'une description détaillée et écrite de tout problème de produit associé.

Veillez noter que vous êtes responsable de tous les frais d'expédition engagés pour retourner un article pour un échange ou une réparation. Global doit payer pour l'expédition de retour des produits réparés et/ou remplacés aux adresses aux États-Unis et au Canada seulement ainsi que pour les expéditions de retour à toutes les autres adresses à l'extérieur des États-Unis ou du Canada en revient de votre responsabilité. Si Global détermine que n'importe quel produit n'est pas couvert par cette garantie limitée, vous devez payer toutes les pièces, frais de main-d'œuvre et expédition de retour pour ce produit.

4. DÉNI DE GARANTIE ET LIMITATIONS

SAUF ET DANS LA MESURE EXPRESSÉMENT ÉNONCÉE CI-DESSUS IL N'Y A AUCUNE GARANTIE, EXPRESSE OU IMPLICITE, Y COMPRIS MAIS SANS S'Y LIMITER À TOUTE GARANTIE DE QUALITÉ MARCHANDE OU D'ADAPTATION À UN USAGE PARTICULIER ET GLOBAL DÉCLINE EXPRESSÉMENT TOUTES LES GARANTIES NON MENTIONNÉES DANS LE PRÉSENT DOCUMENT.

SAUF ET DANS LA MESURE EXPRESSÉMENT ÉNONCÉE CI-DESSUS, LES PRODUITS SONT FOURNIS SUR UNE BASE «TEL QUEL» ET GLOBAL NE FAIT AUCUNE GARANTIE ADDITIONNELLE, EXPRESSE, IMPLICITE, DÉCOULANT DE COURS DE TRAITEMENT OU D'UTILISATION DU COMMERCE OU STATUTAIRE, QUANT AUX PRODUITS OU QUELQUE MATIÈRE QUE CE SOIT. IL S'AGIT D'UNE GARANTIE LIMITÉE ET EST LA SEULE GARANTIE FAITE PAR GLOBAL. LES AGENTS, LES EMPLOYÉS, LES DISTRIBUTEURS ET LES CONCESSIONNAIRES DE GLOBAL NE SONT PAS AUTORISÉS À APPORTER DES MODIFICATIONS À CETTE GARANTIE LIMITÉE, OU À FAIRE DES GARANTIES SUPPLÉMENTAIRES CONTRAIGNANTES POUR GLOBAL. PAR CONSÉQUENT, DES DÉCLARATIONS SUPPLÉMENTAIRES TELLES QUE LA PUBLICITÉ OU LA PRÉSENTATION DES CONCESSIONNAIRES, QU'ELLES SOIENT ORALES OU ÉCRITES, NE CONSTITUENT PAS DES GARANTIES GLOBALES ET NE DEVRAIENT PAS ÊTRE INVOQUÉES. GLOBAL NE GARANTIT PAS QUE LES PRODUITS FONCTIONNERONT SANS DÉFAILLANCE, OU QUE LES PRODUITS RÉPONDENT À VOS BESOINS OU À VOS ATTENTES. PAS TOUTES LES JURISDICTIONS NE PERMETTENT DE TELLES LIMITATIONS DE GARANTIE AINSI LES LIMITATIONS CI-DESSUS PEUVENT NE PAS S'APPLIQUER À VOUS.

5. CHOIX DE LA LOI ET DE LA JURIDICTION

POUR LES ACHATS AUX ÉTATS-UNIS : cette garantie limitée est soumise aux seules lois de l'état de New York, telles qu'appliquées aux contrats conclus dans l'état de New York entre les résidents de New York. Tout litige découlant des présentes est soumis à la seule compétence de l'Etat et des tribunaux fédéraux situés dans le comté de Nassau, New York. Les parties consentent par la présente à la compétence personnelle de ces tribunaux.

POUR LES ACHATS AU CANADA : cette garantie limitée est assujettie uniquement aux lois de la province de l'Ontario. Tout différend découlant des présentes est assujetti à la seule compétence de la province de l'Ontario, au Canada. Les parties consentent par la présente à la compétence personnelle de ces tribunaux