

User's manual

Manual del usuario

Manuel de l'utilisateur

 Customer Service
 US: 1-800-645-2986

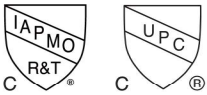
 Servicio de atención al Cliente
 US: 1-800-645-2986

 Service à la clientèle
 Canada: 888-645-2986

Electronic Sensor Faucet 732416



Model 732416



Certified by IAPMO R&T
 against to NSF/ANSI/CAN 372
 for lead free compliance

Read this manual thoroughly prior to installation, operation or maintenance. Keep these instructions in a safe location for future reference. For questions, visit globalindustrial.com or contact Customer Service at 1-800-645-2982.

⚠ WARNING

- Failure to follow installation instructions will void warranty.
- For indoor commercial use only.
- All installation work must be performed by authorized service personnel.
- Shut-off water supply at main source during installation to reduce risk of water damage.
- Please check that all components are present.
- **DO NOT** attempt to repair or replace any part of your appliance unless it is specifically recommended in this manual. All other services should be referred to a qualified technician.
- Thoroughly flush all water lines/hoses and fittings of all foreign matter before connecting to the faucet. Failure to do so will void warranty.
- **Do NOT** use thread sealant.
- **DO NOT** overtighten.
- Faucet includes a manual mixing valve that must be installed and adjusted for proper temperature.
- Install all plumbing and electrical in accordance with national/local codes and regulations.
- Clean water filter located inside black filter compartment located on the side of the control box on a regular basis.
- Prepare new (4) AA alkaline batteries.
- Please do not use any flammable, corrosive, acid, base, or abrasive liquids on the plated or brass surfaces.
- Please use a non acid or base solvent to clean the surface of the faucet.
- Please keep the surface of the sensor clean ,wipe with lens cleaning paper.
- The LED will flash once when sensing an object.
- When the LED remains lit, please replace the battery.
- The faucet will enter sleep mode if inactive for more than 30 minutes. It may take 2 seconds to wake up the system.
- When the water flow becomes reduced, you can release the aerator and the filter to carefully clean it.
- Clean the filter once every month.
- **DO NOT** kink or twist inlet hose.

Electronic Sensor Faucet 732416

Risk of Electrical Shock

- Disconnect power before servicing unit.
- Electric supply must be identical in voltage, cycle and phase to those specified in the specifications below. Unit must be plugged into a GFCI outlet.
- Always pull the plug – not the cord – when disconnecting from the outlet.
- **DO NOT** use if the power cord is worn or damaged. Power cords should only be replaced by qualified service technicians using genuine replacement parts.
- Check local codes for electrical requirements.
- **DO NOT** disassemble or modify unit.

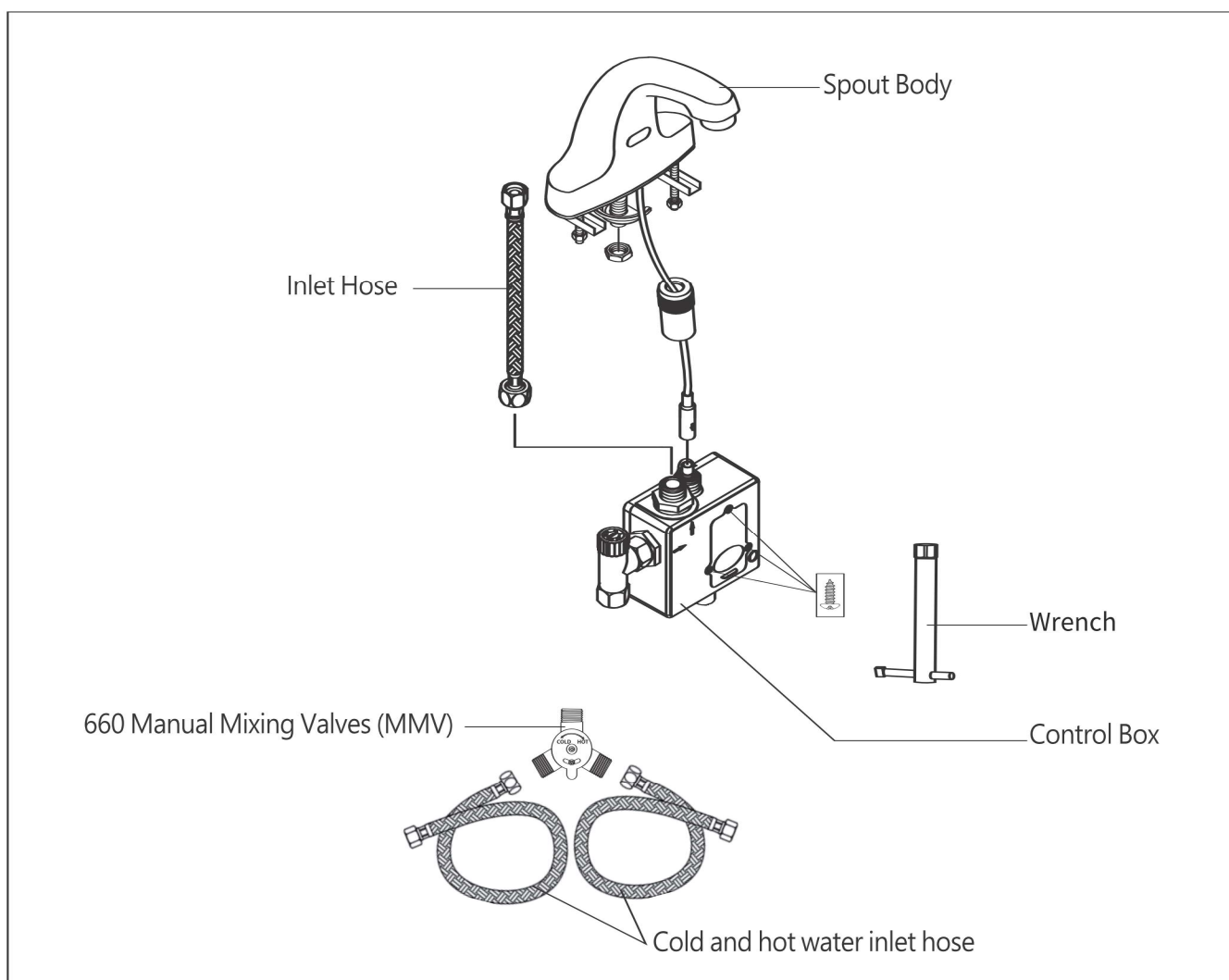
Required Tools:

1. Wrench
2. Phillips screw driver
3. Socket Wrench

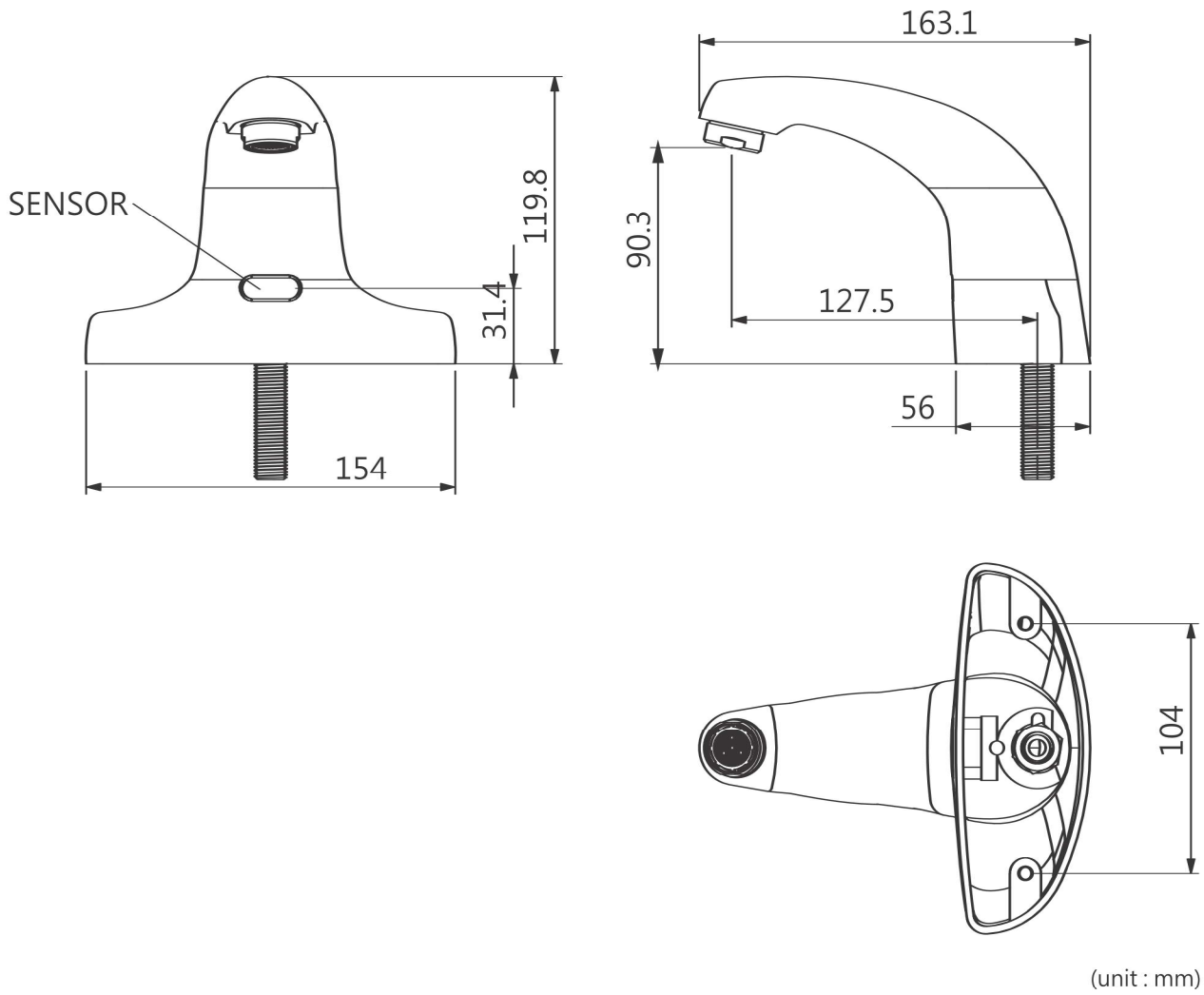
Power	DC:6V or AC:6V/1A
Low power stop voltage	4.0V±5%
Low power	red light stay lit
Solenoid valve	0.5W
Working pressure	1.0-7.5kg/cm ²
Working temperature	5°C-85°C
Sensing distance	5- 17cm(default 14cm)
Response time	0.3sec
Shut off time	1-2sec

Package Contents:

Box 1



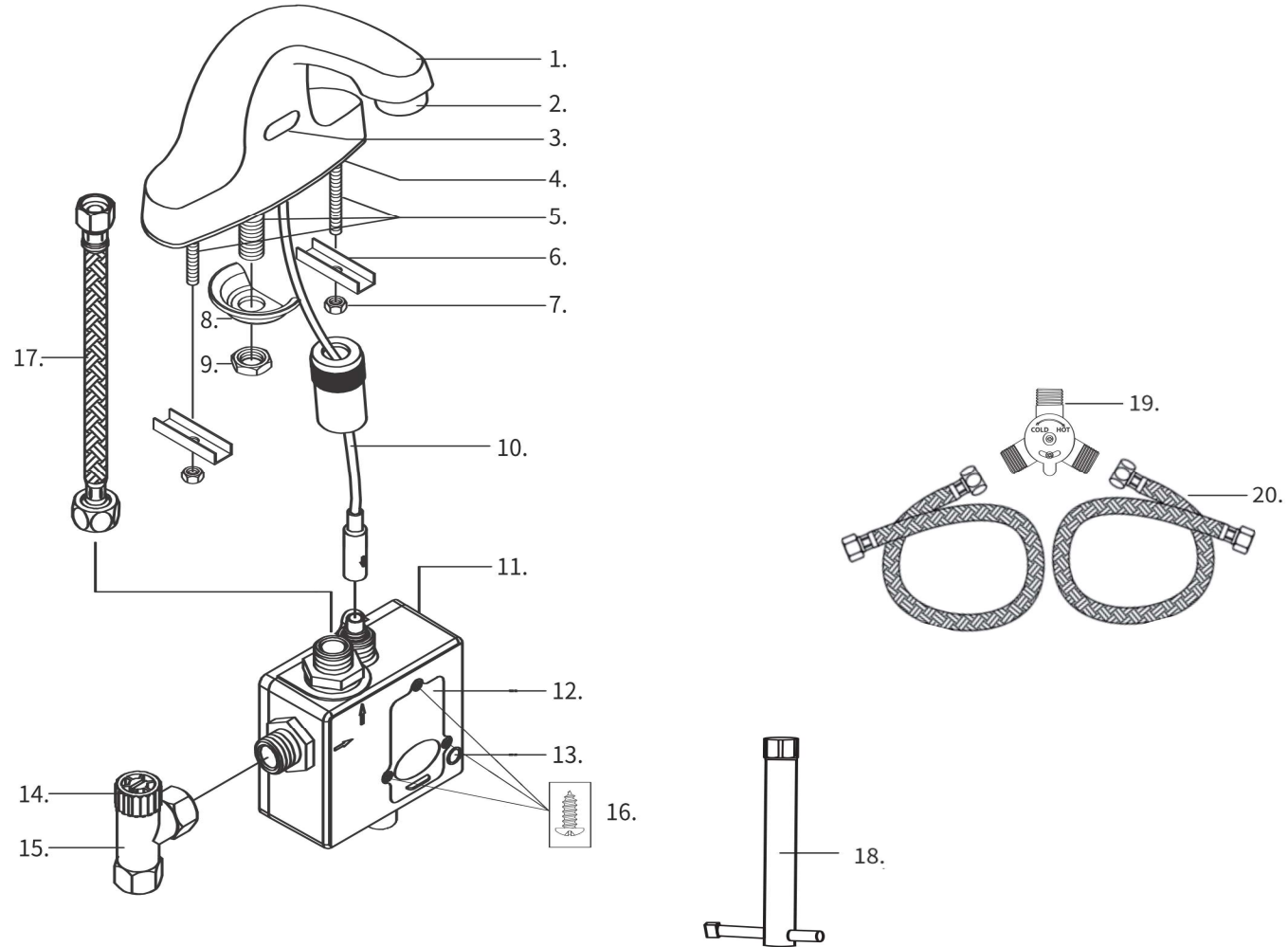
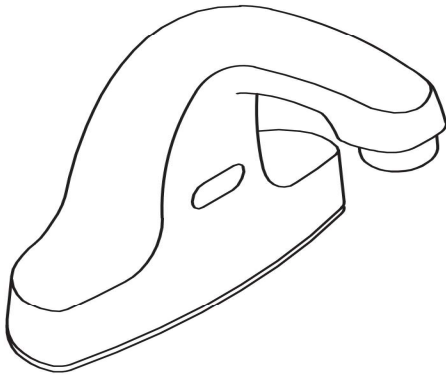
Electronic Sensor Faucet 732416



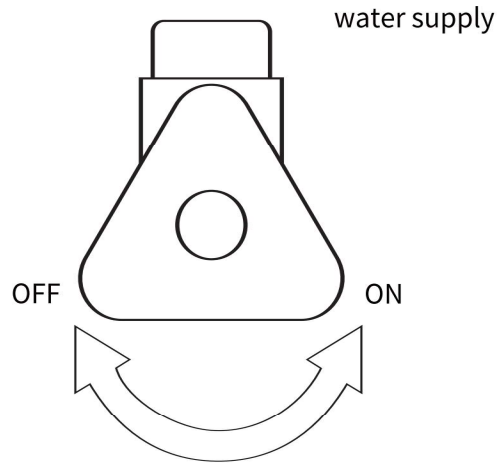
Assembly Instructions

Electronic Sensor Faucet 732416

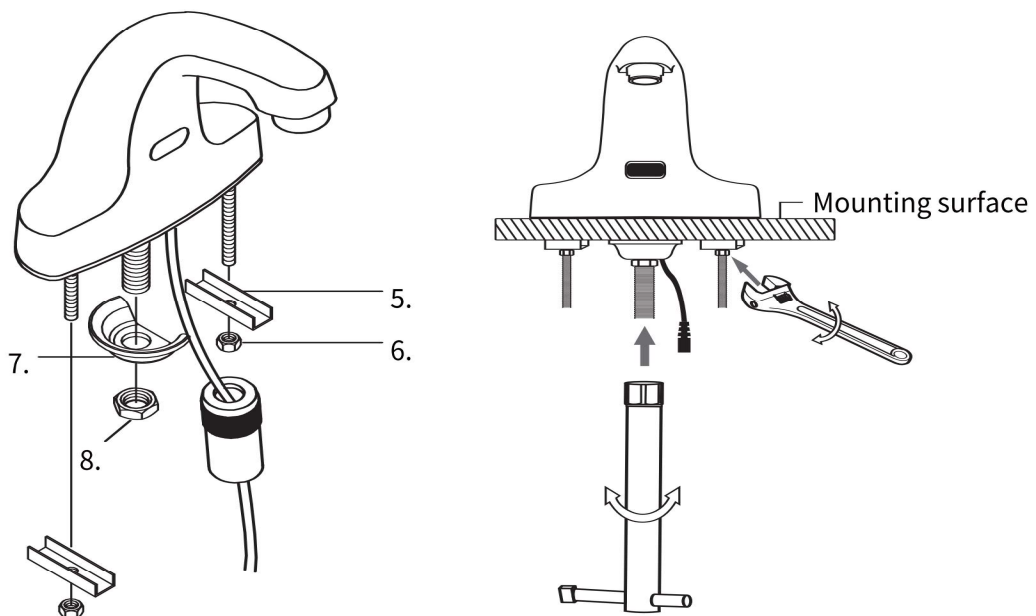
CONTENTS		
Ref.	Qty.	Description
1	1	Spout Body
2	1	Aerator
3	1	Sensor
4	1	Base Gasket
5	3	Shank
6	2	U Fixation Gasket
7	2	Fixation nut (small)
8	1	Fixation Gasket
9	1	Fixation nut (big)
10	1	Sensor Cable
11	1	Control Box
12	1	Battery Cover
13	1	ON/OFF button
14	1	Filter
15	1	Inlet water adaptor
16	3	Pan head screw
17	1	Inlet Hose
18	1	Socket Wrench
19	1	660 Manual Mixing Valves (MMV)
20	2	Cold and hot water inlet hose



Electronic Sensor Faucet 732416

1

Turn off water supply at main source.

2

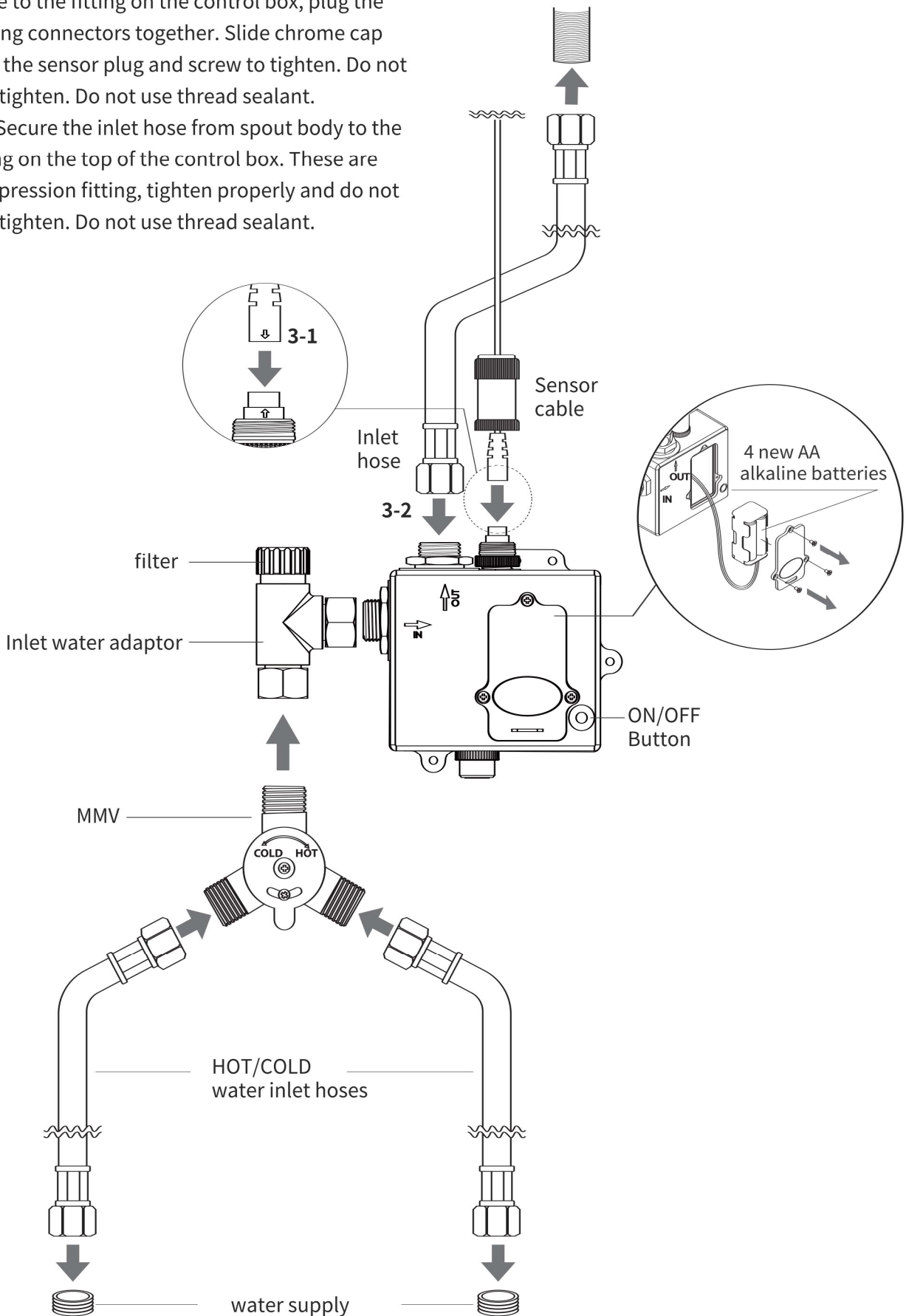
Thread sensor cable and shank through the mounting hole, make sure spout body & base gasket are flat on the mounting surface. Secure using fixation nuts & gaskets per this diagram.

Electronic Sensor Faucet 732416

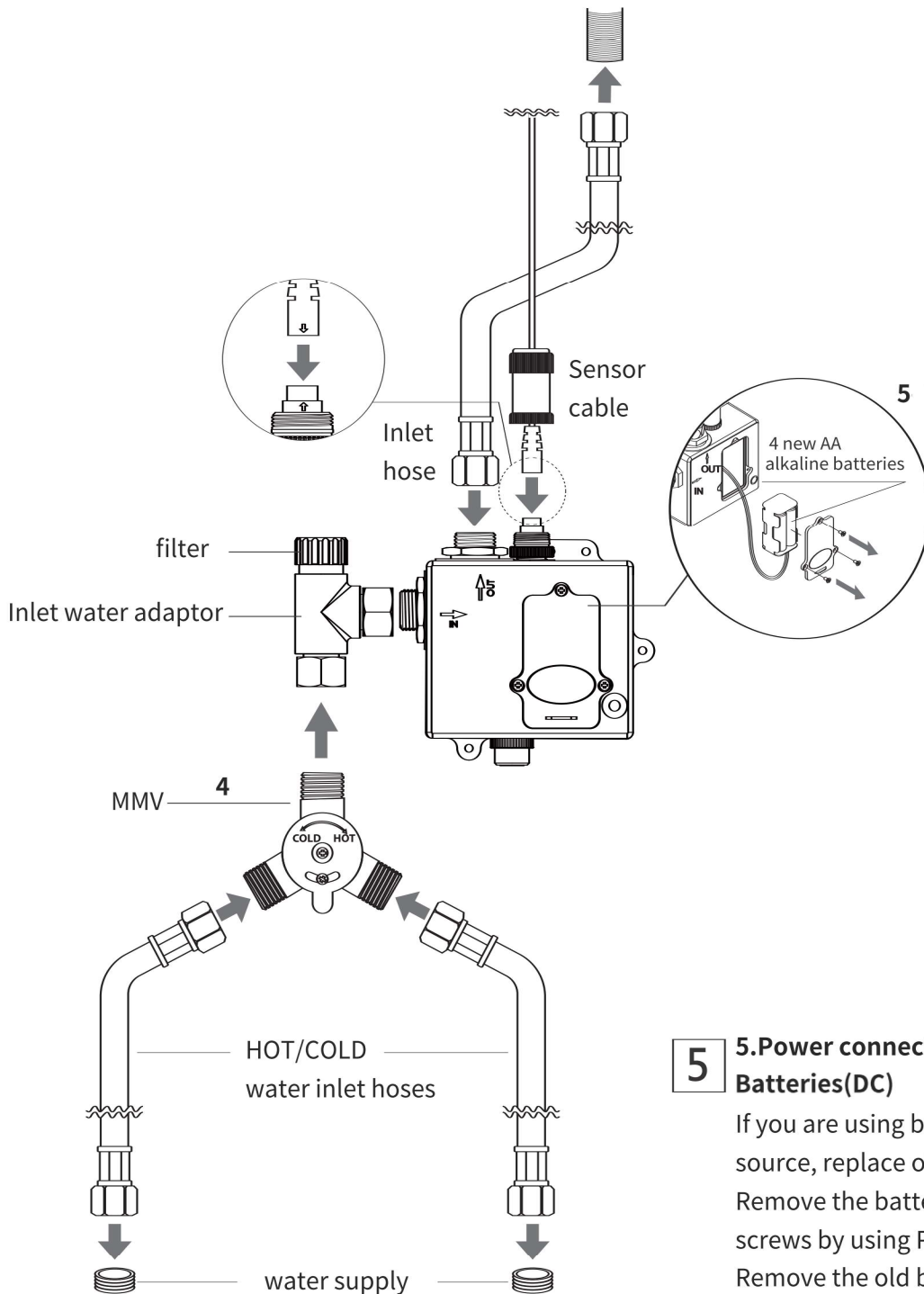
3 Sensor cable and inlet hose installation

3-1. Align the direction of the arrow of sensor cable to the fitting on the control box, plug the mating connectors together. Slide chrome cap over the sensor plug and screw to tighten. Do not overtighten. Do not use thread sealant.

3-2. Secure the inlet hose from spout body to the fitting on the top of the control box. These are compression fitting, tighten properly and do not overtighten. Do not use thread sealant.



Electronic Sensor Faucet 732416



4 Manual Mixing Valve installation

Tighten connect mixing valve to the filter of the control box. Do not overtighten. Do not use thread sealant. Tightly connect the hot water inlet hose (red) to the hot side of mixing valve and do the same for the cold water inlet hose (blue). These are compression fitting, tighten properly and do not overtighten. Do not use thread sealant. Do not bend the hoses.

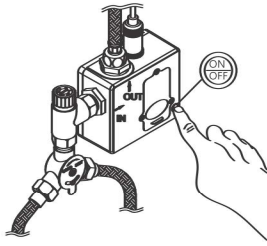
5 Power connection Batteries(DC)

If you are using batteries as your power source, replace old batteries if needed. Remove the battery cover's 3 pan head screws by using Phillips head screw driver. Remove the old batteries and install the 4 new AA batteries with the correct polarity. LED is flashing and turn off for last memory setting. Replace battery cover and screws.

Electronic Sensor Faucet 732416

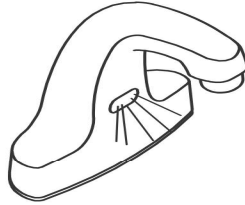
Sensor Distance Setting

1-1



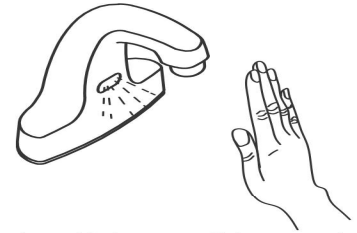
Press down ON/OFF button and hold for about 5 seconds.

1-2



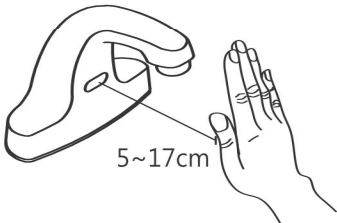
Wait for the red light turn on.

2



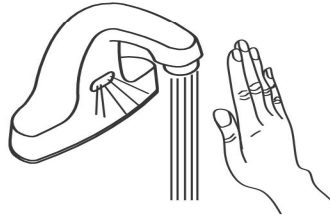
After the red light turns off, keep your hand close to the sensor at the desired sensor distance for about 5 seconds. At this time, the red light flashes for detection.

3



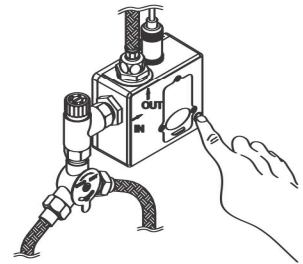
After the red light flashes and goes off, the setting is completed.
*Optimal sensing distance :14-15cm

4



Test whether the sensor is working normally.

5



If it cannot be sensed normally, please repeat step 1 action to start resetting the distance.

Operation

- A · Place hand under the spout. Water will flow for 30 seconds if user's hands remain within the sensor's range. Water flow will stop when hands are removed.
- B · Adjust the mixing valve to desired temperature after activating water flow.
- C · Keep sensor cover clean for optimal performance.
- D · Red light flashing on the sensor means low batteries
- E · Red light stay lit on the sensor means batteries are dead
- F · New AA batteries should last 400,000 on/off cycles.

TroubleShooting

Issue	Possible Cause	Suggested Action
Water continues to run (even after power to control box has been disconnect)	Debris in solenoid valve.	The filter on the control box may be clogged with debris. Turn off water supply and remove the black plastic cap and clean the stainless filter and replace. Turn on water supply and test.
	Faulty control box.	No audible "click" when press and hold on/off button, replace control box.
Faucet activates by itself (false triggers)	Sensor range too long.	Reduce Sensor detection range.
	Sunlight or other types of lighting may interfere with the distance sensing range.	Check surroundings for factors that contribute to Sensor range detection problems (bright lights, highly reflective surfaces, sunlight, etc.). If lighting is too bright you will need to lower the brightness or move the fixture.

Electronic Sensor Faucet 732416

Troubleshooting

Issue	Possible Cause	Suggested Action
No water flow when activated (red light stay lit or flashing on the sensor)	Red light flashing on the sensor means low batteries.	Remove the old batteries and replace with new alkaline batteries.
	Red light stay lit on the sensor means batteries are dead.	
	Water supply at the main source is turned off.	Turns on the water supply if closed.
	Kinked or twisted hoses.	Check that Inlet hoses are not kinked, twisted or pinched. Turn off water supply and loosen each hose and tighten properly make sure the hose does not twist, rotate or get kinked. Turn on water supply and test.
	Clogged filter.	The filter on the control box may be clogged with debris. Turn off water supply and remove the black plastic cap and clean the stainless filter and replace. Turn on water supply and test.
	Clogged aerator.	The aerator may be clogged with debris. Remove and clean properly.
	Sensor not working.	Place a hand in front of the sensor. If red light does not blink, replace the sensor.
Control box not working.	If the above appropriate actions do not correct problem, replace control box.	
Very Low Water Flow	Water supply at the main source is partially turned off.	Confirm that the water supply is fully opened.
	Clogged filter.	The filter on the control box may be clogged with debris. Turn off water supply and remove the black plastic cap and clean the stainless filter and replace. Turn on water supply and test.
	Clogged aerator.	The aerator may be clogged with debris. Remove and clean properly.
	Kinked or twisted hoses.	Check that Inlet hoses are not kinked, twisted or pinched. Turn off water supply and loosen each hose and tighten properly make sure the hose does not twist or rotate or get kinked. Turn on water supply and test.
	Clogged mixing valve.	Turn off water, place bucket under mixing valve, turn on water to verify water flow on hot and cold side. Replace if needed.