



MODEL PSS-3C
Mobile Privacy Screen

MODEL PSS-3
Stationary Privacy Screen

TOOLS REQUIRED:



(1) 9/16" wrench



(2) 7/16" wrenches



1 person assembly



OR



STEP
1

If you ordered a **Mobile Privacy Screen**, determine where you want the 2 locking casters positioned. With the 9/16" wrench, screw casters into legs

If you ordered a **Stationary Privacy Screen**, place each of the four crutch tips onto the ends of the leg feet.



STEP
2

Carefully lay the frame of the Privacy Screen down onto the ground. Insert the leg tubes into the frame and secure them with two 7/16" wrenches and hardware provided.

NOTE: Save the extra panel rod end clip for future use.



STEP
3

Once legs are installed, stand the unit upright and open the frame up so curtain panels can be installed.

WARNING



- Never stand or ride on this product.
- Keep casters free of debris.
- Do not hang anything on this product.
- Use caution when rolling over uneven surface.

HARDWARE INCLUDED (Not to scale)



x4 Casters

OR



x4 Crutch tips

x6 Curtain rods



x4 Bolts



x13 End clips

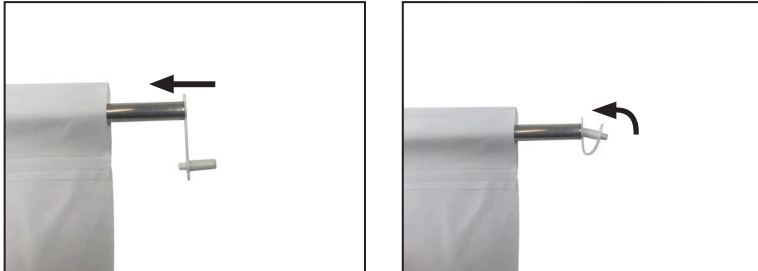


x4 Nuts





MODEL PSS-3C or PSS-3
Standard 3-Panel Privacy Screen
pg 2



STEP
4

Take one curtain out of the 3-pack, along with one aluminum rod and 2 end clips. Slide the aluminum rod into the top pocket. Insert the thick end of each clip into each end of the rod. Bend the clip in half and insert its thin end into the end currently in the rod.



STEP
5

Fit the tab into the hole on the frame and secure both ends of the rod. Repeat for the bottom rod.



STEP
6

Complete the remaining two panel curtains the same way. Adjust each one to provide even coverage.



Your 3-Panel Privacy Screen is ready for use.

