



Instructions Manual

C49R

Cat® Auto Ride-On Sweeper, 49" Cleaning Path



Model 641748



AVAILABLE EXCLUSIVELY AT GLOBAL INDUSTRIAL
GLOBALINDUSTRIAL.COM
US: 1-800-645-2986
Canada: 888-645-2986

WARNINGS

PLEASE READ THE INSTRUCTIONS CAREFULLY PRIOR TO USING THIS PRODUCT.

⚠ WARNING - to reduce the risk of fire, electrical shock, and/or injury/damage to persons or property:

- DO NOT operate the machine unless trained and authorized
- Keep batteries away from sparks and fire at all times. Batteries emit hydrogen gas which is explosive and flammable.
- This unit must be plugged into 3-Prong grounded outlet
- Flammable materials can cause an explosion or fire. DO NOT use flammable materials in tank or as cleaning agent in machine.
- Flammable materials or reactive metals can cause explosion or fire. DO NOT use this machine to clean up flammable or combustible spills
- Always turn off and unplug the machine prior to assembling, performing routine maintenance, or when not in use.
- This machine is intended for commercial and indoor use.
- DO NOT operate the unit if the cord/plug is damaged.
- DO NOT place objects on the unit or allow objects to obstruct the inlets or outlets.
- To reduce the risk of electric shock, DO NOT expose unit or power cord to moisture.
- DO NOT attempt to fix the machine by yourself. All repairs must be made by authorized personnel.
- DO NOT modify the machine.
- DO NOT touch moving parts. DO NOT wear loose fitting clothing while using or servicing the machine.
- Store the machine indoors only. The storage temperature of the machine must be from -13°F (-25°C) to 131°F (55°C).
- Empty all liquids in the machine before storing.
- Machine operating conditions: room temperature from 32°F (0°C) to 104°F (40°C); air humidity from 30% to 95%.
- DO NOT operate on inclines.

TECHNICAL SPECIFICATIONS

Clean width	49"
Center brush width	27.5"
Side brush width	15.4"
Forward speed	0-6.5 MPH
Work Capacity	24,000 sq.ft/hr
Maximum Surface Incline/Decline	18%
Drive motor	24V/800W
Roller brush motor	24V/600W
Dust collection motor	24V/380W
Dust shaker motor	24V/100W
Ride motor	2x24V/100W
Water tank capacity	7.9 gallon
Dust tank capacity	26.4 gallon
Filter size	7.5" x7.5" x14.5"
Machine Dimensions (L x W x H)	54.9" x 39.8" x 47.2"
Battery box (L x W x H)	19.4" x 13.9" x 1.2"
Rated battery voltage	4x6V/200Ah
Noise Level	<= 71 dBA
Batteries weight	70.5 lb./each
Net weight (without load and battery installed)	705.4 lb.

ORDER YOUR ACCESSORIES AND REPLACEMENT PARTS



Replacement Main Brush



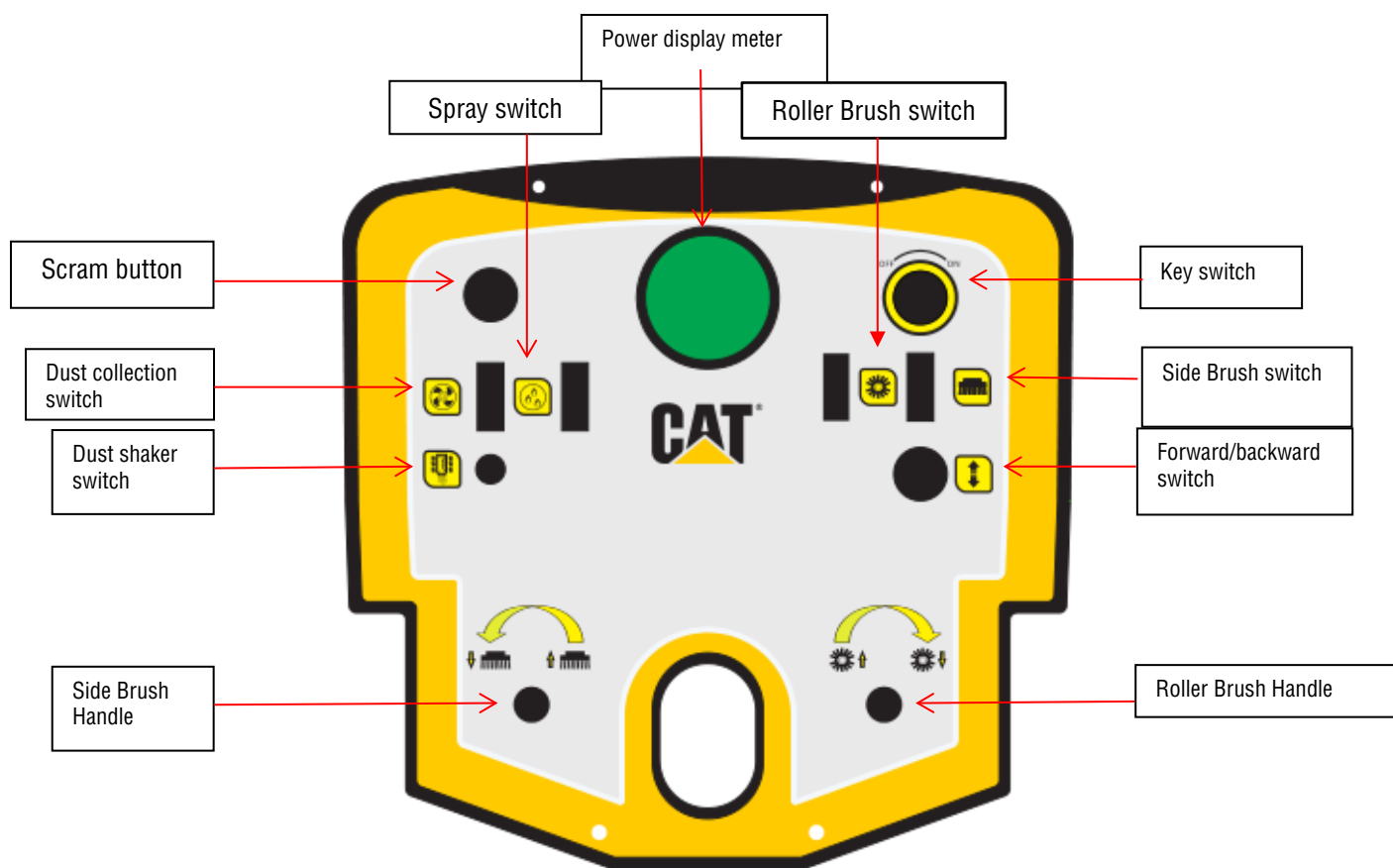
Replacement Filter



Replacement Side Brush

MACHINE COMPONENTS





MACHINE SET UP

Package Contents:

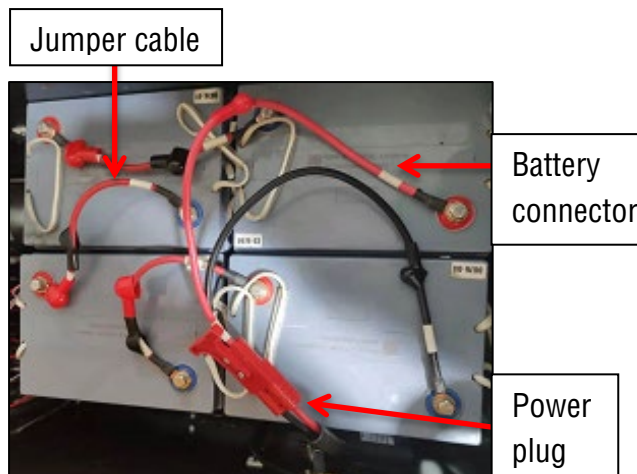
1. Machine
2. Battery
3. Charger

Machine Set-up/Operation Prior to each use

- 1) Ensure the 24V battery is connected
- 2) Ensure the working surface can support the weight of the machine

Connecting the batteries

1. Connect the batteries in series using the jumper cables to the positive "+" and negative "-" end.
2. Connect the red battery connector cable to the positive terminal pole "+" and the black cable to the negative terminal pole "-".



Charging the battery

Move the machine near the battery charger.

1. Make sure the water tank is empty; otherwise empty it completely.
2. Ensure the key switch is in the "OFF" position.
3. Lift water tank and secure it using the support rod
4. _Disconnect the battery plug and power plug, Connect the battery plug to the charging plug then connect the charger to the wall outlet. After charging complete, disconnect the battery plug and charging plug, reconnect the battery plug to the power plug.

- Red light = Fault. Check connection.
- Yellow light flashes = No battery connected.
- Yellow light on = Charging
- Green light = Fully charged



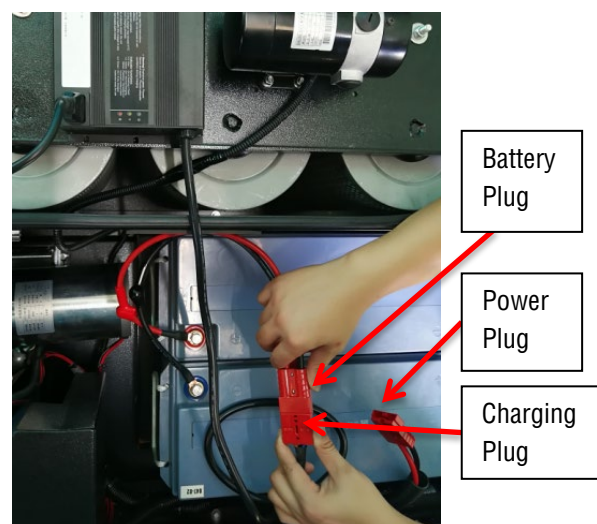
Power display meter

The power display meter shows the battery charge in 10% increments.



10 = 100%

Light flashing = the battery is completely discharged.



Filling Water Tank

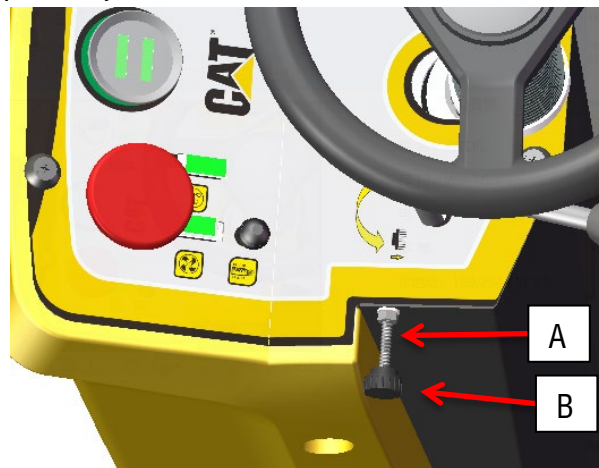
Unscrew the water tank cap and fill with clean water.



Adjustment of side brush height

The height of the side brushes must be adjusted according to the wear status of the side brushes. Please perform the following steps to adjust:

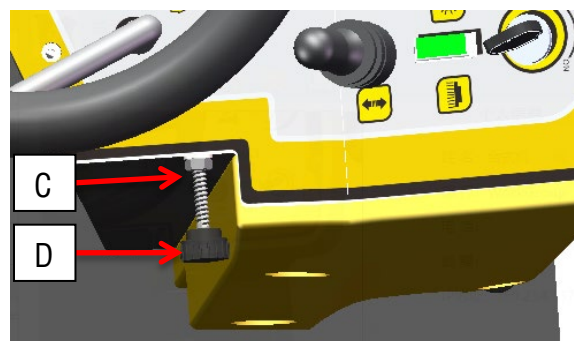
1. Loosen the hex nut (A) on the adjustment knob.
2. Rotate the adjustment knob (B) clockwise to increase the height of roller brush from the ground. Rotate counterclockwise to reduce the height of roller brush from the ground.
3. When the side brush reaches the desired height, tighten the hex nut (A).



Adjustment of roller brush height

The height of the roller brushes must be adjusted according to the wear status of the roller brushes. Please perform the following steps to adjust:

1. Loosen the hex nut (C) on the adjustment knob.
2. Rotate the adjustment knob (D) clockwise to increase the height of the side brush from the ground. Rotate counterclockwise to reduce the height of the side brush from the ground.
3. When the side brush reaches the desired height, tighten the hex nut (C).



Emptying Water Tank

1. Push the machine to the sewage discharge point, open the water tank, unscrew the cap of drain pipe, and drain the water to the sewer drain until all the water in the tank has been drained.
2. Tighten the cap of the drain hose and place the drain pipe in its original position.



Operation Instructions

1. User must remain seated during operation.
2. Turn the key of the key switch to the "ON" position. The power meter on the control panel will light up.
3. The machine is equipped with an electronic drive control system.
 - a. To move the machine forward, push the directional switch forward and step on the accelerator pedal.
 - b. To move the machine backward, push the directional switch backward and push down on the accelerator pedal.
 - c. To park the machine, push the directional switch into the neutral position. Always put the directional switch in the neutral position when the machine is not used.
4. The machine will stop moving if the driver gets off the seat.
5. Push the roller brush handle (on the right side) clockwise to lower the roller brush. Push the side brush handle (on the left side) counterclockwise to lower the side brush.
6. Push the brush switch to activate both the roller brush and side brush at the same time.
7. Push the dust collection switch to activate the dust collection motor.
8. Push the water spray switch to activate electromagnetic valve and water pump.
9. Push the dust collection switch to activate the dust shaker motor.

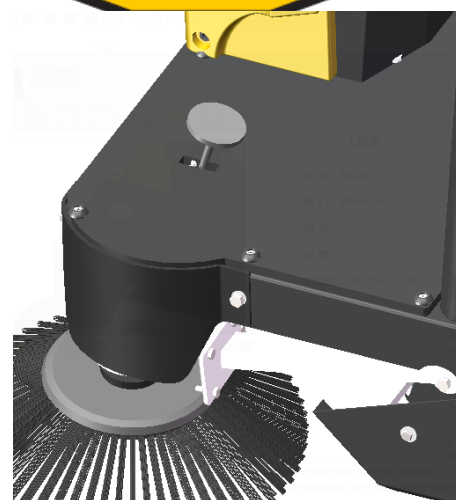


Accelerator pedal



CAUTION

- To stop the machine, release your foot from the accelerator pedal. The machine will stop on its own. The left foot pedal is NOT the brakes. The left foot pedal is the Dust Pan Foot Lever. Step on the Dust Pan Foot Lever for picking up large-sized garbage.



Post Operation

Perform the below steps after operating the machine and before storing:

1. Release the accelerator pedal, turn off the brush, dust collection and spray buttons. Wait for the machine motors to stop.
2. Rotate the roller brush handle (on the right side) counterclockwise to lift the roller brush. Rotate the side brush handle (on the left side) clockwise to lift the side brush.
3. Move the machine to the designated area for dumping garbage. Open the dust box latch and remove the box. Empty the garbage. Then mount the dust box back and buckle the latch.
4. Move the machine to the designated parking area, release the accelerator pedal, and push the directional switch to the central/neutral gear. Wait for the machine to stop completely. Turn the key switch to the "OFF" position to power down the machine and then pull the key out from the instrument panel.



CAUTION

Do not leave the machine unattended with the switch key in the machine. In addition, do not park the machine in an open area or on an uneven floor.

MACHINE STORAGE

Store the machine indoor in a dry location with the squeegee and pad/driver raised off the floor.

Turn off the brush and vacuum using the touch screen before shutting off the machine.

Always drain the solution and recovery tank fully before storing, especially when storing in a cold location.

MAINTENANCE

⚠ WARNING

Before performing any maintenance on the machine, make sure that the power is turned off or the batteries are disconnected. Repairs are to be completed by authorized service centers only. Any repairs by unauthorized persons will void warranty.

Cleaning Filter Cartridge

1. After each operation, press and hold the Dust Shaker Switch for 10 seconds to remove dust from the cartridge;



2. If you feel a significant decline in suction after a period of time and the machine improves by using the dust shaking function, remove all six filter cartridges and clean them by using compressed air until dust is no longer escaping from the cartridge. Once complete, mount all six cartridges back to their original location.

Cleaning Dust Box

1. After each operation, move the machine to a designated garbage area.
2. Remove the dust box and empty the garbage. Check for blockages prior to mounting back.

Motors

Motors should be checked every 250 hours. Turn the brush on and off to ensure the motor is working properly.

BATTERY MAINTENANCE

- Keep the top of the battery and the terminals free from corrosion. A mix of baking soda and water solution helps keep the batteries corrosion free. **DO NOT ALLOW THE BAKING SODA/WATER SOLUTION TO ENTER THE BATTERY CELLS.**
- Use a wire brush with the baking soda solution to properly clean the battery posts and connections.
- Check battery connections for wear and loose terminals. Replace if necessary.

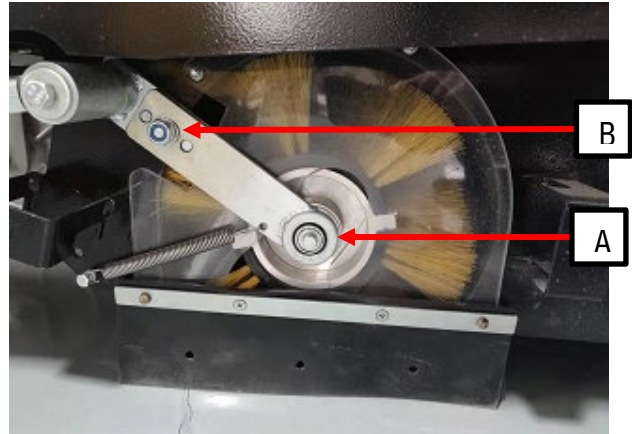
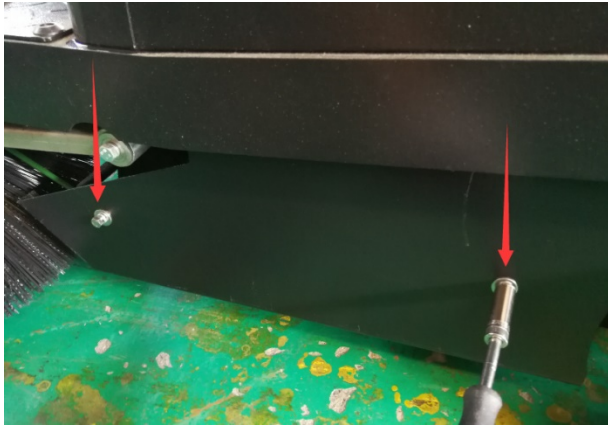
Disposal

:

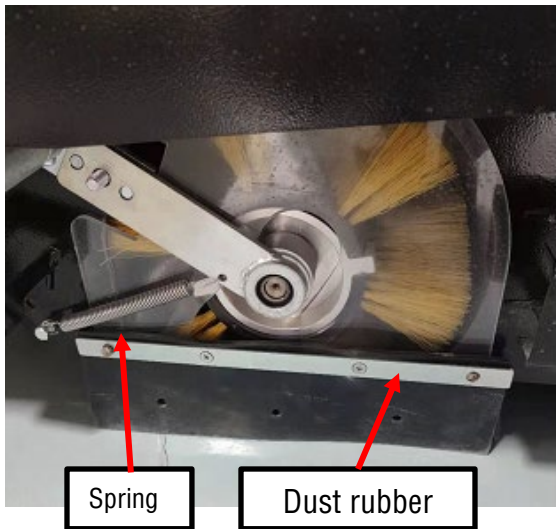
- Old batteries must be disposed of in compliance with the local specific regulations.
- Never dispose of old batteries with municipal waste.

Replacing Roller Brushes

Remove the two bolts located on the left side panel
Remove screw (A), remove nut (B), and remove the cover.



Remove the nut, spring, and the dust rubber. Then pull out the roller brush.



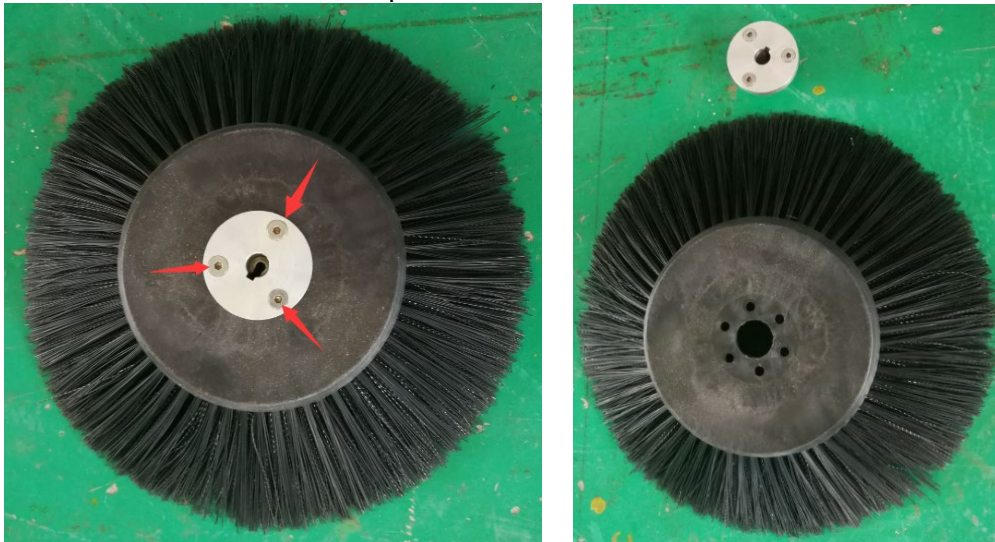
Replace the roller brush and repeat the above steps in reverse order.

Replacing Side Brushes

1. Remove the bolt at the bottom of the side brush



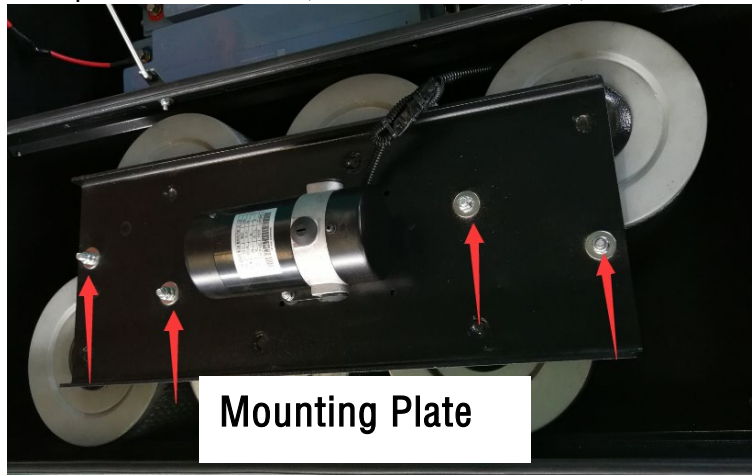
2. Remove these 3 bolts at the top of the side brush.



3. Replace the side brush and repeat the above steps in reverse order.

Replacing Filters

1. Open the water tank, remove these 4bolts, then remove the mounting plate



2. Replace the six filters and repeat the steps in reverse order.



3. It is recommended to replace the filters every eight months

TROUBLESHOOTING

PROBLEM	Solution
Machine won't turn on	<ol style="list-style-type: none"> 1. Check if there is power in the battery 2. Make sure the machine connection plug is connected to the battery connection plug. 3. Check if the key switch is in the "ON" position. 4. Check if the first fuse in the fuse box is blown.
Little to no water from water spray	<ol style="list-style-type: none"> 1. Check if there is water in the water tank. 2. Check if the solenoid valve or water pump is normally open. 3. Clean the filter.
Floor is not getting clean	Check the wear conditions of the cleaning brush and replace if necessary.
Vacuum motor does not work	<ol style="list-style-type: none"> 1. Check if the corresponding contactor of the dust collection motor works normally. 2. Check if the third fuse in the fuse box is blown. 3. Check if the duct collection motor switch is in sound condition and switches without issues.
Roller brush motor does not work	<ol style="list-style-type: none"> 1. Check if the corresponding contactor of the brush plate motor works normally. 2. Check if the 60A fuse on the electrical mounting board is blown. 3. Check if the brush plate motor switch is in sound condition and switches without issues.
Vibration motor does not work	<ol style="list-style-type: none"> 1. Check if the corresponding contactor of the shaker motor works normally. 2. Check if the second fuse in the fuse box is blown. 3. Check if the entire motor switch is in sound condition and switches without issues.
Roller brush does not turn	<ol style="list-style-type: none"> 1. Check if the roller motor is working properly. 2. Check if two V-belts driven by the brush motor are intact without fracture.

Side brush does not turn	<ol style="list-style-type: none">1. Check if the corresponding contactor of the side brush plate motor can work normally.2. Check if the fourth fuse in the fuse box is blown.3. Check if the switch of the brush plate motor is in sound contact
--------------------------	--

GLOBAL EQUIPMENT COMPANY INC.

FLOOR CARE EQUIPMENT WARRANTY

1. LIMITED WARRANTY

Global Equipment Company Inc. (DBA Global Industrial) ("Global") hereby warrants to you, the original purchaser and end user ("you" or "your"), that the product that you purchased which accompany this Limited Warranty ("Product") shall be free from defects in materials and workmanship under normal use consistent with the accompanying documentation for the specified warranty duration set forth below and commencing upon the date of purchase (the "Warranty Period"):

Product	Plastic Housing	Motor	All Other Parts	Battery	Labor	Travel
Electric Corded Floor Scrubbers	8 Years	2 Years	1 Year	n/a	1 Year	6 Months
Battery Operated Floor Scrubbers	8 Years	2 Years (or 2000 hrs.)	1 Year (or 1000 hrs.)	1 Year	1 Year	6 Months
Ride-On Battery Operated Floor Scrubbers & Sweepers	8 Years	2 Years (or 2000 hrs.)	1 Year (or 1000 hrs.)	1 Year	1 Year	6 Months

2. WARRANTY SERVICE

Pursuant to this Limited Warranty, Global will, at its option, (i) repair the Product using new or reconditioned parts or (ii) replace the Product with a new or reconditioned product. For warranty service, you must first contact Global, by telephone at (800) 645-2986 (US) or (888) 645-0878 (Canada) to confirm that such Products are covered by this Limited Warranty.

Repaired and replaced Products shall be subject to the balance of the Warranty Period otherwise applicable.

Any reconditioned parts used by Global shall be subject to all the same provisions as otherwise applicable to new parts.

If Global determines that you should return a Product, you shall obtain from Global a return materials authorization ("RMA") number and shipping instructions prior to any shipment of such Product to Global, and you must include such RMA number with any corresponding Product shipment, along with a true and correct copy of the original receipt showing the date of Product purchase by you, and a detailed, written description of any associated Product problems.

Please note that you are responsible for all shipping charges incurred in returning a Product for exchange or repair. For one year from date of purchase, Global shall pay for return shipping of repaired and/or replaced Products to addresses within the continental United States and Canada only. If Global determines that any Product is not covered by this Limited Warranty, you must pay all parts, labor charges and return shipping for such Product.

THE FOREGOING DESCRIBES THE SOLE LIABILITY OF GLOBAL, AND YOUR SOLE REMEDY, FOR ANY BREACH OF THIS LIMITED WARRANTY.

3. WARRANTY EXCLUSIONS AND LIMITATION OF LIABILITY

This Limited Warranty does not cover (i) defects or damages resulting from acts of God, casualty, freight damage, accident, misuse, abuse, negligence, overloading, usage of non-approved chemicals or cleaning agents, engine oil and pump lubricant, modification, service or repair by other than Global or its independent third party service providers; (ii) any Product for which the serial numbers have been removed, modified or defaced.; (iii) normal wear and tear; (iv) damage to or loss of repaired or replaced products during shipping by Global except when such

damage or loss is caused by poor or inadequate packaging by Global; or (v) products purchased or transported or exported outside the continental United States or Canada. For the avoidance of doubt, this Limited Warranty shall be null and void for any product exported or transported outside the continental United States and Canada.

UNDER NO CIRCUMSTANCES WILL GLOBAL BE LIABLE FOR ANY LOSS OF USE, INTERRUPTION OF BUSINESS OR ANY INDIRECT, SPECIAL, INCIDENTAL, PUNITIVE OR CONSEQUENTIAL DAMAGES OF ANY KIND (INCLUDING LOST PROFITS) REGARDLESS OF THE FORM OF ACTION WHETHER IN CONTRACT, TORT (INCLUDING NEGLIGENCE), STRICT PRODUCT LIABILITY OR OTHERWISE, EVEN IF GLOBAL HAS BEEN ADVISED OF THE POSSIBILITY OF SUCH DAMAGES. IN NO EVENT SHALL THE TOTAL LIABILITY OF GLOBAL HEREUNDER EXCEED THE GREATER OF \$50 OR THE AMOUNT YOU ACTUALLY PAID FOR THE PRODUCT GIVING RISE TO SUCH LIABILITY, REGARDLESS OF THE CAUSE OF ACTION, IN CONTRACT, TORT, STRICT LIABILITY OR OTHERWISE. NOT ALL JURISDICTIONS ALLOW SUCH LIMITATIONS OF DAMAGES SO THE FOREGOING LIMITATIONS MAY NOT APPLY TO YOU.

4. WARRANTY DISCLAIMER AND LIMITATIONS
EXCEPT AND TO THE EXTENT EXPRESSLY SET FORTH ABOVE THERE ARE NO WARRANTIES, EXPRESS OR IMPLIED, INCLUDING BUT NOT LIMITED TO, ANY WARRANTIES OF MERCHANTABILITY OR FITNESS FOR A PARTICULAR PURPOSE AND GLOBAL EXPRESSLY DISCLAIMS ALL WARRANTIES NOT STATED HEREIN.

EXCEPT AND TO THE EXTENT EXPRESSLY SET FORTH ABOVE, THE PRODUCTS ARE PROVIDED ON AN "AS IS" BASIS, AND GLOBAL MAKES NO ADDITIONAL WARRANTIES, EXPRESS, IMPLIED, ARISING FROM COURSE OF DEALING OR USAGE OF TRADE, OR STATUTORY, AS TO THE PRODUCTS OR ANY MATTER WHATSOEVER. THIS IS A LIMITED WARRANTY AND IS THE ONLY WARRANTY MADE BY GLOBAL. THE AGENTS, EMPLOYEES, DISTRIBUTORS, AND DEALERS OF GLOBAL ARE NOT AUTHORIZED TO MAKE MODIFICATIONS TO THIS LIMITED WARRANTY, OR MAKE ADDITIONAL WARRANTIES BINDING ON GLOBAL. ACCORDINGLY, ADDITIONAL STATEMENTS SUCH AS DEALER ADVERTISING OR PRESENTATION, WHETHER ORAL OR WRITTEN, DO NOT CONSTITUTE WARRANTIES BY GLOBAL AND SHOULD NOT BE RELIED UPON. GLOBAL DOES NOT WARRANT THAT

THE PRODUCTS WILL OPERATE WITHOUT FAILURE, OR THAT THE PRODUCTS WILL MEET YOUR NEEDS OR EXPECTATIONS. NOT ALL JURISDICTIONS ALLOW SUCH WARRANTY LIMITATIONS SO THE FOREGOING LIMITATIONS MAY NOT APPLY TO YOU.

5. CHOICE OF LAW AND JURISDICTION

FOR PURCHASES WITHIN THE CONTINENTAL US -

This Limited Warranty shall be subject solely to the laws of the State of New York as applied to contracts entered into in the State of New York between New York residents. Any dispute arising hereunder shall be subject to the sole jurisdiction of the State and Federal Courts located in Nassau County, New York. The parties hereby consent to the personal jurisdiction of such courts.

FOR PURCHASES WITHIN CANADA -

This Limited Warranty shall be subject solely to the laws of the Province of Ontario. Any dispute arising hereunder shall be subject to the sole jurisdiction of Ontario, Canada. The parties hereby consent to the personal jurisdiction of such courts.



GLOBALINDUSTRIAL.COM 1-800-645-1232

© 2021 Caterpillar. All rights reserved. CAT, CATERPILLAR, LET'S DO THE WORK, their respective logos, "Caterpillar Yellow", the "Power Edge" and Cat "Modern Hex" trade dress as well as corporate and product identity used herein, are trademarks of Caterpillar and may not be used without permission. Global Industrial™ a licensee of Caterpillar Inc.