

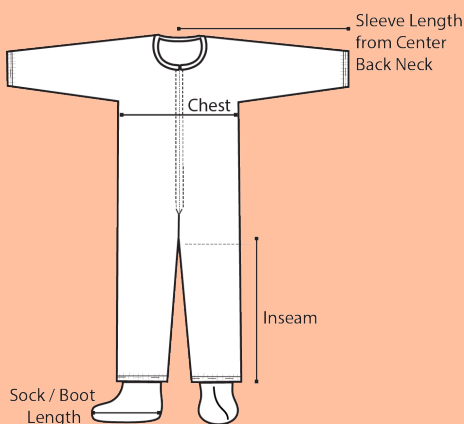
PRODUCT INFORMATION

DuPont™ Tychem® 2000 Coverall. Collar. Stormflap. Elastic Wrists and Ankles. Storm Flap with Adhesive Closure. Taped Seams. Yellow.



ATTRIBUTES

Full Part Number	QC125TYLxx0004yy (xx=size;yy=option code)
Fabric/Materials	TYCHEM® 2000
Design	Coverall w/ Elastic Wrists and Ankles
Seam	Taped
Color	Yellow
Quantity/Box	4 per case
Sizes	MD, LG, XL, 2X, 3X, 4X, 5X
Option Codes	00



SIZE TABLE

SIZE	SLEEVE LENGTH	CHEST WIDTH	INSEAM	FITS CHEST	FITS HEIGHT
MD	33 3/4	24 1/4	27 1/2	35 1/4 - 38 3/4	5'3" - 5'7"
LG	35	25 3/4	28 1/2	38 1/4 - 41 3/4	5'5" - 5'9"
XL	36 1/2	27 1/4	29	41 1/4 - 44 3/4	5'8" - 6'2"
2X	38 1/4	28 3/4	30	44 1/4 - 47 3/4	6'0" - 6'4"
3X	38 1/2	30 1/4	31	47 1/4 - 50 3/4	6'2" - 6'4"
4X	39 1/2	32	32 1/2	50 3/4 - 54 1/4	6'4" - 6'7"
5X	40 1/2	33 1/2	33 1/2	53 3/4 - 57 1/4	6'7" - 6'10"

PHYSICAL PROPERTIES

PROPERTY	TEST METHOD	TYPICAL RESULT
Thickness	ASTM D1777	10 mils
Basis Weight .	ASTM D3776	2.5 oz/yd ²
Burst Strength - Mullen	ASTM D3786	68 psi
Tear Resistance - Trap Tear (MD)	ASTM D5587	6.4 lb _f
Tear Resistance - Trap Tear (CD)	ASTM D5587	5 lb _f
Breaking Strength -- Grab (MD).	ASTM D5034	39 lb _f
Breaking Strength-Grab (CD).	ASTM D5034	43 lb _f
Wearing Apparel Flammability	16 CFR 1610	Class 1

WARNING

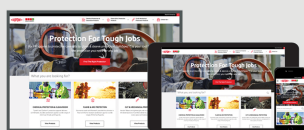
*Serged and bound seams are degraded by some hazardous liquid chemicals, such as strong acids, and should not be worn when these chemicals are present.

*CAUTION: This information is based upon technical data that DuPont believes to be reliable. It is subject to revision as additional knowledge and experience are gained. DuPont makes no guarantee of results and assumes no obligation or liability in connection with this information. It is the user's responsibility to determine the level of toxicity and the proper personal protective equipment needed. The information set forth herein reflects laboratory performance of fabrics, not complete garments, under controlled conditions. It is intended for informational use by persons having technical skill for evaluation under their specific end-use conditions, at their own discretion and risk. Anyone intending to use this information should first verify that the garment selected is suitable for the intended use. In many cases, seams and closures have shorter breakthrough times and higher permeation rates than the fabric. Please contact DuPont for specific data. If fabric becomes torn, abraded or punctured, or if seams or closures fail, or if attached gloves, visors, etc. are damaged, end user should discontinue use of garment to avoid potential exposure to chemical. Since conditions of use are outside our control, we make no warranties, express or implied, including, without limitation, no warranties of merchantability or fitness for a particular use and assume no liability in connection with any use of this information. This information is not intended as a license to operate under or a recommendation to infringe any patent or technical information of DuPont or others covering any material or its use.

Cellosolve® and Selexol™ are registered trademarks of Dow Chemicals Company. Skydrol® is a registered trademark of Solutia.

DuPont™ SafeSPEC™ - We're here to help

Our powerful web-based tool can assist you with finding the appropriate DuPont garments for chemical, controlled environment, thermal and mechanical hazards.



safespec.dupont.com



DuPont Personal Protection
safespec.dupont.com
dpp.dupont.com

DuPont Personal Protection

@DuPontPPE

Connect with us



CREATED ON: FEBRUARY 10, 2022

© 2021 DuPont. All rights reserved. DuPont™, the DuPont Oval Logo, and all trademarks and service marks denoted with ™, SM or ® are owned by affiliates of DuPont de Nemours, Inc. unless otherwise noted.