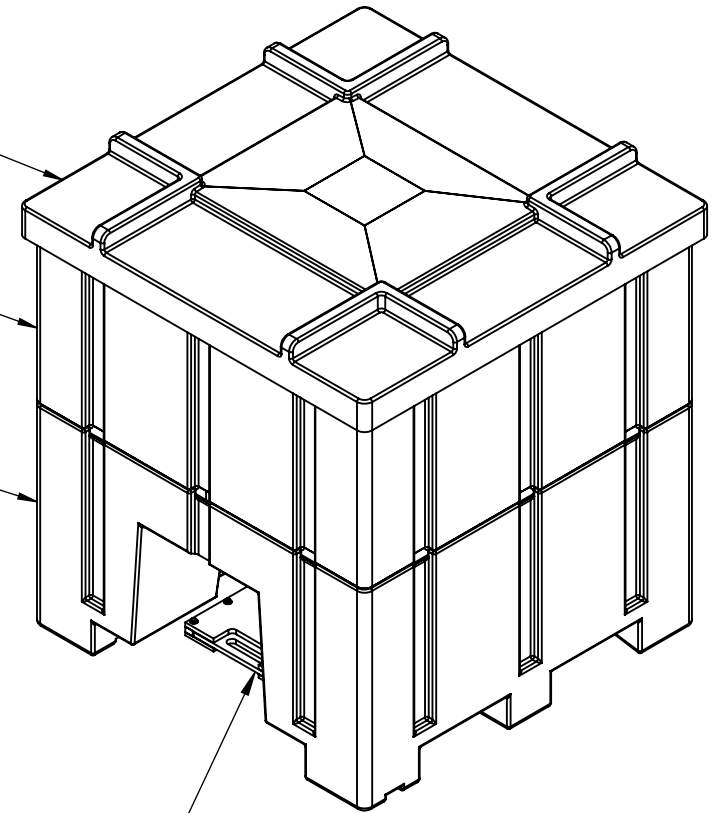


COVER ONLY
DRAWING

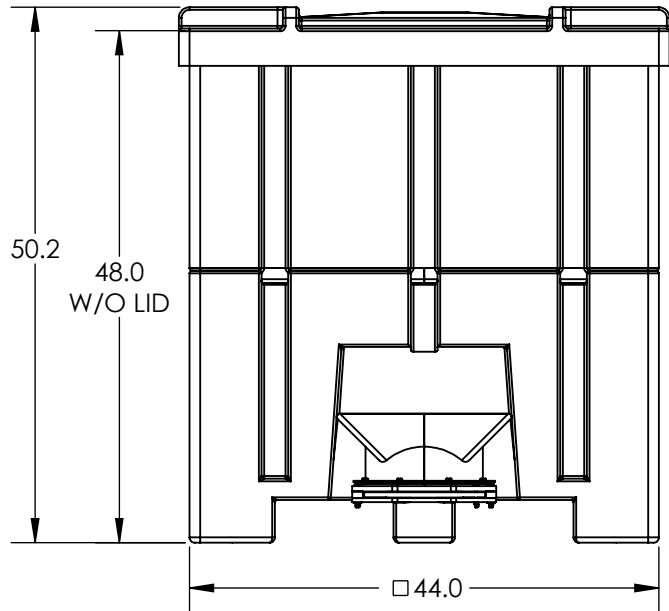
BOTTLE ONLY
DRAWING

BASE ONLY
DRAWING



SLIDEGATE OPTIONS:

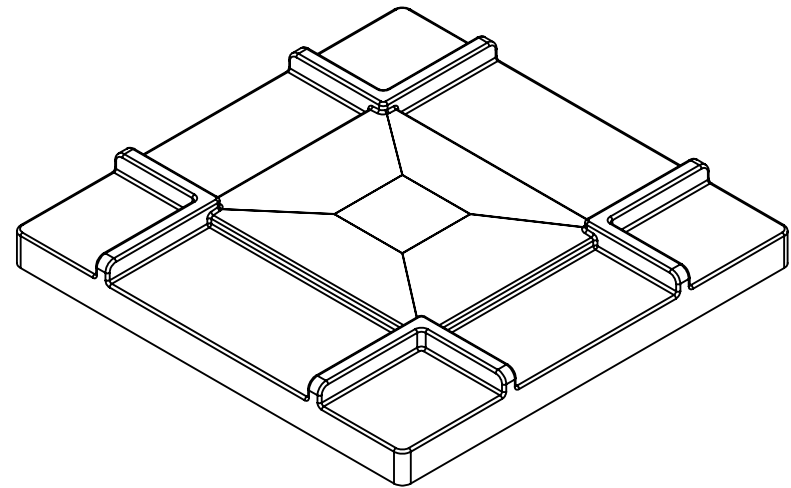
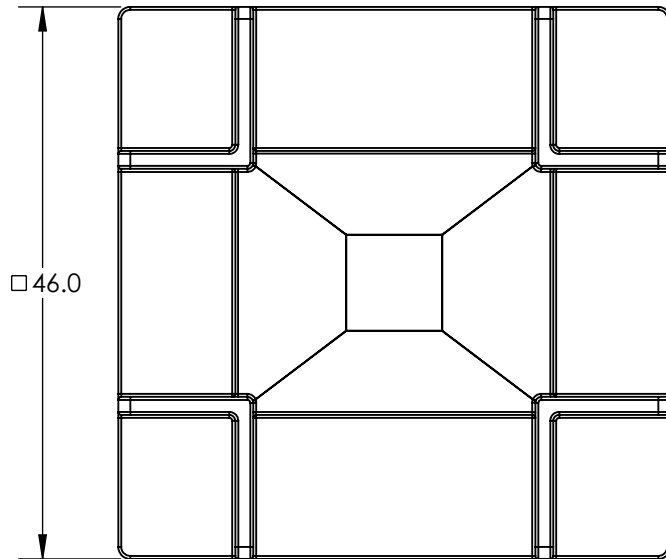
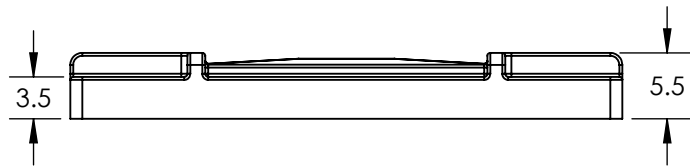
- STANDARD SLIDEGATE - [34701850](#)
- QUICK SLIDEGATE - [35902614](#)
- SLIDEGATE W/COLLAR - [34702005](#)



4	1	34701850	ASM SLIDE GATE 10IN 8090STD
3	1	6392400M__01	COVER 8090 HPR
2	1	6392100M__01	BASE 8090 HPR
1	1	6375300M__01	HPR 35CF 8090 BTM DSCRG OT

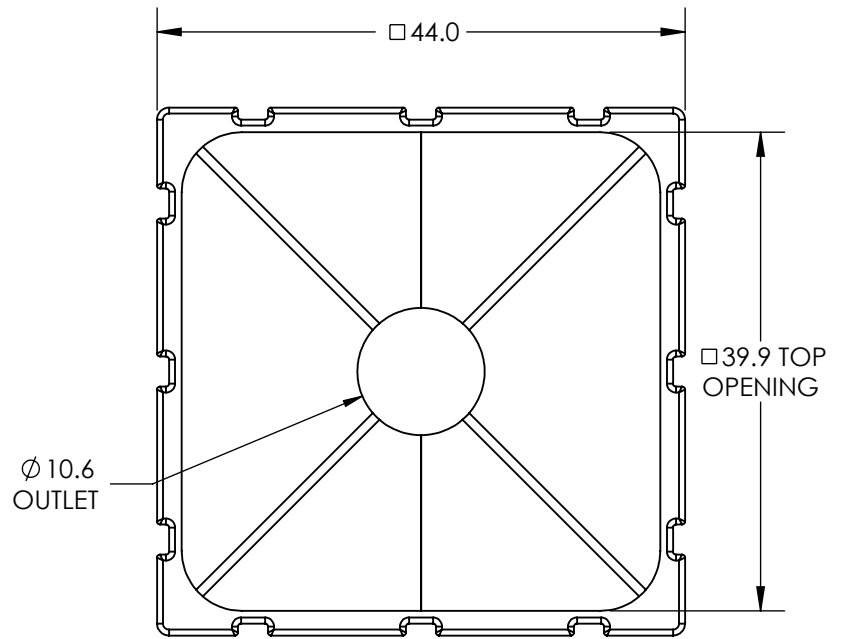
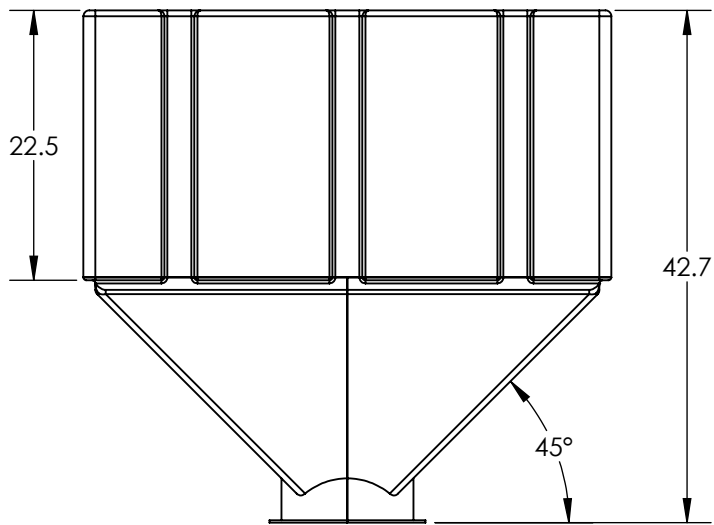
ITEM NO.	QTY.	PART NUMBER	DESCRIPTION	
DO NOT SCALE		DRAWN BY	TITLE:	REVISION
STATUS: Released		IGG	ASM 35CF 8090 HPR OT STD SLGT	A
© SNYDER INDUSTRIES INC., 2015			PART NO.	ENG. ID.
ALL DIMENSIONS, DESIGNS, AND INFORMATION ON THIS PRINT MUST BE CONSIDERED PROPRIETARY TO SNYDER INDUSTRIES, INC. AND MAY NOT BE USED, COPIED, OR DISTRIBUTED WITHOUT WRITTEN PERMISSION OF AN OFFICER (OR HIS AGENT) OF THE FIRM.			6375300M	A004614
SHEET 1 OF 1				

ALL DIMENSIONS ARE IN INCHES, NOMINAL, & SUBJECT TO CHANGE WITHOUT NOTICE.
ALL DIMENSIONS ON ROTATIONAL MOLDED PARTS ARE SUBJECT TO A ± 3% TOLERANCE.




ALL DIMENSIONS ARE IN INCHES, NOMINAL, & SUBJECT TO CHANGE WITHOUT NOTICE.
 ALL DIMENSIONS ON ROTATIONAL MOLDED PARTS ARE SUBJECT TO A \pm 3% TOLERANCE.

DO NOT SCALE		DRAWN BY	BONAR PLASTICS WWW.BONARPLASTICS.COM	TITLE:	REVISION
STATUS:	Released	IGG		COVER 8090 HPR	A
© SNYDER INDUSTRIES INC., 2015					SHEET 1 OF 1
ALL DIMENSIONS, DESIGNS, AND INFORMATION ON THIS PRINT MUST BE CONSIDERED PROPRIETARY TO SNYDER INDUSTRIES, INC. AND MAY NOT BE USED, COPIED, OR DISTRIBUTED WITHOUT WRITTEN PERMISSION OF AN OFFICER (OR HIS AGENT) OF THE FIRM.			PART NO.	ENG. ID.	
			6392400M__01	D003619	

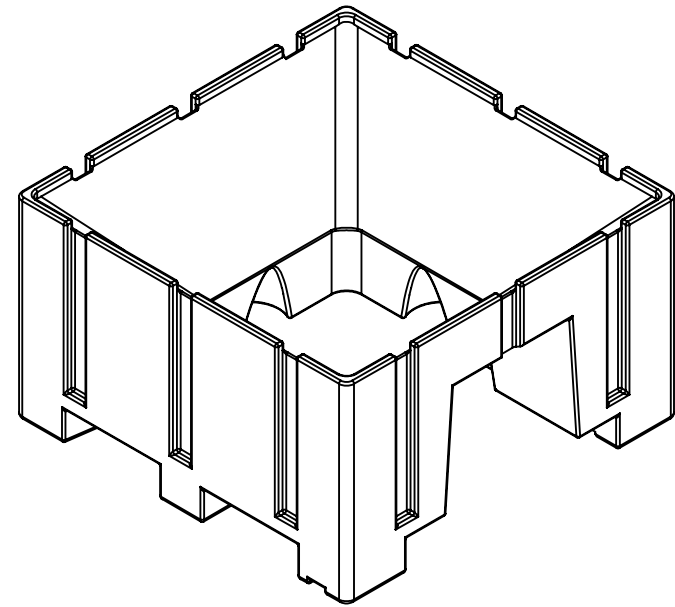
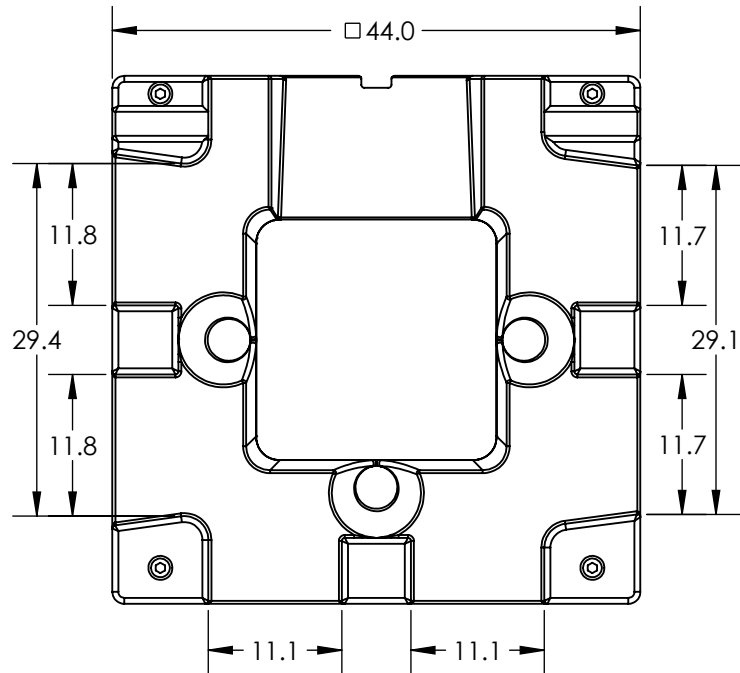
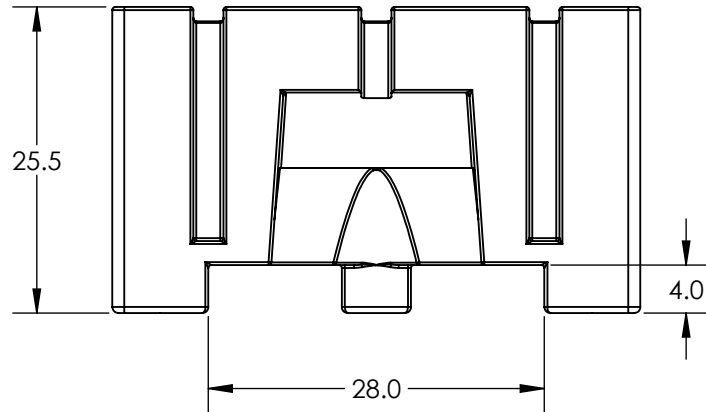


ALL DIMENSIONS ARE IN INCHES, NOMINAL, & SUBJECT TO CHANGE WITHOUT NOTICE.
 ALL DIMENSIONS ON ROTATIONAL MOLDED PARTS ARE SUBJECT TO A ± 3% TOLERANCE.

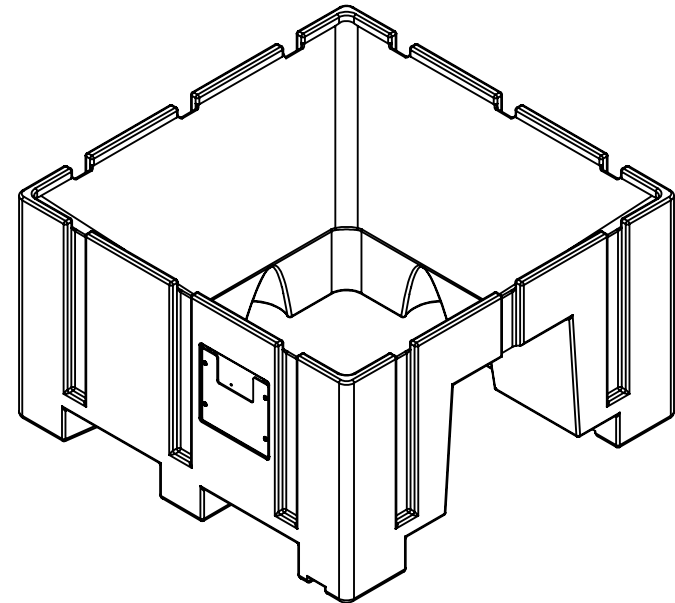
DO NOT SCALE		DRAWN BY	 BONAR PLASTICS WWW.BONARPLASTICS.COM	TITLE:	REVISION
STATUS:	Released	IGG		HPR 35CF 8090 BTM DSCRG OT	A
© SNYDER INDUSTRIES INC., 2015					SHEET 1 OF 1
<small>ALL DIMENSIONS, DESIGNS, AND INFORMATION ON THIS PRINT MUST BE CONSIDERED PROPRIETARY TO SNYDER INDUSTRIES, INC. AND MAY NOT BE USED, COPIED, OR DISTRIBUTED WITHOUT WRITTEN PERMISSION OF AN OFFICER (OR HIS AGENT) OF THE FIRM.</small>			PART NO.	ENG. ID.	
			6375300M__01	D003618	

THIS BASE IS USED ON THE FOLLOWING HOPPERS:

- 8090
- 8091
- 8092
- 8095



STANDARD BASE - 6392100M__01



BASE W/ CARD HOLDER - 6392101M__01

**ALL DIMENSIONS ARE IN INCHES, NOMINAL, & SUBJECT TO CHANGE WITHOUT NOTICE.
ALL DIMENSIONS ON ROTATIONAL MOLDED PARTS ARE SUBJECT TO A ± 3% TOLERANCE.**

DO NOT SCALE		DRAWN BY	BONAR PLASTICS WWW.BONARPLASTICS.COM		REVISION
STATUS:	Released	IGG	TITLE:		A
© SNYDER INDUSTRIES INC., 2015			PART NO.		SHEET
ALL DIMENSIONS, DESIGNS, AND INFORMATION ON THIS PRINT MUST BE CONSIDERED PROPRIETARY TO SNYDER INDUSTRIES, INC. AND MAY NOT BE USED, COPIED, OR DISTRIBUTED WITHOUT WRITTEN PERMISSION OF AN OFFICER (OR HIS AGENT) OF THE FIRM.			ENG. ID.		1 OF 1
			D003571		