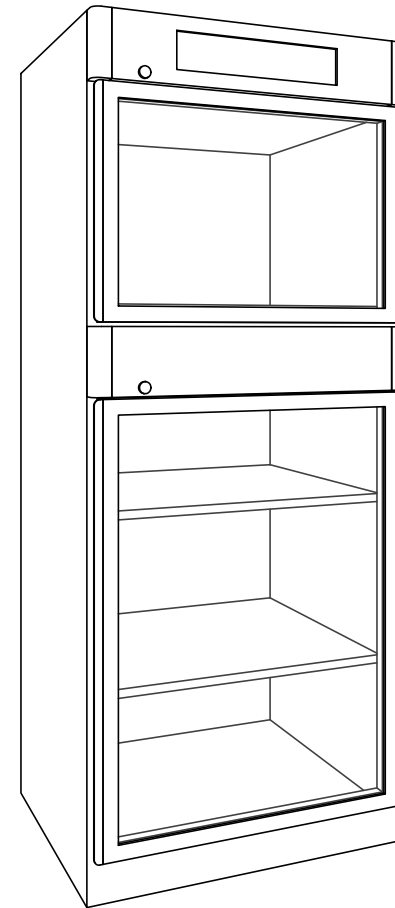
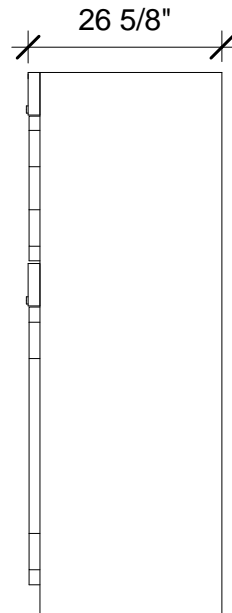
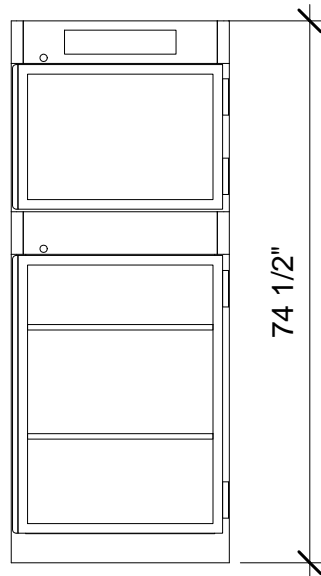


30"W x 26-5/8"D x 74-1/2"H  
 CUBIC CAPACITY 18.58 CU/FT  
 SHELVES (3)  
 120V, 1500W, 15A  
 WIFI READY  
 ENERGY SAVING MODE



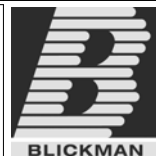
NEMA 5-15P  
 15A - 125V PLUG  
 HOSPITAL GRADE



PO#: \_\_\_\_\_ DATE: \_\_\_\_\_

APPROVAL: \_\_\_\_\_

TITLE: \_\_\_\_\_



PROPRIETARY AND CONFIDENTIAL  
 THE INFORMATION CONTAINED IN THIS  
 DRAWING IS THE SOLE PROPERTY OF  
 BLICKMAN HEALTH INDUSTRIES. ANY  
 REPRODUCTION IN PART OR AS A WHOLE  
 WITHOUT THE WRITTEN PERMISSION OF  
 BLICKMAN HEALTH INDUSTRIES IS PROHIBITED.

UNLESS OTHERWISE SPECIFIED:  
 DIMENSIONS ARE IN INCHES  
 BEND RADIUS = MTL. THK.

TOLERANCES:  
 FRACTION:  $\pm 1/32"$   
 DECIMAL:  $\pm .031"$

	NAME	DATE
DRAWN	JG	4-16-12
ENG APPR.		
MATERIAL		
FINISH		
APPRX WEIGHT = lbs		

DO NOT SCALE DRAWING

BLICKMAN HEALTH INDUSTRIES, INC.  
 LODI, N.J.

TITLE:

7924TG

BLANKET WARMER

SIZE	DWG. NO.	REV
A	14B7924243	

SCALE: 1:16

SHEET 1 OF 1

5

4

3

2

1