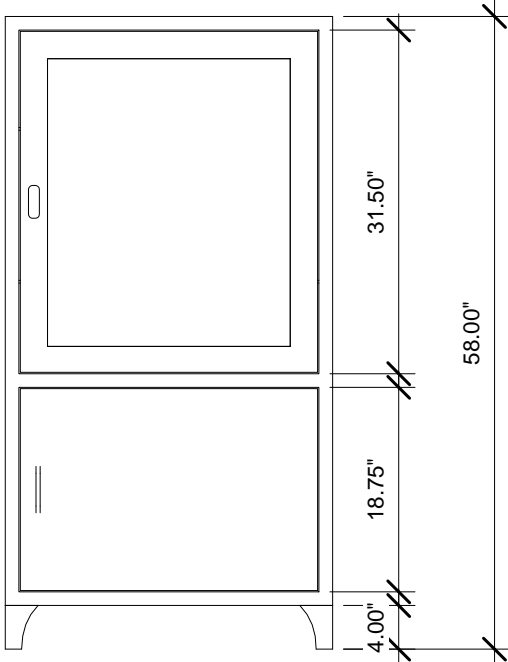
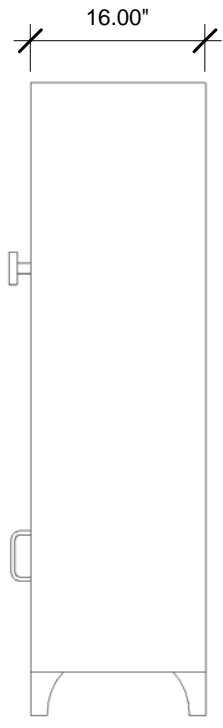


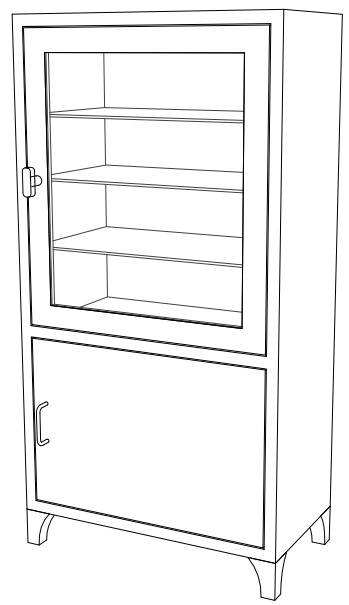
② Top
3/4" = 1'-0"



① Front
3/4" = 1'-0"



③ Right
3/4" = 1'-0"



④ 3D View 1

Model 7953SS (Kay) Cabinet is a 30" wide cabinet that divides upper and lower sections. The upper section consists of a glass door and three 14-1/2" glass shelves, adjustable every 1/2". Locking door latch secures contents.

PO#: _____ DATE: _____

APPROVAL: _____

TITLE: _____



	NAME	DATE
DRAWN	JG	2-8-12
ENG APPR.		
MATERIAL		
300 SERIES S/S		

BLICKMAN, INC
CLIFTON, NJ

TITLE: **KAY 7953SS**

FREE STANDING CABINET

PROPRIETARY AND CONFIDENTIAL
THE INFORMATION CONTAINED IN THIS DRAWING IS THE SOLE PROPERTY OF BLICKMAN HEALTH INDUSTRIES. ANY REPRODUCTION IN PART OR AS A WHOLE WITHOUT THE WRITTEN PERMISSION OF BLICKMAN HEALTH INDUSTRIES IS PROHIBITED.

UNLESS OTHERWISE SPECIFIED:
DIMENSIONS ARE IN INCHES
BEND RADIUS = MTL. THK.

TOLERANCES:
FRACTION: ± 1/32"
DECIMAL: ± .031"

FINISH

APPRX WEIGHT = lbs

DO NOT SCALE DRAWING

SIZE	DWG. NO.	REV
A	1517953000	

SCALE: 1:16

SHEET 1 OF 1