



Assembly Instructions	Instrucciones de Ensamblaje	Directives d'assemblage
Customer Service US: 1-800-645-2986	Servicio de atención al Cliente US: 1-800-645-2986	Service à la clientèle Canada: 888-645-2986

Electric Auto-Feed Handheld Drain Cleaner for 3/4"-3" ID, 5/16" x 25' Cable
Model 670462



Electric Handheld Drain Cleaner, for 3/4"-3" ID, 0-500 RPM, with 3 cables
Model 670465



Read this manual thoroughly prior to installation, operation or maintenance. Keep these instructions in a safe location for future reference. For questions, visit globalindustrial.com or contact Customer Service at 1-800-645-2986.

Table of Contents

Safety	1
General Safety.....	1
Personal Safety.....	1
Electric Safety.....	1
Tool Safety and Use.....	1
Service.....	3
Major Components Diagram of Model 670462	4
Major Components Diagram of Model 670465	4
Assembly Diagram – Model 670465	5
Assembly Diagram – Model 670462	6
Accessories and Replacements for Model 670462	6
Installing and Removing Cutters for Model 670465	7
Operating Instructions for Model 670465	7
Operating Instructions for Model 670462	7
Troubleshooting	9
Maintenance and Repair	9
Cable-Feeder Maintenance (For Model 670462 only).....	9

Safety

DANGER Indicates a hazard that will cause death or serious injury if not avoided

WARNING Indicates a hazard that could cause death or serious injury if not avoided

General Safety

Read all instructions, warnings, specifications, and ratings for the equipment. Failure to follow all instructions listed below may result in electric shock, fire, and/or serious injury.

Work Area Safety

- Keep work area well-lit and clean.
- DO NOT operate power tools in explosive atmospheres including mixtures of flammable gases, vapors, liquids, or dust. Power tools create sparks which may ignite the flammable materials.
- Keep children and bystanders away while operating a power tool. Distractions can cause you to lose control.

Personal Safety

- Use personal protective equipment (PPE) and always wear eye protection. Wear proper protective equipment such as hard hats, dust masks, non-skid safety shoes, and hearing protection for appropriate conditions to reduce chances of injuries.

DANGER: Never grasp the drain cleaning cable with a rag or cloth glove while it is rotating. Only use gloves that come with the machine or gloves that are recommended by Global Industrial.

- Do not use a power tool while you are tired or under the influence of alcohol, drugs, or medication. Being inattentive while operating a power tool may result in serious personal injury.
- Dress properly. Do not wear any loose clothing or jewelry. Keep gloves, clothing, and hair away from moving parts. Loose clothes, jewelry, and hair can be caught in moving parts.
- Prevent accidental starting. Ensure the motor power switch is OFF before connecting the power tool to a power source. Carrying a power tool with your hand on the switch or connecting a power tool to a power source while the switch is ON invites accidents.
- Remove adjusting wrenches, keys, or tools before turning the power tool ON. A wrench, key, or tool left attached to a rotating part of the power tool can result

in personal injury.

- Do not overreach. Keep proper balance and footing at all times. Using proper balance and footing allows better control of the power tool during unexpected situations.

Electric Safety

- Always use outlets that match the power tool plug. Never remove the grounding plug or make any other modifications. Ensure the outlet is properly installed and grounded. Do not use adapter plugs. Using unmodified plugs and outlets helps ensure grounding and reduces chances of electrical shock.
- Ensure the Ground Fault Circuit Interrupter (GFCI) provided with the power cord is functional before using the power tool. Always use a GFCI protected supply when using the power tool. GFCI reduces the risk of an electric shock.
- DO NOT contact any earthed or grounded surfaces such as refrigerators, ranges, pipes, and radiators.
- DO NOT expose a power tool to rain or wet conditions. Water in a power tool increases the risk of an electric shock.
- Always pull the plug – not the power cord – when disconnecting from the outlet. DO NOT abuse the power cord. Never use the power cord for carrying or pulling the power tool. Keep the power cord away from moving parts, sharp edges, heat, and oil. Replace damaged power cords as damages increases the risk of electric shock.
- Always use an extension cord for outdoor conditions and a GFCI when using the power tool outside. The GFCI on the power cord will not prevent electric shock from the extension cord. Plugging in extension cords rated for outdoor use into a GFCI outlet can reduce the risk of an electric shock.
- DO NOT touch the power tool or the plug when hands are wet. Wet hands can increase the risk of electric shock.

Tool Safety and Use

- DO NOT reach into the rotating drum unless the power tool is OFF and disconnected from a power source. Hands may be caught in the moving parts which can cause serious injury.
- DO NOT leave the cleaning cable exposed outside of the drum while the machine is plugged in or the motor power switch is ON. The cleaning cable can whip and cause

- serious injury.
- Always check for damages to the cleaning cable in the drum by pulling the cable out while the power tool is OFF and disconnected from a power source before use. Perform frequent maintenance and replace damaged, kinked, or broken cables with identical replacements.
 - **Only use gloves recommended by Global Industrial for grasping the cleaning cable.** Loose fitting gloves such as cloth, rubber, latex, or coated gloves can get caught on the cleaning cable and cause serious injury.
 - **Keep glove-covered hand on the cleaning cable while the power tool is running.** Keeping gloved hands on the cable allows for better control and helps prevent the cable from breaking, twisting, or kinking which may lead to serious personal injury.
 - Use goggles, face shields, respirators, protective clothing, and latex or rubber gloves under the gloves recommended by Global Industrial to prevent the spread of toxic or infectious substances coming from the drain line. Drains may contain harmful chemicals, bacteria, and other toxic or infectious substances that may cause burns and personal injury.
 - DO NOT use the power tool without the **belt guard** or **cable guide**. The **belt guard** helps reduce the risk of fingers getting caught between the belt and the pulley. The **cable guide** helps reduce the risk of hand injury.
 - **This power tool is designed for a one-person operation.** The operator must be able to turn the power tool OFF as soon as the cutter stops rotating to prevent the cleaning cable from breaking, twisting, and kinking.
 - **Only use the power tool for the recommended drain or pipe sizes.** Using a drain cleaner inappropriate for the job can cause the cleaning cable to break, twist, or kink, and can cause personal injury.
 - **DO NOT use the power tool at a distance greater than two feet from the opening.** Distances greater than two feet can cause the cleaning cable to break, twist, or kink.
 - **DO NOT use the power tool while in reverse (REV) unless specified in this manual.** Using the power tool while in reverse can cause damage to the cleaning cable. The power tool should only be in reverse (REV) to back the cleaning cable and cutter out of blockages or obstructions.
 - Always practice good hygiene before, during, and after the job. Avoid direct contact with your skin and eyes. DO NOT eat or smoke while handling or using the power tool. Wash hands and other body parts exposed to drain contents with warm soapy water. Keeping clean and protected reduces the risk of health hazards.
 - DO NOT use this power tool if the operator or power tool is standing in water. Using the power tool while on water increases the risk of electric shock.
 - **Always check for risks of contact with utilities such as natural gas or electricity before using the power tool.** Look for utilities, damages to the drain, cross bores, and other objects the cutter may contact. Contact with these hazards can cause gas leaks, fires, explosions, electric shocks, or other serious injuries.
 - **DO NOT force the power tool. Let the cutter do the work.** Using the appropriate tool for the job is safer and effective. Cutters that do not turn while the cleaning cable is turning can be due to an obstruction. Further use in this situation can cause twisting or damage to the cleaning cable and may result in serious injury.
 - **DO NOT use the power tool if the power switch does not turn it ON or OFF.** A Power tool which cannot be controlled with a switch is dangerous and must be repaired.
 - Always disconnect the power tool from any power source and/or remove batteries, if applicable, before changing accessories or storing the power tool. Disconnecting the power prevents accidental starting of the power tool.
 - **Keep power tools and accessories out of reach of children and untrained persons.** Power tools are dangerous when used without proper training and understanding of the power tool and these instructions.
 - Maintain accessories and tools with care. Ensure there are no damages, misalignment, binding of moving parts, or any other condition that may affect the power tool's use. Poorly maintained tools can cause accidents.
 - **Keep cutting accessories and tools sharp and clean.** Sharp and clean tools are easier to control, more effective, and less likely to bind.
 - **DO NOT use accessories that are not provided or recommended by Global**

Industrial. Accessories that are not suitable for the power tool increases the risk of injury.

- Always use the power tool, accessories, and tools while following these instructions and in consideration of the job and working conditions. Using a power tool in situations different from those intended increases the risk of injury.
- **DO NOT use the power tool when handles are dirty, slippery, or covered in oil.** Always keep the handles clean before using the power tool to ensure safe handling and control during unexpected situations.

Service

- Always have the power tool serviced by a qualified repair person using only identical replacement parts. Professional service reduces the risk of injury.

Major Components Diagram of Model 670462

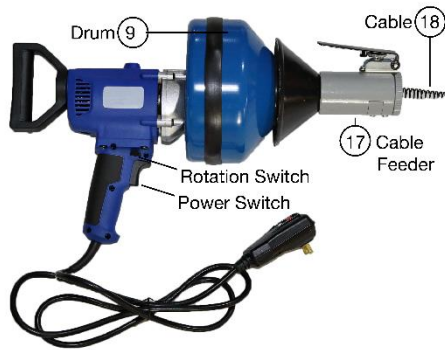


Figure 1. Components Diagram of Model 670462

Major Components Diagram of Model 670465

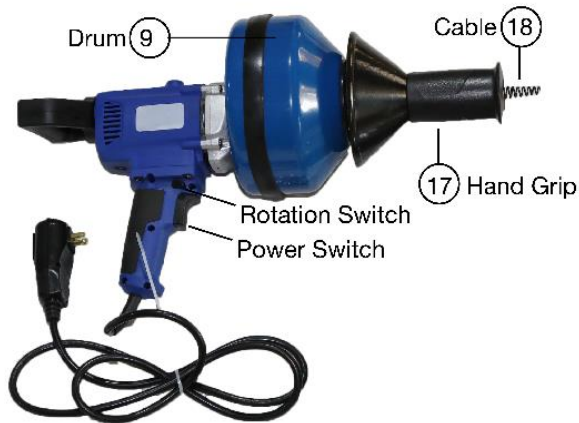


Figure 2. Components Diagram of Model 670465

Table 1. Accessories and Application Examples for Model 670462


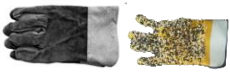








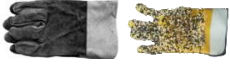
Cutter	Photo	Application Examples
Cable, 5/16 In x 25 Ft, Inner Core with Bulb Auger		3/4" to 1 1/2"
Heavy-duty leather gloves and rubber gloves		Protect user while handling the machine and the cleaning cable

Table 2. Accessories and Application Examples for Model 670465

Cutter	Photo	Application Examples
Cable, 3/8 In x 35 Ft, with 5/8" connector		1 1/4" to 2 1/2" pipes
Cable, 5/16 In x 25 Ft, Inner Core with Bulb Auger		3/4" to 1 1/2"
Cable, 5/16 In x 50 Ft, with Bulb Auger		3/4" to 1 1/2"
Bulb Auger, 7/8" Dia.		Starting tool, Cutting and scraping
Drop Head Auger, 1 3/8" Dia.		Starting tool, Loose objects.
C Cutter, 1 7/8" Dia.		Finishing tool, Grease stoppages.
Spade Cutter, 1" Dia.		Finishing tool, Scraping inside edges
Pin Key		Changing cutters
Heavy-duty leather gloves and PVC gloves		Protects user while handling the machine

Assembly Diagram – Model 670465

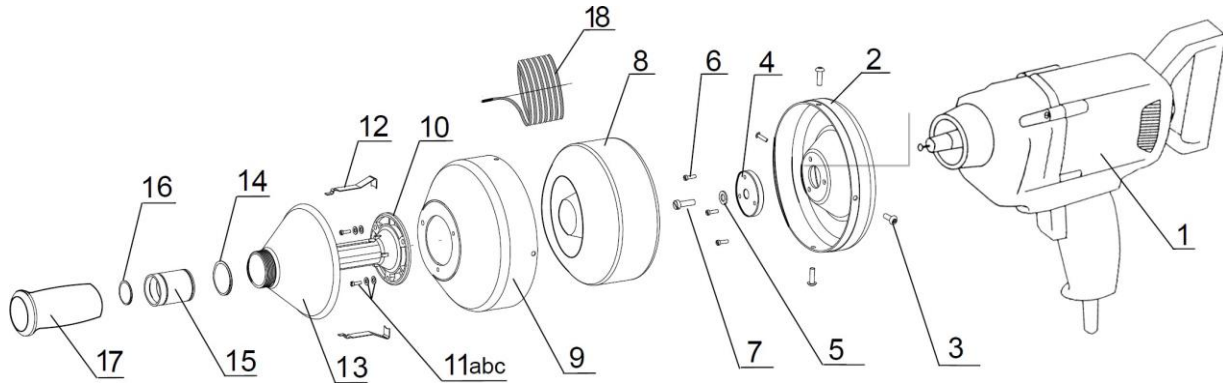


Figure 3. Assembly of Model 670465

No.	Description	Qty
1	Hand Drill with GFCI	1
2	Back Drum Case	1
3	Bolt M5 x 6	4
4	Rear Hub	1
5	Flat Washer Ø6	1
6	Bolt M6 x 12	3
7	Bolt LH M6 x 12	1
8	Plastic Inner Drum Case	1
9	Front Drum Case	1
10	Main Shaft	1
11a	Bolt M6 x12	3
11b	Spring Washer Ø6	3
11c	Flat Washer Ø6	3
12	Cramp Spring	2
13	Front Plastic Hood	1
14	Spiral Ring Ø40	1
15	Sleeve	1
16	Spiral Ring Ø34	1
17	Hand Grip	1
18	Cable	1

Assembly Diagram – Model 670462

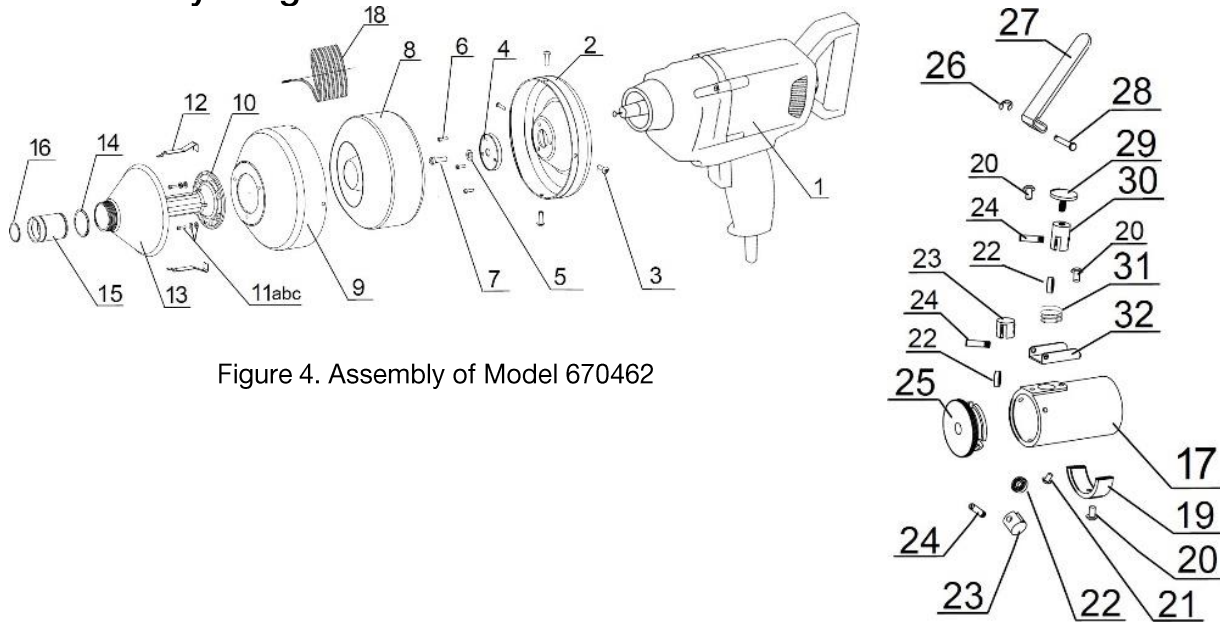


Figure 4. Assembly of Model 670462

No.	Description	Qty
1	Hand Drill with GFCI	1
2	Back Drum Case	1
3	Bolt M5 x 6	4
4	Rear Hub	1
5	Flat Washer Ø6	1
6	Bolt M6 x 12	3
7	Bolt LH M6 x 12	1
8	Plastic Inner Drum Case	1
9	Front Drum Case	1
10	Main Shaft	1
11a	Bolt M6 x12	3
11b	Spring Washer Ø6	3
11c	Flat Washer Ø6	3
12	Cramp Spring	2
13	Front Plastic Hood	1
14	Spiral Ring Ø40	1
15	Sleeve	1

16	Spiral Ring Ø34	1
17	Cable Feeder Housing	1
18	Cable	1
19	Housing Gate	1
20	Holding Screw M6 x 10	3
21	Positioning Screw	1
22	Roller Bearing (606Z)	3
23	Stationary Roller Holder	2
24	Switch Pin Screw M6 x 25	3
25	Cable Feeder Actuator	1
26	Clip Ring	1
27	Lever	1
28	Pivot Pin Ø5 x 35	1
29	Adjusting Knob	1
30	Sliding Roller Holder	1
31	Spring	1
32	Handle Base	1

Accessories and Replacements for Model 670462

Model	Description
670442	Global Industrial Wire Core Cable with Bulb Auger, For Use With 670462, 5/16" x 25' Cable

Installing and Removing Cutters for Model 670465

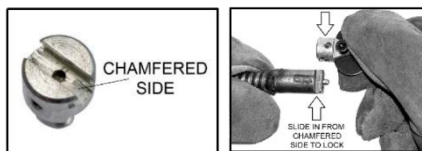


Figure 5. Installing Cutters

Slide the chamfered side of the female end of the cutter onto the male end of the cleaning cable until a click is heard.

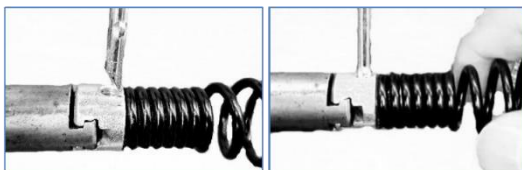


Figure 6. Removing Cutters

Insert the pin key into the hole of the cutter with the chamfered end of the key facing the cleaning cable. Hold the cleaning cable with one hand and slide the cutter off with the other hand.

Operating Instructions for Model 670465

1. Connect the machine to an outlet that matches the plug.
2. Test the GFCI near the plug on the power cord by pressing the test button. A light should turn on to indicate the GFCI works. Then press the reset button. If the light doesn't turn on, the GFCI needs to be repaired. DO NOT use the machine until the GFCI has been repaired.
3. Slide the cutter onto the male end of the cleaning cable
4. Push the **hand grip (17)** away from the drum to release the **slide-action chuck**.
5. Pull the cleaning cable out of the drum while the machine is OFF. Slide the cleaning cable into the drain as far as it will go. At least one foot (0.3 m) of the cable must be in the drain.
6. Pull the **hand grip (17)** back towards the drum to activate the **slide-action chuck**.
7. Set the **rotation switch** to FORWARD. Press the power switch to turn on the machine and slowly feed the cable into the drain. Moving

the cable back and forth slowly is effective and helps reduce stress on the cable.

8. Ensure the cutter doesn't get caught in the stoppage as you work through it. This can cause the cleaning cable to kink and break. When you feel the cable start twisting in your hands, stop the machine and pull some of the cable back to free the cutter from the obstruction. Then, repeat the slow forward motion. Remember, no cutting takes place when the blade stops turning. If the cable is stuck, put the **rotation switch** in the to the REVERSE position only for a few seconds. Running in the REVERSE position for too long can damage the motor. The REVERSE position is NOT meant for retracting the cable into the drum. Return the **rotation switch** to the FORWARD position.
9. To retract the cleaning cable into the drum, leave the **rotation switch** in the FORWARD position. Pull the cable out of the drain while holding the **power switch** and push the cable into the drum.
10. When the cutter is near the drain opening, turn the **power switch** OFF and push the remaining cable into the drum manually. Rotating an exposed cleaning cable outside of a drain can cause whipping and serious injury.

Operating Instructions for Model 670462

1. Connect the machine to an outlet that matches the plug.
2. Test the GFCI near the plug on the power cord by pressing the test button. A light should turn on to indicate the GFCI works. Then press the reset button. If the light doesn't turn on, the GFCI needs to be repaired. DO NOT use the machine until the GFCI has been repaired.
3. Pull the cleaning cable out of the drum while the machine is OFF.

Slide the cleaning cable into the drain as far as it will go. At least one foot (0.3 m) of the cable must be in the drain.

4. Set the **rotation switch** to FORWARD. Press the power switch while pushing down on the **Cable Feeder Lever** to turn on the machine and slowly feed the cable into the drain. Moving the cable back and forth slowly is effective and helps reduce stress on the cable. DO NOT allow more than 12" of cable exposed.
5. Ensure the cutter doesn't get caught in the stoppage as you work through it. This can cause the cleaning cable to kink and break. When you feel the cable start twisting in your hands, stop the machine and pull some of the cable back to free the cutter from the obstruction. Then, repeat the slow forward motion. Remember, no cutting takes place when the blade stops turning. If the cable is stuck, put the **rotation switch** in the to the REVERSE position only for a few seconds. Running in the REVERSE position for too long can damage the motor. The REVERSE position is NOT meant for retracting the cable into the drum. Return the **rotation switch** to the FORWARD position.
6. To retract the cleaning cable into the drum, leave the **rotation switch** in the FORWARD position. Turn the **Cable Feeder Actuator** to R for retracting and hold the **power switch**.
7. When the cutter is near the drain opening, turn the **power switch** OFF and push the remaining cable into the drum manually. Rotating an exposed cleaning cable outside of a drain can cause whipping and serious injury.

Troubleshooting

Problem	Possible Causes	Solution
Cable kinks or breaks	Operator forced the cable	Do not force the cable. Let the cutter do the work
	Too much slack between machine and drain	Allow no more than 1 feet between machine and drain opening
	Cable used in wrong size drain line	A cable that is too large or too small in diameter for a line is more likely to kink
Cable tangles in drum	Operator forced the cable	Do not force the cable. Let the cutter do the work
	Machine running in Reverse direction	Do not run the machine in the Reverse position to retract the cable from the drain or to put the cable into the drum. The Reverse position is only meant to be used for a few seconds to get a cable unstuck. To retract a cable, leave the Rotation Switch on the Forward position and push the cable into the drum.
Ground fault circuit interrupter trips and will not reset.	Damaged power cord or extension cord	Replace cords
	Short circuit in motor	Take motor to authorized repair center
	Faulty ground fault circuit interrupter	Replace ground fault circuit interrupter

Failure to feed with Cable Feeder (Only for Model 670462)	Cable tangled in drum	Pull out the cable and feed in.
	Cable Feeder Lever pressed too hard	Push down on the Cable Feeder Lever gently
	Cable Feeder roller frozen	Clean and wipe Cable Feeder rollers with light machine oil. Replace worn rollers.
	Worn cable	When cable coils wear flat, cable should be replaced

Maintenance and Repair

Wipe cleaning cables with light machine oil.

Cable-Feeder Maintenance (For Model 670462 only)

Clean the **cable-feeder** with fresh water then wipe with light machine oil. If dirt is preventing the feeder from rotating, disassembly may be required.

1. Remove the Pivot Pin on the Cable Feeder Lever and take off the lever.
2. Remove 2 holding screws above the Cable Feeder Housing in the Lever Holder and 2 Holding Screws below the Cable Feeder Housing. Then take off the Cable Feeder Activator and the Housing Gate.
3. Remove the Switch Pin Screw on the Sliding Roller Holder and pull off the roller set from above the Cable Feeder Housing.
4. Remove the Switch Pin Screws on the Stationery Roller Holders and pull off the roller sets from the opening below the Cable Feeder Housing.
5. Clean all parts in the Cable Feeder.
6. Lubricate all parts with proper light machine oil.
7. Follow steps 1-4 in reverse order to re-assemble the Cable Feeder.