

Description:

The STP-320 is an Insulated Category B Shipping System designed for the shipment of temperature controlled shipments using phase change materials such as the SAF-T-TEMP™ line as well as Dry ice as an energy source.

STP-320 Category B, Insulated Shipping System

Quantity - 4/Case

System Components:

- **Outer Box** – OD 15 3/8 x 13 5/8 x 12 3/4”
- **Insulated Chest** – ID 11 5/8 x 10 x 8”
- **STP-111** Inner Box – ID 6 1/2 x 6 1/2 x 8”
- **STP-710** Disposable 2-part Secondary Pressure Vessel, Medium (2)
- **STP-152** 250 mL Absorbent Strip (2)
- **STP-610** 12 x 12” Saf-T-Rap® Bubble Wrap (2)
- **STP-804** Dry ice Marking
- **STP-803** Class 9 Hazard Label
- **STP-818** UN 3373 Marking



Maximum Capacity - Two 500 mL blood bags or thirty-two 10 mL vials.

Ideal for long distance frozen shipments.

Designed for use with Saf-T-Temp™ products or Dry ice for thermal control.

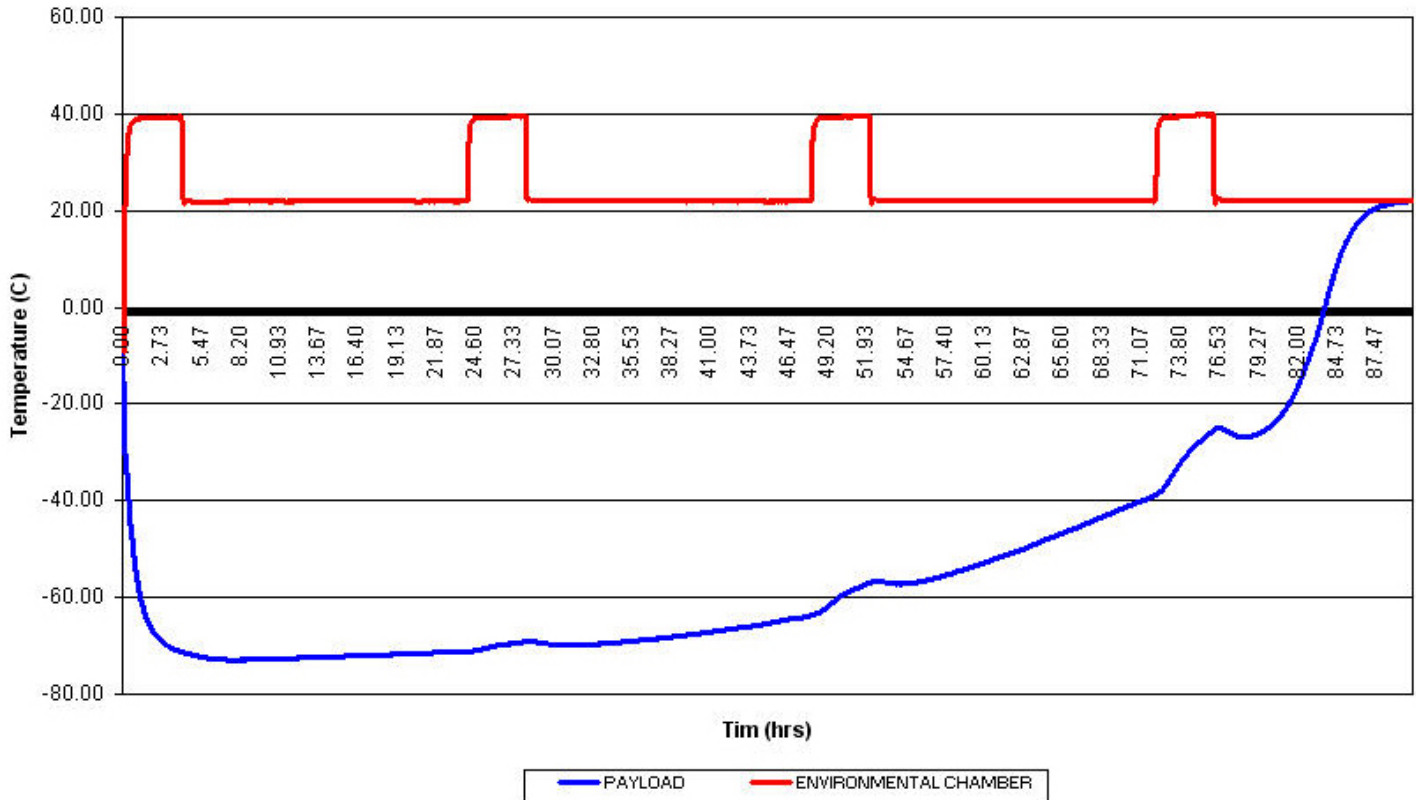
Refurbishments and Optional Components

STP-321 Outer Box - 10/Case

STP-111 Inner Box - 12/Case

Specifications subject to change without notice

Hot Stress Performance
STP-300/310/320 Series Shipping System
with 7.9 kg Dry ice



Testing Synopsis

Product performance testing under worst-case conditions was done on the STP-320 Category B Insulated Shipping System. Seven and nine tenths kilograms (7.9 kg) of Dry ice was used as refrigerant.

The minimum payload of five (5) 10 mL vials filled with a non-freezing liquid mixture were placed in the STP-710 Disposable Secondary Pressure System (included). The samples were preconditioned in a conventional freezer set to maximum between -25 to -30 °C for a minimum of 24 hours prior to testing.

The average total test time where the minimum payload samples were at or below 0 °C was 83.9 hours.

The thermal profiles displayed in this data sheet are applicable to the STP-300 Series shippers, which include the STP-300; STP-310; and STP-320.