

## Mark 11 Disinfectant Cleaner #B2310688



Red for all light to medium soiled surfaces, washroom fixtures, countertops, toilet bowls, stainless steel, drinking fountains, mirrors, painted walls, phones, ashtrays, garbage cans, etc. Mark 11 is a pH neutral cleaner-deodorizer-disinfectant-fungicide. EPA Registered.

1. Fill Mark 11 Bottle with 32 oz. of water.



2. Add contents of one pack of Mark 11 Disinfectant Cleaner #B2310688 to the bottle.

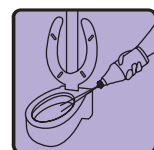


3. Lightly spray surfaces. Wipe dry.



**Tip:** Empty and rinse bottle before refilling.

## \* GS Restroom & Bowl Cleaner Concentrate #B2310701



Purple for all toilet bowls, urinals, shower walls, tubs and sinks, etc.



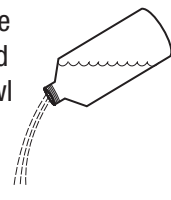
1. Fill bottle to with 30 oz. of cold water.



2. Add contents of one pack of GS Restroom & Bowl Cleaner Concentrate #B2310701 to the bottle.



3. Squeeze bottle to squirt liquid into toilet bowl or urinal, and clean.



**Tip:** Empty and rinse bottle before refilling.

\* This product meets Green Seal™ Standard GS-37 based on effective performance, concentrated volume, minimized/recycled packaging and protective limits on: VOCs and human & environmental toxicity. GreenSeal.org.

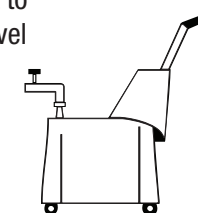
## \* GS Neutral Cleaner Concentrate #B2310706



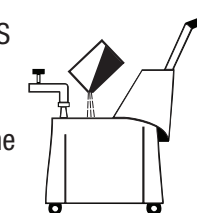
Yellow for all lightly soiled hard floors, including marble, terrazzo, asphalt tile, ceramic tile, granite, synthetic floors, poured surfaces, concrete, linoleum, etc.



1. Fill bucket to proper level with cold water.



2. Pour in contents of one pack of GS Neutral Cleaner Concentrate #B2310706 to the bucket.



3. Damp mop in normal manner.



**Tip:** Change solution according to your supervisor's directions.

## \* GS Extra-Strength Cleaner Concentrate #B2310694



Green for all heavily soiled or oily surfaces, washable surfaces, countertops, walls, vinyl furniture, glass, windows, mirrors, stainless steel, etc.



1. Fill green spray bottle with 31 oz. of cold water.



2. Add contents of one pack of GS Extra-Strength Cleaner Concentrate #B2310694 to the bottle.



3. Lightly spray surfaces. Wipe dry.



**Tip:** Empty and rinse bottle before refilling.

## \* GS Window Cleaner Concentrate #B2310696



Blue for all glass, windows, mirrors, stainless steel, etc.



1. Fill blue spray bottle with 30 oz. of cold water.



2. Add contents of one pack of GS Window Cleaner Concentrate #B2310696 to the bottle.



3. Lightly spray surfaces. Wipe dry.



**Tip:** Empty and rinse bottle before refilling.

**STEARNS** ONE PACKS  
Dispenser-Free Control Systems™  
**GLOBAL INDUSTRIAL**  
2505 Mill Center Parkway, Buford, GA 30518  
Telephone: (800) 645-1232 • www.globalindustrial.com