



GLOBAL INDUSTRIAL™

We can supply that.®

User's manual

Manual del usuario

Manuel de l'utilisateur

Customer Service
US: 1-800-645-2986

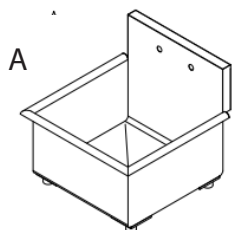
Servicio de atención al Cliente
US: 1-800-645-2986

Service à la clientèle
Canada: 888-645-2986

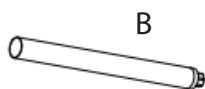
Global Industrial™ Stainless Steel Utility Sink

Model: 252978

Parts List:



(1) Sink Basin



(4) Basin Standing
Legs



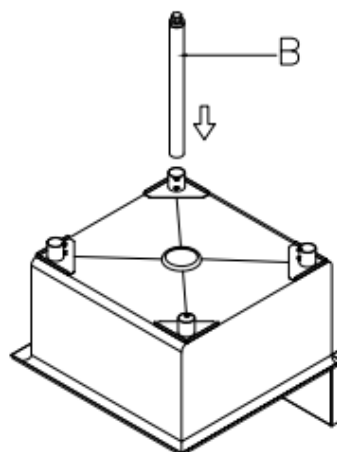
(8) Hex Fasteners



(1) Allen Wrench

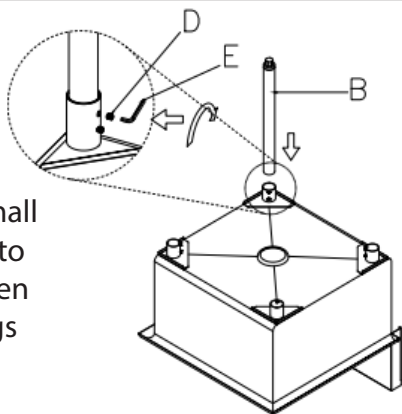
1.

Begin with basin upside-down. Remove Hex Fasteners if still in Basin. Insert the flat side of one of the legs into its holes at the bottom of the basin. Ensure feet are pointing up.



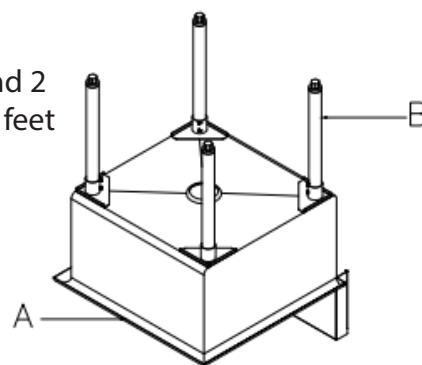
2.

Using the Allen Wrench, insert Hex Fasteners into the small holes perpendicular to the Legs. Hand-tighten firmly and ensure legs do not wobble.



3.

Repeat steps 1 and 2 for the remaining 3 feet of the basin.



WARNING:

Ensure all Hex Fasteners are tightened completely before standing basin upright.