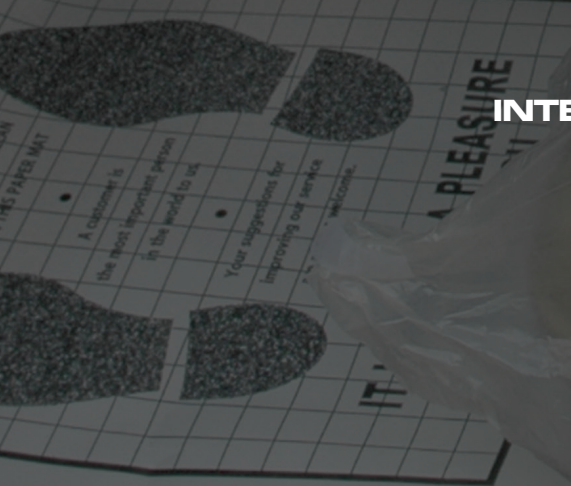




J O H N D O W

Quality, Innovation, Solutions.

F U L L L I N E  
I N T E R I O R P R O T E C T I O N C A T A L O G





INTERIOR PROTECTION



# AUTO PROTECTION Seat Covers

These inexpensive covers protect bucket and bench seats from dirt, dust, grease and liquids. Perfect for auto body shops to keep dirt and paint off the interior.



Space-savings box with individual folded covers.

### Features Include:

- Covers measure 31-1/2" W x 52"L - large enough to protect bucket and bench seats
- A 13" pocket slips over the top of the seat for easy installation
- Specially designed to stay in place when the technician enters and exits the car
- Strong construction won't rip or tear
- Seat covers come on perforated rolls for easy dispensing
- Choose from three different thickness options

### SPECIFICATIONS:

| MODEL NO.   | SC-2     | ESC-2-H  | ESCB-2      | SC-5H    |
|-------------|----------|----------|-------------|----------|
| DESCRIPTION | PREMIUM  | ECONOMY  | ECONOMY-BOX | VALUE    |
| PACKAGE/QTY | ROLL/200 | ROLL/200 | BOX/200     | ROLL/500 |
| THICKNESS   | 1.0 MIL  | .8 MIL   | .8 MIL      | .6 MIL   |
| WEIGHT      | 20 LBS.  | 16 LBS.  | 15 LBS.     | 18 LBS.  |

# Floor Mats

These disposable mats are available in three types - paper, plastic and poly-coated paper. Each type is designed to provide a level of protection based on the service environment and application. Mats are printed with a "Thank You" message to demonstrate the shop's concern for the care of the vehicle.



### Plastic

#### FM-3-H

- Heavy-duty plastic
- General purpose mat keeps dirt off carpet and prevents leakage
- Measures 18" x 19"
- Roll of 500
- Weight: 15 lbs.



### Paper

#### PFM-500

- Durable paper
- Designed for dry environment applications
- Measures 16" x 22"
- Box of 500
- Weight: 25 lbs.



### Poly-Backed Paper "The Blocker"

#### PFM-500P

- Heavy-duty paper with poly coated back
- Effective barrier against dirt, grease and liquids
- Poly coating adds strength and prevents leakage and slipping
- Measures 16" x 22"
- Box of 500
- Weight: 25 lbs.



# AUTO PROTECTION Accessories



## Steering Wheel Covers

### SPECIFICATIONS:

| MODEL NO.   | SWC-1    | SWC-5    |
|-------------|----------|----------|
| PACKAGE/QTY | Box/100  | Box/500  |
| SIZE        | 5" x 20" | 5" x 20" |
| WEIGHT      | 2 LBS.   | 7 LBS.   |



## Gear Shift Covers

### SPECIFICATIONS:

| MODEL NO.   | GSC-1    | GSC-5   |
|-------------|----------|---------|
| PACKAGE/QTY | Box/100  | Box/500 |
| SIZE        | 7" x 6"  | 7" x 6" |
| WEIGHT      | 0.5 LBS. | 2 LBS.  |



## Tire Storage Bags

- Clear polyethylene bags are designed to keep spare or seasonal tires from soiling trunks, back seats, clothing and hands

### SPECIFICATIONS:

| MODEL NO.   | TB-6     | TB-6SUV  |
|-------------|----------|----------|
| DESCRIPTION | STANDARD | SUV      |
| PACKAGE/QTY | ROLL/100 | ROLL/100 |
| WEIGHT      | 1.2 LBS. | 1.4 LBS. |



## Parts Return Bags PB-12

When dirty or greasy parts need to be returned to the customer after service work, these bags provide excellent protection. Made of clear polyethylene they are tough enough to hold worn-out parts and keep them off the carpet or upholstery.

- 1.0 mil thickness
- Roll of 500
- Measures 12" x 22"
- Weight: 13 lbs.

## DISPENSER RACKS & ACCESSORIES

A key to using the interior protectors is to have them readily available in the service department. This specially designed rack is a convenient and inexpensive way to store and dispense seat covers, floor mats, steering wheel covers, tire bags and parts return bags.



### Floor Dispenser Rack - DS-4

This 4-bar rack holds standard rolls of seat covers, plastic floor mats, parts return bags and tire storage bags.

- Steel construction
- Easy to assemble (no bolts required)
- Measures 40"W x 42"H
- Weight: 16 lbs.

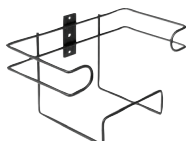


### Paper Floor Mat Rack - FMR-1722

- Holds a full case of paper floor mats up to 16" x 22"

- Heavy-duty steel construction
- Easily attaches to the DS-4 floor dispenser rack

- Wall mount is also an option
- Weight: 11 lbs.



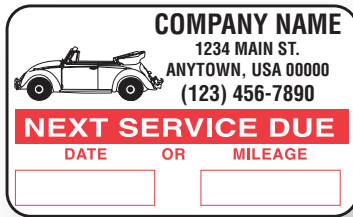
### Steering Wheel Cover Rack - SWCR-1

- Steel wire construction
- Attaches to the DS-4 floor dispenser rack

- Holds one box of 500 steering wheel covers
- Weight: 1 lb.



# SERVICE MANAGER SUPPLIES



## Service reminder stickers

Service reminder stickers are an important tool to retain customers and keep them coming back. These stickers are custom printed with company name and address. An optional logo can be added. Stickers cling to glass or any smooth surface and can be easily removed.

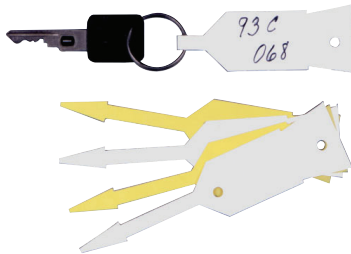
### SC-1000 STANDARD

### SCL-1000 LOGO

- Easy-to-read 1-1/2" x 2-1/2"
- 1000 die-cut stickers per roll
- Imprint is black
- Maximum of four lines
- No set-up fees

### SPECIFICATIONS:

|             | SC-1000  | SCL-1000 |
|-------------|----------|----------|
| DESCRIPTION | STANDARD | LOGO     |
| WEIGHT      | 1 LB.    | 1 LB.    |



## Key Tags

- Arrow shape design securely locks tag to the key ring
- Durable and easy to write on
- Comes in packages of 1000
- Available in yellow or white

### SPECIFICATIONS: 086W 086Y

| DESCRIPTION | VINYL | VINYL  |
|-------------|-------|--------|
| COLOR       | WHITE | YELLOW |
| WEIGHT      | 1 LB. | 1 LB.  |



## Work Order Holders

Keep work order, keys and other information all together with these see through work order holders. Large clear window makes contents easy to read without removing it from the holder. Made of heavy-duty vinyl these holders include a strap for convenient hanging on the car or service board. Available in three different sizes and styles.

### SPECIFICATIONS: WRK-220 WRK-230 WRK-240

| SIZE        | 9-1/2" x 12-1/2" | 11" x 14" | 13" x 12" |
|-------------|------------------|-----------|-----------|
| OPENING     | TOP              | TOP       | SIDE      |
| PACKAGE/QTY | Box/25           | Box/25    | Box/25    |
| WEIGHT      | 3.8 LBS.         | 3.8 LBS.  | 3.8 LBS.  |

151 Snyder Avenue | Barberton, OH 44203  
Toll Free: 800.433.0708 | Phone: 330.753.6895 | Fax: 330.753.6419